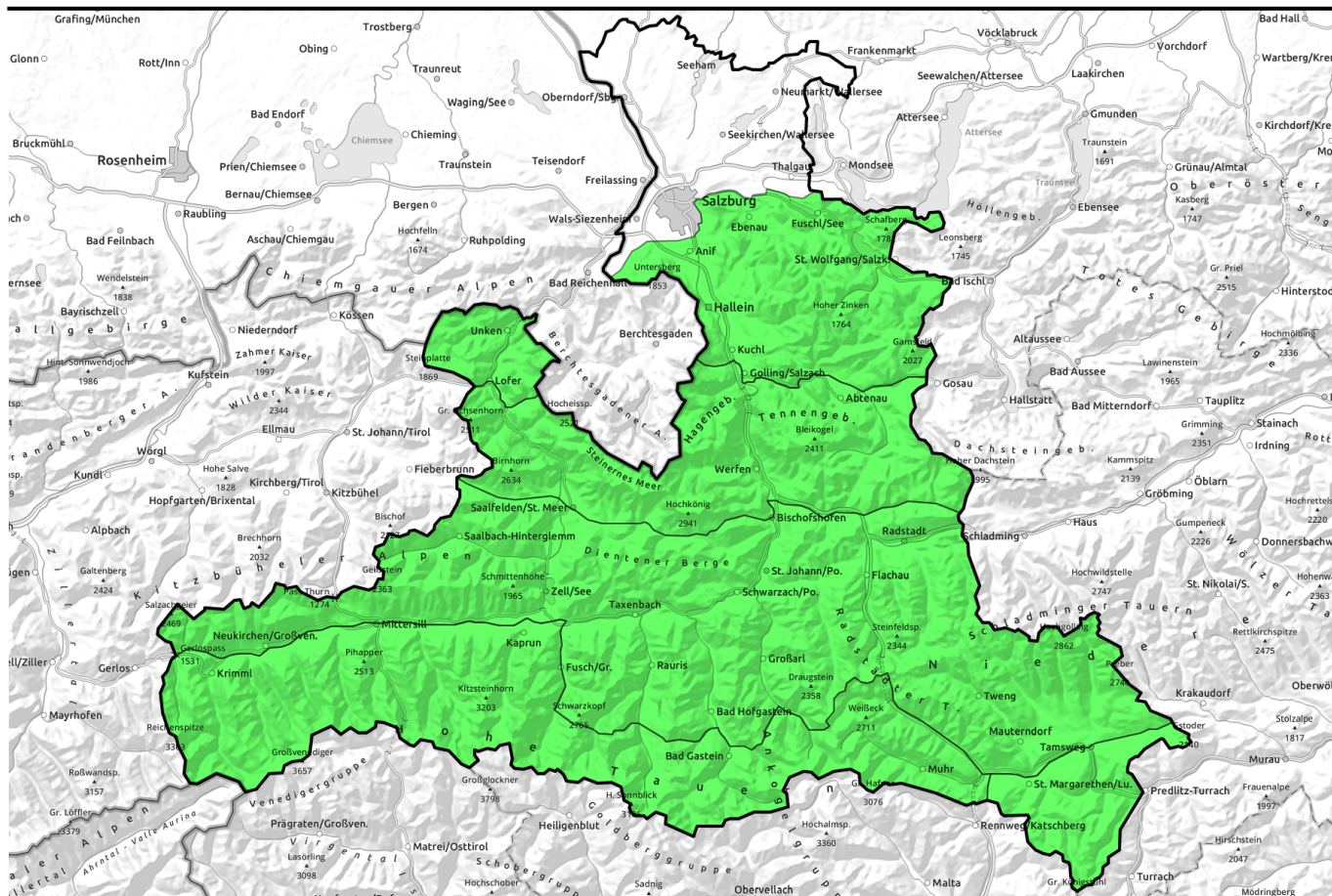


26.03.2022, morning



Springtime conditions, daytime danger cycle rising to MODERATE



Nockberge, Untersbergstock, Osterhorngruppe, Gamsfeldgruppe



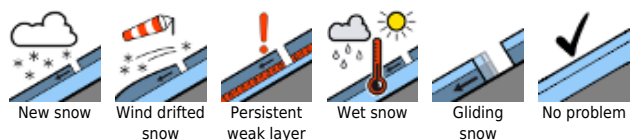
Chiemgauer Alpen, Heutal, Reiteralpe, Kitzbüheler Alpen, Glemmtal, Oberpinzgauer Grasberge, Dientner Grasberge, Pongauer Grasberge, Niedere Tauern Nord, Niedere Tauern Alpenhauptkamm, Goldberggruppe Nord, Niedere Tauern Süd



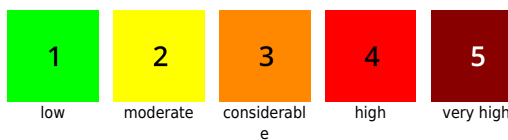
Tennengebirge, Gosaukamm, Steinernes Meer, Hochkönig, Hagengebirge, Göllstock, Loferer und Leoganger Steinberge, Großvenedigergruppe Nord, Großvenedigergruppe Alpenhauptkamm, Glocknergruppe Nord, Glocknergruppe Alpenhauptkamm, Goldberggruppe Alpenhauptkamm, Ankogelgruppe, Muhr



Avalanche problems



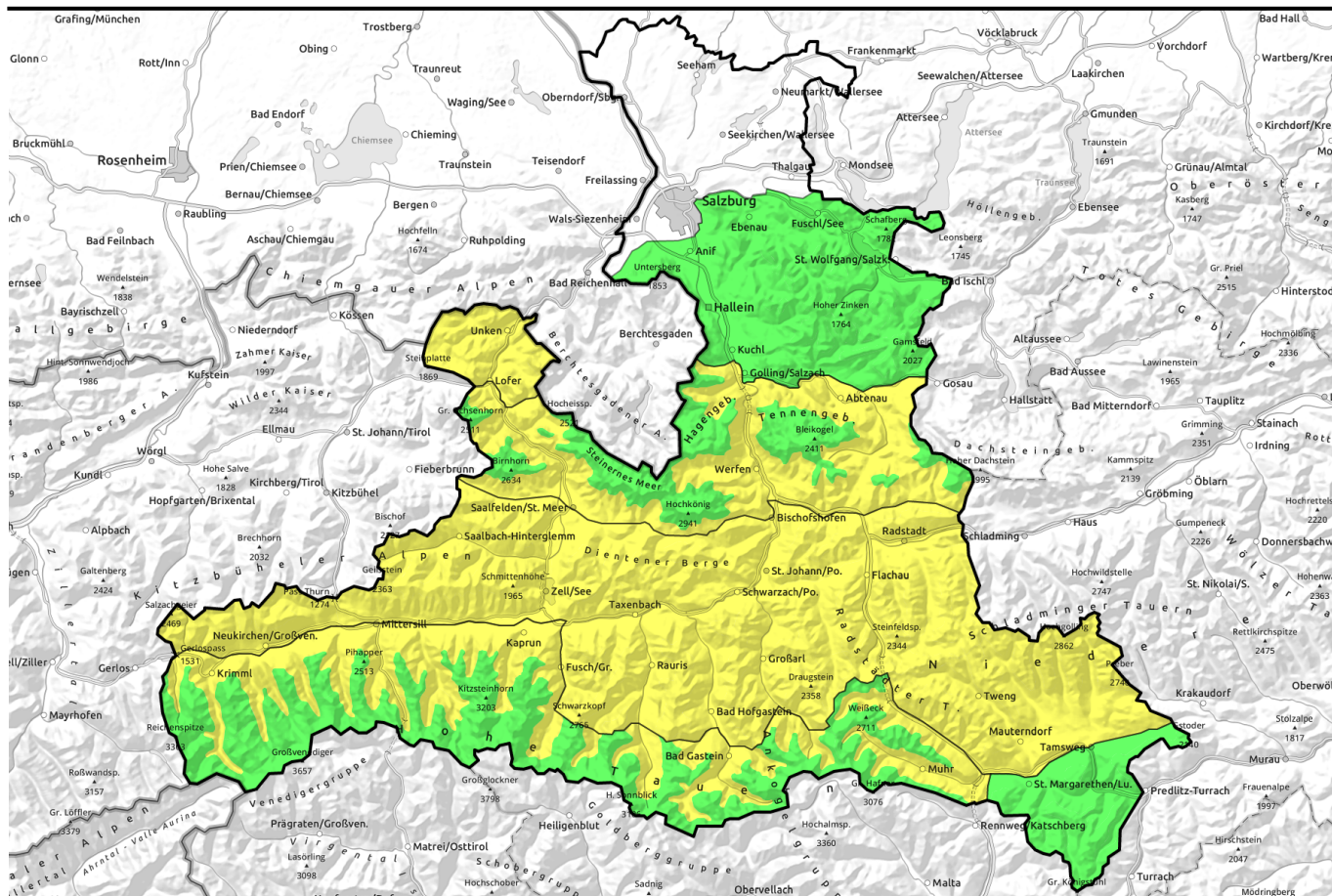
Danger ratings



Expositions



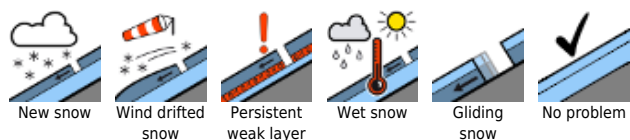
26.03.2022, afternoon



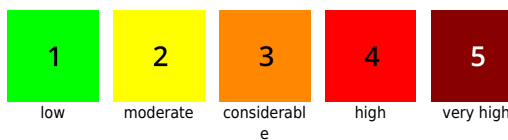
Frühlingsverhältnisse, Tagesgang auf MÄßIG

	<p>Nockberge, Untersbergstock, Osterhorngruppe, Gamsfeldgruppe</p>	
	<p>Chiemgauer Alpen, Heutal, Reiteralpe, Kitzbüheler Alpen, Glemmtal, Oberpinzgauer Grasberge, Dientner Grasberge, Pongauer Grasberge, Niedere Tauern Nord, Niedere Tauern Alpenhauptkamm, Goldberggruppe Nord, Niedere Tauern Süd</p>	
 2400 m	<p>Tennengebirge, Gosaukamm, Steinernes Meer, Hochkönig, Hagengebirge, Göllstock, Loferer und Leoganger Steinberge, Großvenedigergruppe Nord, Großvenedigergruppe Alpenhauptkamm, Glocknergruppe Nord, Glocknergruppe Alpenhauptkamm, Goldberggruppe Alpenhauptkamm, Ankogelgruppe, Muhr</p>	

Avalanche problems



Danger ratings

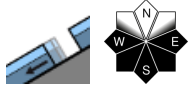


Expositions

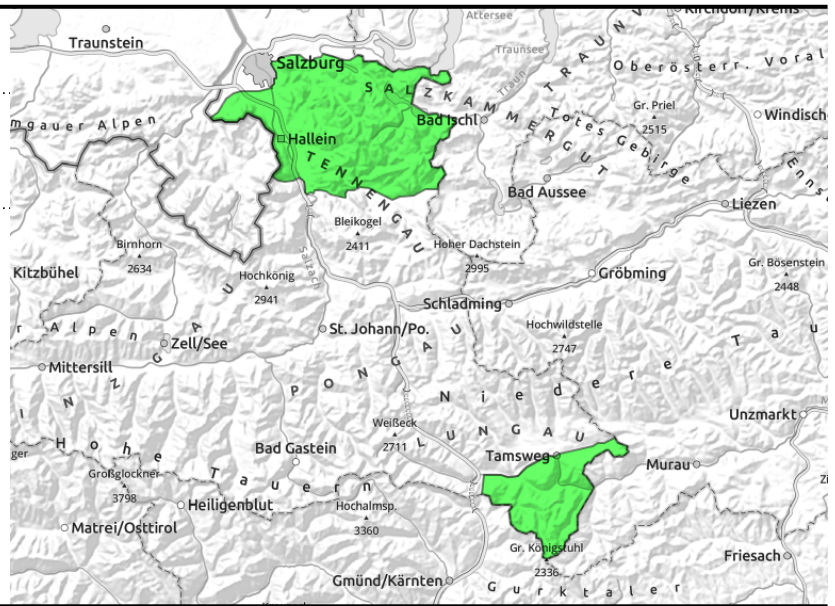


26.03.2022

Nockberge, Untersbergstock, Osterhorngruppe, Gamsfeldgruppe



on extremely steep grass-covered slopes, still very few, small-to-medium, below average snow depths



Snow transforms swiftly to firn on sunny slopes

Avalanche danger is initially LOW, then rises during the day yet stays in this danger level. Isolated, seldom glide snow avalanches (small-to-medium) are possible at any time of day or night in very steep grass-covered terrain, though the likelihood is greatest in afternoon and evening. Heed glide cracks.

Snowpack structure

The snowpack is capable of bearing loads to start with, often hard-as-steel and icy. During the course of the day it softens slowly. On sunny slopes the uppermost 10-15 cm become soft.

Weather

Continuing sunny days, clear skies at night.

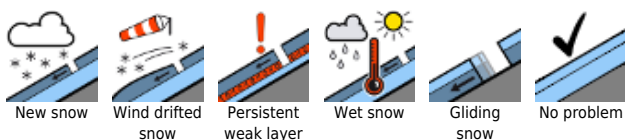
On Saturday morning, cloudless skies, some convective clouds in the afternoon. Good visibility, light winds. At 2000 m: 3 degrees.

On Sunday, sunny, little wind, good visibility. At 2000 m: 4 degrees.

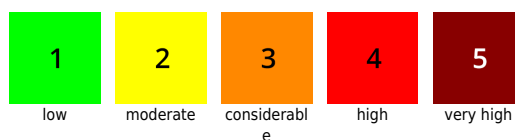
Outlook

Little change

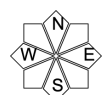
Avalanche problems



Danger ratings

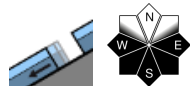
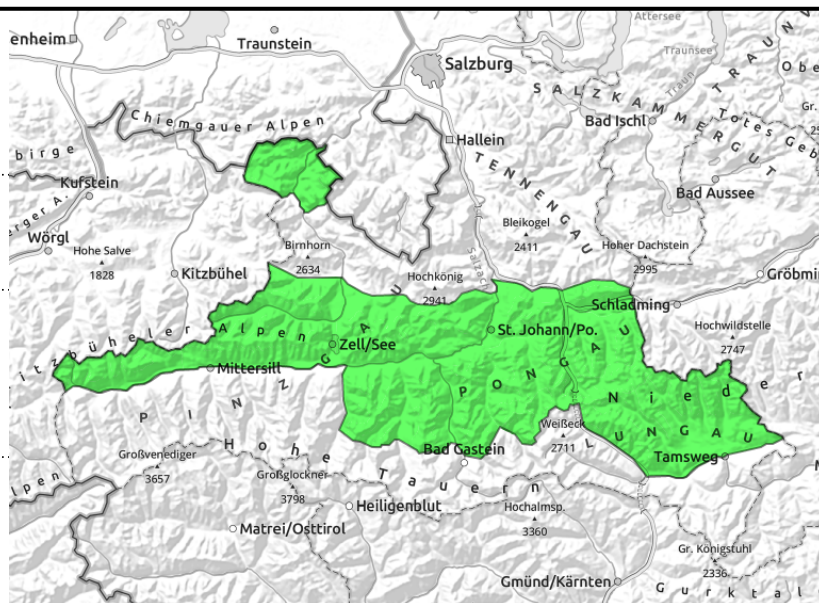


Expositions



26.03.2022, morning

Chiemgauer Alpen, Heutal, Reiteralpe, Kitzbüheler Alpen, Glemmtal, Oberpinzgauer Grasberge, Dientner Grasberge, Pongauer Grasberge, Niedere Tauern Nord, Niedere Tauern Alpenhauptkamm, Goldberggruppe Nord, Niedere Tauern Süd



on extremely steep grass-covered slopes, still few releases but they can grow large in isolated cases



melt-freeze crust turns varyingly quickly to firm depending on aspect/altitude, thereafter heed moistening

Top springtime conditions in early hours, thereafter heed daytime cycle

Avalanche danger in the morning is LOW at all altitudes, then increases due to loss of snowpack firmness to MODERATE.

On sun-drenched steep slopes (SE/S/SW) starting at midday, naturally triggered or skier-triggered small-to-medium wet loose-snow avalanches are possible (SE slopes), mostly in extremely steep terrain.

Glide-snow avalanches (medium-to-isolated-large sized) in very steep grass-covered terrain are possible at any time of day or night, though the likelihood is greatest in afternoon and in evening. Heed glide cracks.

Snowpack structure

The snowpack is capable of bearing loads to start with. In some places hard as steel and icy. During the day the snow slowly softens up. On sunny slopes the uppermost 10-15 cm become soft, on west-facing and north-facing slopes the snow remain hard for longer.

Weather

Continuing sunny days, clear skies at night due to high-pressure weather conditions.

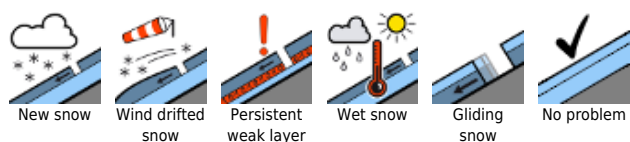
On Saturday morning, cloudless skies, some convective clouds in the afternoon. Good visibility, light winds. At 2000 m: 3 degrees.

On Sunday, sunny, little wind, good visibility. At 2000 m: 4 degrees.

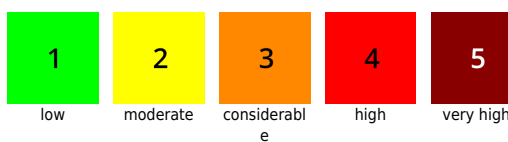
Outlook

Little change. Snowpack swiftly becoming shallower on sunny slopes in particular.

Avalanche problems



Danger ratings

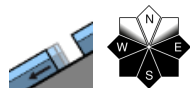
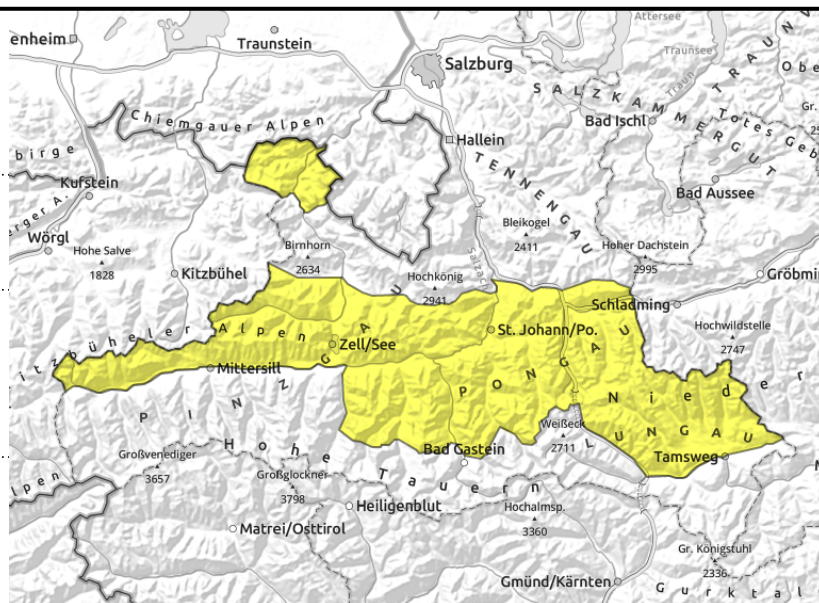


Expositions



26.03.2022, afternoon

Chiemgauer Alpen, Heutal, Reiteralpe, Kitzbüheler Alpen, Glemmtal, Oberpinzgauer Grasberge, Dientner Grasberge, Pongauer Grasberge, Niedere Tauern Nord, Niedere Tauern Alpenhauptkamm, Goldberggruppe Nord, Niedere Tauern Süd



on extremely steep grass-covered slopes, still few releases but they can grow large in isolated cases



melt-freeze crust turns varyingly quickly to firm depending on aspect/altitude, thereafter heed moistening

Top springtime conditions in early hours, thereafter heed daytime cycle

Avalanche danger in the morning is LOW at all altitudes, then increases due to loss of snowpack firmness to MODERATE.

On sun-drenched steep slopes (SE/S/SW) starting at midday, naturally triggered or skier-triggered small-to-medium wet loose-snow avalanches are possible (SE slopes), mostly in extremely steep terrain.

Glide-snow avalanches (medium-to-isolated-large sized) in very steep grass-covered terrain are possible at any time of day or night, though the likelihood is greatest in afternoon and in evening. Heed glide cracks.

Snowpack structure

The snowpack is capable of bearing loads to start with. In some places hard as steel and icy. During the day the snow slowly softens up. On sunny slopes the uppermost 10-15 cm become soft, on west-facing and north-facing slopes the snow remain hard for longer.

Weather

Continuing sunny days, clear skies at night due to high-pressure weather conditions.

On Saturday morning, cloudless skies, some convective clouds in the afternoon. Good visibility, light winds. At 2000 m: 3 degrees.

On Sunday, sunny, little wind, good visibility. At 2000 m: 4 degrees.

Outlook

Little change. Snowpack swiftly becoming shallower on sunny slopes in particular.

Avalanche problems



Danger ratings

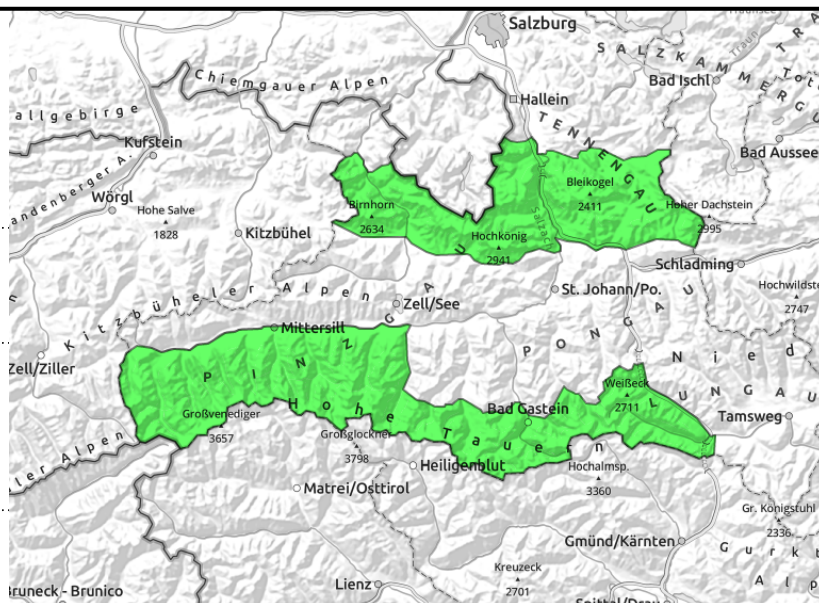


Expositions



26.03.2022, morning

Tennengebirge, Gosaukamm, Steinernes Meer, Hochkönig, Hagengebirge, Göllstock, Loferer und Leoganger Steinberge, Großvenedigergruppe Nord, Großvenedigergruppe Alpenhauptkamm, Glocknergruppe Nord, Glocknergruppe Alpenhauptkamm, Goldberggruppe Alpenhauptkamm, Ankogelgruppe, Muhr



on extremely steep grass-covered slopes, still few releases, but then medium-to-large, below 2400m



melt-freeze crust turns to firn depending on aspect/altitude, thereafter heed moistening, below 2400m

Top springtime conditions in early hours, daytime cycle below 2400m

Avalanche danger in the morning is LOW at all altitudes, then increases due to loss of snowpack firmness to MODERATE below 2400m.

On sun-drenched steep slopes (SE/S/SW) starting at midday, naturally triggered or skier-triggered small-to-medium wet loose-snow avalanches are possible (SE slopes), mostly in extremely steep terrain.

Glide-snow avalanches (medium-to-isolated-large sized) in very steep grass-covered terrain are possible at any time of day or night, though the likelihood is greatest in afternoon and in evening. Heed glide cracks.

Snowpack structure

The snowpack is capable of bearing loads to start with. In some places hard as steel and icy. During the day the snow slowly softens up. On sunny slopes the uppermost 10-15 cm become soft, on west-facing and north-facing slopes the snow remain hard for longer.

Weather

Sunny on Saturday morning, some convective clouds in the afternoon. Good visibility, light winds. At 2000 m: 3 degrees, at 3000 m: -5 degrees.

On Sunday, sunny, little wind, good visibility. At 2000 m: 4 degrees, at 3000 m: -3 degrees.

Outlook

Little change

Avalanche problems



Danger ratings

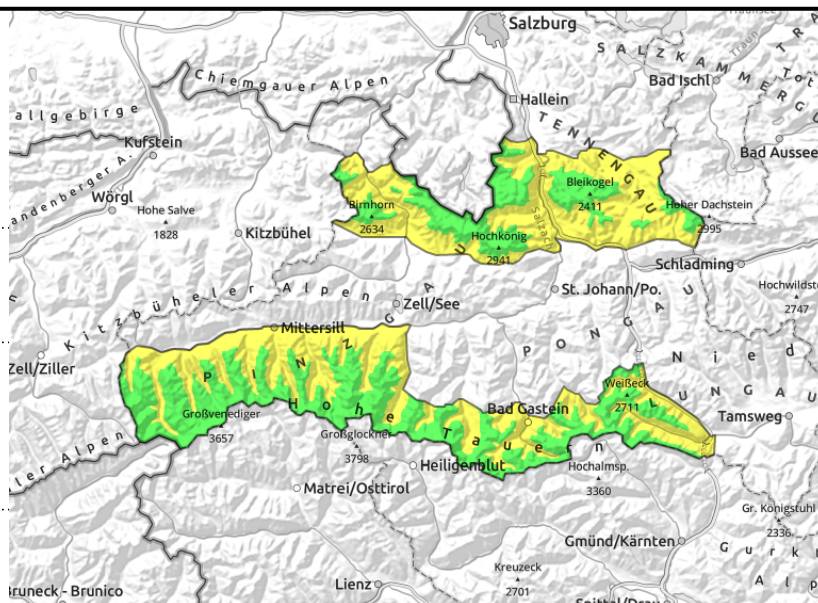


Expositions



26.03.2022, afternoon

Tennengebirge, Gosaukamm, Steinernes Meer, Hochkönig, Hagengebirge, Göllstock, Loferer und Leoganger Steinberge, Großvenedigergruppe Nord, Großvenedigergruppe Alpenhauptkamm, Glocknergruppe Nord, Glocknergruppe Alpenhauptkamm, Goldberggruppe Alpenhauptkamm, Ankogelgruppe, Muhr



on extremely steep grass-covered slopes, still few releases, but then medium-to-large, below 2400m



melt-freeze crust turns to firn depending on aspect/altitude, thereafter heed moistening, below 2400m

Top springtime conditions in early hours, daytime cycle below 2400m

Avalanche danger in the morning is LOW at all altitudes, then increases due to loss of snowpack firmness to MODERATE below 2400m.

On sun-drenched steep slopes (SE/SW) starting at midday, naturally triggered or skier-triggered small-to-medium wet loose-snow avalanches are possible (SE slopes), mostly in extremely steep terrain.

Glide-snow avalanches (medium-to-isolated-large sized) in very steep grass-covered terrain are possible at any time of day or night, though the likelihood is greatest in afternoon and in evening. Heed glide cracks.

Snowpack structure

The snowpack is capable of bearing loads to start with. In some places hard as steel and icy. During the day the snow slowly softens up. On sunny slopes the uppermost 10-15 cm become soft, on west-facing and north-facing slopes the snow remain hard for longer.

Weather

Sunny on Saturday morning, some convective clouds in the afternoon. Good visibility, light winds. At 2000 m: 3 degrees, at 3000 m: -5 degrees.

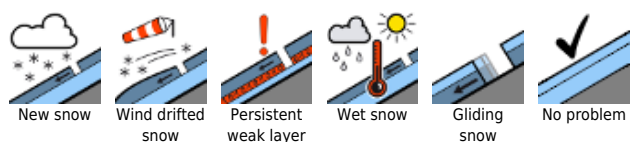
On Sunday, sunny, little wind, good visibility. At 2000 m: 4 degrees, at 3000 m: -3 degrees.

Outlook

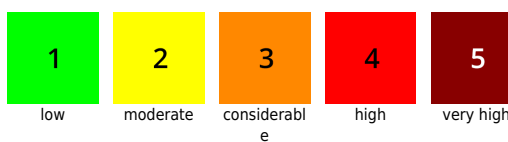
Little change

Translated by Jeffrey McCabe, www.creativtrans.com

Avalanche problems



Danger ratings



Expositions

