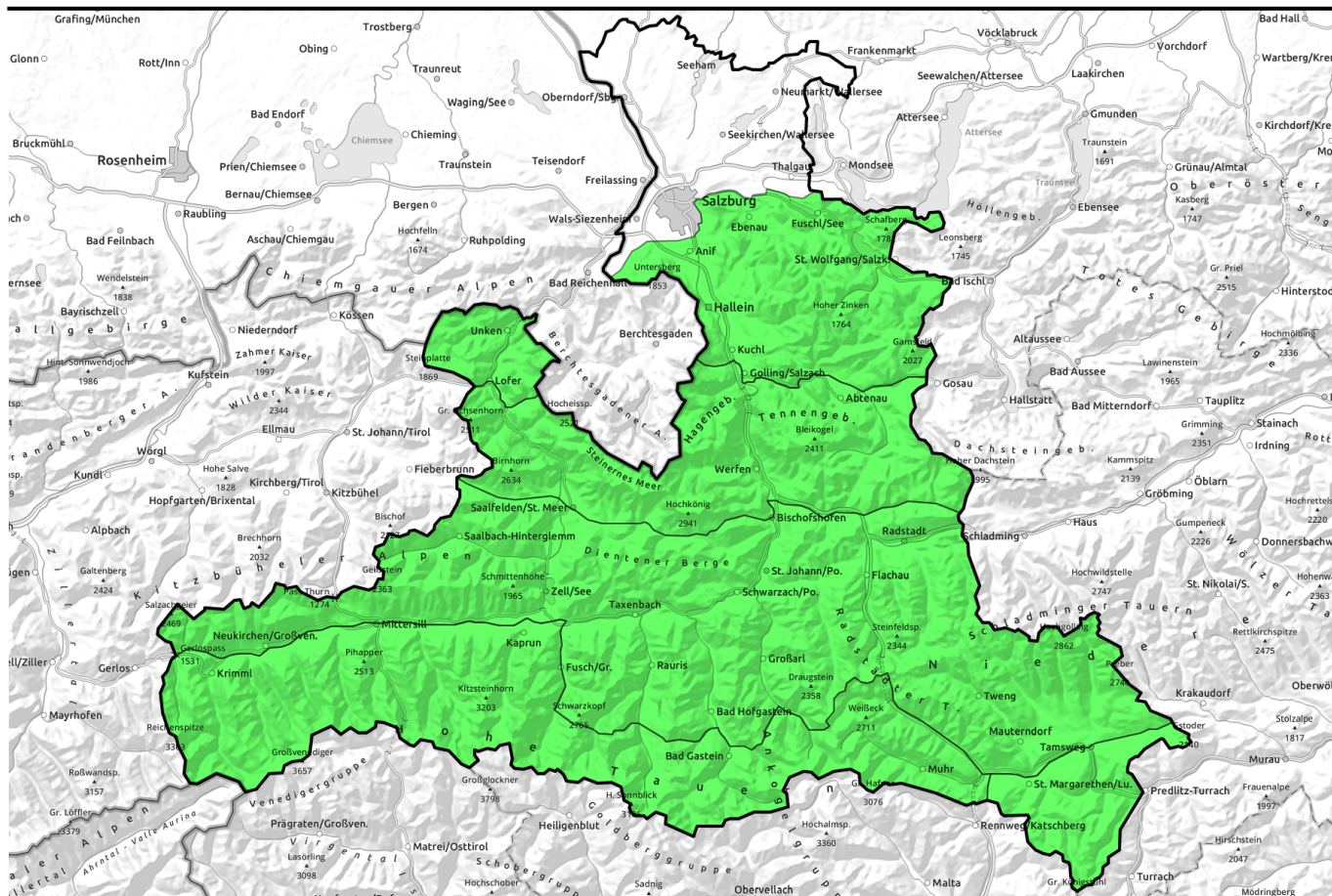


25.03.2022, morning



Classic springtime conditions, daytime danger cycle rising to MODERATE



Nockberge, Untersbergstock, Osterhorngruppe, Gamsfeldgruppe



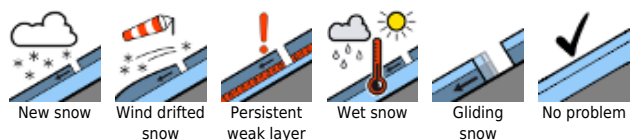
Chiemgauer Alpen, Heutal, Reiteralpe, Kitzbüheler Alpen, Glemmtal, Oberpinzgauer Grasberge, Dientner Grasberge, Pongauer Grasberge, Niedere Tauern Nord, Niedere Tauern Alpenhauptkamm, Goldberggruppe Nord, Niedere Tauern Süd



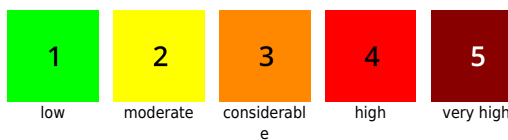
Tennengebirge, Gosaukamm, Steinernes Meer, Hochkönig, Hagengebirge, Gölstock, Loferer und Leoganger Steinberge, Großvenedigergruppe Nord, Großvenedigergruppe Alpenhauptkamm, Glocknergruppe Nord, Glocknergruppe Alpenhauptkamm, Goldberggruppe Alpenhauptkamm, Ankogelgruppe, Muhr



Avalanche problems



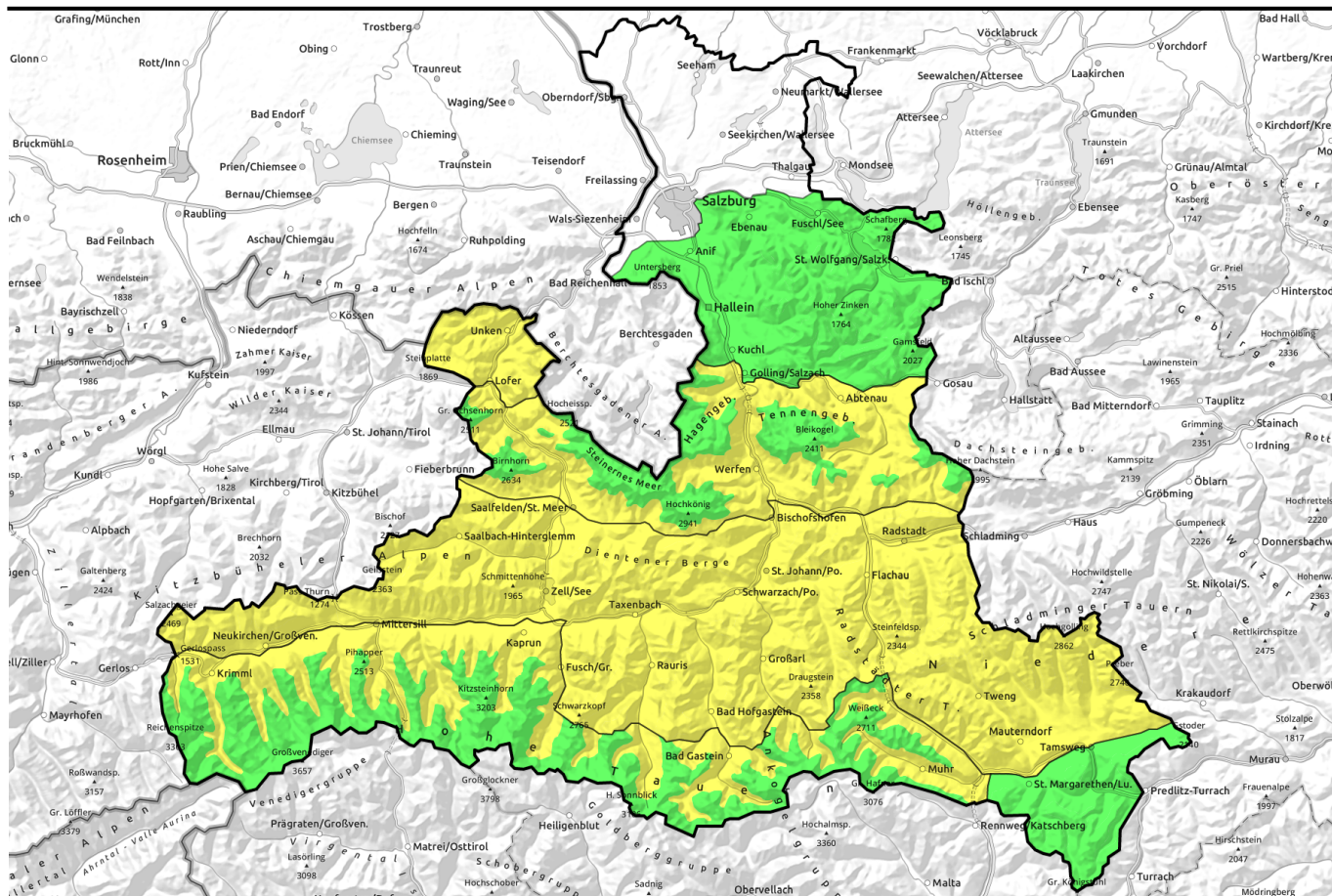
Danger ratings



Expositions



25.03.2022, afternoon



Unverändert: Top Frühlingsverhältnisse, Tagesgang auf MÄßIG



Nockberge, Untersbergstock, Osterhorngruppe, Gamsfeldgruppe



Chiemgauer Alpen, Heutal, Reiteralpe, Kitzbüheler Alpen, Glemmtal, Oberpinzgauer Grasberge, Dientner Grasberge, Pongauer Grasberge, Niedere Tauern Nord, Niedere Tauern Alpenhauptkamm, Goldberggruppe Nord, Niedere Tauern Süd

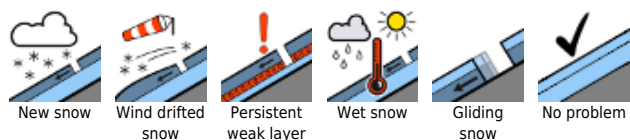


2400 m

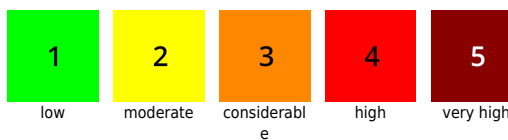
Tennengebirge, Gosaukamm, Steinernes Meer, Hochkönig, Hagengebirge, Göllstock, Loferer und Leoganger Steinberge, Großvenedigergruppe Nord, Großvenedigergruppe Alpenhauptkamm, Glocknergruppe Nord, Glocknergruppe Alpenhauptkamm, Goldberggruppe Alpenhauptkamm, Ankogelgruppe, Muhr



Avalanche problems



Danger ratings

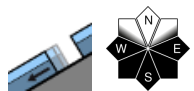


Expositions

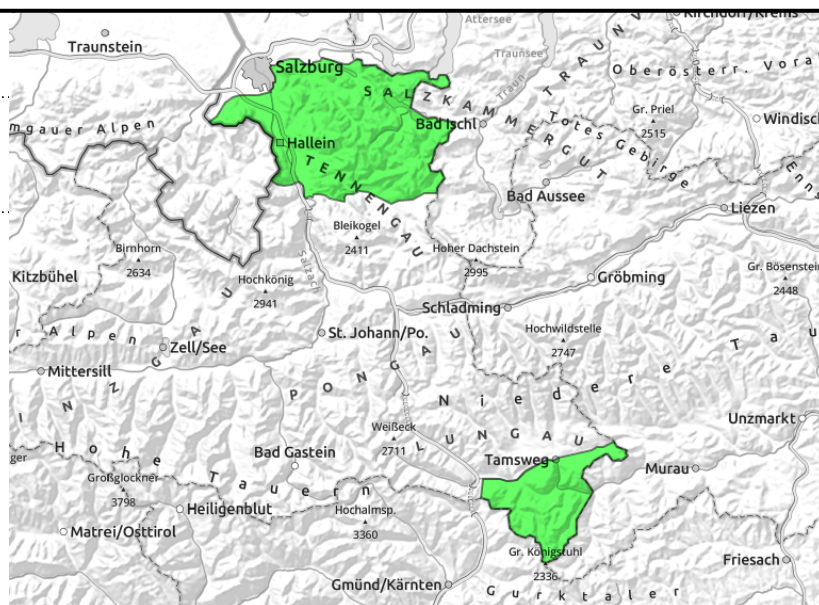


25.03.2022

Nockberge, Untersbergstock, Osterhorngruppe, Gamsfeldgruppe



on extremely steep grass-covered slopes, still very few, small-to-medium, below average snow depths



Best springtime conditions, slight daytime cycle

Avalanche danger is initially LOW, then rises during the day yet stays in this danger level. Isolated, seldom glide snow avalanches (small-to-medium) are possible at any time of day or night in very steep grass-covered terrain, though the likelihood is greatest in afternoon and evening. Heed glide cracks.

Snowpack structure

The snowpack is capable of bearing loads to start with, often hard-as-steel and icy. During the course of the day it softens slowly. On sunny slopes the uppermost 10-15 cm become soft, on west-facing and north-facing slopes it remains hard for longer. Glide-snow activity on extremely steep slopes tends to increase day by day.

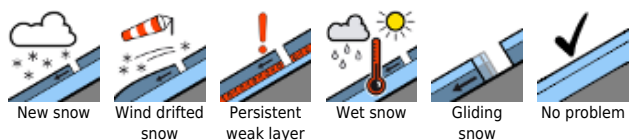
Weather

On Friday, predominantly sunshine. Convective cloud build-up during the afternoon, some peaks might be shrouded. Minor showers are possible. Hardly any wind. At 2000 m: +3 degrees. On Saturday, lots of sunshine, outstanding visibility. In the afternoon some convective cloud build-up. Winds will remain light. At 2000 m: +3 degrees.

Outlook

On the weekend, basically unchanged. The nocturnal skies will be clear, the mornings perfect, although this depends on altitude and aspect and catching the right moment.

Avalanche problems



Danger ratings

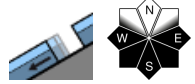
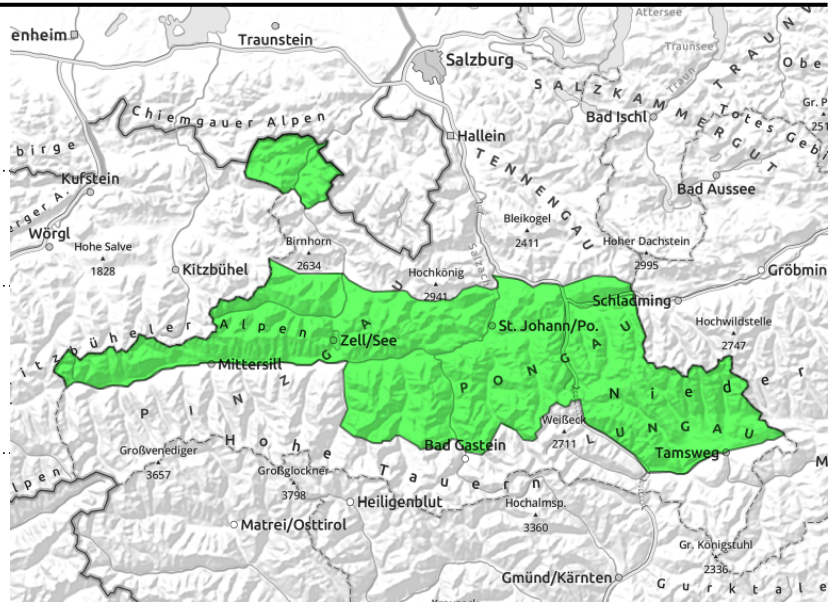


Expositions



25.03.2022, morning

Chiemgauer Alpen, Heutal, Reiteralpe, Kitzbüheler Alpen, Glemmtal, Oberpinzgauer Grasberge, Dientner Grasberge, Pongauer Grasberge, Niedere Tauern Nord, Niedere Tauern Alpenhauptkamm, Goldberggruppe Nord, Niedere Tauern Süd



on extremely steep grass-covered slopes, still few releases but they can grow large in isolated cases



melt-freeze crust turns to firm depending on aspect/altitude, thereafter heed moistening

Top springtime conditions in early hours, thereafter heed daytime cycle

Avalanche danger in the morning is **LOW at all altitudes, then increases due to loss of snowpack firmness to MODERATE.**

On sun-drenched steep slopes (SE/S/SW) starting at midday, naturally triggered or skier-triggered small-to-medium wet loose-snow avalanches are possible (SE slopes), mostly in extremely steep terrain.

Glide-snow avalanches (medium-to-isolated-large sized) in very steep grass-covered terrain are possible at any time of day or night, though the likelihood is greatest in afternoon and in evening. Heed glide cracks.

Snowpack structure

The snowpack is capable of bearing loads to start with. In some places hard as steel and icy. During the day the snow slowly softens up. On sunny slopes the uppermost 10-15 cm become soft, on west-facing and north-facing slopes the snow remain hard for longer. Sporadic glide-snow activity is increasing day by day in extremely steep terrain.

Weather

On Friday, predominantly sunshine. Convective cloud build-up during the afternoon, some peaks might be shrouded. Minor showers are possible. Hardly any wind. At 2000 m: +3 degrees.

On Saturday, lots of sunshine, outstanding visibility. In the afternoon some convective cloud build-up. Winds will remain light. At 2000 m: +3 degrees.

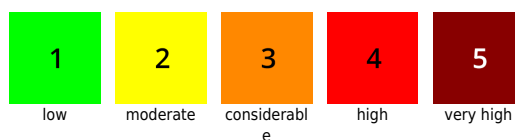
Outlook

On the weekend, basically unchanged. The nocturnal skies will be clear, the mornings perfect, although this depends on altitude and aspect and catching the right moment.

Avalanche problems



Danger ratings

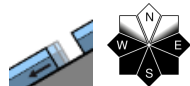
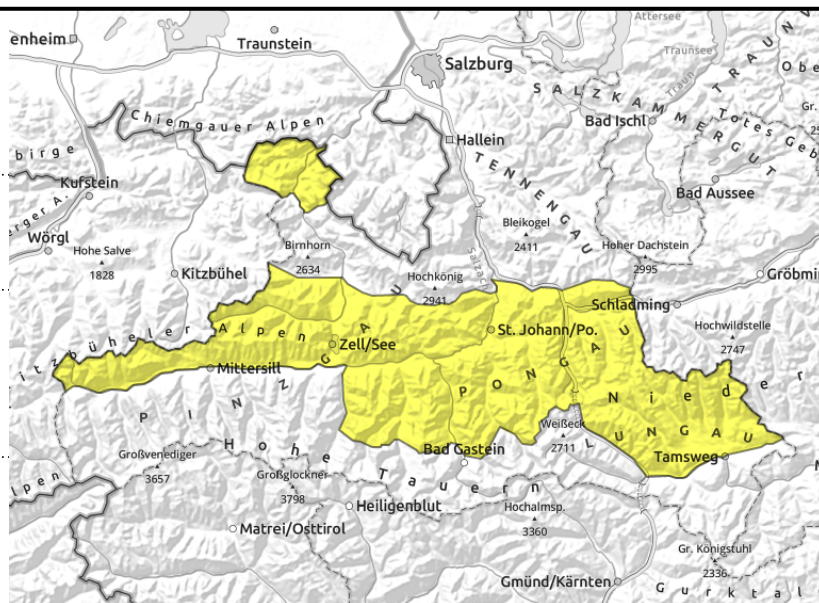


Expositions



25.03.2022, afternoon

Chiemgauer Alpen, Heutal, Reiteralpe, Kitzbüheler Alpen, Glemmtal, Oberpinzgauer Grasberge, Dientner Grasberge, Pongauer Grasberge, Niedere Tauern Nord, Niedere Tauern Alpenhauptkamm, Goldberggruppe Nord, Niedere Tauern Süd



on extremely steep grass-covered slopes, still few releases but they can grow large in isolated cases



melt-freeze crust turns to firm depending on aspect/altitude, thereafter heed moistening

Top springtime conditions in early hours, thereafter heed daytime cycle

Avalanche danger in the morning is **LOW at all altitudes, then increases due to loss of snowpack firmness to MODERATE.**

On sun-drenched steep slopes (SE/S/SW) starting at midday, naturally triggered or skier-triggered small-to-medium wet loose-snow avalanches are possible (SE slopes), mostly in extremely steep terrain.

Glide-snow avalanches (medium-to-isolated-large sized) in very steep grass-covered terrain are possible at any time of day or night, though the likelihood is greatest in afternoon and in evening. Heed glide cracks.

Snowpack structure

The snowpack is capable of bearing loads to start with. In some places hard as steel and icy. During the day the snow slowly softens up. On sunny slopes the uppermost 10-15 cm become soft, on west-facing and north-facing slopes the snow remain hard for longer. Sporadic glide-snow activity is increasing day by day in extremely steep terrain.

Weather

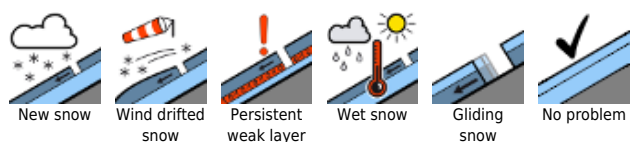
On Friday, predominantly sunshine. Convective cloud build-up during the afternoon, some peaks might be shrouded. Minor showers are possible. Hardly any wind. At 2000 m: +3 degrees.

On Saturday, lots of sunshine, outstanding visibility. In the afternoon some convective cloud build-up. Winds will remain light. At 2000 m: +3 degrees.

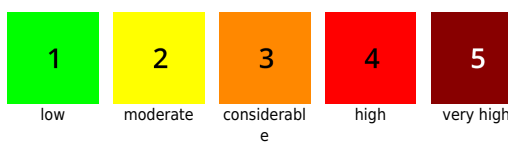
Outlook

On the weekend, basically unchanged. The nocturnal skies will be clear, the mornings perfect, although this depends on altitude and aspect and catching the right moment.

Avalanche problems



Danger ratings

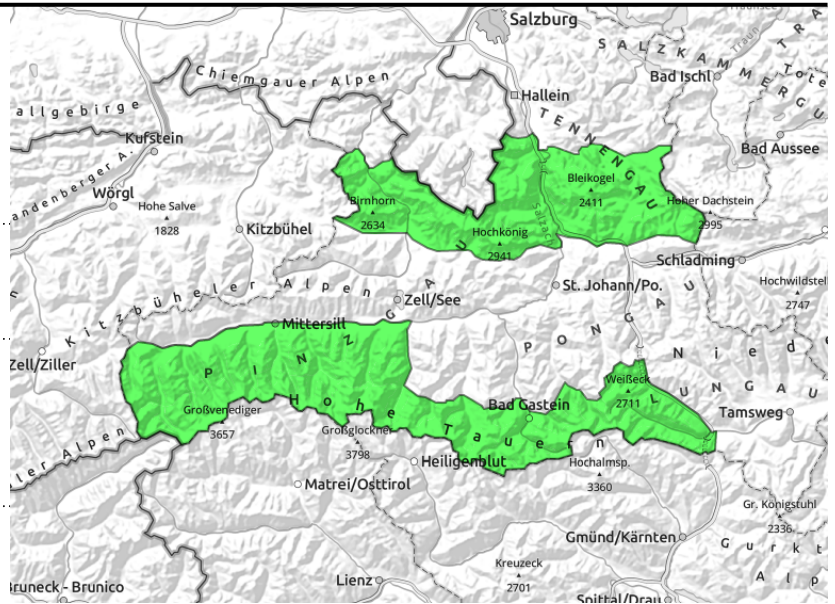


Expositions



25.03.2022, morning

Tennengebirge, Gosaukamm, Steinernes Meer, Hochkönig, Hagengebirge, Göllstock, Loferer und Leoganger Steinberge, Großvenedigergruppe Nord, Großvenedigergruppe Alpenhauptkamm, Glocknergruppe Nord, Glocknergruppe Alpenhauptkamm, Goldberggruppe Alpenhauptkamm, Ankogelgruppe, Muhr



on extremely steep grass-covered slopes, still few releases, but then medium-to-large, below 2400m



melt-freeze crust turns to firn depending on aspect/altitude, thereafter heed moistening, below 2400m

Top springtime conditions in early hours, daytime cycle below 2400m

Avalanche danger in the morning is **LOW at all altitudes, then increases due to loss of snowpack firmness to MODERATE below 2400m.**

On sun-drenched steep slopes (SE/S/SW) starting at midday, naturally triggered or skier-triggered small-to-medium wet loose-snow avalanches are possible (SE slopes), mostly in extremely steep terrain.

Glide-snow avalanches (medium-to-isolated-large sized) in very steep grass-covered terrain are possible at any time of day or night, though the likelihood is greatest in afternoon and in evening. Heed glide cracks.

Snowpack structure

The snowpack is capable of bearing loads to start with. In some places hard as steel and icy. During the day the snow slowly softens up. On sunny slopes the uppermost 10-15 cm become soft, on west-facing and north-facing slopes the snow remain hard for longer. Sporadic glide-snow activity is increasing day by day in extremely steep terrain.

Weather

On Friday, predominantly sunshine. Convective cloud build-up during the afternoon, some peaks might be shrouded. Minor showers are possible. Hardly any wind. At 2000 m: +3 degrees.

On Saturday, lots of sunshine, outstanding visibility. In the afternoon some convective cloud build-up. Winds will remain light. At 2000 m: +3 degrees.

Outlook

On the weekend, basically unchanged. The nocturnal skies will be clear, the mornings perfect, although this depends on altitude and aspect and catching the right moment. The wet-snow/glide-snow problem is heightened in the afternoon due to higher air moisture (level MODERATE).

Avalanche problems



New snow



Wind drifted snow



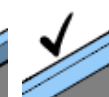
Persistent weak layer



Wet snow



Gliding snow



No problem

Danger ratings



1

low



2

moderate



3

considerable



4

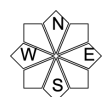
high



5

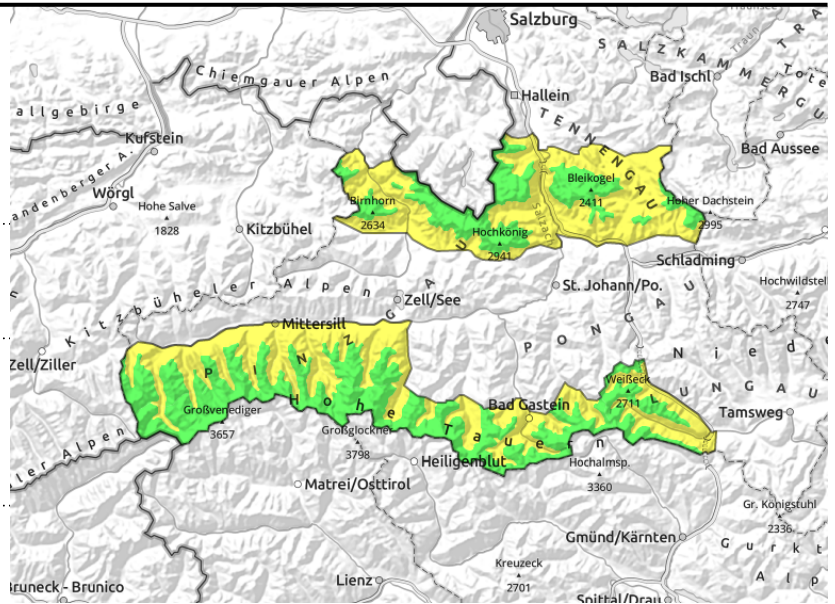
very high

Expositions



25.03.2022, afternoon

Tennengebirge, Gosaukamm, Steinernes Meer, Hochkönig, Hagengebirge, Göllstock, Loferer und Leoganger Steinberge, Großvenedigergruppe Nord, Großvenedigergruppe Alpenhauptkamm, Glocknergruppe Nord, Glocknergruppe Alpenhauptkamm, Goldberggruppe Alpenhauptkamm, Ankogelgruppe, Muhr



on extremely steep grass-covered slopes, still few releases, but then medium-to-large, below 2400m



melt-freeze crust turns to firn depending on aspect/altitude, thereafter heed moistening, below 2400m

Top springtime conditions in early hours, daytime cycle below 2400m

Avalanche danger in the morning is **LOW at all altitudes, then increases due to loss of snowpack firmness to MODERATE below 2400m.**

On sun-drenched steep slopes (SE/S/SW) starting at midday, naturally triggered or skier-triggered small-to-medium wet loose-snow avalanches are possible (SE slopes), mostly in extremely steep terrain.

Glide-snow avalanches (medium-to-isolated-large sized) in very steep grass-covered terrain are possible at any time of day or night, though the likelihood is greatest in afternoon and in evening. Heed glide cracks.

Snowpack structure

The snowpack is capable of bearing loads to start with. In some places hard as steel and icy. During the day the snow slowly softens up. On sunny slopes the uppermost 10-15 cm become soft, on west-facing and north-facing slopes the snow remain hard for longer. Sporadic glide-snow activity is increasing day by day in extremely steep terrain.

Weather

On Friday, predominantly sunshine. Convective cloud build-up during the afternoon, some peaks might be shrouded. Minor showers are possible. Hardly any wind. At 2000 m: +3 degrees.

On Saturday, lots of sunshine, outstanding visibility. In the afternoon some convective cloud build-up. Winds will remain light. At 2000 m: +3 degrees.

Outlook

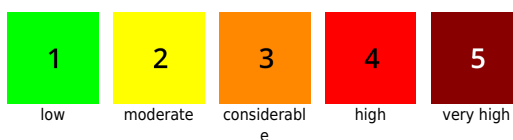
On the weekend, basically unchanged. The nocturnal skies will be clear, the mornings perfect, although this depends on altitude and aspect and catching the right moment. The wet-snow/glide-snow problem is heightened in the afternoon due to higher air moisture (level MODERATE).

Translated by Jeffrey McCabe, www.creativtrans.com

Avalanche problems



Danger ratings



Expositions

