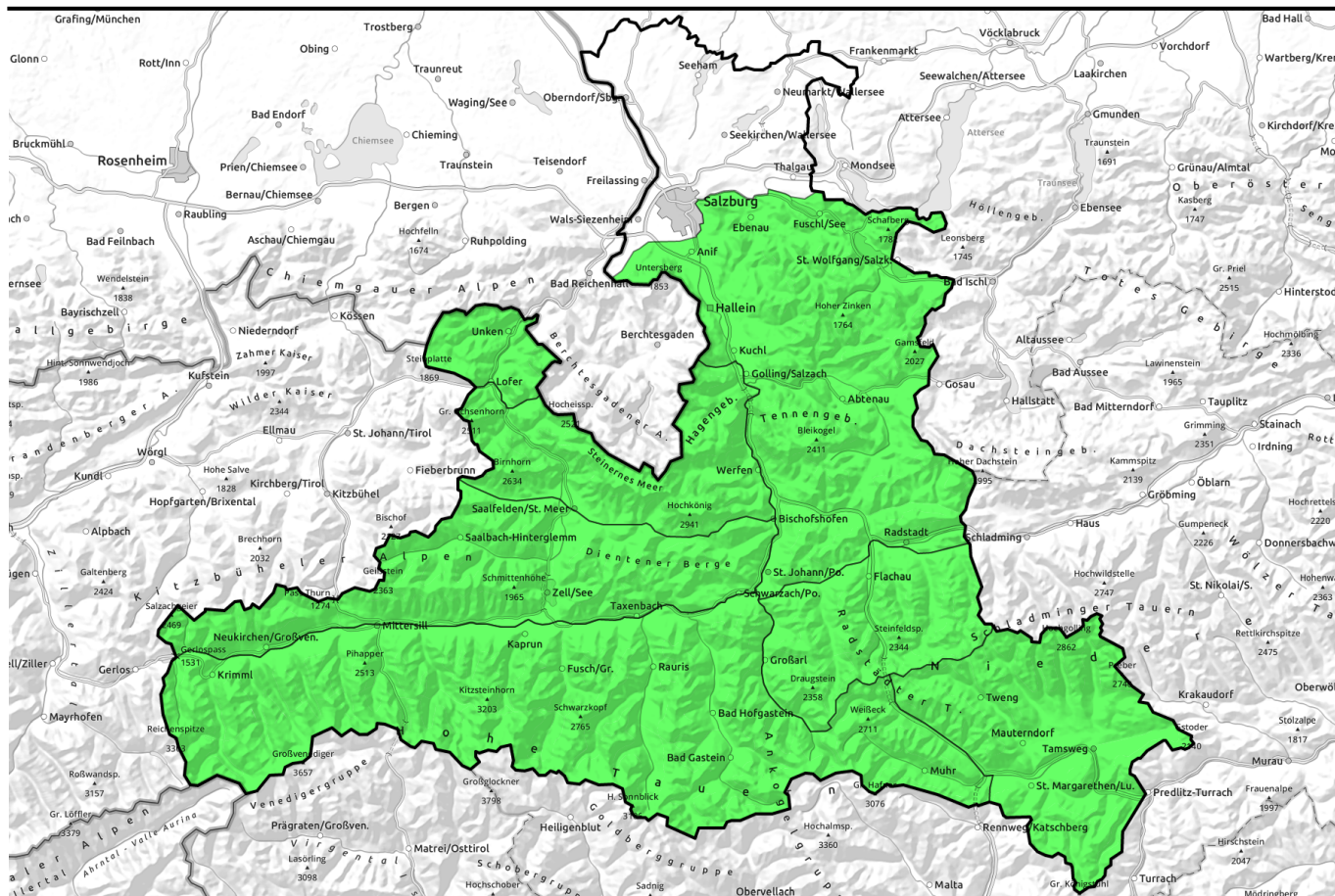


23.03.2022, morning



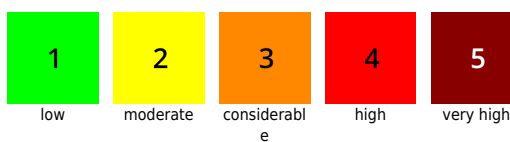
Unimpaired sunshine, very dry air, daytime cycle of naturally triggered avalanches

- Osterhorngruppe, Gamsfeldgruppe, Untersbergstock, Tennengebirge, Gosaukamm, Pongauer Grasberge, Niedere Tauern Süd, Nockberge
- Steinernes Meer, Hochkönig, Hagengebirge, Göllstock, Großvenedigergruppe Nord, Großvenedigergruppe Alpenhauptkamm, Glocknergruppe Alpenhauptkamm, Goldberggruppe Alpenhauptkamm, Glocknergruppe Nord, Goldberggruppe Nord, Ankogelgruppe, Muhr, Loferer und Leoganger Steinberge
- Chiemgauer Alpen, Heutal, Reiteralpe, Kitzbüheler Alpen, Glemmtal, Oberpinzgauer Grasberge, Dientner Grasberge, Niedere Tauern Nord, Niedere Tauern Alpenhauptkamm

Avalanche problems



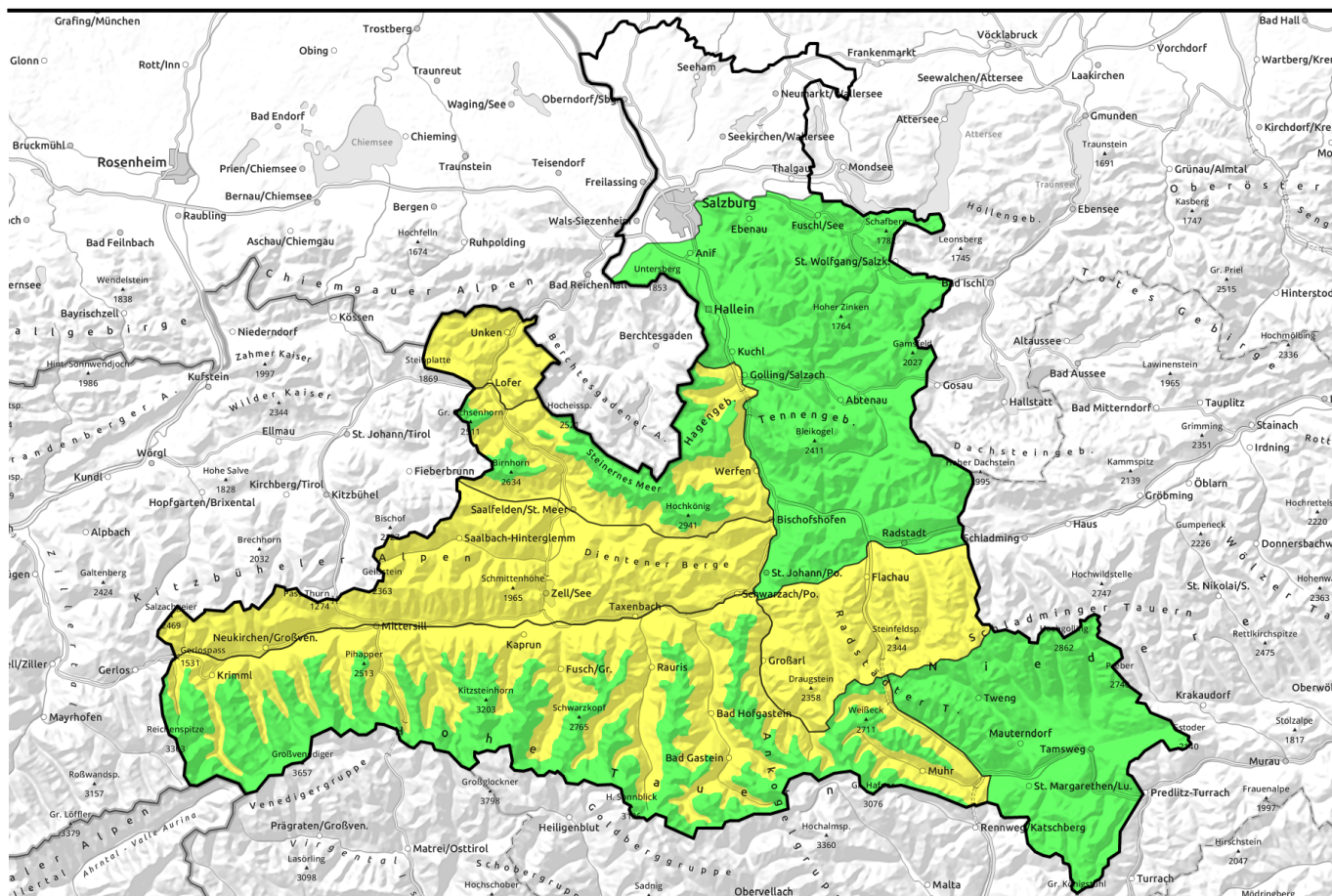
Danger ratings



Expositions



23.03.2022, afternoon



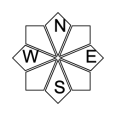
Ungetrübte Sonne und sehr trockene Luft, Tagesgang der spontanen Lawinen

	<p>Osterhorngruppe, Gamsfeldgruppe, Untersbergstock, Tennengebirge, Gosaukamm, Pongauer Grasberge, Niedere Tauern Süd, Nockberge</p>	
	<p>Steinernes Meer, Hochkönig, Hagengebirge, Göllstock, Großvenedigergruppe Nord, Großvenedigergruppe Alpenhauptkamm, Glocknergruppe Alpenhauptkamm, Goldberggruppe Alpenhauptkamm, Glocknergruppe Nord, Goldberggruppe Nord, Ankogelgruppe, Muhr, Loferer und Leoganger Steinberge</p>	
	<p>Chiemgauer Alpen, Heutal, Reiteralpe, Kitzbüheler Alpen, Glemmtal, Oberpinzgauer Grasberge, Dientner Grasberge, Niedere Tauern Nord, Niedere Tauern Alpenhauptkamm</p>	

Avalanche problems

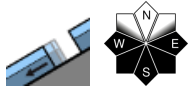
Danger ratings

Expositions

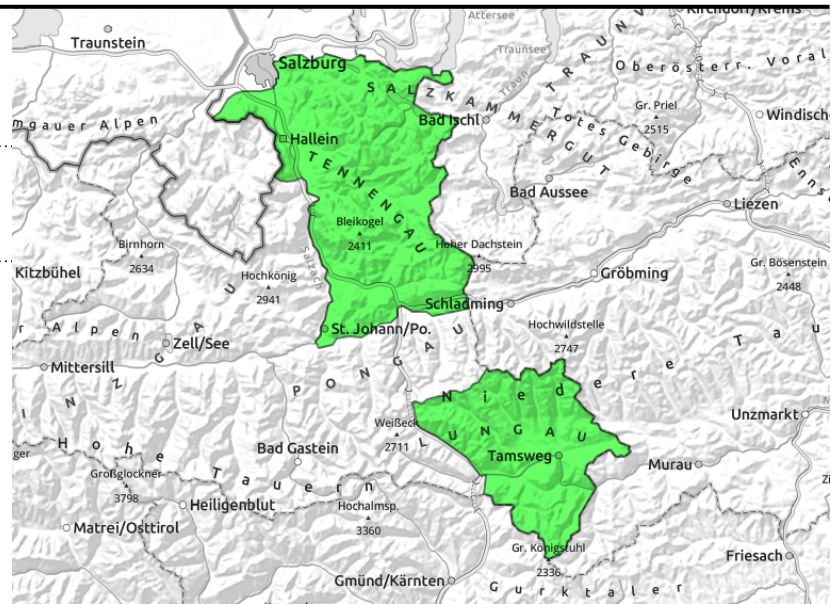


23.03.2022

**Osterhorngruppe, Gamsfeldgruppe,
Untersbergstock, Tennengebirge, Gosaukamm,
Pongauer Grasberge, Niedere Tauern Süd,
Nockberge**



on extremely steep grass-covered slopes, still very few, small-to-medium



Springtime conditions, daytime avalanche danger cycle

Avalanche danger is initially LOW, then rises during the day yet stays in this danger level. Isolated, seldom glide snow avalanches (small-to-medium) are possible at any time of day or night in very steep grass-covered terrain, though the likelihood is greatest in afternoon and evening. Heed glide cracks.

Snowpack structure

The snowpack is capable of bearing loads to start with, often hard-as-steel and icy. During the course of the day it softens slowly. On sunny slopes the uppermost 10 cm become soft, on west-facing and north-facing slopes it remains hard for longer. Glide-snow activity on extremely steep slopes tends to increase through day by day.

Weather

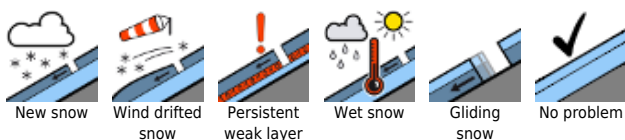
Following a night of clear skies, cloudless and sunny skies on Wednesday. Very low air moisture, lighter winds than yesterday. At 2000 m: +5 degrees.

On Thursday, brilliant sunshine, light winds, slightly moister air, unchanged springtime temperatures.

Outlook

On Thursday, slightly greater cycle of daytime danger, wet-snow / glide-snow avalanches, due to higher air moisture.

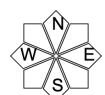
Avalanche problems



Danger ratings

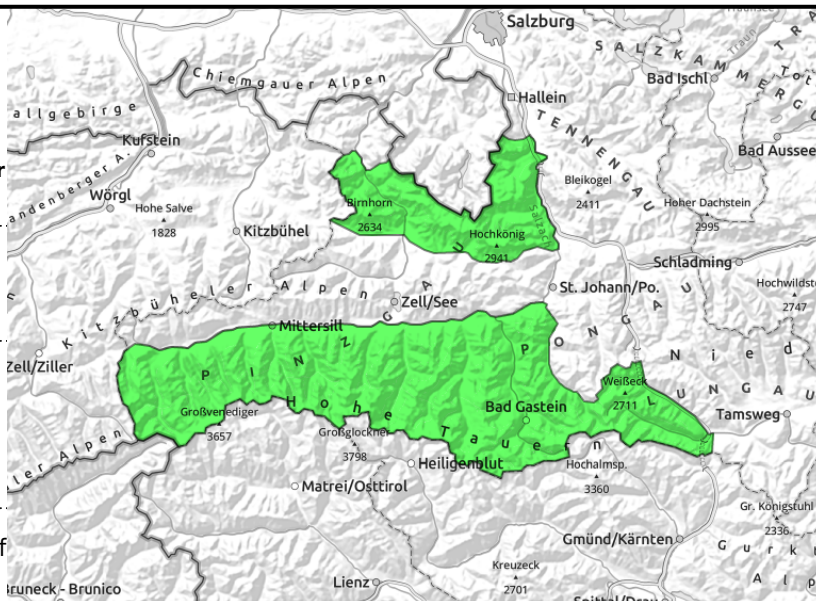


Expositions



23.03.2022, morning

Steinernes Meer, Hochkönig, Hagengebirge, Göllstock, Großvenedigergruppe Nord, Großvenedigergruppe Alpenhauptkamm, Glocknergruppe Alpenhauptkamm, Goldberggruppe Alpenhauptkamm, Glocknergruppe Nord, Goldberggruppe Nord, Ankogelgruppe, Muhr, Loferer und Leoganger Steinberge



on extremely steep grass-covered slopes, still few releases but they can grow large, below 2400m



cold reserves used up by end of morning, heed thoroughly wet snowpack, below 2400 m

Top springtime conditions, daytime cycle below 2400 m

Avalanche danger in the morning is **LOW at all altitudes**, then **increases due to loss of snowpack firmness below 2400 m in extended south-facing slopes to MODERATE**.

On sun-drenched steep slopes (SE/S/SW) starting at midday, naturally triggered or skier-triggered small-to-medium wet loose-snow avalanches are possible, mostly in extremely steep terrain.

Isolated, seldom glide-snow avalanches (medium-to-isolated-large sized) in very steep grass-covered terrain are possible at any time of day or night, though the likelihood is greatest in afternoon and in evening. Heed glide cracks.

Snowpack structure

The snowpack is capable of bearing loads to start with. In some places hard as steel and icy. During the day the snow slowly softens up. On sunny slopes the uppermost 10 cm become soft, on west-facing and north-facing slopes the snow remain hard for longer. On the weekend an increase in glide-snow avalanche activity was observed in extremely steep terrain.

Weather

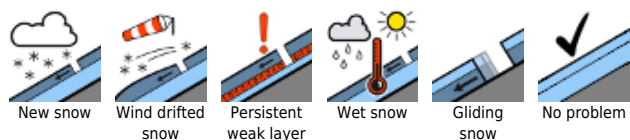
Following a night of clear skies, cloudless and sunny skies on Wednesday. Very low air moisture, lighter winds than yesterday. At 2000 m: +5 degrees.

On Thursday, brilliant sunshine, light winds, slightly moister air, unchanged springtime temperatures.

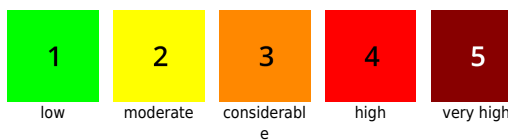
Outlook

On Thursday, slightly greater cycle of daytime danger, wet-snow / glide-snow avalanches, due to higher air moisture.

Avalanche problems



Danger ratings

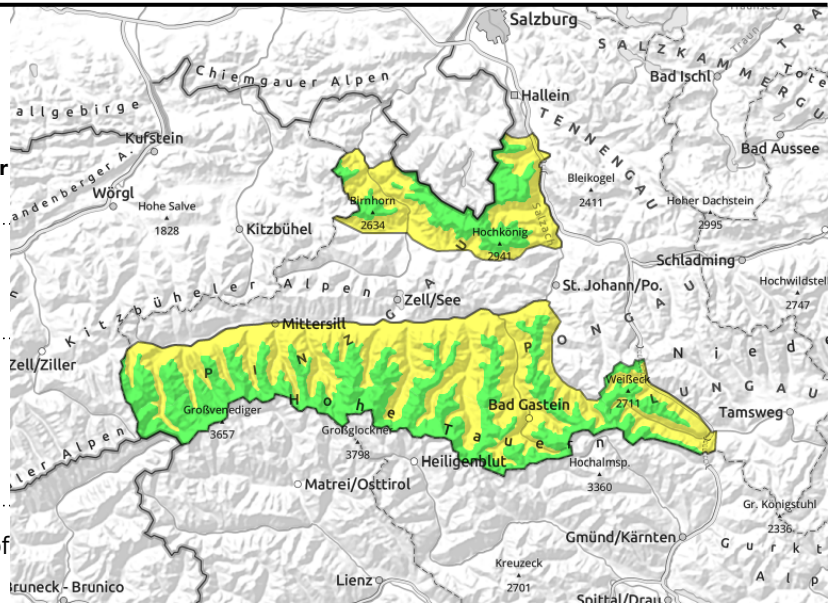


Expositions



23.03.2022, afternoon

Steinernes Meer, Hochkönig, Hagengebirge, Göllstock, Großvenedigergruppe Nord, Großvenedigergruppe Alpenhauptkamm, Glocknergruppe Alpenhauptkamm, Goldberggruppe Alpenhauptkamm, Glocknergruppe Nord, Goldberggruppe Nord, Ankogelgruppe, Muhr, Loferer und Leoganger Steinberge



on extremely steep grass-covered slopes, still few releases but they can grow large, below 2400m



cold reserves used up by end of morning, heed thoroughly wet snowpack, below 2400 m

Top springtime conditions, daytime cycle below 2400 m

Avalanche danger in the morning is **LOW at all altitudes**, then **increases due to loss of snowpack firmness below 2400 m in extended south-facing slopes to MODERATE**.

On sun-drenched steep slopes (SE/S/SW) starting at midday, naturally triggered or skier-triggered small-to-medium wet loose-snow avalanches are possible, mostly in extremely steep terrain. Isolated, seldom glide-snow avalanches (medium-to-isolated-large sized) in very steep grass-covered terrain are possible at any time of day or night, though the likelihood is greatest in afternoon and in evening. Heed glide cracks.

Snowpack structure

The snowpack is capable of bearing loads to start with. In some places hard as steel and icy. During the day the snow slowly softens up. On sunny slopes the uppermost 10 cm become soft, on west-facing and north-facing slopes the snow remain hard for longer. On the weekend an increase in glide-snow avalanche activity was observed in extremely steep terrain.

Weather

Following a night of clear skies, cloudless and sunny skies on Wednesday. Very low air moisture, lighter winds than yesterday. At 2000 m: +5 degrees. On Thursday, brilliant sunshine, light winds, slightly moister air, unchanged springtime temperatures.

Outlook

On Thursday, slightly greater cycle of daytime danger, wet-snow / glide-snow avalanches, due to higher air moisture.

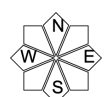
Avalanche problems



Danger ratings



Expositions



23.03.2022, morning

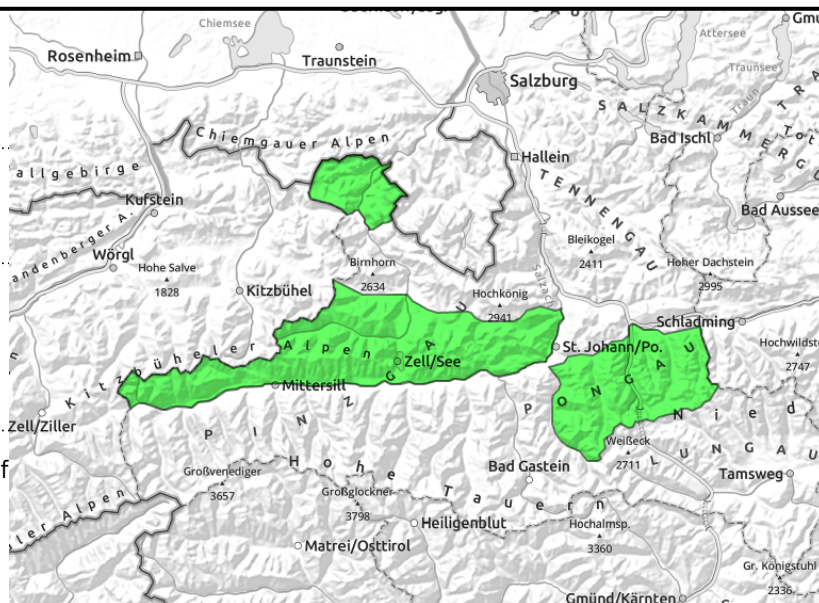
Chiemgauer Alpen, Heutal, Reiteralpe, Kitzbüheler Alpen, Glemmtal, Oberpinzgauer Grasberge, Dientner Grasberge, Niedere Tauern Nord, Niedere Tauern Alpenhauptkamm



on extremely steep grass-covered slopes, still few releases, but then medium-to-large



cold reserves used up by end of morning, heed steep sun-drenched slopes



Top springtime conditions, daytime cycle: danger rises to MODERATE

Avalanche danger in the morning is LOW, then **rises due to daytime loss of snowpack firmness to MODERATE**. On sun-drenched steep slopes, naturally triggered or skier-induced small-to-moderate wet loose snow avalanches are possible.

Isolated, seldom glide snow avalanches (small-to-medium) are possible at any time of day or night in very steep grass-covered terrain, though the likelihood is greatest in afternoon and evening. Heed glide cracks.

Snowpack structure

The snowpack is capable of bearing loads to start with. Often hard-as-steel and icy. During the course of the day it softens slowly. On sunny slopes the uppermost 10 cm become soft, on west-facing and north-facing slopes they remain hard for longer. Glide-snow activity on extremely steep slopes tends to increase through the course of the day.

Weather

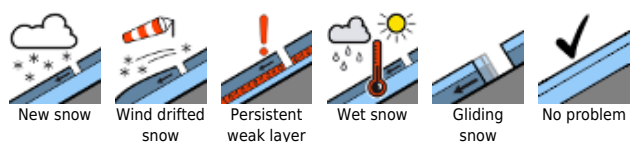
Following a night of clear skies, cloudless and sunny skies on Wednesday. Very low air moisture, lighter winds than yesterday. At 2000 m: +5 degrees.

On Thursday, brilliant sunshine, light winds, slightly moister air, unchanged springtime temperatures.

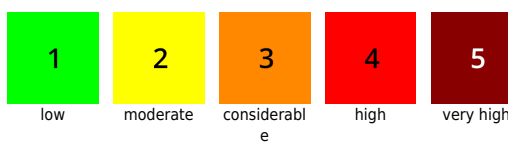
Outlook

On Thursday, slightly greater cycle of daytime danger, wet-snow / glide-snow avalanches, due to higher air moisture.

Avalanche problems



Danger ratings

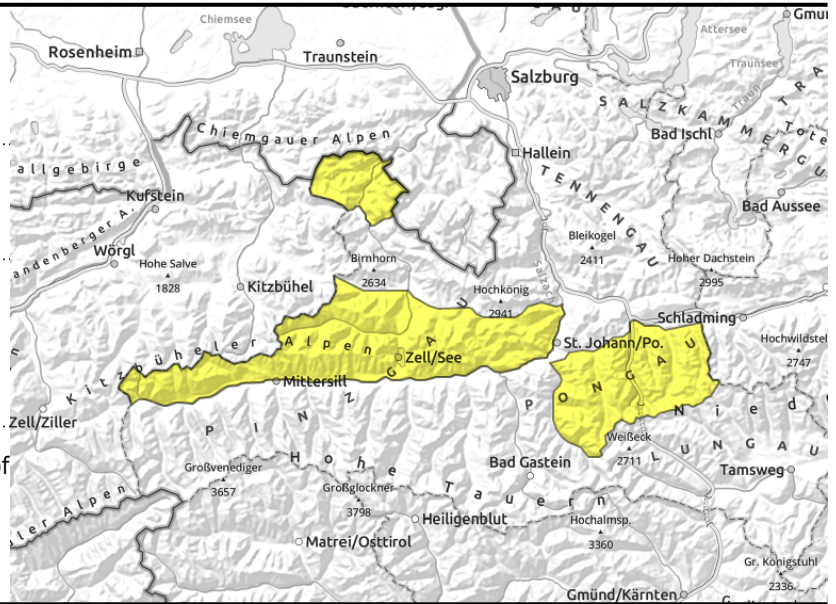


Expositions



23.03.2022, afternoon

Chiemgauer Alpen, Heutal, Reiteralpe, Kitzbüheler Alpen, Glemmtal, Oberpinzgauer Grasberge, Dientner Grasberge, Niedere Tauern Nord, Niedere Tauern Alpenhauptkamm



on extremely steep grass-covered slopes, still few releases, but then medium-to-large



cold reserves used up by end of morning, heed steep sun-drenched slopes

Top springtime conditions, daytime cycle: danger rises to MODERATE

Avalanche danger in the morning is LOW, then **rises due to daytime loss of snowpack firmness to MODERATE**. On sun-drenched steep slopes, naturally triggered or skier-induced small-to-moderate wet loose snow avalanches are possible.

Isolated, seldom glide snow avalanches (small-to-medium) are possible at any time of day or night in very steep grass-covered terrain, though the likelihood is greatest in afternoon and evening. Heed glide cracks.

Snowpack structure

The snowpack is capable of bearing loads to start with. Often hard-as-steel and icy. During the course of the day it softens slowly. On sunny slopes the uppermost 10 cm become soft, on west-facing and north-facing slopes they remain hard for longer. Glide-snow activity on extremely steep slopes tends to increase through the course of the day.

Weather

Following a night of clear skies, cloudless and sunny skies on Wednesday. Very low air moisture, lighter winds than yesterday. At 2000 m: +5 degrees.

On Thursday, brilliant sunshine, light winds, slightly moister air, unchanged springtime temperatures.

Outlook

On Thursday, slightly greater cycle of daytime danger, wet-snow / glide-snow avalanches, due to higher air moisture.

Translated by Jeffrey McCabe, www.creativtrans.com

Avalanche problems



New snow



Wind drifted snow



Persistent weak layer



Wet snow



Gliding snow



No problem

Danger ratings



1

low



2

moderate



3

considerable



4

high



5

very high

Expositions

