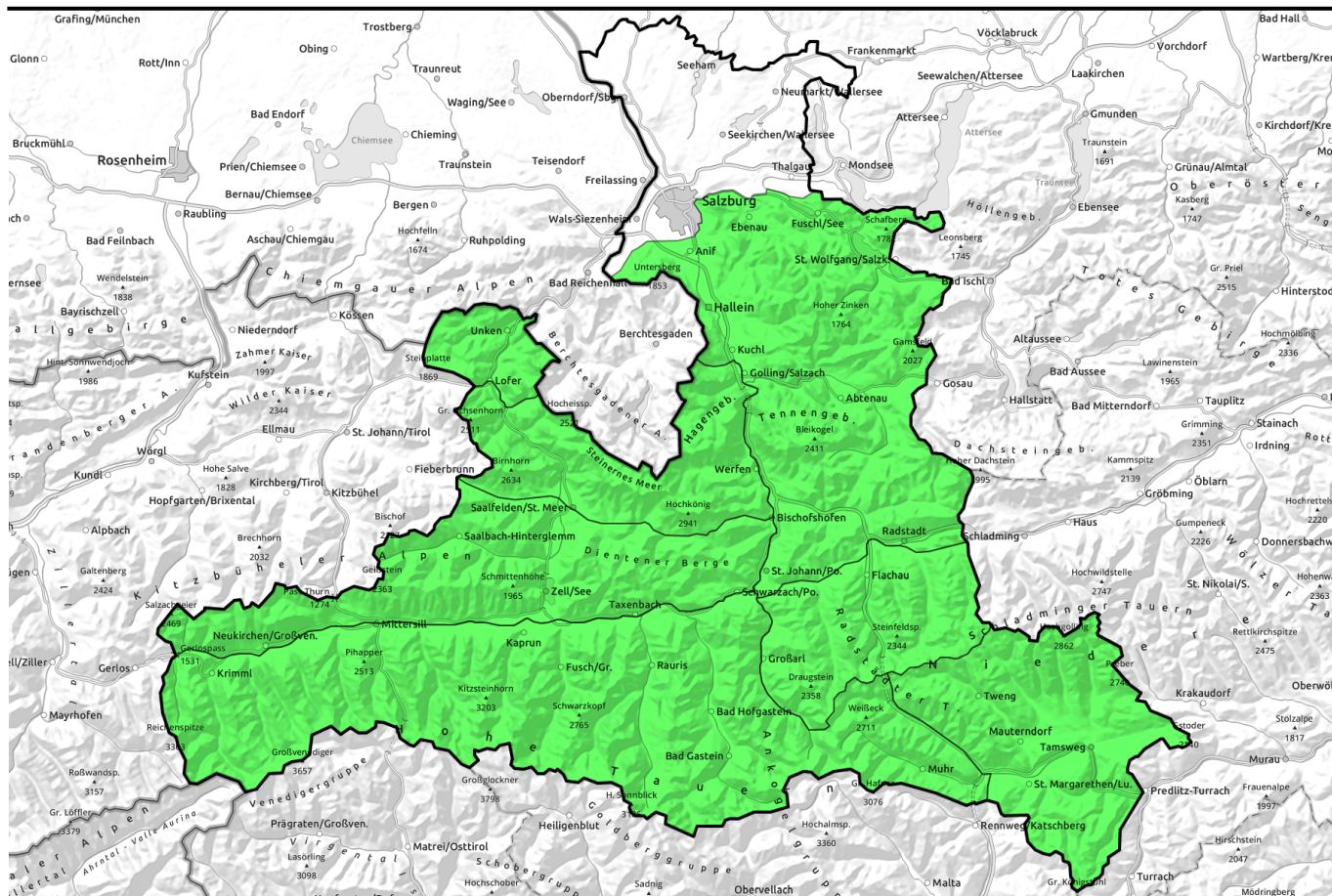


# 22.03.2022, morning



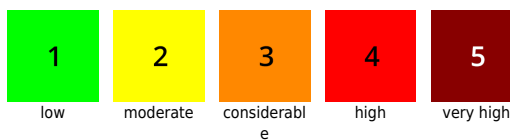
## Classic springtime conditions, daytime cycle in some places to MODERATE danger, main problem: gliding snow

	<p>Osterhorngruppe, Gamsfeldgruppe, Untersbergstock, Tennengebirge, Gosaukamm, Pongauer Grasberge, Niedere Tauern Süd, Nockberge</p>	
	<p>Steinernes Meer, Hochkönig, Hagengebirge, Göllstock, Großvenedigergruppe Nord, Großvenedigergruppe Alpenhauptkamm, Glocknergruppe Alpenhauptkamm, Goldberggruppe Alpenhauptkamm, Glocknergruppe Nord, Goldberggruppe Nord, Ankogelgruppe, Muhr, Loferer und Leoganger Steinberge</p>	
	<p>Chiemgauer Alpen, Heutal, Reiteralpe, Kitzbüheler Alpen, Glemmtal, Oberpinzgauer Grasberge, Dientner Grasberge, Niedere Tauern Nord, Niedere Tauern Alpenhauptkamm</p>	

### Avalanche problems



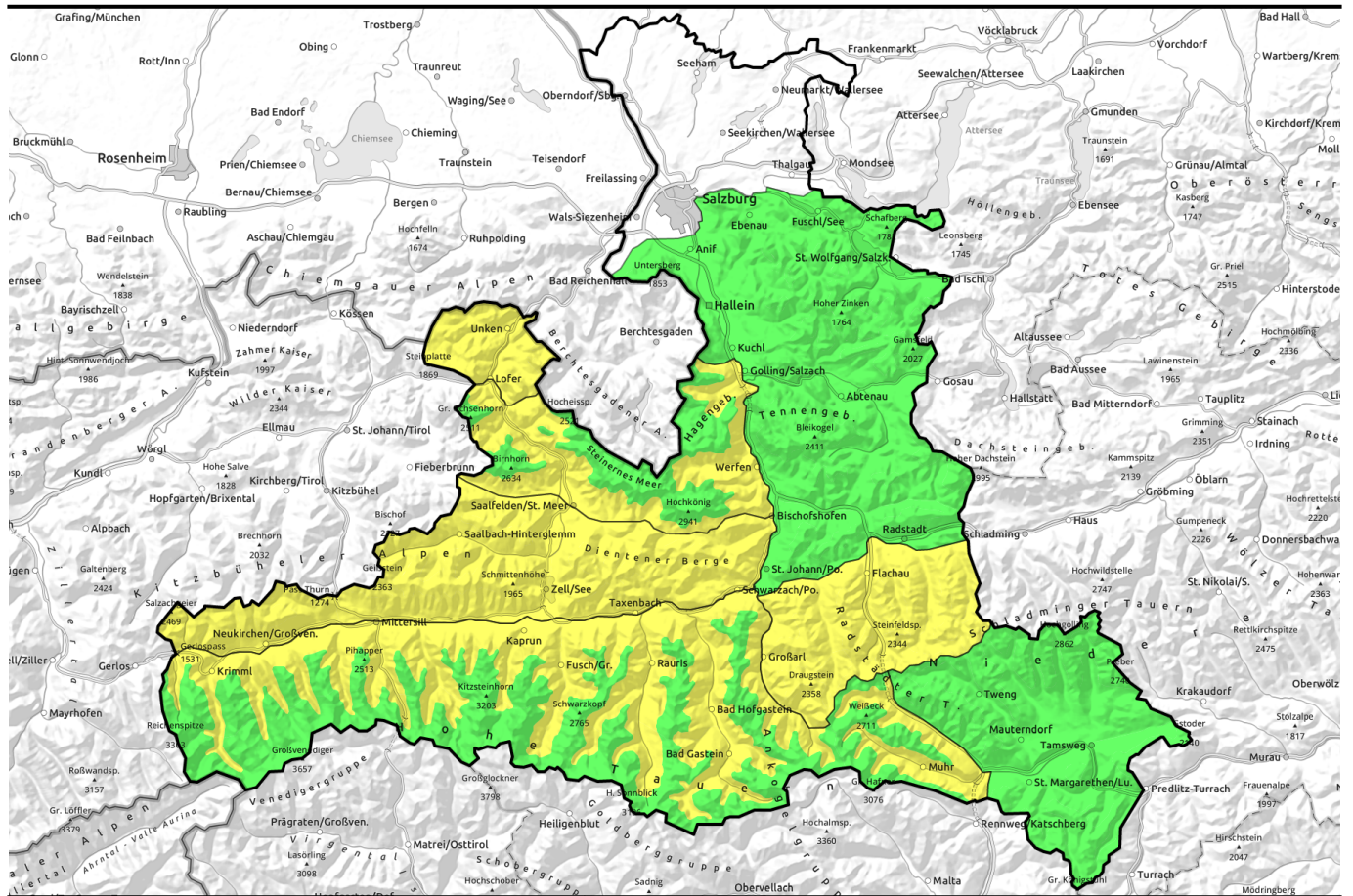
### Danger ratings



### Expositions



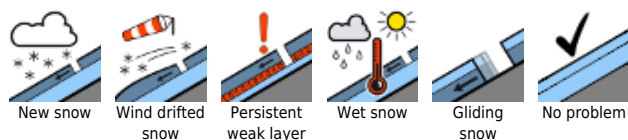
# 22.03.2022, afternoon



## Klassische Frühlingsverhältnisse, teilweise Tagesgang auf MÄßIG, Gleitschnee ist Hauptproblem

	Osterhorngruppe, Gamsfeldgruppe, Untersbergstock, Tennengebirge, Gosaukamm, Pongauer Grasberge, Niedere Tauern Süd, Nockberge		
	Steinerne Meer, Hochkönig, Hagengebirge, Göllstock, Großvenedigergruppe Nord, Großvenedigergruppe Alpenhauptkamm, Glocknergruppe Alpenhauptkamm, Goldberggruppe Alpenhauptkamm, Glocknergruppe Nord, Goldberggruppe Nord, Ankogelgruppe, Muhr, Loferer und Leoganger Steinberge		
	Chiemgauer Alpen, Heutal, Reiteralpe, Kitzbüheler Alpen, Glemmtal, Oberpinzgauer Grasberge, Dientner Grasberge, Niedere Tauern Nord, Niedere Tauern Alpenhauptkamm		

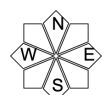
### Avalanche problems



### Danger ratings

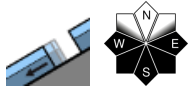


### Expositions

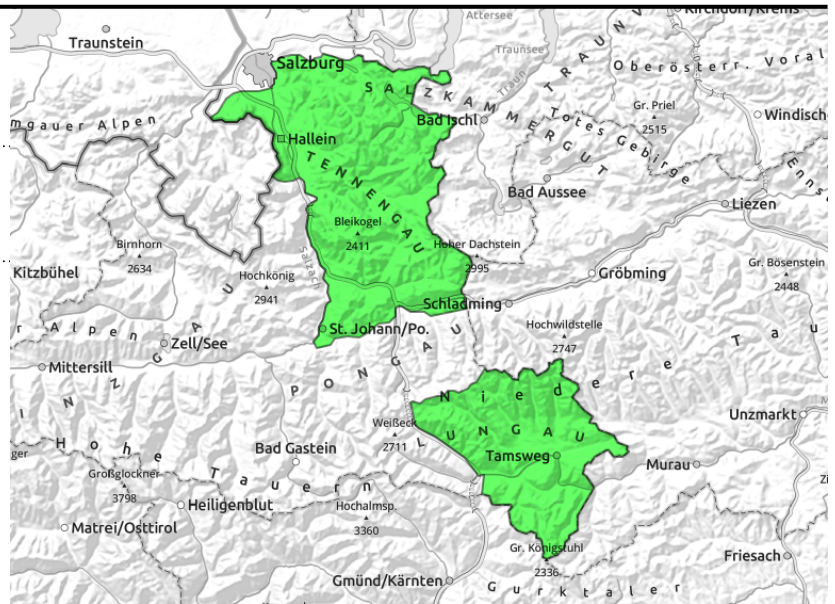


**22.03.2022**

**Osterhorngruppe, Gamsfeldgruppe,  
Untersbergstock, Tennengebirge, Gosaukamm,  
Pongauer Grasberge, Niedere Tauern Süd,  
Nockberge**



on extremely steep grass-covered slopes, still very few, small-to-medium



## Superb springtime conditions, only slight daytime cycle

Avalanche danger is initially LOW, then rises during the day yet stays in this danger level. Isolated, seldom glide snow avalanches (small-to-medium) are possible at any time of day or night in very steep grass-covered terrain, though the likelihood is greatest in afternoon and evening. Heed glide cracks.

### Snowpack structure

The snowpack is capable of bearing loads to start with, often hard-as-steel and icy. During the course of the day it softens slowly. On sunny slopes the uppermost 10 cm become soft, on west-facing and north-facing slopes it remains hard for longer. Glide-snow activity on extremely steep slopes tends to increase from day to day.

### Weather

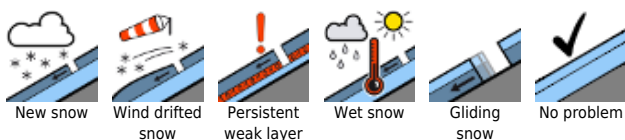
On Tuesday cloudless skies, very clear, low air moisture, southerly winds up to 30-40 km/hr in exposed zones. Unchanged temperatures.

No change on Wednesday, cloudless, little wind, low moisture. At 2000 m: 5 degrees.

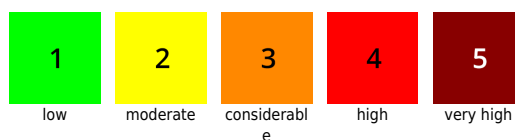
### Outlook

For the rest of the week, terrific springtime conditions, small avalanche risks. Starting on Wednesday and Thursday, increasing daytime cycle of danger with wet-snow problem in the warm afternoons.

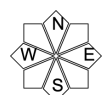
#### Avalanche problems



#### Danger ratings

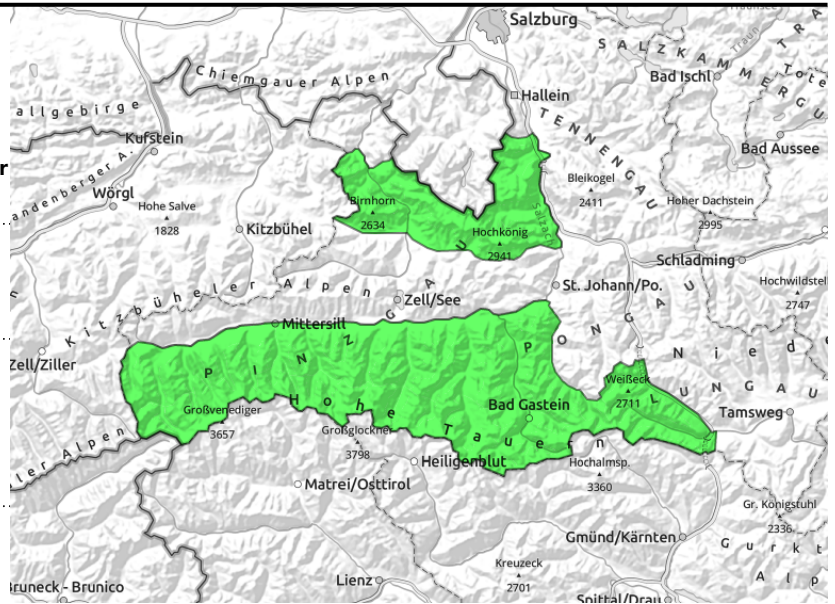


#### Expositions



# 22.03.2022, morning

Steinernes Meer, Hochkönig, Hagengebirge, Göllstock, Großvenedigergruppe Nord, Großvenedigergruppe Alpenhauptkamm, Glocknergruppe Alpenhauptkamm, Goldberggruppe Alpenhauptkamm, Glocknergruppe Nord, Goldberggruppe Nord, Ankogelgruppe, Muhr, Loferer und Leoganger Steinberge



on extremely steep grass-covered slopes, still few releases but they can grow large, below 2400m



late transformation to firm snow, afternoon on steep sun-drenched slopes, below 2400 m

## Top springtime conditions, daytime cycle below 2400 m

Avalanche danger in the morning is **LOW at all altitudes**, then **increases due to loss of snowpack firmness below 2400 m in extended south-facing slopes to MODERATE**.

On sun-drenched steep slopes (SE/S/SW) starting at midday, naturally triggered or skier-triggered small-to-medium wet loose-snow avalanches are possible, mostly in extremely steep terrain. Isolated, seldom glide-snow avalanches (medium-to-large sized) in very steep grass-covered terrain are possible at any time of day or night, though the likelihood is greatest in afternoon and in evening. Heed glide cracks.

### Snowpack structure

The snowpack is capable of bearing loads to start with. In some places hard as steel and icy. During the day the snow slowly softens up. On sunny slopes the uppermost 10 cm become soft, on west-facing and north-facing slopes the snow remain hard for longer. Recently an increase in glide-snow avalanche activity was observed in extremely steep terrain.

### Weather

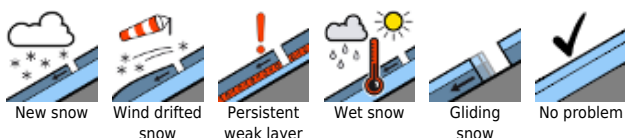
On Tuesday cloudless skies, very clear, low air moisture, southerly winds up to 30-40 km/hr in exposed zones. Unchanged temperatures.

No change on Wednesday, cloudless, little wind, low moisture. At 2000 m: 5 degrees, at 3000 m: -3 degrees.

### Outlook

For the rest of the week, terrific springtime conditions, small avalanche risks. Starting on Wednesday and Thursday, increasing daytime cycle of danger with wet-snow problem in the warm afternoons.

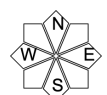
#### Avalanche problems



#### Danger ratings

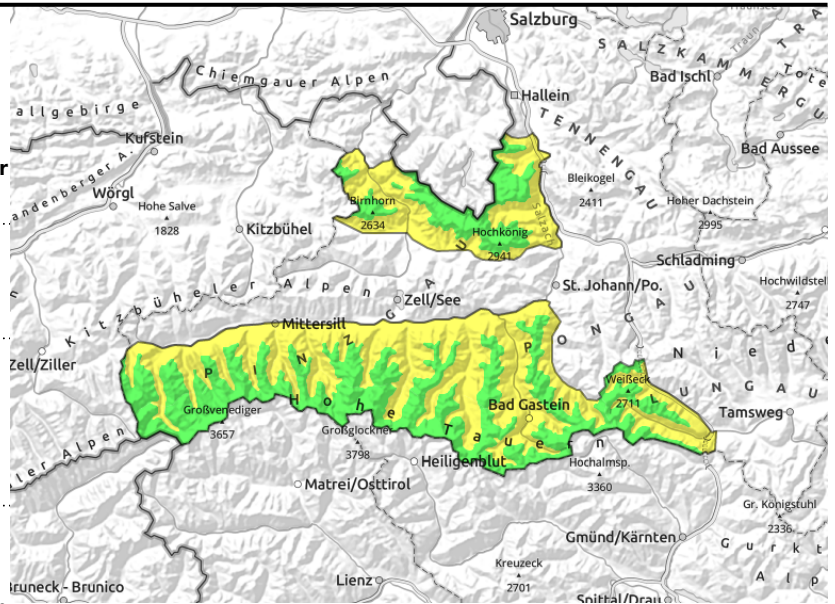


#### Expositions



# 22.03.2022, afternoon

Steinernes Meer, Hochkönig, Hagengebirge, Göllstock, Großvenedigergruppe Nord, Großvenedigergruppe Alpenhauptkamm, Glocknergruppe Alpenhauptkamm, Goldberggruppe Alpenhauptkamm, Glocknergruppe Nord, Goldberggruppe Nord, Ankogelgruppe, Muhr, Loferer und Leoganger Steinberge



on extremely steep grass-covered slopes, still few releases but they can grow large, below 2400m



late transformation to firm snow, afternoon on steep sun-drenched slopes, below 2400 m

## Top springtime conditions, daytime cycle below 2400 m

Avalanche danger in the morning is **LOW at all altitudes**, then **increases due to loss of snowpack firmness below 2400 m in extended south-facing slopes to MODERATE**.

On sun-drenched steep slopes (SE/S/SW) starting at midday, naturally triggered or skier-triggered small-to-medium wet loose-snow avalanches are possible, mostly in extremely steep terrain. Isolated, seldom glide-snow avalanches (medium-to-large sized) in very steep grass-covered terrain are possible at any time of day or night, though the likelihood is greatest in afternoon and in evening. Heed glide cracks.

### Snowpack structure

The snowpack is capable of bearing loads to start with. In some places hard as steel and icy. During the day the snow slowly softens up. On sunny slopes the uppermost 10 cm become soft, on west-facing and north-facing slopes the snow remain hard for longer. Recently an increase in glide-snow avalanche activity was observed in extremely steep terrain.

### Weather

On Tuesday cloudless skies, very clear, low air moisture, southerly winds up to 30-40 km/hr in exposed zones. Unchanged temperatures.

No change on Wednesday, cloudless, little wind, low moisture. At 2000 m: 5 degrees, at 3000 m: -3 degrees.

### Outlook

For the rest of the week, terrific springtime conditions, small avalanche risks. Starting on Wednesday and Thursday, increasing daytime cycle of danger with wet-snow problem in the warm afternoons.

#### Avalanche problems



#### Danger ratings

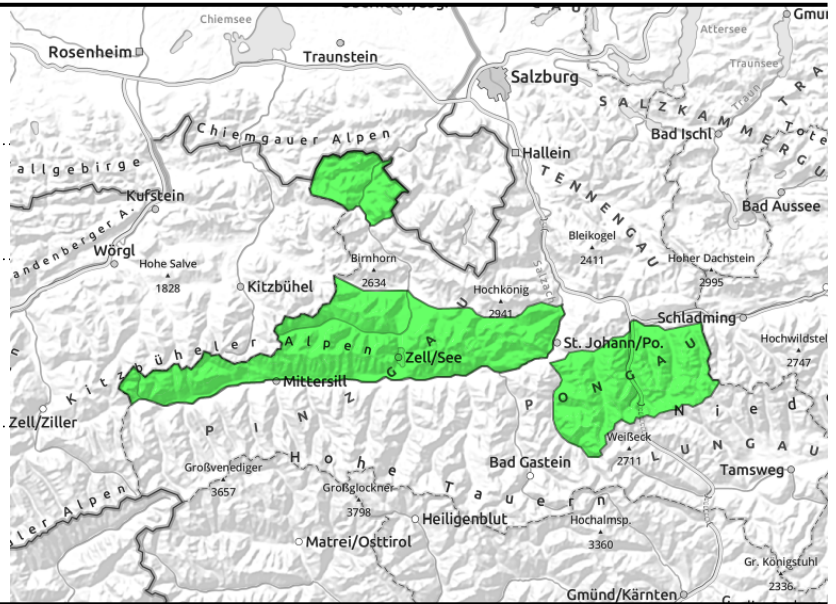


#### Expositions



# 22.03.2022, morning

**Chiemgauer Alpen, Heutal, Reiteralpe, Kitzbüheler Alpen, Glemmtal, Oberpinzgauer Grasberge, Dientner Grasberge, Niedere Tauern Nord, Niedere Tauern Alpenhauptkamm**



on extremely steep grass-covered slopes, still few releases, but then medium-to-large



late transformation to firn snow, caution on steep sun-drenched slopes in the afternoon

## Top springtime conditions, daytime cycle: danger rises to MODERATE

Avalanche danger in the morning is LOW, then **rises due to daytime loss of snowpack firmness to MODERATE**. On sun-drenched steep slopes, naturally triggered or skier-induced small-to-moderate wet loose snow avalanches are possible.

Isolated, seldom glide snow avalanches (small-to-medium) are possible at any time of day or night in very steep grass-covered terrain, though the likelihood is greatest in afternoon and evening. Heed glide cracks.

### Snowpack structure

The snowpack is capable of bearing loads to start with. Often hard-as-steel and icy. During the course of the day it softens slowly. On sunny slopes the uppermost 10 cm become soft, on west-facing and north-facing slopes they remain hard for longer. Glide-snow activity on extremely steep slopes has recently increased.

### Weather

On Tuesday cloudless skies, very clear, low air moisture, southerly winds up to 30-40 km/hr in exposed zones. Unchanged temperatures.

No change on Wednesday, cloudless, little wind, low moisture. At 2000 m: 5 degrees.

### Outlook

For the rest of the week, terrific springtime conditions, small avalanche risks. Starting on Wednesday and Thursday, increasing daytime cycle of danger with wet-snow problem in the warm afternoons.

#### Avalanche problems



New snow



Wind drifted snow



Persistent weak layer



Wet snow



Gliding snow



No problem

#### Danger ratings



1

low



2

moderate



3

considerable



4

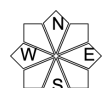
high



5

very high

#### Expositions



# 22.03.2022, afternoon

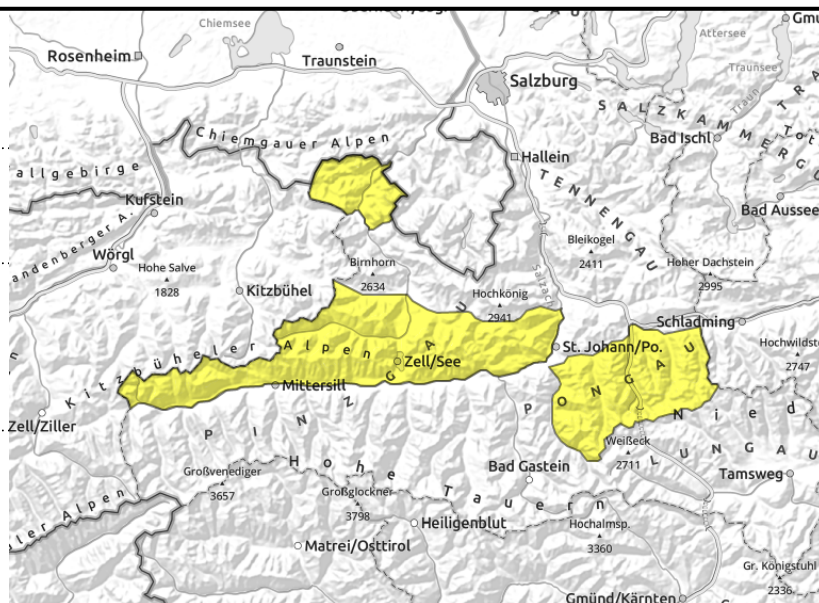
**Chiemgauer Alpen, Heutal, Reiteralpe, Kitzbüheler Alpen, Glemmtal, Oberpinzgauer Grasberge, Dientner Grasberge, Niedere Tauern Nord, Niedere Tauern Alpenhauptkamm**



on extremely steep grass-covered slopes, still few releases, but then medium-to-large



late transformation to firm snow, caution on steep sun-drenched slopes in the afternoon



## Top springtime conditions, daytime cycle: danger rises to MODERATE

Avalanche danger in the morning is LOW, then **rises due to daytime loss of snowpack firmness to MODERATE**. On sun-drenched steep slopes, naturally triggered or skier-induced small-to-moderate wet loose snow avalanches are possible.

Isolated, seldom glide snow avalanches (small-to-medium) are possible at any time of day or night in very steep grass-covered terrain, though the likelihood is greatest in afternoon and evening. Heed glide cracks.

### Snowpack structure

The snowpack is capable of bearing loads to start with. Often hard-as-steel and icy. During the course of the day it softens slowly. On sunny slopes the uppermost 10 cm become soft, on west-facing and north-facing slopes they remain hard for longer. Glide-snow activity on extremely steep slopes has recently increased.

### Weather

On Tuesday cloudless skies, very clear, low air moisture, southerly winds up to 30-40 km/hr in exposed zones. Unchanged temperatures.

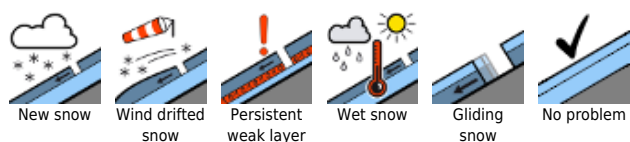
No change on Wednesday, cloudless, little wind, low moisture. At 2000 m: 5 degrees.

### Outlook

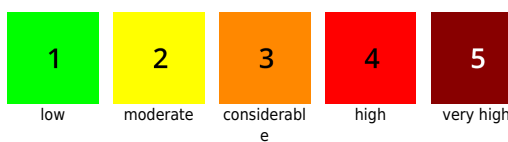
For the rest of the week, terrific springtime conditions, small avalanche risks. Starting on Wednesday and Thursday, increasing daytime cycle of danger with wet-snow problem in the warm afternoons.

Translated by Jeffrey McCabe, [www.creativtrans.com](http://www.creativtrans.com)

#### Avalanche problems



#### Danger ratings



#### Expositions

