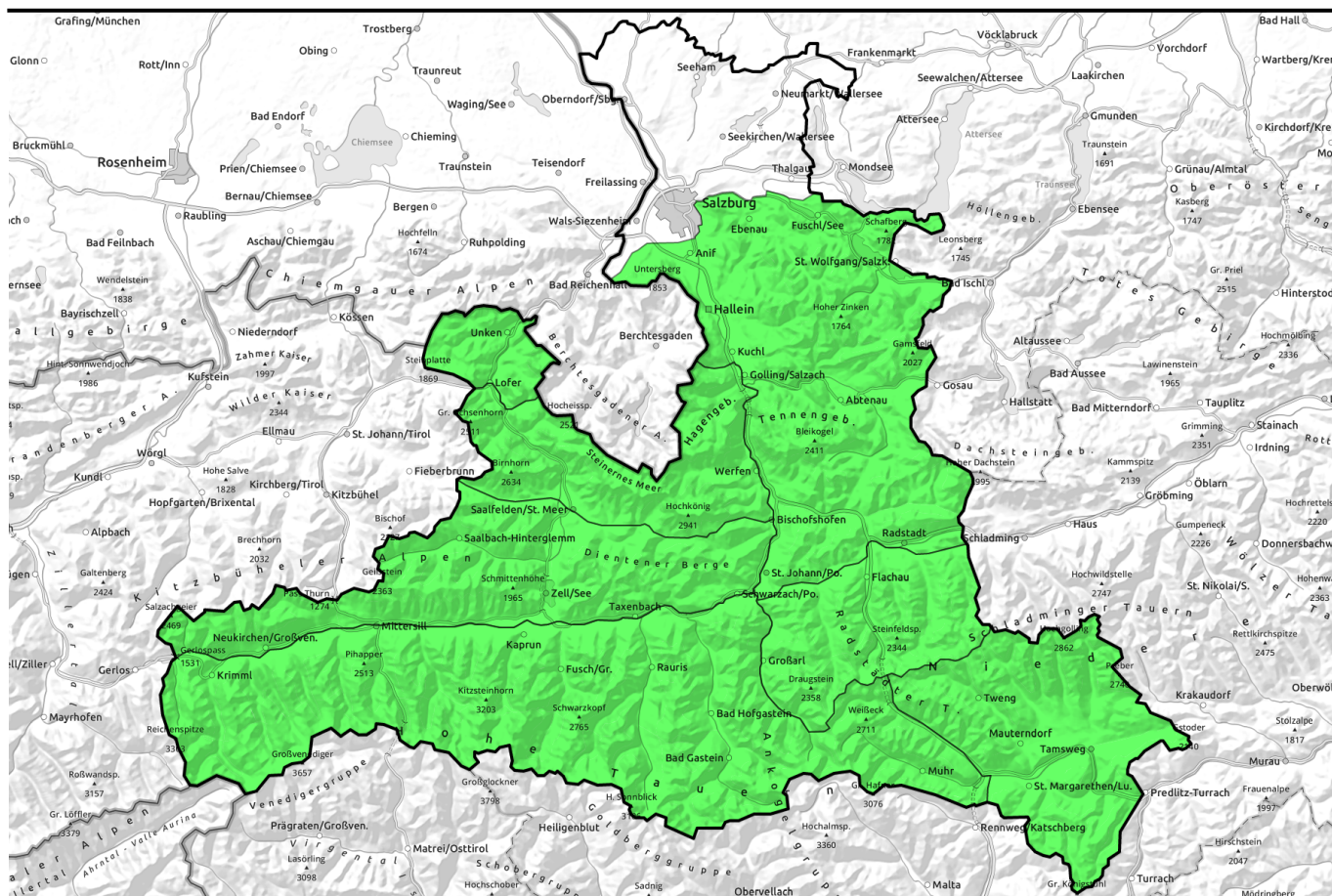


21.03.2022, morning



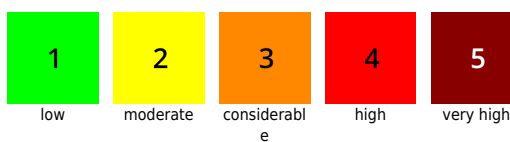
Classic springtime conditions, daytime cycle in some places with MODERATE danger from the northeast

- Osterhorngruppe, Gamsfeldgruppe, Untersbergstock, Tennengebirge, Gosaukamm, Pongauer Grasberge, Niedere Tauern Süd, Nockberge
- Steinernes Meer, Hochkönig, Hagengebirge, Göllstock, Großvenedigergruppe Nord, Großvenedigergruppe Alpenhauptkamm, Glocknergruppe Alpenhauptkamm, Goldberggruppe Alpenhauptkamm, Glocknergruppe Nord, Goldberggruppe Nord, Ankogelgruppe, Muhr, Loferer und Leoganger Steinberge
- Chiemgauer Alpen, Heutal, Reiteralpe, Kitzbüheler Alpen, Glemmtal, Oberpinzgauer Grasberge, Dientner Grasberge, Niedere Tauern Nord, Niedere Tauern Alpenhauptkamm

Avalanche problems



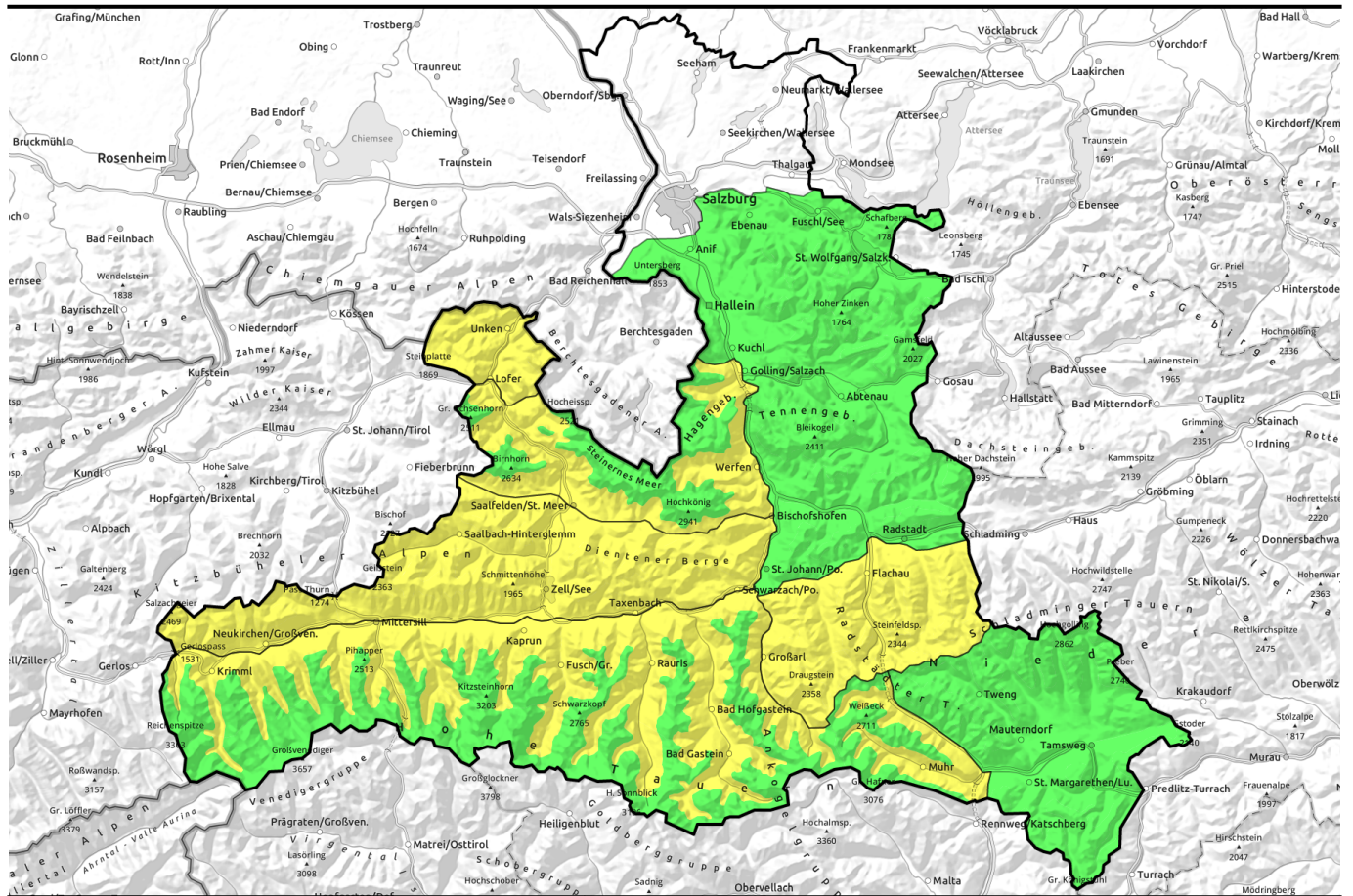
Danger ratings



Expositions



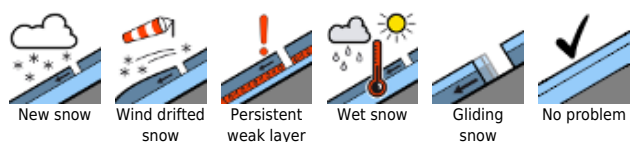
21.03.2022, afternoon



Klassische Frühlingsverhältnisse, teilweise Tagesgang auf MÄßIG, trockene Luft aus NO

	Osterhorngruppe, Gamsfeldgruppe, Untersbergstock, Tennengebirge, Gosaukamm, Pongauer Grasberge, Niedere Tauern Süd, Nockberge	
	Steinerne Meer, Hochkönig, Hagengebirge, Göllstock, Großvenedigergruppe Nord, Großvenedigergruppe Alpenhauptkamm, Glocknergruppe Alpenhauptkamm, Goldberggruppe Alpenhauptkamm, Glocknergruppe Nord, Goldberggruppe Nord, Ankogelgruppe, Muhr, Loferer und Leoganger Steinberge	
	Chiemgauer Alpen, Heutal, Reiteralpe, Kitzbüheler Alpen, Glemmtal, Oberpinzgauer Grasberge, Dientner Grasberge, Niedere Tauern Nord, Niedere Tauern Alpenhauptkamm	

Avalanche problems



Danger ratings



Expositions

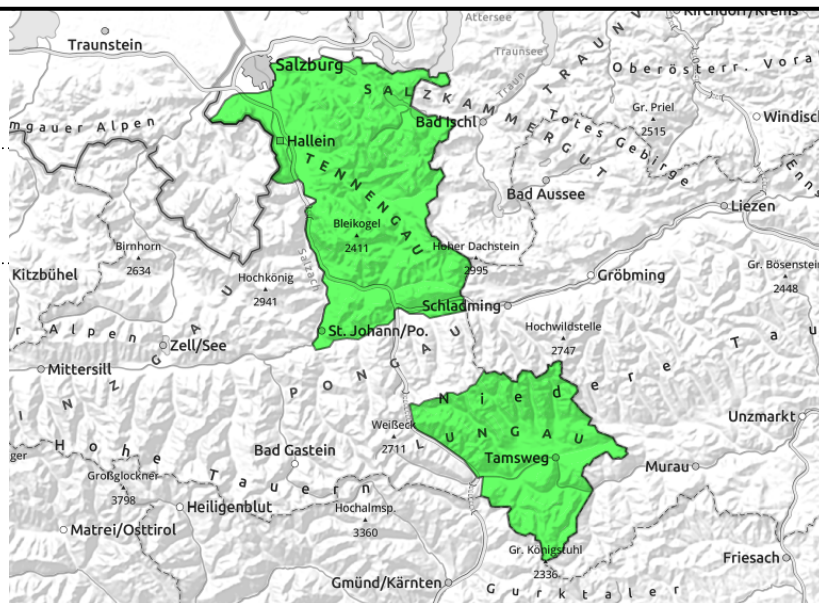


21.03.2022

**Osterhorngruppe, Gamsfeldgruppe,
Untersbergstock, Tennengebirge, Gosaukamm,
Pongauer Grasberge, Niedere Tauern Süd,
Nockberge**



on extremely steep grass-covered slopes, still very few, small-to-medium



Superb springtime conditions, only slight daytime cycle

Avalanche danger is initially LOW, then rises during the day yet stays within this danger level. Isolated, seldom glide snow avalanches (small-to-medium) are possible at any time of day or night in very steep grass-covered terrain, though the likelihood is greatest in afternoon and evening. Heed glide cracks.

Snowpack structure

The snowpack is capable of bearing loads to start with. Often hard-as-steel and icy. During the course of the day it softens slowly. On sunny slopes the uppermost 10 cm become soft, on west-facing and north-facing slopes they remain hard for longer. Glide-snow activity on extremely steep slopes tends to increase through the course of each day.

Weather

Cloudless skies, outstanding visibility on Monday. Air moisture extremely low, mostly 20%. Light winds, apart from local swooping winds. At 2000 m: rising from -4 to +1 degrees.

On Tuesday, still cloudless skies, clear air, low moisture. Southerly winds rising, reaching 30-50 km/hr in exposed terrain. Temperatures unchanged.

Outlook

On Tuesday, unchanged conditions. Top springtime conditions, only a minor glide-snow risk, and the dry air will transform the snow to firn rather late, where the sun doesn't shine directly, and the snowpack will remain steel-hard. Starting on Wednesday, increasingly strong daytime cycle, with wet-snow problem in the afternoon.

Avalanche problems



New snow



Wind drifted snow



Persistent weak layer



Wet snow



Gliding snow



No problem

Danger ratings



1

low



2

moderate



3

considerable



4

high



5

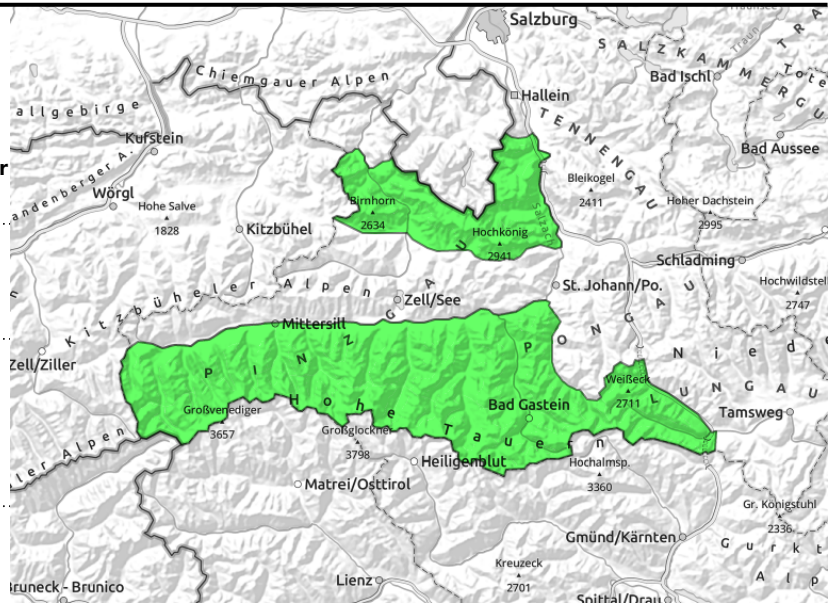
very high

Expositions



21.03.2022, morning

Steinernes Meer, Hochkönig, Hagengebirge, Göllstock, Großvenedigergruppe Nord, Großvenedigergruppe Alpenhauptkamm, Glocknergruppe Alpenhauptkamm, Goldberggruppe Alpenhauptkamm, Glocknergruppe Nord, Goldberggruppe Nord, Ankogelgruppe, Muhr, Loferer und Leoganger Steinberge



on extremely steep grass-covered slopes, still few releases but they can grow large, below 2400m



late transformation to firm snow, afternoon on steep sun-drenched slopes, below 2400 m

Top springtime conditions, daytime cycle below 2400 m

Avalanche danger in the morning is LOW at all altitudes, then increases due to loss of snowpack firmness below 2400 m in extended south-facing slopes to MODERATE.

On sun-drenched steep slopes (SE/S/SW) starting at midday, naturally triggered or skier-triggered small-to-medium wet loose-snow avalanches are possible, mostly in extremely steep terrain.

Isolated, seldom glide-snow avalanches (medium-to-large sized) in very steep grass-covered terrain are possible at any time of day or night, though the likelihood is greatest in afternoon and in evening. Heed glide cracks.

Snowpack structure

The snowpack is capable of bearing loads to start with. In some places hard as steel and icy. During the day the snow slowly softens up. On sunny slopes the uppermost 10 cm become soft, on west-facing and north-facing slopes the snow remain hard for longer. On the weekend an increase in glide-snow avalanche activity was observed in extremely steep terrain.

Weather

Cloudless skies, outstanding visibility on Monday. Air moisture extremely low, mostly 20%. Light winds, apart from local swooping winds. At 2000 m: rising from -4 to +1 degrees.

On Tuesday, still cloudless skies, clear air, low moisture. Southerly winds rising, reaching 30-50 km/hr in exposed terrain. Temperatures unchanged.

Outlook

On Tuesday, unchanged conditions. Top springtime conditions, only a minor glide-snow risk, and the dry air will transform the snow to firm rather late, where the sun doesn't shine directly, and the snowpack will remain steel-hard. Starting on Wednesday, increasingly strong daytime cycle, with wet-snow problem in the afternoon.

Avalanche problems



New snow



Wind drifted snow



Persistent weak layer



Wet snow



Gliding snow



No problem

Danger ratings



1

low



2

moderate



3

considerable



4

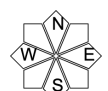
high



5

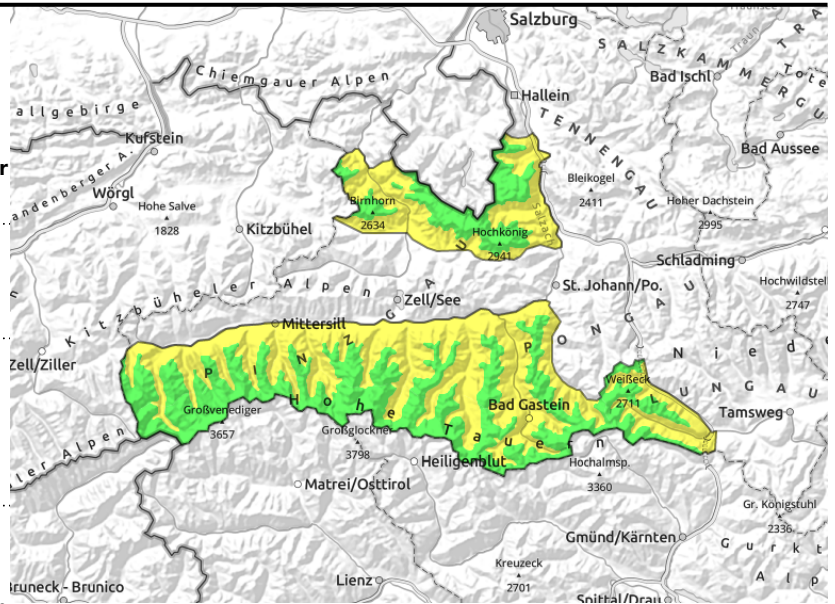
very high

Expositions



21.03.2022, afternoon

Steinernes Meer, Hochkönig, Hagengebirge, Göllstock, Großvenedigergruppe Nord, Großvenedigergruppe Alpenhauptkamm, Glocknergruppe Alpenhauptkamm, Goldberggruppe Alpenhauptkamm, Glocknergruppe Nord, Goldberggruppe Nord, Ankogelgruppe, Muhr, Loferer und Leoganger Steinberge



on extremely steep grass-covered slopes, still few releases but they can grow large, below 2400m



late transformation to firm snow, afternoon on steep sun-drenched slopes, below 2400 m

Top springtime conditions, daytime cycle below 2400 m

Avalanche danger in the morning is LOW at all altitudes, then increases due to loss of snowpack firmness below 2400 m in extended south-facing slopes to MODERATE.

On sun-drenched steep slopes (SE/S/SW) starting at midday, naturally triggered or skier-triggered small-to-medium wet loose-snow avalanches are possible, mostly in extremely steep terrain.

Isolated, seldom glide-snow avalanches (medium-to-large sized) in very steep grass-covered terrain are possible at any time of day or night, though the likelihood is greatest in afternoon and in evening. Heed glide cracks.

Snowpack structure

The snowpack is capable of bearing loads to start with. In some places hard as steel and icy. During the day the snow slowly softens up. On sunny slopes the uppermost 10 cm become soft, on west-facing and north-facing slopes the snow remain hard for longer. On the weekend an increase in glide-snow avalanche activity was observed in extremely steep terrain.

Weather

Cloudless skies, outstanding visibility on Monday. Air moisture extremely low, mostly 20%. Light winds, apart from local swooping winds. At 2000 m: rising from -4 to +1 degrees.

On Tuesday, still cloudless skies, clear air, low moisture. Southerly winds rising, reaching 30-50 km/hr in exposed terrain. Temperatures unchanged.

Outlook

On Tuesday, unchanged conditions. Top springtime conditions, only a minor glide-snow risk, and the dry air will transform the snow to firm rather late, where the sun doesn't shine directly, and the snowpack will remain steel-hard. Starting on Wednesday, increasingly strong daytime cycle, with wet-snow problem in the afternoon.

Avalanche problems



Danger ratings

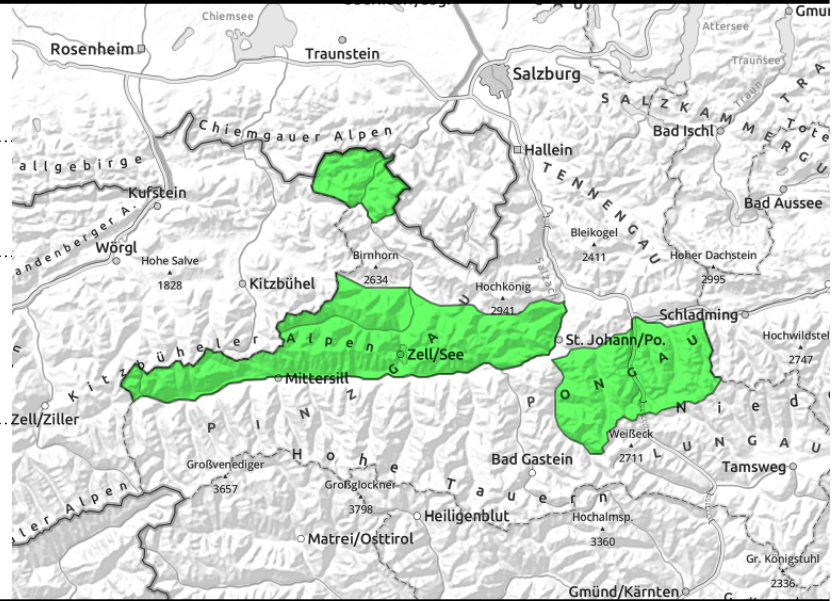


Expositions



21.03.2022, morning

Chiemgauer Alpen, Heutal, Reiteralpe, Kitzbüheler Alpen, Glemmtal, Oberpinzgauer Grasberge, Dientner Grasberge, Niedere Tauern Nord, Niedere Tauern Alpenhauptkamm



on extremely steep grass-covered slopes, still few releases, but then medium-to-large



late transformation to firm snow, caution on steep sun-drenched slopes in the afternoon

Top springtime conditions, daytime cycle: danger rises to MODERATE

Avalanche danger in the morning is LOW, then rises due to daytime loss of snowpack firmness to MODERATE. On sun-drenched steep slopes, naturally triggered or skier-induced small-to-moderate wet loose snow avalanches are possible.

Isolated, seldom glide snow avalanches (small-to-medium) are possible at any time of day or night in very steep grass-covered terrain, though the likelihood is greatest in afternoon and evening. Heed glide cracks.

Snowpack structure

The snowpack is capable of bearing loads to start with. Often hard-as-steel and icy. During the course of the day it softens slowly. On sunny slopes the uppermost 10 cm become soft, on west-facing and north-facing slopes they remain hard for longer. Glide-snow activity on extremely steep slopes tends to increase through the course of the day.

Weather

Cloudless skies, outstanding visibility on Monday. Air moisture extremely low, mostly 20%. Light winds, apart from local swooping winds. At 2000 m: rising from -4 to +1 degrees.

On Tuesday, ongoingly cloudless skies, clear air, low moisture. Southerly winds rising, reaching 30-50 km/hr in exposed terrain. Temperatures unchanged.

Outlook

On Tuesday, unchanged conditions. Top springtime conditions, only a minor glide-snow risk, and the dry air will transform the snow to firm rather late, where the sun doesn't shine directly, and the snowpack will remain steel-hard. Starting on Wednesday, increasingly strong daytime cycle, with wet-snow problem in the afternoon.

Avalanche problems



New snow



Wind drifted snow



Persistent weak layer



Wet snow



Gliding snow



No problem

Danger ratings



1

low



2

moderate



3

considerabl

e



4

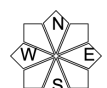
high



5

very high

Expositions



21.03.2022, afternoon

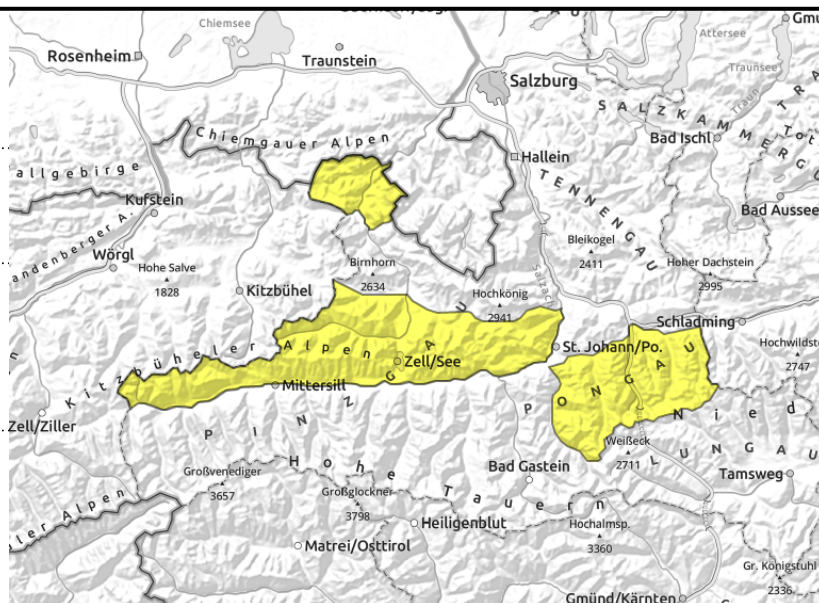
Chiemgauer Alpen, Heutal, Reiteralpe, Kitzbüheler Alpen, Glemmtal, Oberpinzgauer Grasberge, Dientner Grasberge, Niedere Tauern Nord, Niedere Tauern Alpenhauptkamm



on extremely steep grass-covered slopes, still few releases, but then medium-to-large



late transformation to firm snow, caution on steep sun-drenched slopes in the afternoon



Top springtime conditions, daytime cycle: danger rises to MODERATE

Avalanche danger in the morning is LOW, then rises due to daytime loss of snowpack firmness to MODERATE. On sun-drenched steep slopes, naturally triggered or skier-induced small-to-moderate wet loose snow avalanches are possible.

Isolated, seldom glide snow avalanches (small-to-medium) are possible at any time of day or night in very steep grass-covered terrain, though the likelihood is greatest in afternoon and evening. Heed glide cracks.

Snowpack structure

The snowpack is capable of bearing loads to start with. Often hard-as-steel and icy. During the course of the day it softens slowly. On sunny slopes the uppermost 10 cm become soft, on west-facing and north-facing slopes they remain hard for longer. Glide-snow activity on extremely steep slopes tends to increase through the course of the day.

Weather

Cloudless skies, outstanding visibility on Monday. Air moisture extremely low, mostly 20%. Light winds, apart from local swooping winds. At 2000 m: rising from -4 to +1 degrees.

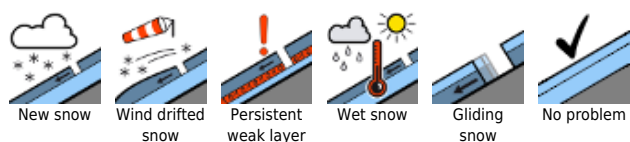
On Tuesday, ongoingly cloudless skies, clear air, low moisture. Southerly winds rising, reaching 30-50 km/hr in exposed terrain. Temperatures unchanged.

Outlook

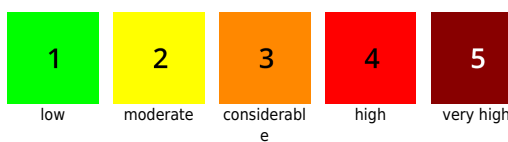
On Tuesday, unchanged conditions. Top springtime conditions, only a minor glide-snow risk, and the dry air will transform the snow to firm rather late, where the sun doesn't shine directly, and the snowpack will remain steel-hard. Starting on Wednesday, increasingly strong daytime cycle, with wet-snow problem in the afternoon.

Translated by Jeffrey McCabe, www.creativtrans.com

Avalanche problems



Danger ratings



Expositions

