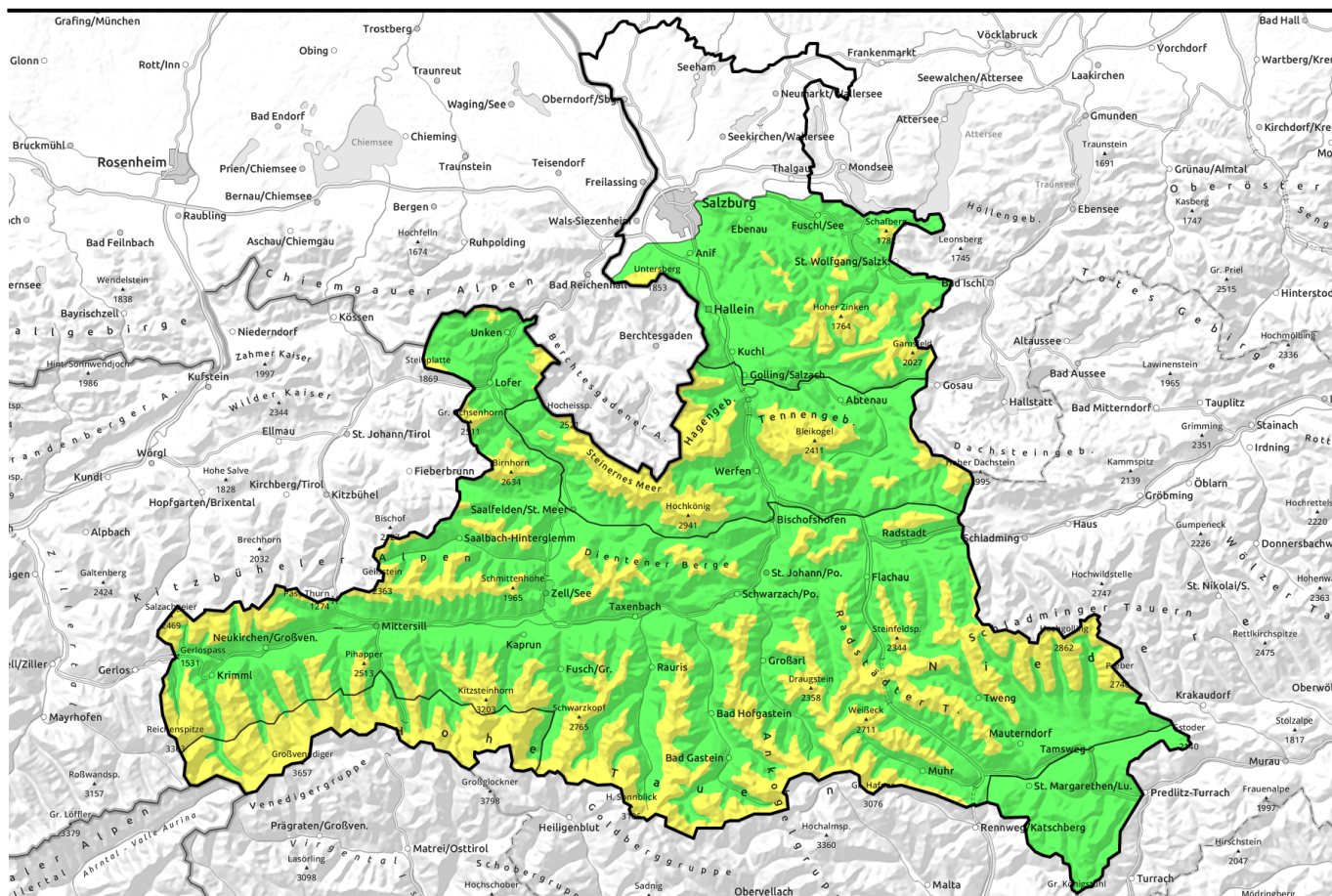


18.03.2022, morning



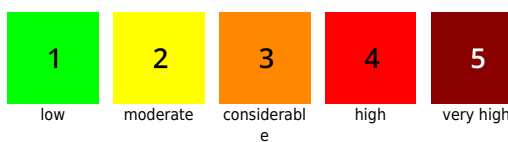
Reduced nocturnal outgoing radiation, intermittently sunny during the day

	2000 m	Steinernes Meer, Hochkönig, Hagengebirge, Göllstock, Tennengebirge, Gosaukamm	
	2500 m	Osterhorngruppe, Gamsfeldgruppe, Untersbergstock, Chiemgauer Alpen, Heutal, Reiteralpe, Loferer und Leoganger Steinberge, Kitzbüheler Alpen, Gemtal, Oberpinzgauer Grasberge, Großvenedigergruppe Nord, Glocknergruppe Nord, Niedere Tauern Süd, Ankogelgruppe, Muhr, Goldberggruppe Nord, Dientner Grasberge, Pongauer Grasberge, Niedere Tauern Nord, Niedere Tauern Alpenhauptkamm, Goldberggruppe Alpenhauptkamm	
	2500 m	Großvenedigergruppe Alpenhauptkamm, Glocknergruppe Alpenhauptkamm	
		Nockberge	

Avalanche problems



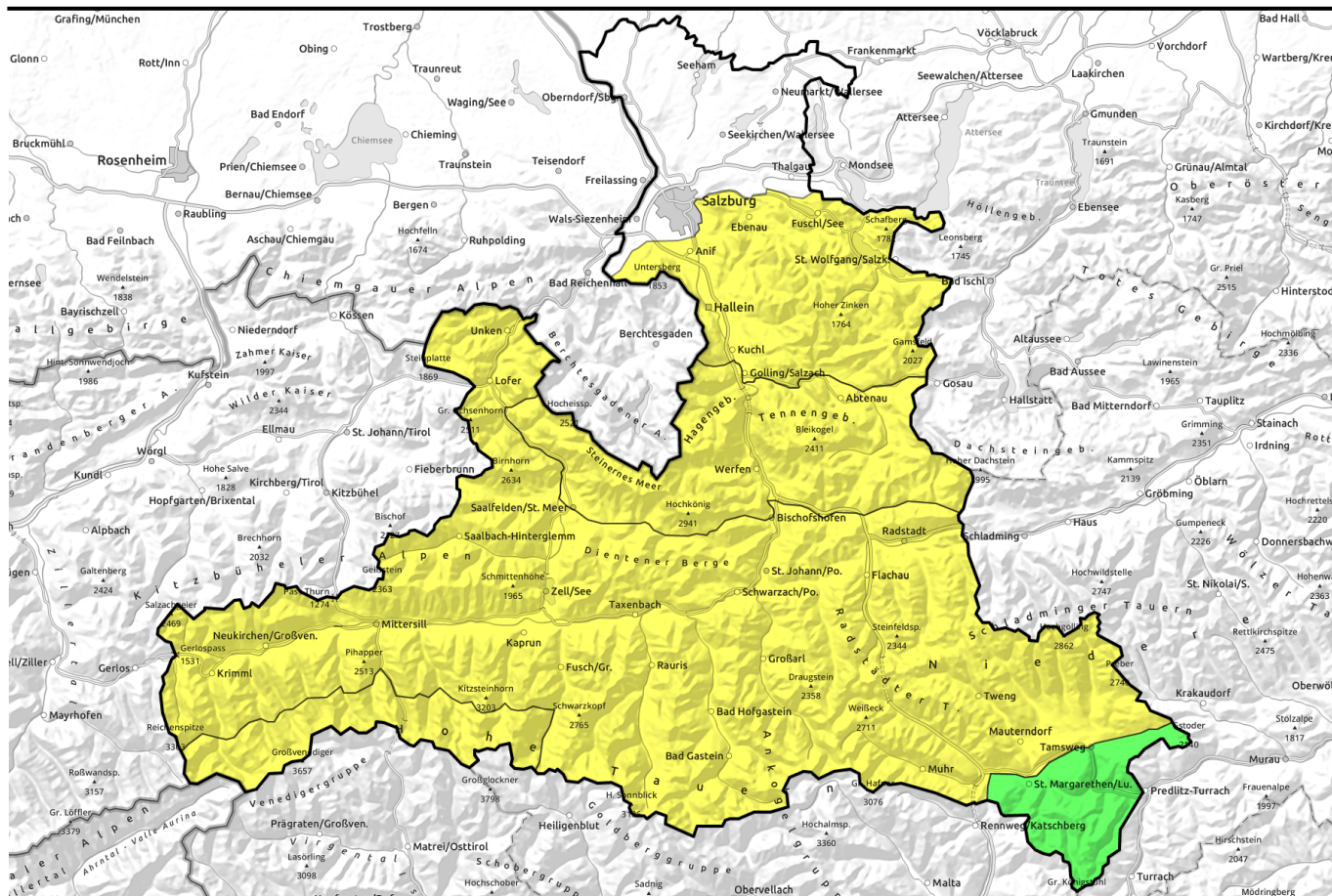
Danger ratings



Expositions



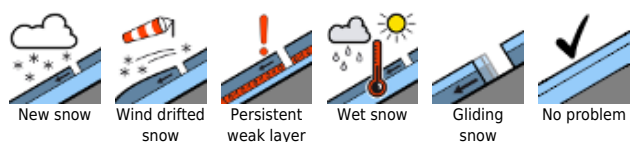
18.03.2022, afternoon



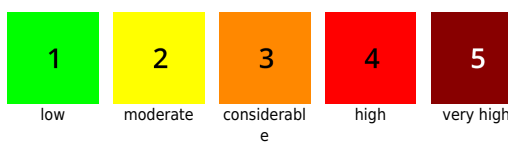
Nur gedämpfte nächtliche Ausstrahlung, tagsüber zeitweise sonnig

	Steinernes Meer, Hochkönig, Hagengebirge, Göllstock, Tennengebirge, Gosaukamm	
	Osterhorngruppe, Gamsfeldgruppe, Untersbergstock, Chiemgauer Alpen, Heutal, Reiteralpe, Loferer und Leoganger Steinberge, Kitzbüheler Alpen, Glemmtal, Oberpinzgauer Grasberge, Großvenedigergruppe Nord, Glocknergruppe Nord, Niedere Tauern Süd, Ankogelgruppe, Muhr, Goldberggruppe Nord, Dientner Grasberge, Pongauer Grasberge, Niedere Tauern Nord, Niedere Tauern Alpenhauptkamm, Goldberggruppe Alpenhauptkamm	
	Großvenedigergruppe Alpenhauptkamm, Glocknergruppe Alpenhauptkamm	
	Nockberge	

Avalanche problems



Danger ratings



Expositions



18.03.2022, morning

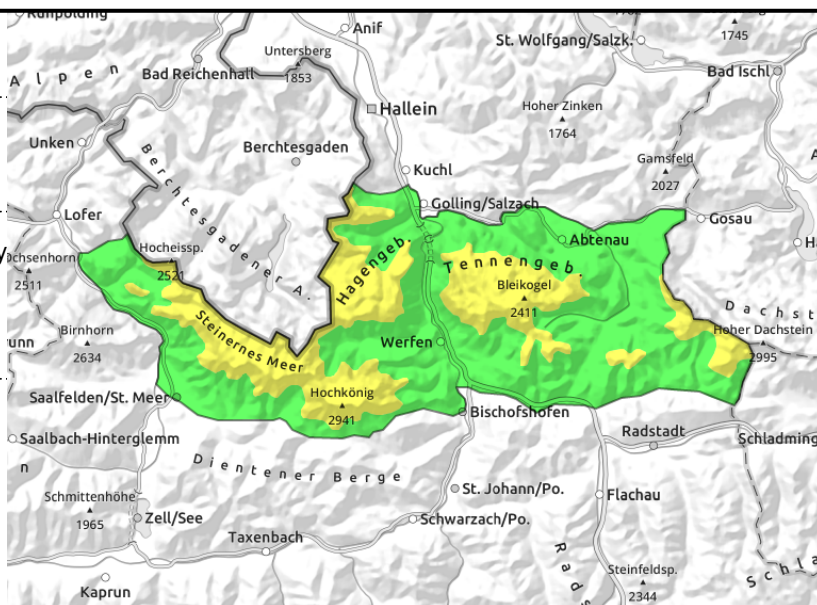
Steinernes Meer, Hochkönig, Hagengebirge, Göllstock, Tennengebirge, Gosaukamm



slight daytime cycle of naturally triggered avalanches on steep sunny slopes / glide-snow activity



shallow, small snowdrifts in gullies and steep bowls above 2000 m



Loss of firmness due to solar radiation

Avalanche danger above 2000m is MODERATE, below that altitude danger is LOW and rises to MODERATE during the day. On sun-drenched steep slopes, naturally or skier-caused small-to-medium loose-snow avalanches are possible. Also glide-snow avalanches (medium-to-large) are possible on steep grass-covered slopes. At high altitudes there are danger zones due to fresh snowdrifts behind protruberances and in gullies, increasingly in NE to E to S facing slopes, where even low additional loading can trigger a small slab. Very few danger zones exist in the shallow-snow transitions (persistent weak layer). There, large additional loading can trigger a slab avalanche which can reach medium size.

Snowpack structure

At low and intermediate altitudes the moist snowpack is shallowly/breakably encrusted. During the daytime it softens, depending on gradient and aspect. On steep sunny slopes the snowpack loses its firmness. On very steep grassy slopes the snowpack can glide away over the ground. At high altitudes there is 10-20 cm of fresh snow deposited atop a melt-freeze encrusted surface, on shady slopes atop faceted crystals where there is often unfavorable bonding. Inside the compact old snowpack there are faceted, soft layers (persistent weak layer) but these are currently unlikely to trigger.

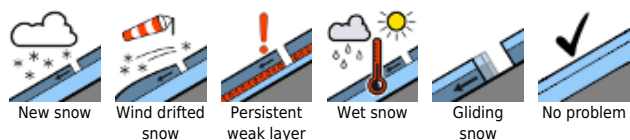
Weather

Thursday night will be heavily overcast, but dry. On Friday, heavy clouds will often impede the sun, but bring no precipitation (higher peaks in fog). As of midday, more sunshine, although impaired due to Sahara dust. Moderate N/NE winds. At 2000 m: -2 to +1 degree, at 3000m: -9 degrees. On Saturday, frequent sunshine til midday following frequently clear nights. In the afternoon, convective cloud build-up in some places, possibly cloaking the summits in fog. At 2000m: -3 to -1 degree; at 3000 m, -9 degrees.

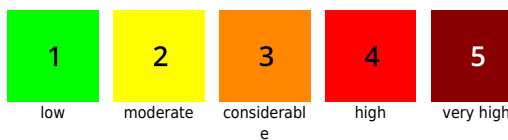
Outlook

On Saturday, daytime avalanche danger cycle. The melt-freeze will transform to firm.

Avalanche problems



Danger ratings



Expositions



18.03.2022, afternoon

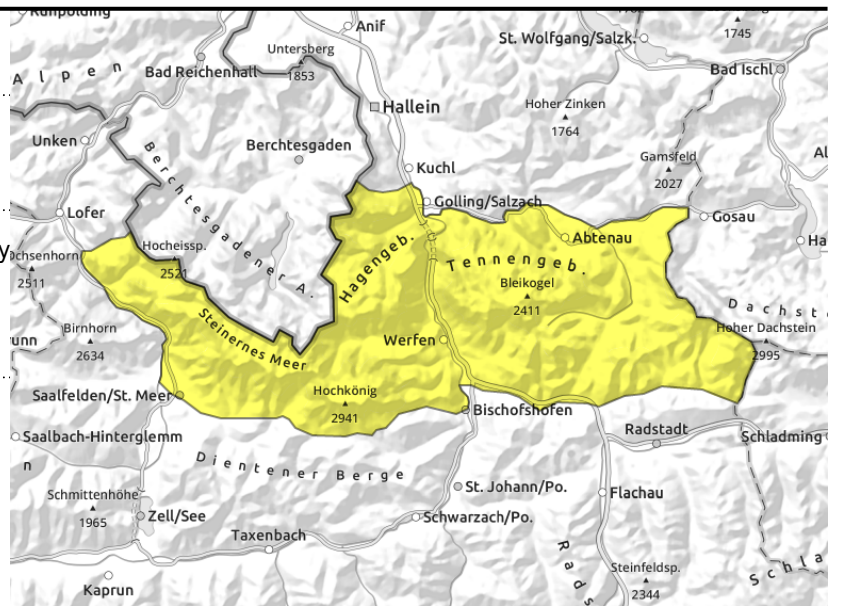
Steinernes Meer, Hochkönig, Hagengebirge, Göllstock, Tennengebirge, Gosaukamm



slight daytime cycle of naturally triggered avalanches on steep sunny slopes / glide-snow activity



shallow, small snowdrifts in gullies and steep bowls above 2000 m



Loss of firmness due to solar radiation

Avalanche danger above 2000m is MODERATE, below that altitude danger is LOW and rises to MODERATE during the day. On sun-drenched steep slopes, naturally or skier-caused small-to-medium loose-snow avalanches are possible. Also glide-snow avalanches (medium-to-large) are possible on steep grass-covered slopes. At high altitudes there are danger zones due to fresh snowdrifts behind protruberances and in gullies, increasingly in NE to E to S facing slopes, where even low additional loading can trigger a small slab. Very few danger zones exist in the shallow-snow transitions (persistent weak layer). There, large additional loading can trigger a slab avalanche which can reach medium size.

Snowpack structure

At low and intermediate altitudes the moist snowpack is shallowly/breakably encrusted. During the daytime it softens, depending on gradient and aspect. On steep sunny slopes the snowpack loses its firmness. On very steep grassy slopes the snowpack can glide away over the ground. At high altitudes there is 10-20 cm of fresh snow deposited atop a melt-freeze encrusted surface, on shady slopes atop faceted crystals where there is often unfavorable bonding. Inside the compact old snowpack there are faceted, soft layers (persistent weak layer) but these are currently unlikely to trigger.

Weather

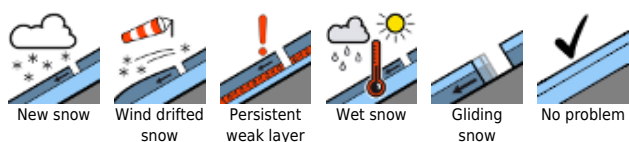
Thursday night will be heavily overcast, but dry. On Friday, heavy clouds will often impede the sun, but bring no precipitation (higher peaks in fog). As of midday, more sunshine, although impaired due to Sahara dust. Moderate N/NE winds. At 2000 m: -2 to +1 degree, at 3000m: -9 degrees.

On Saturday, frequent sunshine til midday following frequently clear nights. In the afternoon, convective cloud build-up in some places, possibly cloaking the summits in fog. At 2000m: -3 to -1 degree; at 3000 m, -9 degrees.

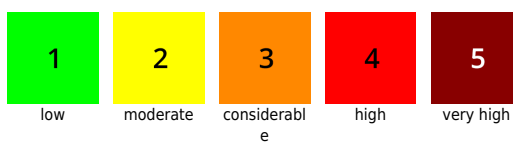
Outlook

On Saturday, daytime avalanche danger cycle. The melt-freeze will transform to firm.

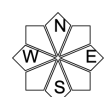
Avalanche problems



Danger ratings

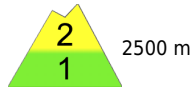
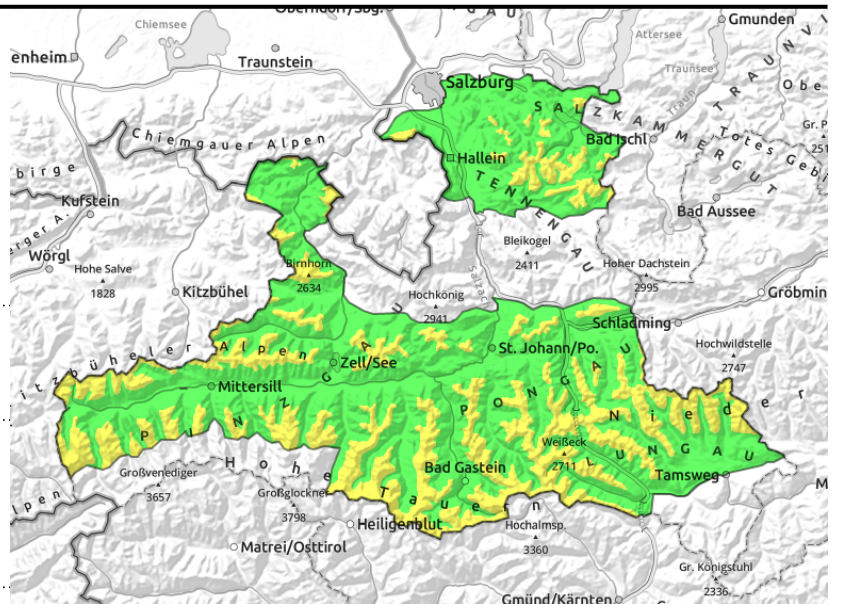




Expositions

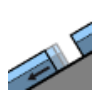



18.03.2022, morning

Osterhorngruppe, Gamsfeldgruppe, Untersbergstock, Chiemgauer Alpen, Heutal, Reiteralpe, Loferer und Leoganger Steinberge, Kitzbüheler Alpen, Glemmtal, Oberpinzgauer Grasberge, Großvenedigergruppe Nord, Glocknergruppe Nord, Niedere Tauern Süd, Ankogelgruppe, Muhr, Goldberggruppe Nord, Dientner Grasberge, Pongauer Grasberge, Niedere Tauern Nord, Niedere Tauern Alpenhauptkamm, Goldberggruppe Alpenhauptkamm



  delayed daytime cycle of naturally triggered avalanches on steep and sun-drenched slopes

  on extremely steep grassy slopes, possible at any time

Loss of firmness as soon as the sun comes out

Avalanche danger above 2500m is MODERATE, below that altitude danger is LOW. In sun-drenched steep terrain small-to-medium wet loose-snow avalanches are possible in some spots, either naturally or skier-caused. Also glide-snow avalanches (medium to large) are possible in steep grassy terrain. Very few danger zones exist in transitions where snow is shallow in shady steep terrain (persistent weak layer). There, large additional loading could trigger a slab which could grow to medium size.

Snowpack structure

At low and intermediate altitudes the moistened snowpack is initially breakable or has a melt-freeze crust capable of bearing loads. During the day it softens, depending on gradient and aspect, on steep sunny slopes it forfeits its firmness. On very steep grassy slopes the snowpack glides over the ground. At high altitudes there are a few cm of fresh snow, moistened by the solar radiation. Inside the still compact old snowpack there are faceted, soft layers (persistent weak layer) but these are currently unlikely to trigger.

Weather

Thursday night will be heavily overcast, but dry. On Friday, heavy clouds will often impede the sun, but bring no precipitation (higher peaks in fog). As of midday, more sunshine, although impaired due to Sahara dust. Moderate N/NE winds. At 2000 m: -2 to +1 degree, at 3000m: -9 degrees.

On Saturday, frequent sunshine til midday following frequently clear nights. In the afternoon, convective cloud build-up in some places, possibly cloaking the summits in fog. At 2000m: -3 to -1 degree; at 3000 m, -9 degrees.

Outlook

On Saturday, daytime avalanche danger cycle. The melt-freeze will transform to firm.

Avalanche problems



Danger ratings

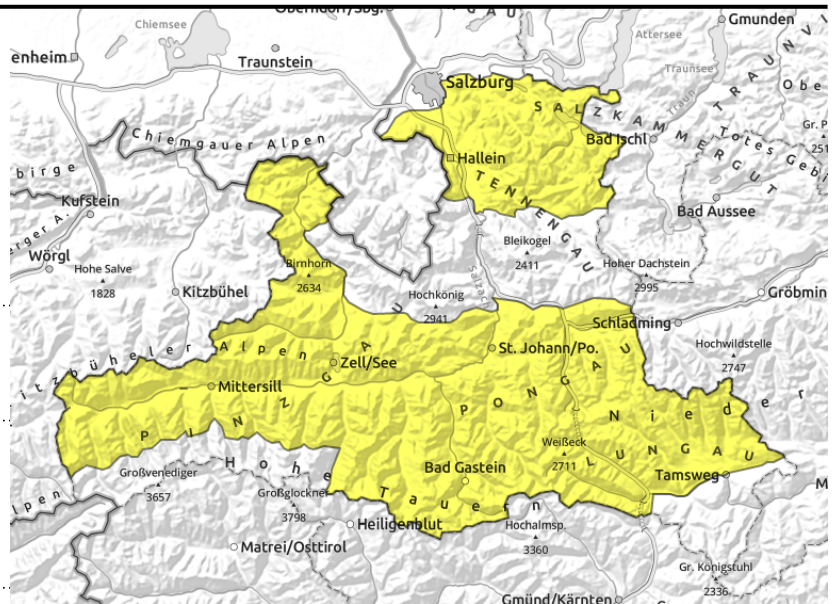


Expositions



18.03.2022, afternoon

Osterhorngruppe, Gamsfeldgruppe, Untersbergstock, Chiemgauer Alpen, Heutal, Reiteralpe, Loferer und Leoganger Steinberge, Kitzbüheler Alpen, Glemmtal, Oberpinzgauer Grasberge, Großvenedigergruppe Nord, Glocknergruppe Nord, Niedere Tauern Süd, Ankogelgruppe, Muhr, Goldberggruppe Nord, Dientner Grasberge, Pongauer Grasberge, Niedere Tauern Nord, Niedere Tauern Alpenhauptkamm, Goldberggruppe Alpenhauptkamm



delayed daytime cycle of naturally triggered avalanches on steep and sun-drenched slopes



on extremely steep grassy slopes, possible at any time

Loss of firmness as soon as the sun comes out

Avalanche danger above 2500m is MODERATE, below that altitude danger is LOW. In sun-drenched steep terrain small-to-medium wet loose-snow avalanches are possible in some spots, either naturally or skier-caused. Also glide-snow avalanches (medium to large) are possible in steep grassy terrain. Very few danger zones exist in transitions where snow is shallow in shady steep terrain (persistent weak layer). There, large additional loading could trigger a slab which could grow to medium size.

Snowpack structure

At low and intermediate altitudes the moistened snowpack is initially breakable or has a melt-freeze crust capable of bearing loads. During the day it softens, depending on gradient and aspect, on steep sunny slopes it forfeits its firmness. On very steep grassy slopes the snowpack glides over the ground. At high altitudes there are a few cm of fresh snow, moistened by the solar radiation. Inside the still compact old snowpack there are faceted, soft layers (persistent weak layer) but these are currently unlikely to trigger.

Weather

Thursday night will be heavily overcast, but dry. On Friday, heavy clouds will often impede the sun, but bring no precipitation (higher peaks in fog). As of midday, more sunshine, although impaired due to Sahara dust. Moderate N/NE winds. At 2000 m: -2 to +1 degree, at 3000m: -9 degrees.

On Saturday, frequent sunshine til midday following frequently clear nights. In the afternoon, convective cloud build-up in some places, possibly cloaking the summits in fog. At 2000m: -3 to -1 degree; at 3000 m, -9 degrees.

Outlook

On Saturday, daytime avalanche danger cycle. The melt-freeze will transform to firm.

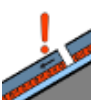
Avalanche problems



New snow



Wind drifted snow



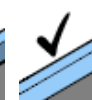
Persistent weak layer



Wet snow

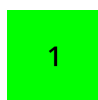


Gliding snow



No problem

Danger ratings



1

low



2

moderate



3

considerable



4

high



5

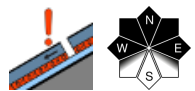
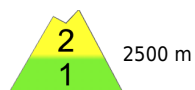
very high

Expositions

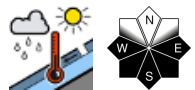


18.03.2022, morning

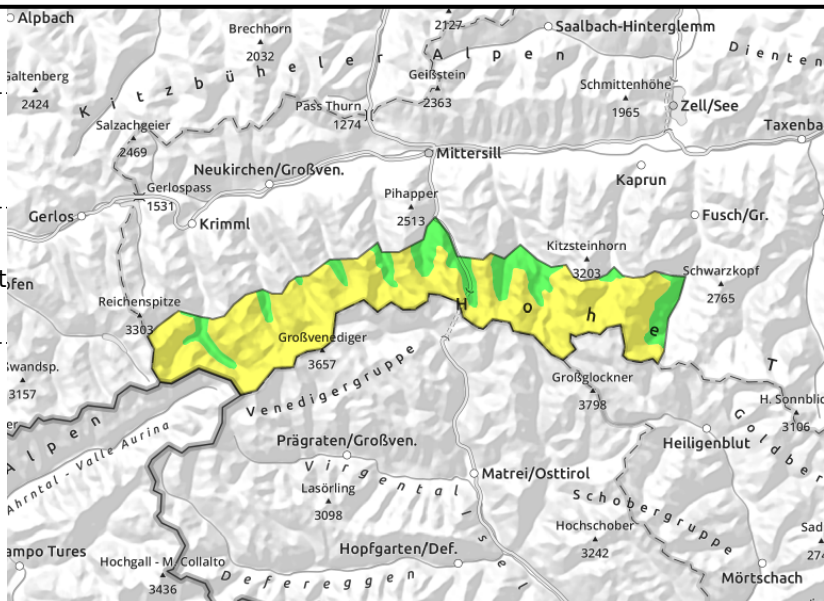
Großvenedigergruppe Alpenhauptkamm,
Glocknergruppe Alpenhauptkamm



hardened foehn-induced snowdrifts atop instable base at high altitudes



daytime cycle of naturally triggered avalanches in steep sun-drenched terrain, also glide-snow avalanches



Limited daytime cycle at low and intermediate altitudes, persistent weak layer in high alpine regions

Avalanche danger above 2000m is MODERATE, below that altitude danger is initially LOW and rises to MODERATE during the day. On sun-drenched steep slopes, naturally or skier-caused small-to-medium loose-snow avalanches are possible. Also glide-snow avalanches (medium-to-large) are possible on steep grass-covered slopes. Where there was foehn wind on the weekend (many signs of wind impact) there are some snowdrifts on W/N/E facing slopes which can be triggered above 2500 m even by the impulse of one single person as a medium-sized slab. The situation is not easy to assess because there are many hardened and windblown surfaces. Very few danger zones exist in the shallow-snow transitions (persistent weak layer). There, large additional loading can trigger a slab avalanche which can reach medium size.

Snowpack structure

At low and intermediate altitudes the moist snowpack is shallowly/breakably encrusted. During the daytime it softens, depending on gradient and aspect. On steep sunny slopes the snowpack loses its firmness. On very steep grassy slopes the snowpack can glide away over the ground. At high altitudes there is 10-20 cm of fresh snow deposited atop a melt-freeze encrusted surface, on shady slopes atop faceted crystals where there is often unfavorable bonding. Inside the compact old snowpack there are faceted, soft layers (persistent weak layer) but these are currently unlikely to trigger.

Weather

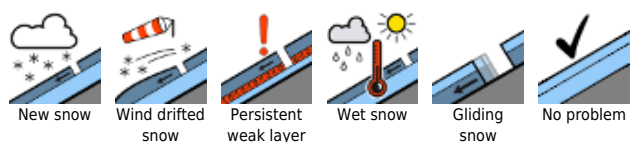
Thursday night will be heavily overcast, but dry. On Friday, heavy clouds will often impede the sun, but bring no precipitation (higher peaks in fog). As of midday, more sunshine, although impaired due to Sahara dust. Moderate N/NE winds. At 2000 m: -2 to +1 degree, at 3000m: -9 degrees.

On Saturday, frequent sunshine til midday following frequently clear nights. In the afternoon, convective cloud build-up in some places, possibly cloaking the summits in fog. At 2000m: -3 to -1 degree; at 3000 m, -9 degrees.

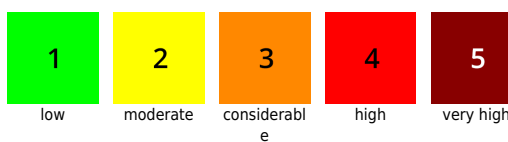
Outlook

On Saturday, daytime avalanche danger cycle. The melt-freeze will transform to firn.

Avalanche problems



Danger ratings



Expositions



18.03.2022, afternoon

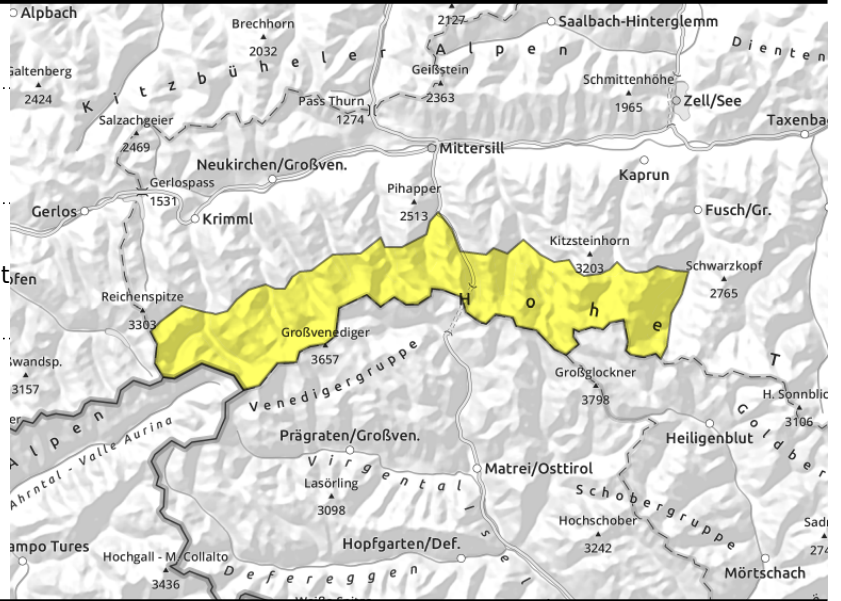
Großvenedigergruppe Alpenhauptkamm,
Glocknergruppe Alpenhauptkamm



hardened foehn-induced snowdrifts atop instable base at high altitudes



daytime cycle of naturally triggered avalanches in steep sun-drenched terrain, also glide-snow avalanches



Limited daytime cycle at low and intermediate altitudes, persistent weak layer in high alpine regions

Avalanche danger above 2000m is MODERATE, below that altitude danger is initially LOW and rises to MODERATE during the day. On sun-drenched steep slopes, naturally or skier-caused small-to-medium loose-snow avalanches are possible. Also glide-snow avalanches (medium-to-large) are possible on steep grass-covered slopes. Where there was foehn wind on the weekend (many signs of wind impact) there are some snowdrifts on W/N/E facing slopes which can be triggered above 2500 m even by the impulse of one single person as a medium-sized slab. The situation is not easy to assess because there are many hardened and windblown surfaces. Very few danger zones exist in the shallow-snow transitions (persistent weak layer). There, large additional loading can trigger a slab avalanche which can reach medium size.

Snowpack structure

At low and intermediate altitudes the moist snowpack is shallowly/breakably encrusted. During the daytime it softens, depending on gradient and aspect. On steep sunny slopes the snowpack loses its firmness. On very steep grassy slopes the snowpack can glide away over the ground. At high altitudes there is 10-20 cm of fresh snow deposited atop a melt-freeze encrusted surface, on shady slopes atop faceted crystals where there is often unfavorable bonding. Inside the compact old snowpack there are faceted, soft layers (persistent weak layer) but these are currently unlikely to trigger.

Weather

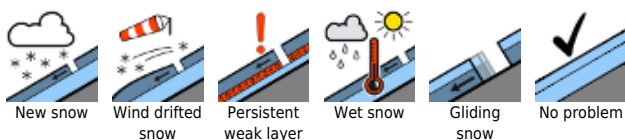
Thursday night will be heavily overcast, but dry. On Friday, heavy clouds will often impede the sun, but bring no precipitation (higher peaks in fog). As of midday, more sunshine, although impaired due to Sahara dust. Moderate N/NE winds. At 2000 m: -2 to +1 degree, at 3000m: -9 degrees.

On Saturday, frequent sunshine til midday following frequently clear nights. In the afternoon, convective cloud build-up in some places, possibly cloaking the summits in fog. At 2000m: -3 to -1 degree; at 3000 m, -9 degrees.

Outlook

On Saturday, daytime avalanche danger cycle. The melt-freeze will transform to firn.

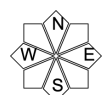
Avalanche problems



Danger ratings

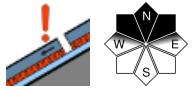


Expositions

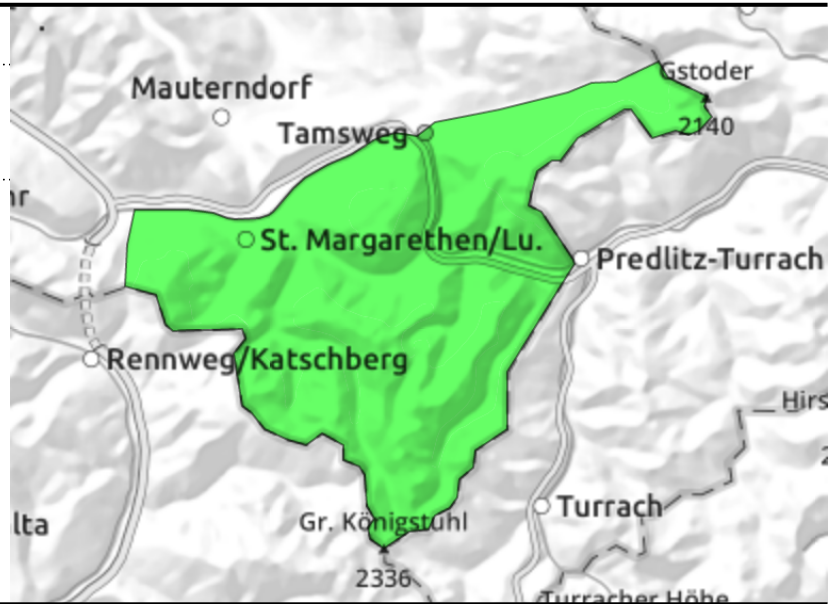


18.03.2022

Nockberge



faceted intermediate layers in old snow, triggerable only in isolated cases at rims of very steep gullies and bowls



Predominantly stable, few triggerable spots for avalanches

Avalanche danger is LOW. In shallow-snow transitions from little to lots of snow, e.g. gullies, behind steep protruberances, in a few places in extremely steep, shady terrain an avalanche could be triggered by large additional loading (stomping, falling) due to the persistent weak layer.

Snowpack structure

The snowpack shows signs of storm-strength wintery winds and a long phase of dryness. The surfaces are often melt-freeze encrusted or hardened, snow depths vary widely. Above the treeline the terrain is windblown. In the old snow are soft layers of faceted crystals which can be triggered only in isolated cases in outlying terrain.

Weather

Thursday night will be heavily overcast, but dry. On Friday, heavy clouds will often impede the sun, but bring no precipitation (higher peaks in fog). As of midday, more sunshine, although impaired due to Sahara dust. Moderate N/NE winds. At 2000 m: -2 to +1 degree.
 On Saturday, frequent sunshine til midday following frequently clear nights. In the afternoon, convective cloud build-up in some places, possibly cloaking the summits in fog. At 2000m: -3 to -1 degree.

Outlook

On Saturday, favorable conditions, no significant change in avalanche danger

Translated by Jeffrey McCabe, www.creativtrans.com

Avalanche problems



Danger ratings



Expositions

