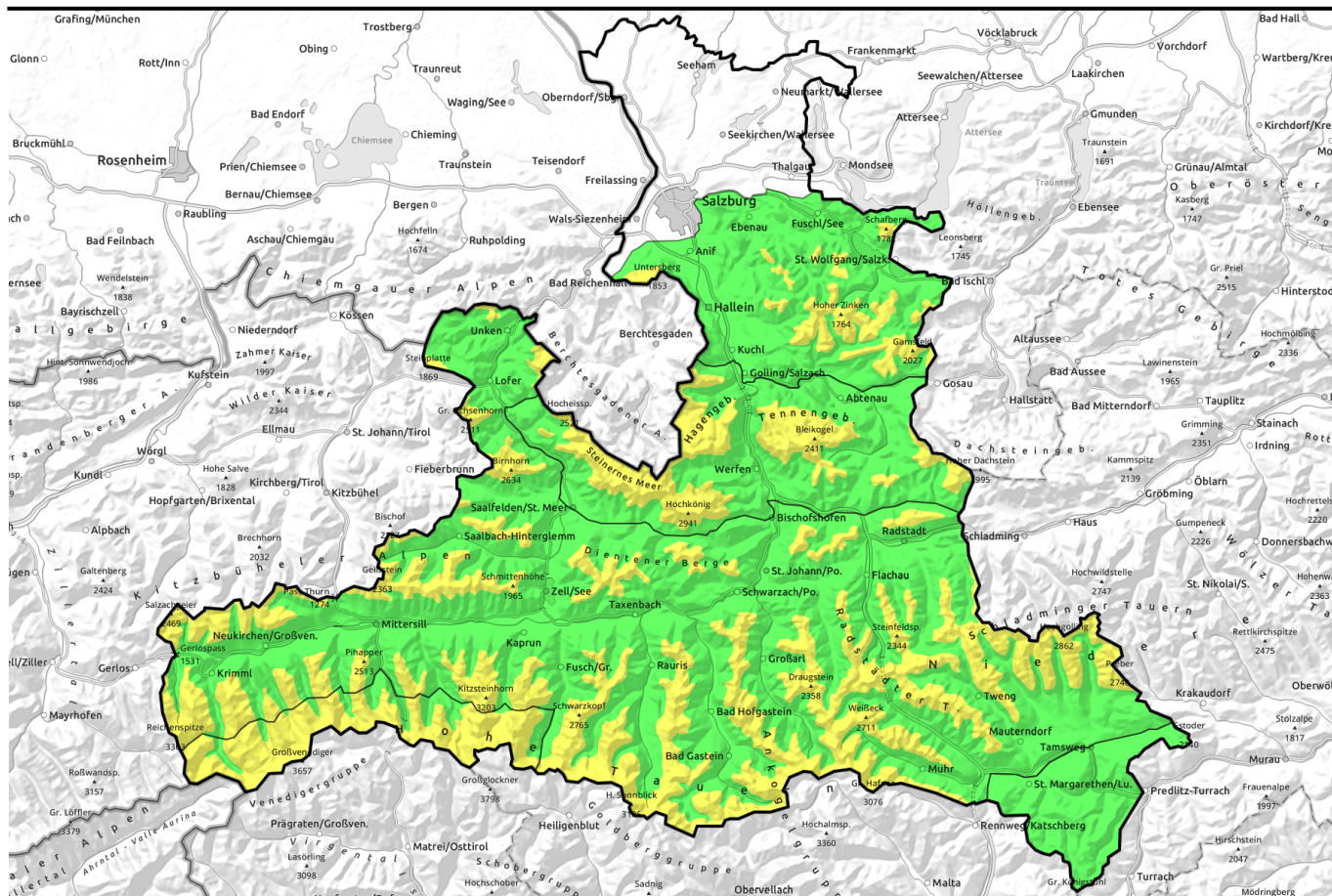


# 17.03.2022, morning



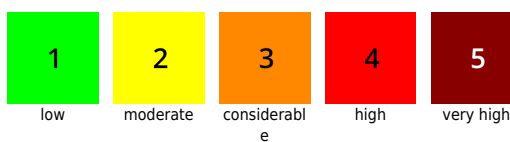
## Melt-freeze crusts turning to firn. Slight daytime cycle of avalanche danger.

	2000 m	Steinernes Meer, Hochkönig, Hagengebirge, Göllstock, Tennengebirge, Gosaukamm	
	2500 m	Osterhorngruppe, Gamsfeldgruppe, Untersbergstock, Chiemgauer Alpen, Heutal, Reiteralpe, Loferer und Leoganger Steinberge, Kitzbüheler Alpen, Gemtalm, Oberpinzgauer Grasberge, Großvenedigergruppe Nord, Glocknergruppe Nord, Niedere Tauern Süd, Ankogelgruppe, Muhr, Goldberggruppe Nord, Dientner Grasberge, Pongauer Grasberge, Niedere Tauern Nord, Niedere Tauern Alpenhauptkamm, Goldberggruppe Alpenhauptkamm	
	2500 m	Großvenedigergruppe Alpenhauptkamm, Glocknergruppe Alpenhauptkamm	
		Nockberge	

### Avalanche problems



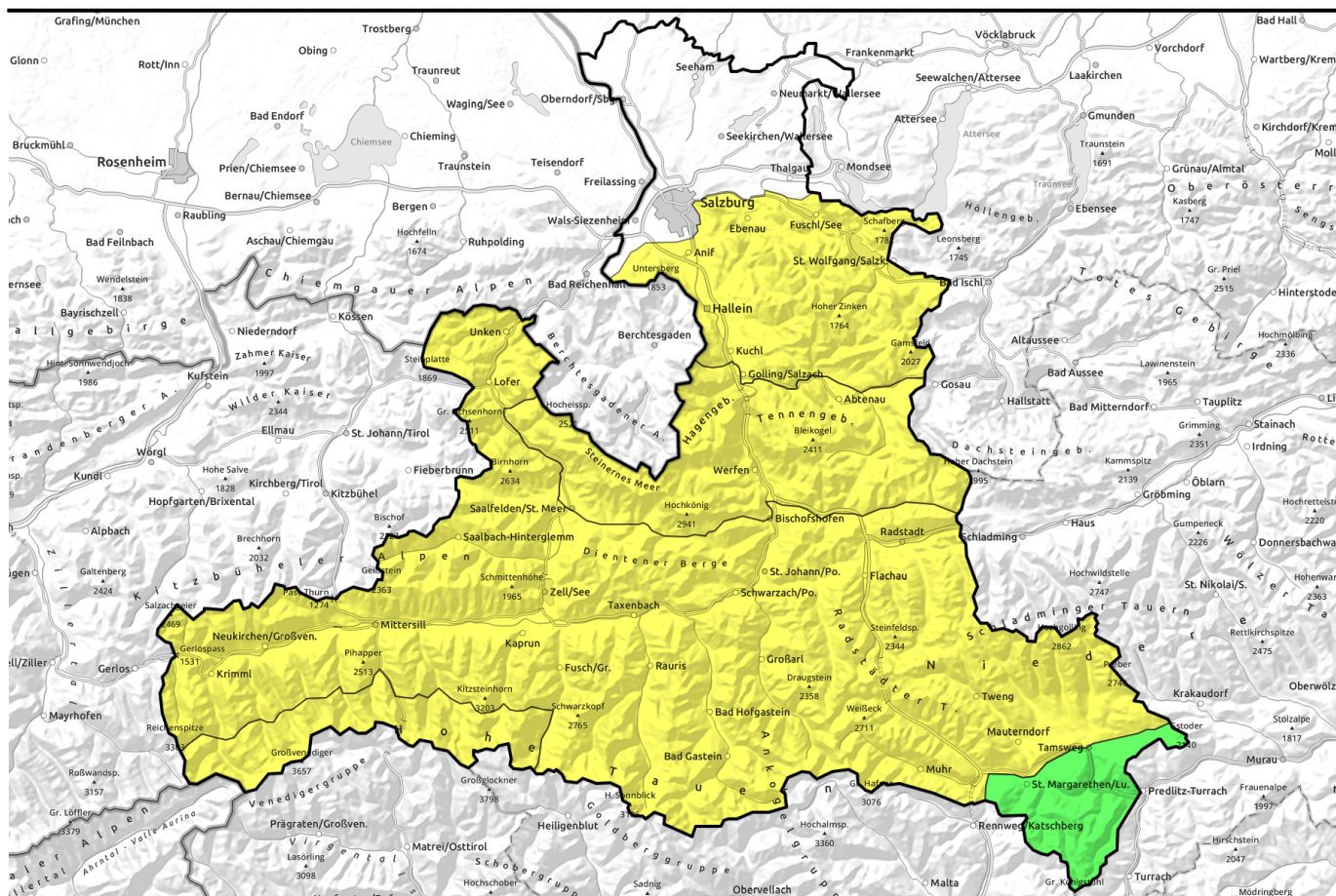
### Danger ratings



### Expositions



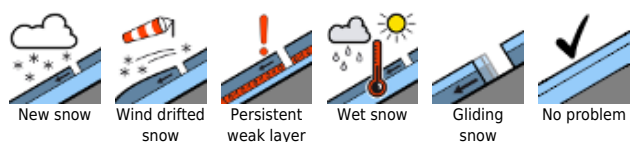
# 17.03.2022, afternoon



## Harsch firnt auf, leichter Tagesgang der Lawinenaktivität

	Steinernes Meer, Hochkönig, Hagengebirge, Göllstock, Tennengebirge, Gosaukamm	
	Osterhorngruppe, Gamsfeldgruppe, Untersbergstock, Chiemgauer Alpen, Heutal, Reiteralpe, Loferer und Leoganger Steinberge, Kitzbüheler Alpen, Glemmtal, Oberpinzgauer Grasberge, Großvenedigergruppe Nord, Glocknergruppe Nord, Niedere Tauern Süd, Ankogelgruppe, Muhr, Goldberggruppe Nord, Dientner Grasberge, Pongauer Grasberge, Niedere Tauern Nord, Niedere Tauern Alpenhauptkamm, Goldberggruppe Alpenhauptkamm	
	Großvenedigergruppe Alpenhauptkamm, Glocknergruppe Alpenhauptkamm	
	Nockberge	

### Avalanche problems



### Danger ratings





### Expositions





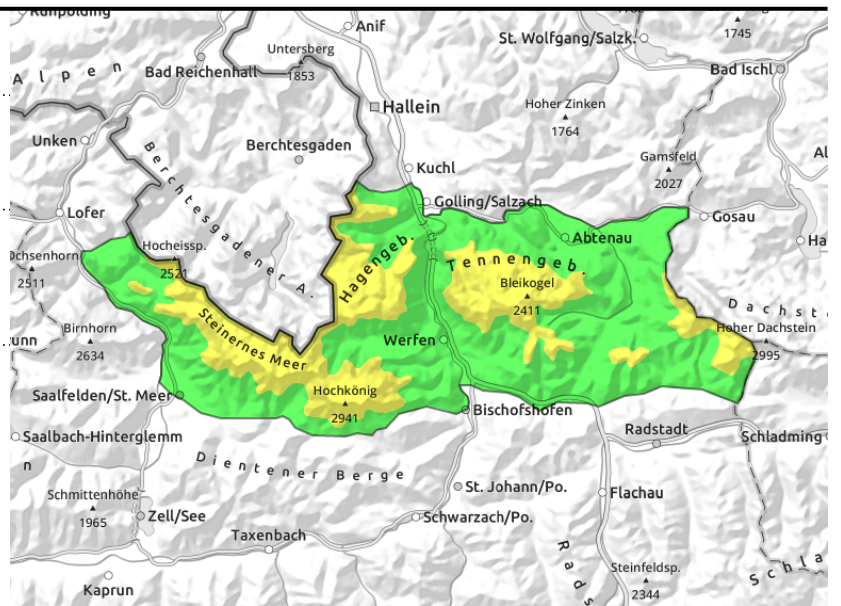
# 17.03.2022, morning

**Steinernes Meer, Hochkönig, Hagengebirge, Göllstock, Tennengebirge, Gosaukamm**



  daytime cycle of naturally triggered avalanches on steep sunny slopes

  shallow, small snowdrift masses in gullies and bowls above 2000m



## Daytime rise in avalanche danger at low and intermediate altitudes

Avalanche danger above 2000m is MODERATE, below that altitude danger is LOW and rises to MODERATE during the day. On sun-drenched steep slopes, naturally or skier-caused small-to-medium loose-snow avalanches are possible. Also glide-snow avalanches (medium-to-large) are possible on steep grass-covered slopes. At high altitudes there are danger zones due to fresh snowdrifts behind protruberances and in gullies, increasingly in NE to E to S facing slopes, where even low additional loading can trigger a small slab. Very few danger zones exist in the shallow-snow transitions (persistent weak layer). There, large additional loading can trigger a slab avalanche which can reach medium size.

### Snowpack structure

At low and intermediate altitudes the moist snowpack is encrusted due to rainfall. During the daytime it turns to firm snow, depending on gradient and aspect. On steep sunny slopes the snowpack loses its firmness. On very steep grassy slopes the snowpack can glide away over the ground. At high altitudes there is 10-20 cm of fresh snow deposited atop a melt-freeze encrusted surface, on shady slopes atop faceted crystals where there is often unfavorable bonding. Inside the compact old snowpack there are faceted, soft layers (persistent weak layer) but these are currently unlikely to trigger.

### Weather

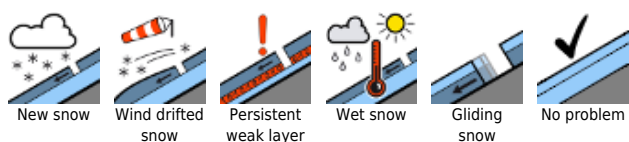
Following a night of clear skies it will be sunny on Thursday, but due to cirrus clouds and Sahara dust it will be impaired. Winds will be moderate from W/NW. At 2000 m: 0-5 degrees; on Hochkönig, -2 degrees.

Thursday night will be lightly to heavily overcast, but dry. On Friday, heavy clouds will often impede the sun, but bring no precipitation. At 2000 m: -1 to +1 degree, at 3000m: -6 degrees.

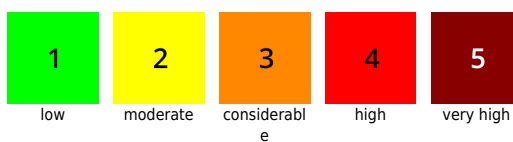
### Outlook

On Friday, lots of clouds, so hardly any naturally triggered avalanches.

#### Avalanche problems



#### Danger ratings



#### Expositions



# 17.03.2022, afternoon

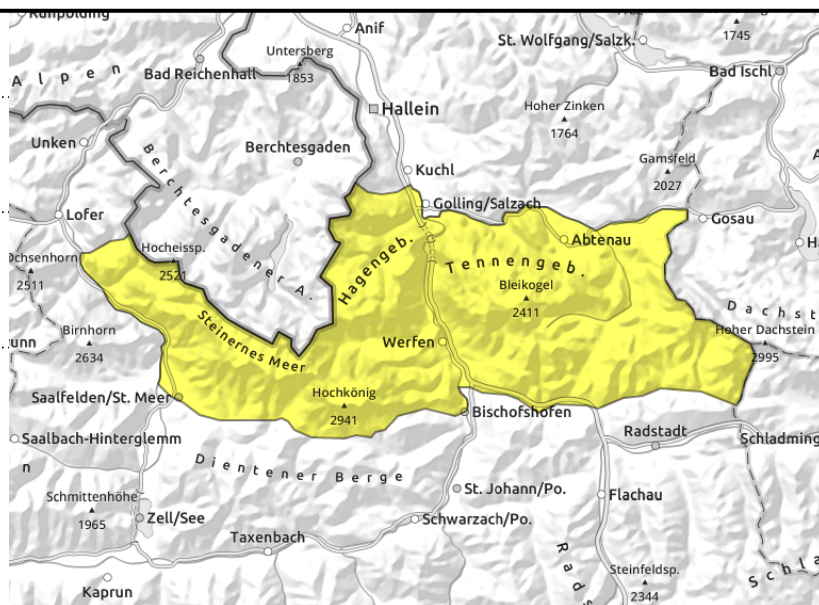
Steinernes Meer, Hochkönig, Hagengebirge, Göllstock, Tennengebirge, Gosaukamm



daytime cycle of naturally triggered avalanches on steep sunny slopes



shallow, small snowdrift masses in gullies and bowls above 2000m



## Daytime rise in avalanche danger at low and intermediate altitudes

Avalanche danger above 2000m is MODERATE, below that altitude danger is LOW and rises to MODERATE during the day. On sun-drenched steep slopes, naturally or skier-caused small-to-medium loose-snow avalanches are possible. Also glide-snow avalanches (medium-to-large) are possible on steep grass-covered slopes. At high altitudes there are danger zones due to fresh snowdrifts behind protruberances and in gullies, increasingly in NE to E to S facing slopes, where even low additional loading can trigger a small slab. Very few danger zones exist in the shallow-snow transitions (persistent weak layer). There, large additional loading can trigger a slab avalanche which can reach medium size.

### Snowpack structure

At low and intermediate altitudes the moist snowpack is encrusted due to rainfall. During the daytime it turns to firm snow, depending on gradient and aspect. On steep sunny slopes the snowpack loses its firmness. On very steep grassy slopes the snowpack can glide away over the ground. At high altitudes there is 10-20 cm of fresh snow deposited atop a melt-freeze encrusted surface, on shady slopes atop faceted crystals where there is often unfavorable bonding. Inside the compact old snowpack there are faceted, soft layers (persistent weak layer) but these are currently unlikely to trigger.

### Weather

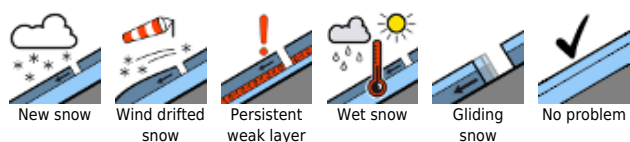
Following a night of clear skies it will be sunny on Thursday, but due to cirrus clouds and Sahara dust it will be impaired. Winds will be moderate from W/NW. At 2000 m: 0-5 degrees; on Hochkönig, -2 degrees.

Thursday night will be lightly to heavily overcast, but dry. On Friday, heavy clouds will often impede the sun, but bring no precipitation. At 2000 m: -1 to +1 degree, at 3000m: -6 degrees.

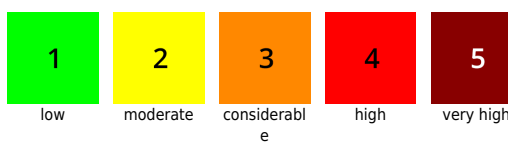
### Outlook

On Friday, lots of clouds, so hardly any naturally triggered avalanches.

#### Avalanche problems



#### Danger ratings

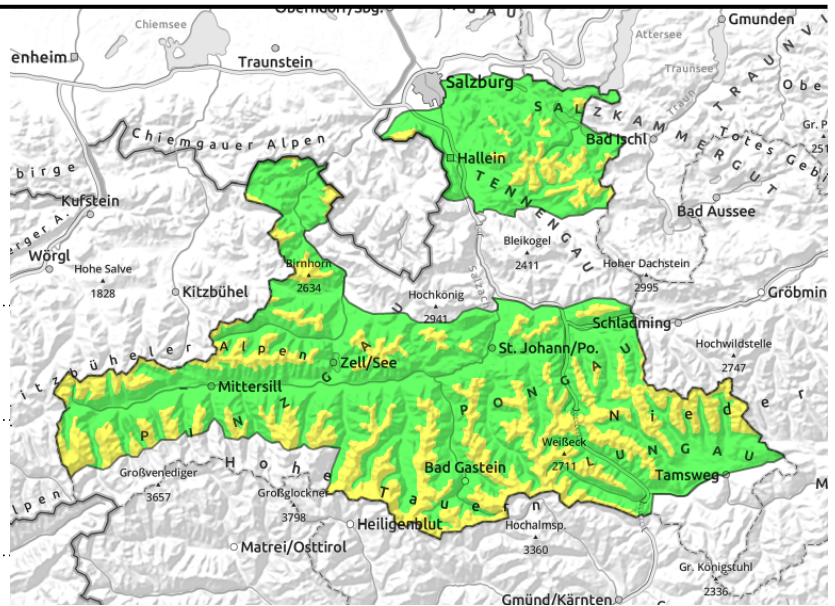


#### Expositions



# 17.03.2022, morning

Osterhorngruppe, Gamsfeldgruppe, Untersbergstock, Chiemgauer Alpen, Heutal, Reiteralpe, Loferer und Leoganger Steinberge, Kitzbüheler Alpen, Glemmtal, Oberpinzgauer Grasberge, Großvenedigergruppe Nord, Glocknergruppe Nord, Niedere Tauern Süd, Ankogelgruppe, Muhr, Goldberggruppe Nord, Dientner Grasberge, Pongauer Grasberge, Niedere Tauern Nord, Niedere Tauern Alpenhauptkamm, Goldberggruppe Alpenhauptkamm



daytime cycle of naturally triggered avalanches on steep and sun-drenched slopes

on extremely steep grassy slopes, possible at any time

## At low and intermediate altitudes, daytime rise in avalanche danger

Avalanche danger above 2500m is MODERATE, below that altitude danger is LOW. In sun-drenched steep terrain small-to-medium wet loose-snow avalanches are possible in some spots, either naturally or skier-caused. Also glide-snow avalanches (medium to large) are possible in steep grassy terrain. Very few danger zones exist in transitions where snow is shallow in shady steep terrain (persistent weak layer). There, large additional loading could trigger a slab which could grow to medium size.

### Snowpack structure

At low and intermediate altitudes the moistened snowpack is initially breakable or has a melt-freeze crust capable of bearing loads. During the day it turns to firn snow, depending on gradient and aspect, on steep sunny slopes it forfeits its firmness. On very steep grassy slopes the snowpack glides over the ground. At high altitudes there are a few cm of fresh snow, moistened by the solar radiation. Inside the still compact old snowpack there are faceted, soft layers (persistent weak layer) but these are currently unlikely to trigger.

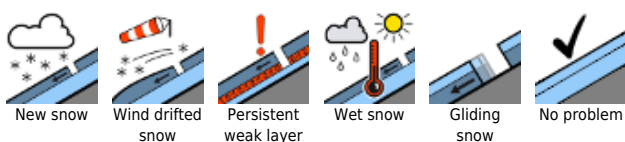
### Weather

Near the Main Tauern Ridge the residual cloud could persist, elsewhere it will be sunny on Thursday, following a night of clear skies, though impaired by cirrus clouds and Sahara dust. Winds will be brisk from the northwest. At 2000 m: 0 to 5 degrees; at 3000 m: -2 degrees. On Thursday night, slightly to heavily clouded, no precipitation. On Friday, heavy cloud will move in continually, impair the sun, but bring no precipitation. At 2000 m: 0 degrees, at 3000m: -6 degrees.

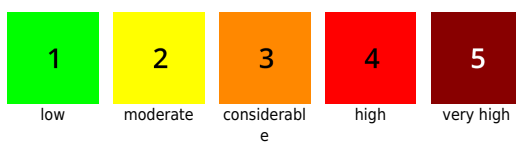
### Outlook

On Friday, lots of clouds, so hardly any naturally triggered avalanches.

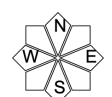
#### Avalanche problems



#### Danger ratings

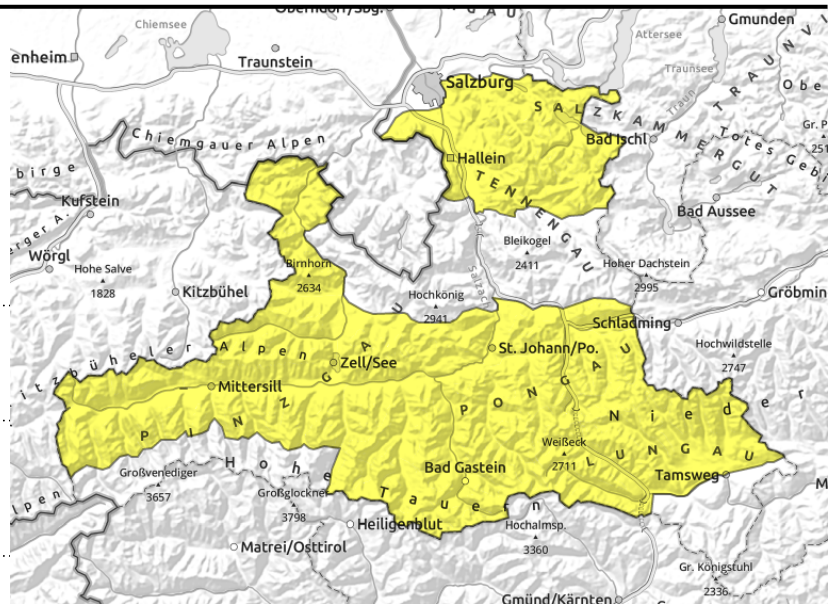


#### Expositions



# 17.03.2022, afternoon

Osterhorngruppe, Gamsfeldgruppe, Untersbergstock, Chiemgauer Alpen, Heutal, Reiteralpe, Loferer und Leoganger Steinberge, Kitzbüheler Alpen, Glemmtal, Oberpinzgauer Grasberge, Großvenedigergruppe Nord, Glocknergruppe Nord, Niedere Tauern Süd, Ankogelgruppe, Muhr, Goldberggruppe Nord, Dientner Grasberge, Pongauer Grasberge, Niedere Tauern Nord, Niedere Tauern Alpenhauptkamm, Goldberggruppe Alpenhauptkamm



daytime cycle of naturally triggered avalanches on steep and sun-drenched slopes



on extremely steep grassy slopes, possible at any time

## At low and intermediate altitudes, daytime rise in avalanche danger

Avalanche danger above 2500m is MODERATE, below that altitude danger is LOW. In sun-drenched steep terrain small-to-medium wet loose-snow avalanches are possible in some spots, either naturally or skier-caused. Also glide-snow avalanches (medium to large) are possible in steep grassy terrain. Very few danger zones exist in transitions where snow is shallow in shady steep terrain (persistent weak layer). There, large additional loading could trigger a slab which could grow to medium size.

### Snowpack structure

At low and intermediate altitudes the moistened snowpack is initially breakable or has a melt-freeze crust capable of bearing loads. During the day it turns to firm snow, depending on gradient and aspect, on steep sunny slopes it forfeits its firmness. On very steep grassy slopes the snowpack glides over the ground. At high altitudes there are a few cm of fresh snow, moistened by the solar radiation. Inside the still compact old snowpack there are faceted, soft layers (persistent weak layer) but these are currently unlikely to trigger.

### Weather

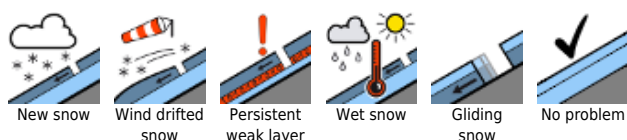
Near the Main Tauern Ridge the residual cloud could persist, elsewhere it will be sunny on Thursday, following a night of clear skies, though impaired by cirrus clouds and Sahara dust. Winds will be brisk from the northwest. At 2000 m: 0 to 5 degrees; at 3000 m: -2 degrees.

On Thursday night, slightly to heavily clouded, no precipitation. On Friday, heavy cloud will move in continually, impair the sun, but bring no precipitation. At 2000 m: 0 degrees, at 3000m: -6 degrees.

### Outlook

On Friday, lots of clouds, so hardly any naturally triggered avalanches.

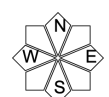
#### Avalanche problems



#### Danger ratings



#### Expositions



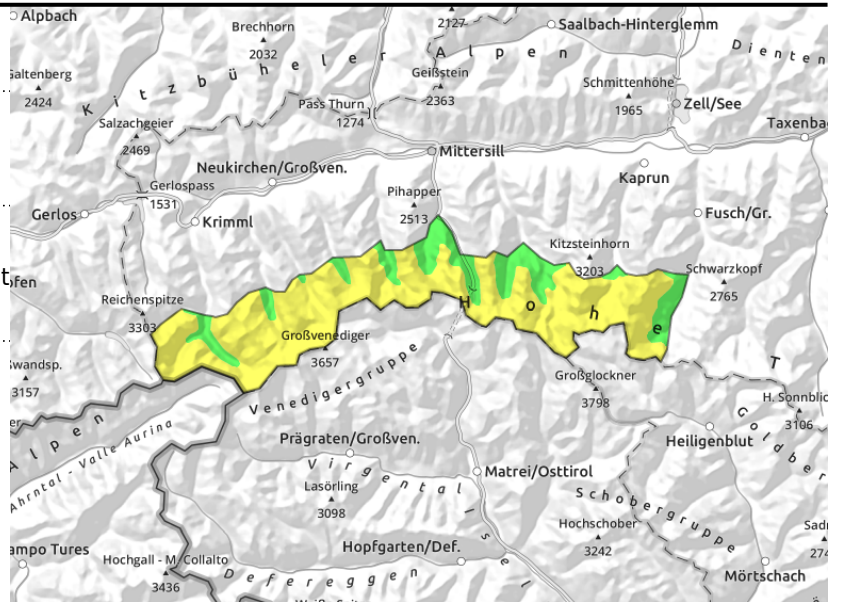
# 17.03.2022, morning

## Großvenedigergruppe Alpenhauptkamm, Glocknergruppe Alpenhauptkamm



hardened foehn-induced snowdrifts atop instable base at high altitudes

daytime cycle of naturally triggered avalanches in steep sun-drenched terrain, also glide-snow avalanches



## Daytime cycle at low and intermediate altitudes. Persistent weak layer in high alpine regions.

Avalanche danger above 2000m is MODERATE, below that altitude danger is initially LOW and rises to MODERATE during the day. On sun-drenched steep slopes, naturally or skier-caused small-to-medium loose-snow avalanches are possible. Also glide-snow avalanches (medium-to-large) are possible on steep grass-covered slopes. Where there was foehn wind on the weekend (many signs of wind impact) there are some snowdrifts on W/N/E facing slopes which can be triggered above 2500 m even by the impulse of one single person as a medium-sized slab. The situation is not easy to assess because there are many hardened and windblown surfaces. Very few danger zones exist in the shallow-snow transitions (persistent weak layer). There, large additional loading can trigger a slab avalanche which can reach medium size.

### Snowpack structure

At low and intermediate altitudes the moist snowpack is encrusted due to rainfall. During the daytime it turns to firm snow, depending on gradient and aspect. On steep sunny slopes the snowpack loses its firmness. On very steep grassy slopes the snowpack can glide away over the ground. The foehn wind on the weekend deposited snowdrifts on north-facing slopes and in bowls, often hardened but easily triggerable because they were deposited atop surface hoar and faceted powder crystals. Inside the old snowpack there are faceted, soft layers (persistent weak layer) but these are currently unlikely to trigger.

### Weather

Near the Main Tauern Ridge the residual cloud could persist, elsewhere it will be sunny on Thursday, following a night of clear skies, though impaired by cirrus clouds and Sahara dust. Winds will be brisk from the northwest. At 2000 m: 0 to 5 degrees; at 3000 m: -2 degrees.

On Thursday night, slightly to heavily clouded, no precipitation. On Friday, heavy cloud will move in continually, impair the sun, but bring no precipitation. At 2000 m: 0 degrees, at 3000m: -6 degrees.

### Outlook

On Friday, lots of clouds, so hardly any naturally triggered avalanches.

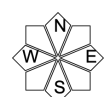
#### Avalanche problems



#### Danger ratings

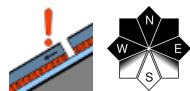


#### Expositions

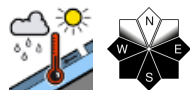


# 17.03.2022, afternoon

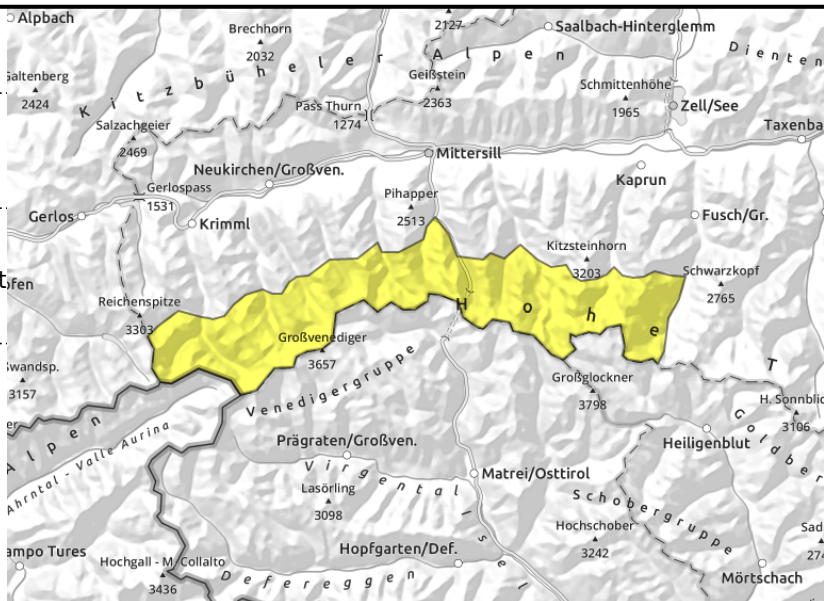
Großvenedigergruppe Alpenhauptkamm,  
Glocknergruppe Alpenhauptkamm



hardened foehn-induced snowdrifts atop instable base at high altitudes



daytime cycle of naturally triggered avalanches in steep sun-drenched terrain, also glide-snow avalanches



## Daytime cycle at low and intermediate altitudes. Persistent weak layer in high alpine regions.

Avalanche danger above 2000m is MODERATE, below that altitude danger is initially LOW and rises to MODERATE during the day. On sun-drenched steep slopes, naturally or skier-caused small-to-medium loose-snow avalanches are possible. Also glide-snow avalanches (medium-to-large) are possible on steep grass-covered slopes. Where there was foehn wind on the weekend (many signs of wind impact) there are some snowdrifts on W/N/E facing slopes which can be triggered above 2500 m even by the impulse of one single person as a medium-sized slab. The situation is not easy to assess because there are many hardened and windblown surfaces. Very few danger zones exist in the shallow-snow transitions (persistent weak layer). There, large additional loading can trigger a slab avalanche which can reach medium size.

### Snowpack structure

At low and intermediate altitudes the moist snowpack is encrusted due to rainfall. During the daytime it turns to firm snow, depending on gradient and aspect. On steep sunny slopes the snowpack loses its firmness. On very steep grassy slopes the snowpack can glide away over the ground. The foehn wind on the weekend deposited snowdrifts on north-facing slopes and in bowls, often hardened but easily triggerable because they were deposited atop surface hoar and faceted powder crystals. Inside the old snowpack there are faceted, soft layers (persistent weak layer) but these are currently unlikely to trigger.

### Weather

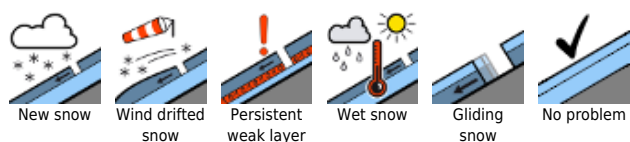
Near the Main Tauern Ridge the residual cloud could persist, elsewhere it will be sunny on Thursday, following a night of clear skies, though impaired by cirrus clouds and Sahara dust. Winds will be brisk from the northwest. At 2000 m: 0 to 5 degrees; at 3000 m: -2 degrees.

On Thursday night, slightly to heavily clouded, no precipitation. On Friday, heavy cloud will move in continually, impair the sun, but bring no precipitation. At 2000 m: 0 degrees, at 3000m: -6 degrees.

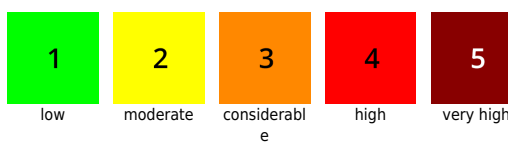
### Outlook

On Friday, lots of clouds, so hardly any naturally triggered avalanches.

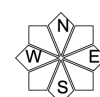
#### Avalanche problems



#### Danger ratings

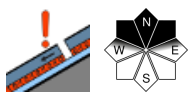


#### Expositions

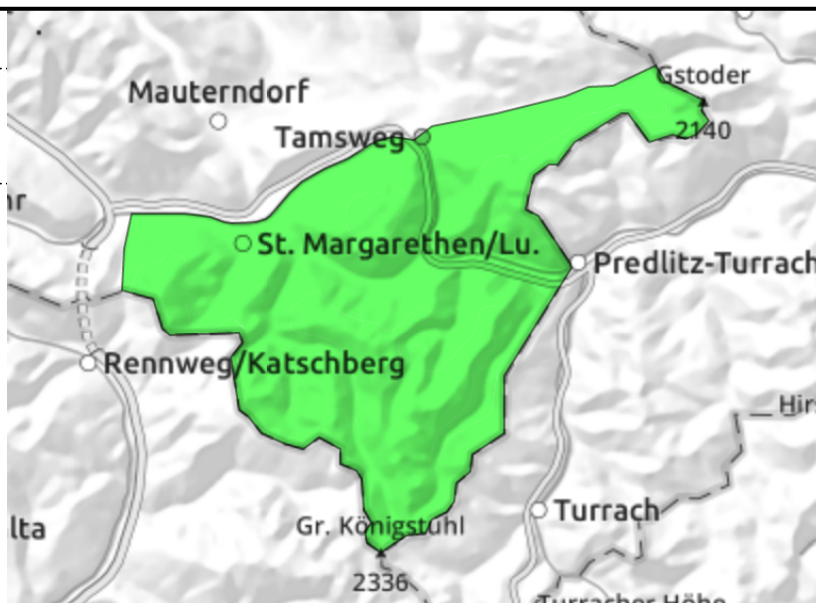


**17.03.2022**

**Nockberge**



faceted intermediate layers in old snow, triggerable only in isolated cases at rims of very steep gullies and bowls



**Predominantly stable, few triggerable spots for avalanches**

Avalanche danger is LOW. In shallow-snow transitions from little to lots of snow, e.g. gullies, behind steep protruberances, in a few places in extremely steep, shady terrain an avalanche could be triggered by large additional loading (stomping, falling) due to the persistent weak layer.

**Snowpack structure**

The snowpack shows signs of storm-strength wintery winds and a long phase of dryness. The little bit of rainfall below 1800 m has moistened the snowpack superficially. The surfaces are often melt-freeze encrusted or hardened, snow depths vary widely. Above the treeline the terrain is windblown. In the old snow are soft layers of faceted crystals which can be triggered only in isolated cases in outlying terrain.

**Weather**

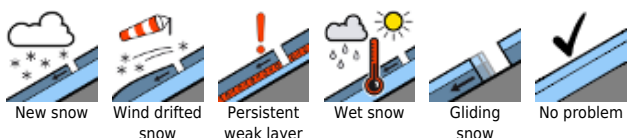
Low lying residual clouds on Thursday will disperse, it will become sunny, although cirrus clouds and Sahara dust will impair it. Winds from the south will be no disturbance. At 2000 m: 0 degrees. On Thursday night, slightly to heavily cloudy, but dry. On Friday, heavy cloud will repeatedly impede the sun, but bring no precipitation. At 2000 m: 0 degrees.

**Outlook**

On Friday, no significant change is expected.

Translated by Jeffrey McCabe, [www.creativtrans.com](http://www.creativtrans.com)

**Avalanche problems**



**Danger ratings**



**Expositions**

