

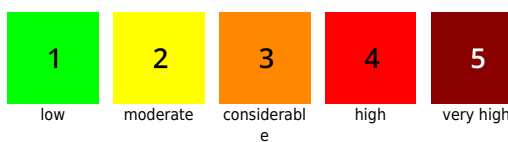
First warm day after overcast night - moderate wet-snow problem below 2200m - heed old snowdrifts in Hohe Tauern

	Nockberge		
	Untersbergstock, Chiemgauer Alpen, Heutal, Reiteralpe, Pongauer Grasberge, Dientner Grasberge, Kitzbüheler Alpen, Glemmtal, Oberpinzgauer Grasberge, Niedere Tauern Nord, Osterhorngruppe, Gamsfeldgruppe		
	Niedere Tauern Alpenhauptkamm, Goldberggruppe Alpenhauptkamm, Glocknergruppe Alpenhauptkamm		
	Großvenedigergruppe Alpenhauptkamm		
	Loferer und Leoganger Steinberge, Steinernes Meer, Hochkönig, Hagengebirge, Göllstock, Tennengebirge, Gosaukamm, Goldberggruppe Nord, Glocknergruppe Nord, Großvenedigergruppe Nord, Ankogelgruppe, Muhr, Niedere Tauern Süd		

Avalanche problems



Danger ratings



Expositions

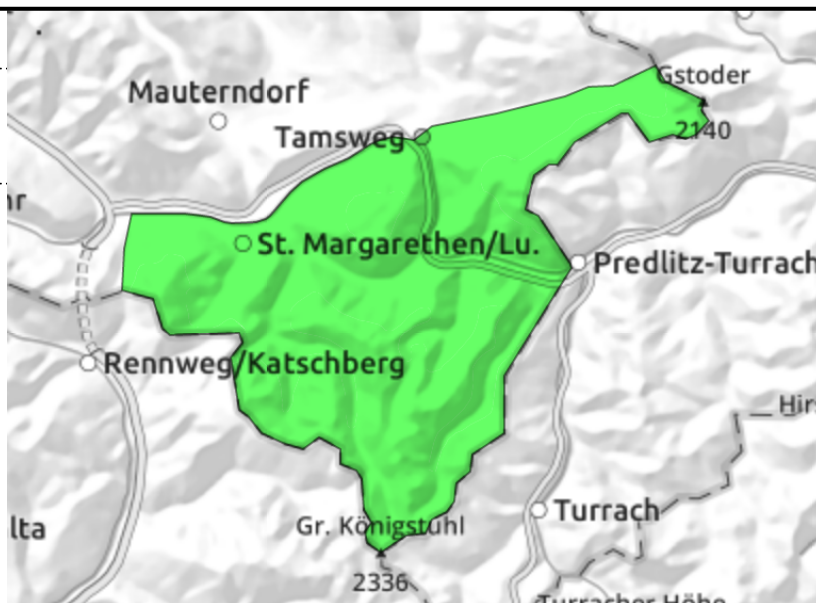


15.03.2022

Nockberge



very few danger zones - little snow on the ground



Moistened snowpack - small wet-snow avalanches possible

Avalanche danger is LOW. The main problem on Tuesday is the moistened snowpack. In very steep terrain, small wet-snow or small glide-snow avalanches are possible. Shallow-snow transition zones from shallow to deeper snow can trigger an old dry slab on a few steep and extremely steep slopes (persistent weak layer).

Snowpack structure

The snowpack shows huge effects of storm-strength wintery winds. The snowpack accumulations are well consolidated, often melt-freeze encrusted or hardened. Above the treeline the terrain is windblown, more snow lies in the bowls. Inside the old snowpack are soft layers of expansively metamorphosed (faceted) crystals which are unlikely to trigger except in isolated cases.

Weather

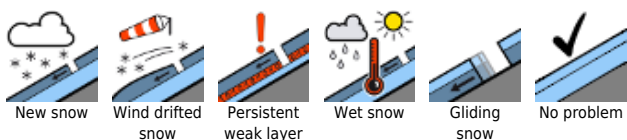
Cloudbanks above summit level will generate diffuse light on Tuesday. Some intermittent rainfall is anticipated during the night. Light southerly winds. Warmer and moister than in recent days. At 2000 m: up to 3 degrees

On Wednesday, heavy cloud cover and slackening precipitation will impede visibility to start with. The higher peaks will get a snow dusting. During the course of the day, the clouds will disperse, sunshine will follow in the afternoon. The NW winds will be blowing at 40-60 km/hr. Temperature at 2000 m: 0 degrees.

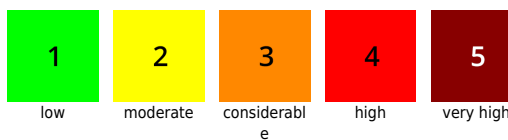
Outlook

No significant change is expected.

Avalanche problems



Danger ratings

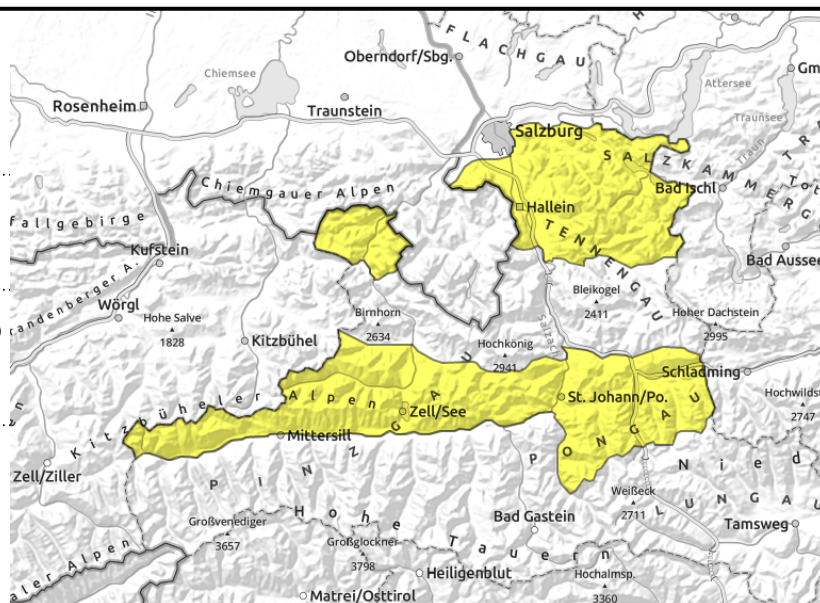


Expositions



15.03.2022

Untersbergstock, Chiemgauer Alpen, Heutal, Reiteralpe, Pongauer Grasberge, Dientner Grasberge, Kitzbüheler Alpen, Glemmtal, Oberpinzgauer Grasberge, Niedere Tauern Nord, Osterhorngruppe, Gamsfeldgruppe



superficial moist-snow slides to medium wet-snow avalanches in very steep terrain



isolated glide-snow avalanches in extremely steep grassy terrain; heed glide cracks; medium-to-large

Warmth and diffuse sunshine - moderate wet-snow problem

Avalanche danger is MODERATE.

Main problem: warmth and diffuse solar radiation, further moist-snow slides in steep terrain (naturally triggered or skier-triggered). Also: in extremely steep, rocky terrain, medium wet-snow avalanches can release.

Also glide-snow avalanches are becoming more active. Isolated releases are possible in extremely steep grass-covered terrain. They can be medium sized, sometimes large sized.

Secondary theme: very few danger zones in shallow-snow transitions in shady steep terrain (persistent weak layer), where large additional loading can trigger (seldom) a slab which can grow to medium size.

Snowpack structure

The first warm day after a night of overcast skies. The surfaces are becoming soften and moister, and the moisture seeps deeper into the snowpack, particularly on sunny slopes up to 2500m, on shady slopes up to 2000 m

The surface of the old snowpack on shady slopes consists of faceted powder at high altitudes. Inside the still compact snowpack there are expansively metamorphosed (faceted) soft layers - i.e. persistent weak layer - but these layer are unlikely to trigger at this time.

Weather

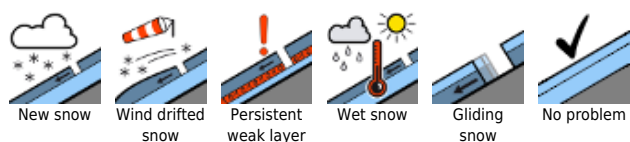
Cloudbanks above summit level will generate diffuse light on Tuesday. Some intermittent rainfall is anticipated during the night. Light southerly winds. Warmer and moister than in recent days. At 2000 m: up to 3 degrees

On Wednesday, heavy cloud cover and slackening precipitation will impede visibility to start with. The higher peaks will get a snow dusting. During the course of the day, the clouds will disperse, sunshine will follow in the afternoon. The NW winds will be blowing at 40-60 km/hr. Temperature at 2000 m: 0 degrees.

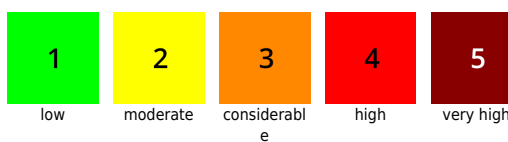
Outlook

No significant change is expected.

Avalanche problems



Danger ratings



Expositions



15.03.2022

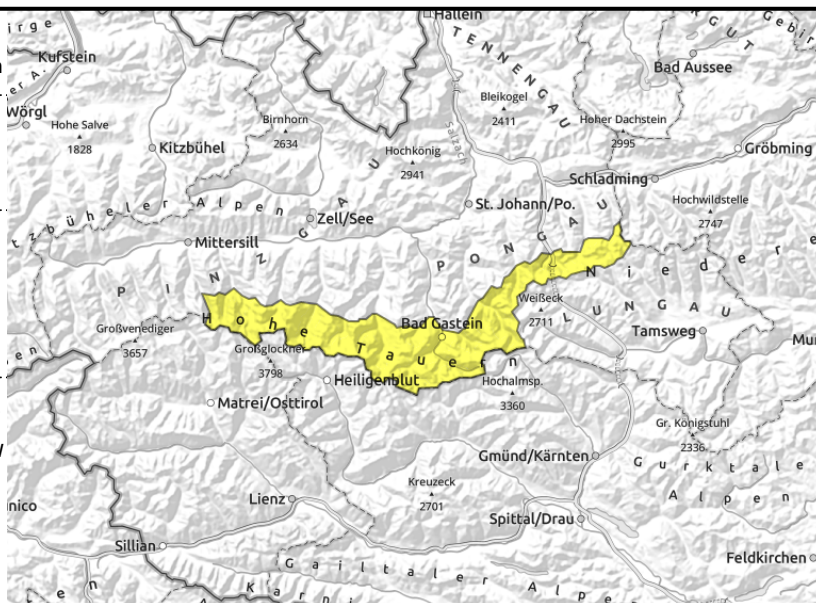
**Niedere Tauern Alpenhauptkamm, Goldberggruppe
Alpenhauptkamm, Glocknergruppe Alpenhauptkamm**



5-15 cm thick drifts from weekend foehn wind, some hard; primary risk: being swept along, falling; above 2200m



moist slides, medium wet-snow avalanches, isolated glide-snow avalanches, medium-to-large, below 2200m



Moderate wet-snow problem - Heed foehn-induced drifts in high alpine regions

Avalanche danger due to warmth and foehn-induced drifts from the weekend: MODERATE.

Wet-snow problem below 2200m: main problem is warmth and diffuse solar radiation. Thus, in steep terrain, moist-snow slides (natural or skier-caused) are possible. Also in extremely steep, rocky terrain, medium-sized wet-snow avalanches can trigger. Also glide-snow avalanches are becoming more active. Isolated releases are possible on extremely steep grass-covered slopes, can become medium sized, in isolated cases large sized.

Persistent weak layer above 2200 m: where the foehn winds was blowing on the weekend (signs are easily recognizable) on shady leeward slopes there are snowdrift accumulations which can be triggered by large additional loading above 2000 m on W/N/E facing slopes. Potential avalanches are generally small sized, the risk of being swept along and falling is thereby greater, but in isolated cases there could be enough snow released to get buried in.

Snowpack structure

The first warm day after a night of overcast skies. The surfaces are becoming soften and moister, and the moisture seeps deeper into the snowpack, particularly on sunny slopes up to 2500m, on shady slopes up to 2000 m

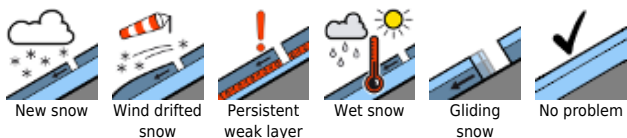
The weekend foehn winds have left behind varyingly large snowdrifts on leeward slopes in north-facing terrain and in bowls. These are often hard, but often triggerable because the layers were deposited atop surface hoar and faceted crystals. Size and depth are not great. The triggerable layers are generally 5-15 cm thick. Apart from wind impact, there is also faceted powder on shady slopes at high altitudes.

Inside the old snowpack there are soft, faceted layers (persistent weak layer). These are currently unlikely to trigger.

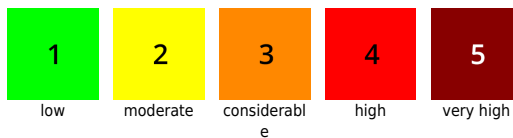
Weather

Cloudbanks above summit level will generate diffuse light on Tuesday. Some intermittent rainfall is anticipated during the night. Light southerly winds (40-60 km/hr). Warmer and moister than in recent days. At 2000 m: 6 degrees; at 3000 m: -3 degrees.

Avalanche problems



Danger ratings



Expositions



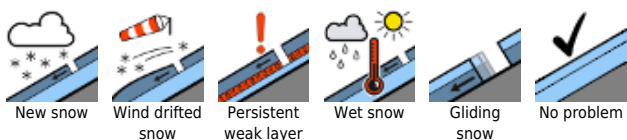
15.03.2022

On Wednesday, heavy cloud cover and slackening precipitation will impede visibility to start with. The higher peaks will get a snow dusting (5 cm above 2000m). During the course of the day, the clouds will disperse, sunshine will follow in the afternoon. The NW winds will be blowing at 40-60 km/hr. Temperature at 2000 m: 0 degrees; at 3000 m: -6 degrees.

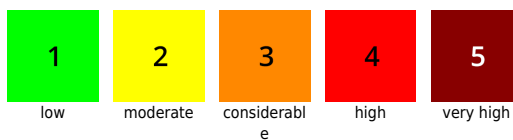
Outlook

Wet-snow problem will persist. Snowdrift problem will recede.

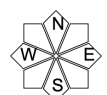
Avalanche problems



Danger ratings



Expositions



15.03.2022

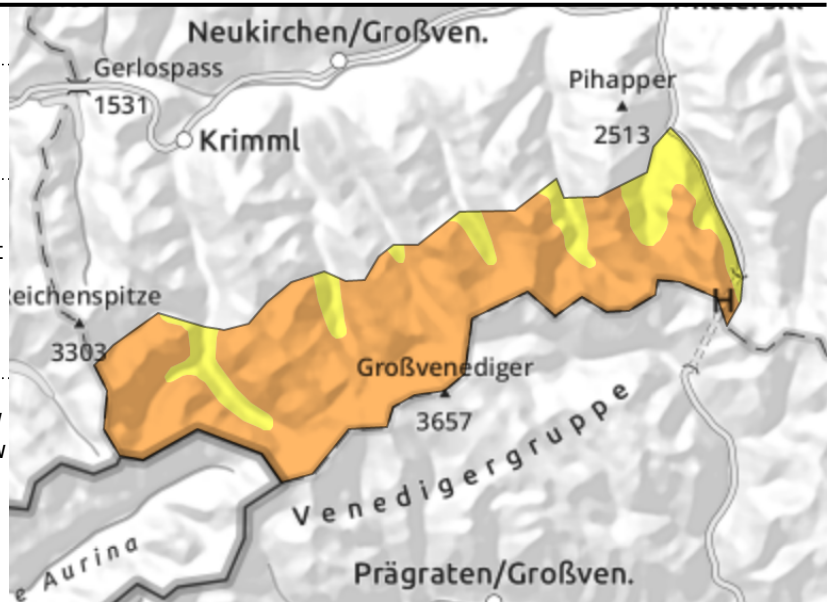
Großvenedigergruppe Alpenhauptkamm



10-20 cm of snowdrifts on north-facing slopes from recent foehn, hard but triggerable, remote triggerings possible, above 2500m



moist slides, medium wet-snow avalanches, isolated glide-snow avalanches, medium-to-large, below 2200m



Wet snow problem up to 2200m - Snowdrift problem above 2500m

Avalanche danger below 2500m is MODERATE, above that altitude danger is CONSIDERABLE. In steep terrain, moist-snow slides (natural or skier-caused) are possible. Also in extremely steep, rocky terrain, medium-sized wet-snow avalanches can trigger. Also glide-snow avalanches are becoming more active. Isolated releases are possible on extremely steep grass-covered slopes, can become medium sized, in isolated cases large sized.

Persistent weak layer above 2200 m: where the foehn winds was blowing on the weekend (signs are easily recognizable) on shady leeward slopes there are snowdrift accumulations which can be triggered by large additional loading above 2000 m on W/N/E facing slopes. Potential avalanches are generally small sized, the risk of being swept along and falling is thereby greater, but in isolated cases there could be enough snow released to get buried in.

Snowpack structure

The first warm day after a night of overcast skies. The surfaces are becoming soften and moister, and the moisture seeps deeper into the snowpack, particularly on sunny slopes up to 2500m, on shady slopes up to 2000 m

The weekend foehn winds have left behind varyingly large snowdrifts on leeward slopes in north-facing terrain and in bowls. These are often hard, but often triggerable because the layers were deposited atop surface hoar and faceted crystals. Size and depth are not great. The triggerable layers are generally 5-15 cm thick.

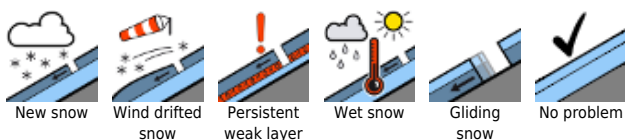
Apart from wind impact there is stable powder on shady slopes, lying atop compact old snow. Inside the old snowpack there are soft, faceted layers (persistent weak layer). These are currently unlikely to trigger.

Weather

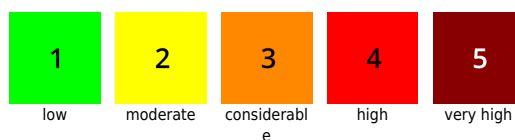
Cloudbanks above summit level will generate diffuse light on Tuesday. Some intermittent rainfall is anticipated during the night. Light southerly winds (40-60 km/hr). Warmer and moister than in recent days. At 2000 m: 6 degrees; at 3000 m: -3 degrees.

On Wednesday, heavy cloud cover and slackening precipitation will impede visibility to start with. The higher peaks will get a snow dusting (5 cm above 2000m). During the course of the day, the clouds

Avalanche problems



Danger ratings



Expositions



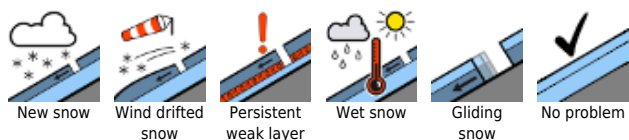
15.03.2022

will disperse, sunshine will follow in the afternoon. The NW winds will be blowing at 40-60 km/hr.
Temperature at 2000 m: 0 degrees; at 3000 m: -6 degrees.

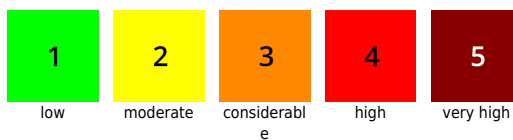
Outlook

Wet-snow problem will persist. Snowdrift problem will recede.

Avalanche problems



Danger ratings

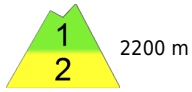


Expositions



15.03.2022

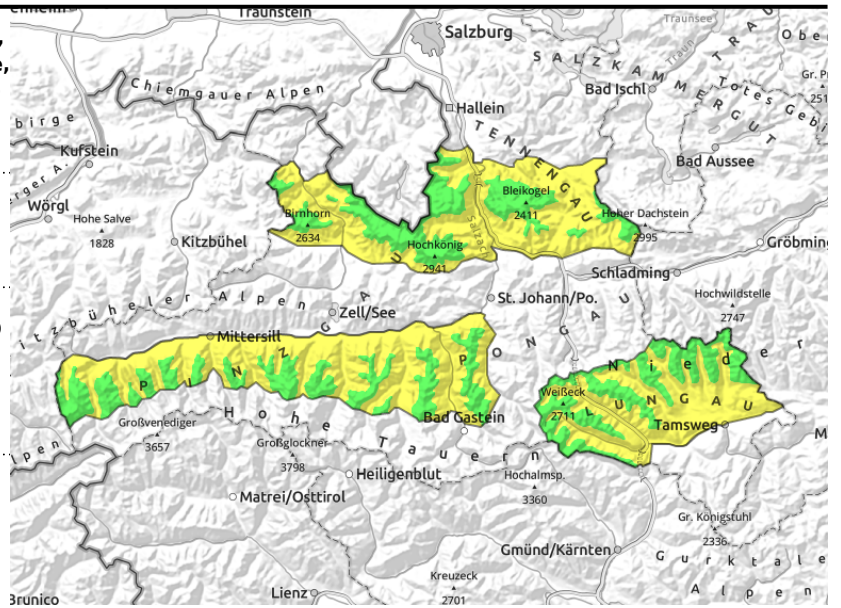
Loferer und Leoganger Steinberge, Steinernes Meer, Hochkönig, Hagengebirge, Göllstock, Tennengebirge, Gosaukamm, Goldberggruppe Nord, Glocknergruppe Nord, Großvenedigergruppe Nord, Ankogelgruppe, Muhr, Niedere Tauern Süd



superficial moist-snow slides to medium-sized wet-snow avalanches; very steep terrain below 2200m



isolated glide-snow avalanches on extremely steep grass-covered slopes; heed glide cracks; medium-to-large



Warmth and diffuse sunshine - Moderate wet-snow problem

Avalanche danger below 2200m is MODERATE, above the altitude danger is LOW.

Main problem: warmth and diffuse solar radiation, making moist-snow slides a problem in steep terrain (triggered naturally or by skiers). Also in extremely steep rocky terrain, medium wet-snow avalanches can release.

Also glide-snow avalanches are becoming more active. Isolated releases are possible in extremely steep grass-covered terrain. They can be medium sized, sometimes large sized.

Secondary theme: very few danger zones in shallow-snow transitions in shady steep terrain (persistent weak layer), where large additional loading can trigger (seldom) a slab which can grow to medium size.

Snowpack structure

The first warm day after a night of overcast skies. The surfaces are becoming soften and moister, and the moisture seeps deeper into the snowpack, particularly on sunny slopes up to 2500m, on shady slopes up to 2000 m

The surface of the old snowpack on shady slopes consists of faceted powder at high altitudes. Inside the still compact snowpack there are expansively metamorphosed (faceted) soft layers - i.e. persistent weak layer - but these layer are unlikely to trigger at this time.

Weather

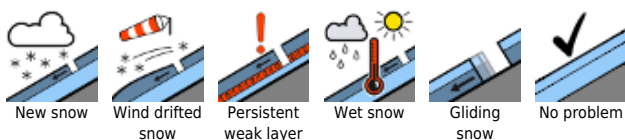
Cloudbanks above summit level will generate diffuse light on Tuesday. Some intermittent rainfall is anticipated during the night. Light southerly winds. Warmer and moister than in recent days. At 2000 m: up to 3 degrees

On Wednesday, heavy cloud cover and slackening precipitation will impede visibility to start with. The higher peaks will get a snow dusting. During the course of the day, the clouds will disperse, sunshine will follow in the afternoon. The NW winds will be blowing at 40-60 km/hr. Temperature at 2000 m: 0 degrees.

Outlook

No significant change is expected.

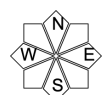
Avalanche problems



Danger ratings



Expositions



15.03.2022

Translated by Jeffrey McCabe, www.creativtrans.com

Avalanche problems



New snow



Wind drifted
snow



Persistent
weak layer



Wet snow



Gliding
snow



No problem

Danger ratings



1

low



2

moderate



3

considerabl
e



4

high



5

very high

Expositions

