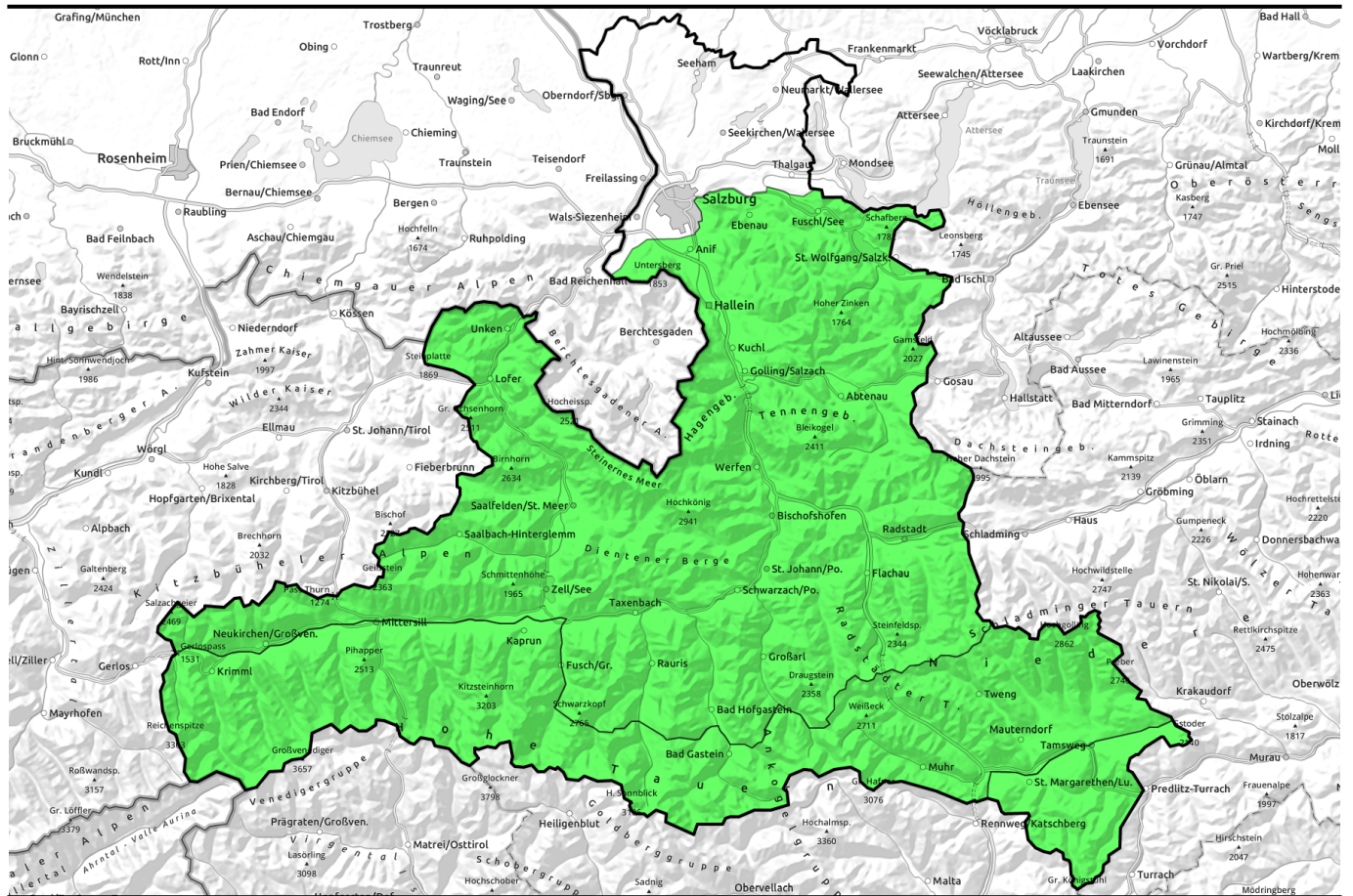


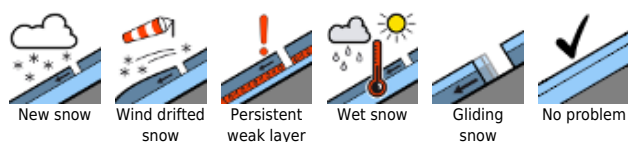
**11.03.2022**



## Favorable situation - firn snow on south-facing slopes is getting better

	Nockberge		
	Großvenedigergruppe Nord, Großvenedigergruppe Alpenhauptkamm, Glocknergruppe Nord, Niedere Tauern Süd, Ankogelgruppe, Muhr, Goldberggruppe Alpenhauptkamm, Glocknergruppe Alpenhauptkamm		
	Untersbergstock, Chiemgauer Alpen, Heutal, Reiteralpe, Pongauer Grasberge, Dientner Grasberge, Kitzbüheler Alpen, Glemmtal, Oberpinzgauer Grasberge, Niedere Tauern Nord, Osterhorngruppe, Gamsfeldgruppe, Goldberggruppe Nord, Tennengebirge, Gosaukamm, Steinernes Meer, Hochkönig, Hagengebirge, Göllstock, Loferer und Leoganger Steinberge, Niedere Tauern Alpenhauptkamm		

### Avalanche problems



### Danger ratings



### Expositions

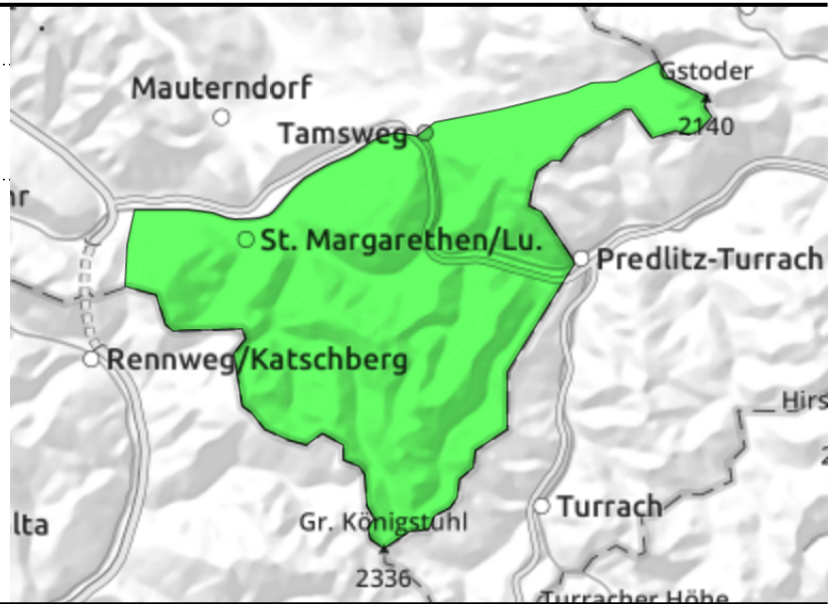


**11.03.2022**

**Nockberge**



very few backcountry danger zones



**Very few danger zones**

Avalanche danger is LOW. Only in few spots can large additional loading trigger a slab avalanche, most likely in shallow-snow transitions from little to much snow on shady, extremely steep slopes, where avalanches can grow to medium size nonetheless.

**Snowpack structure**

The snowpack shows huge effects of storm-strength wintery winds. The snowpack accumulations are well consolidated, often melt-freeze encrusted or hardened. Above the treeline the terrain is windblown, more snow lies in the bowls. Inside the old snowpack are soft layers of expansively metamorphosed (faceted) crystals which are unlikely to trigger except in isolated cases.

**Weather**

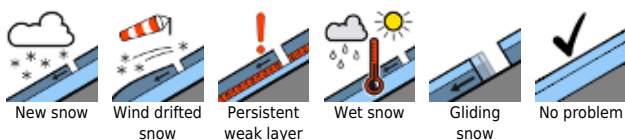
On Thursday night, winds will shift to southeasterly, bringing high-foglike clouds. Friday will begin with gray skies up to 2000-2400m and poor visibility. The clouds will rapidly disperse from E/NE and make room for the sun. At 2000 m: -8 degrees

On Saturday, sunny once again, with some fogbanks clinging to the mountain flanks. Moderate SE winds at 30 km/hr. At 2000 m: -5 degrees.

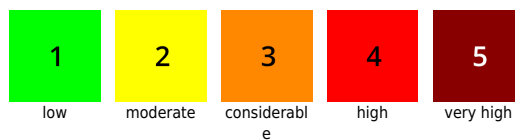
**Outlook**

No significant change is expected.

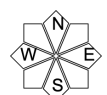
**Avalanche problems**



**Danger ratings**

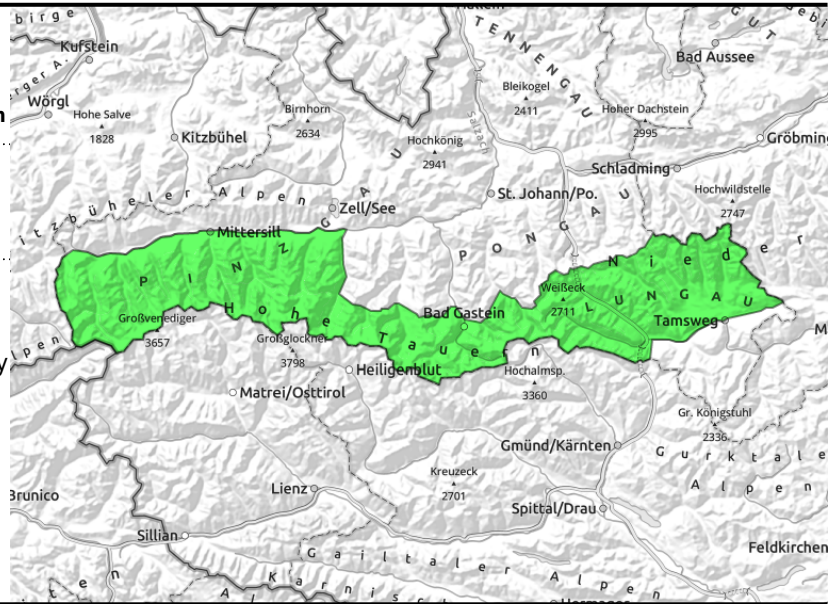


**Expositions**



**11.03.2022**

**Großvenedigergruppe Nord, Großvenedigergruppe Alpenhauptkamm, Glocknergruppe Nord, Niedere Tauern Süd, Ankogelgruppe, Muhr, Goldberggruppe Alpenhauptkamm, Glocknergruppe Alpenhauptkamm**



transitions into gullies and bowls from shallow to deep snow, shallow-snow zones, very steep, mostly shady

### Few danger zones in transitions where the snow is shallow

Avalanche danger is LOW. Only in very few places can large additional loading trigger a slab avalanche, most likely in transitions where snow is shallow, into deeper snow, in shady and extremely steep terrain. Then, avalanches can grow to medium size. Most avalanche prone locations occur in W/N/E aspects distant from ridgelines and in steep gullies.

In high alpine regions (above 2600m) these rare avalanche prone locations (shallow-snow transitions in very steep terrain) cannot be ruled out on E/S facing slopes as well.

Naturally triggered avalanches: extremely isolated small glide-snow avalanches can release. In the afternoon, small moist slides are possible, superficially, both types on extremely steep slopes.

### Snowpack structure

On shady slopes there is old powder atop a compact old snowpack. On sunny slopes the melt-freeze crust in some aspects and gradients (S/SW, 1500-2000m) can bear loads, then softens up during the daytime (the upper 5-10 cm soften).

Hidden inside the old snow are soft layers of expansively metamorphosed (faceted) crystals, but are unlikely to trigger except in isolated cases.

### Weather

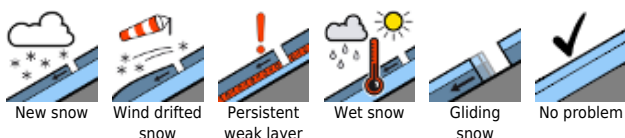
On Friday, brisk SE winds (40 km/hr), some clouds, but otherwise sunny. At 2000 m: -2 degrees; at 3000 m: -5 degrees.

On Saturday, unimpeded sunshine. At high altitudes, SE winds will intensify somewhat, reach 60 km/hr. At 2000 m: -3 degrees; at 3000 m: -6 degrees.

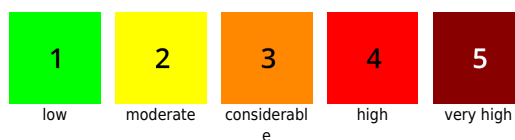
### Outlook

No significant change is expected.

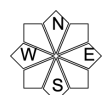
#### Avalanche problems



#### Danger ratings

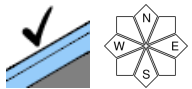
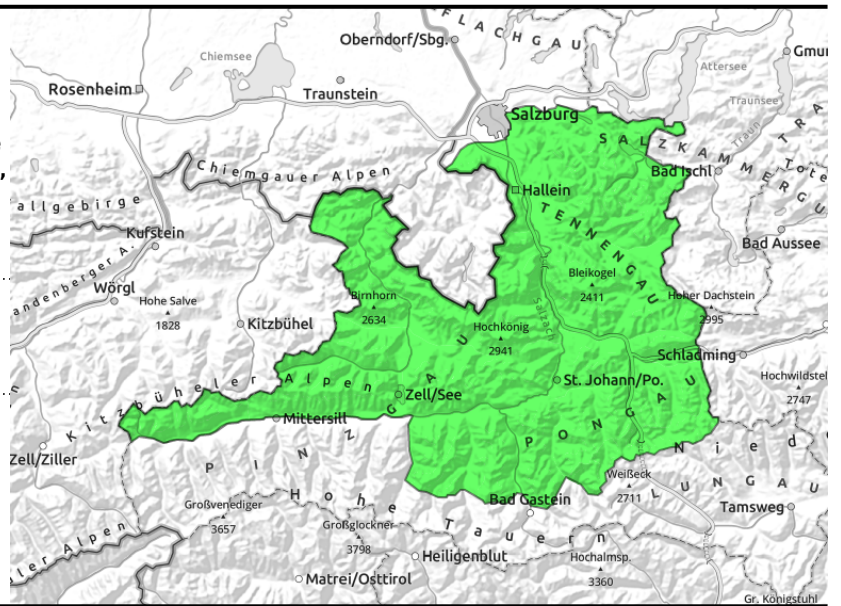


#### Expositions



**11.03.2022**

Untersbergstock, Chiemgauer Alpen, Heutal, Reiteralpe, Pongauer Grasberge, Dientner Grasberge, Kitzbüheler Alpen, Glemmtal, Oberpinzgauer Grasberge, Niedere Tauern Nord, Osterhorngruppe, Gamsfeldgruppe, Goldberggruppe Nord, Tennengebirge, Gosaukamm, Steinernes Meer, Hochkönig, Hagengebirge, Göllstock, Loferer und Leoganger Steinberge, Niedere Tauern Alpenhauptkamm



very few danger zones

## Very few danger zones

Avalanche danger is LOW. Only in few spots can large additional loading trigger a slab avalanche, most likely in shallow-snow transitions from little to much snow on shady, extremely steep slopes, where avalanches can grow to medium size nonetheless.

Naturally triggered avalanches: extremely isolated small glide-snow avalanches can release. In the afternoon, small moist slides are possible, superficially, both types on extremely steep slopes.

## Snowpack structure

On shady slopes there is old powder atop a compact old snowpack. On sunny slopes the melt-freeze crust in some aspects and gradients (S/SW, 1500-2000m) can bear loads, then softens up during the daytime (the upper 5-10 cm soften).

Hidden inside the old snow are soft layers of expansively metamorphosed (faceted) crystals, but are unlikely to trigger except in isolated cases.

## Weather

On Friday, sunny, little wind (in exposed zones SE winds at 30 km/hr). At 2000 m: 0 degrees; at 3000 m: -5 degrees.

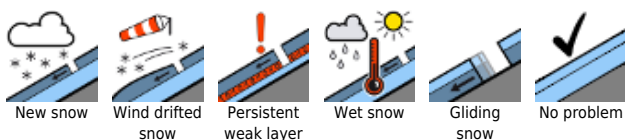
On Saturday, pure sunshine. At 2000 m: 1 degree; at 3000 m: -6 degrees.

## Outlook

No significant change is expected.

Translated by Jeffrey McCabe, [www.creativtrans.com](http://www.creativtrans.com)

### Avalanche problems



### Danger ratings



### Expositions

