

## Favorable situation



Nockberge



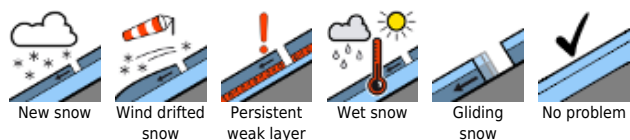
Großvenedigergruppe Nord, Großvenedigergruppe Alpenhauptkamm, Glocknergruppe Nord, Niedere Tauern Süd, Ankogelgruppe, Muhr, Goldberggruppe Alpenhauptkamm, Glocknergruppe Alpenhauptkamm



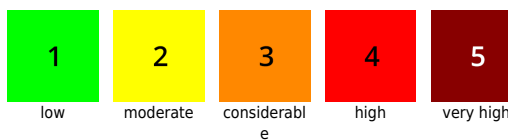
Untersbergstock, Chiemgauer Alpen, Heutal, Reiteralpe, Pongauer Grasberge, Dientner Grasberge, Kitzbüheler Alpen, Glemmtal, Oberpinzgauer Grasberge, Niedere Tauern Nord, Osterhorngruppe, Gamsfeldgruppe, Goldberggruppe Nord, Tennengebirge, Gosaukamm, Steinernes Meer, Hochkönig, Hagengebirge, Göllstock, Loferer und Leoganger Steinberge, Niedere Tauern Alpenhauptkamm



### Avalanche problems



### Danger ratings



### Expositions

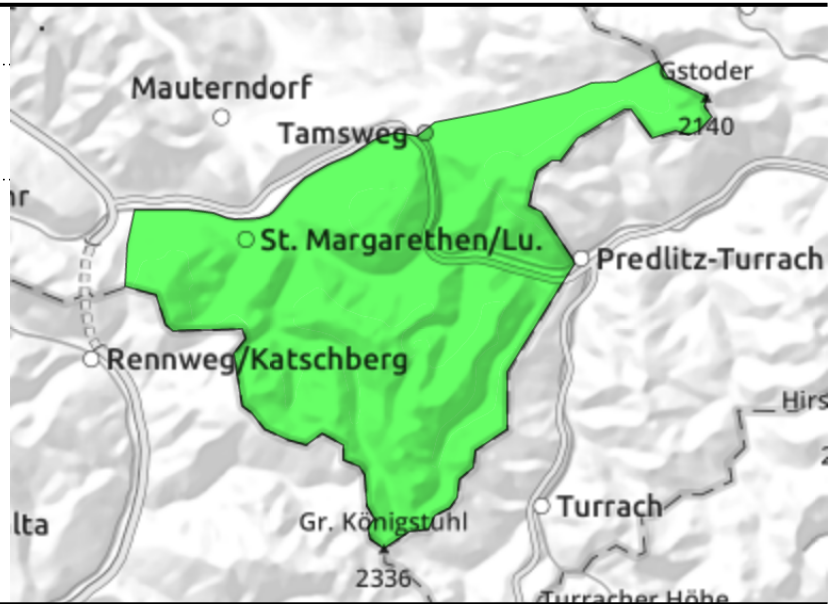


**10.03.2022**

**Nockberge**



very few danger zones



**Very few danger zones**

Avalanche danger is LOW. Only in few spots can large additional loading trigger a slab avalanche, most likely in shallow-snow transitions from little to much snow on shady, extremely steep slopes, where avalanches can grow to medium size nonetheless.

**Snowpack structure**

The snowpack shows massive signs of storm-strength wintery winds. The snowdrift accumulations are well consolidated, the surfaces encrusted or hardened. Above the treeline the terrain is largely windblown, there is more snow in the gullies. Inside the old snow are soft layers of expansively metamorphosed (faceted) crystals, but are unlikely to trigger except in isolated cases.

**Weather**

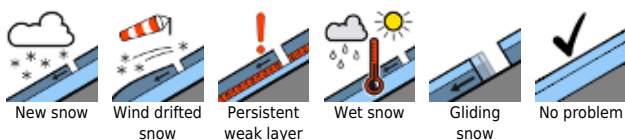
On Thursday, sunny, outstanding visibility, little wind. At 2000 m: -2 degrees.

Winds at night will shift to southeasterly, clouds will move in. On Friday, gray skies up to 2000-2400m initially, with poor visibility. The cloud cover will gradually disperse from E/NE, make room for the sun. At 2000 m: -8 degrees.

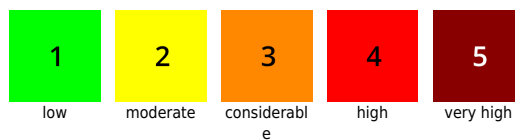
**Outlook**

No significant change is expected.

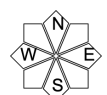
**Avalanche problems**



**Danger ratings**



**Expositions**

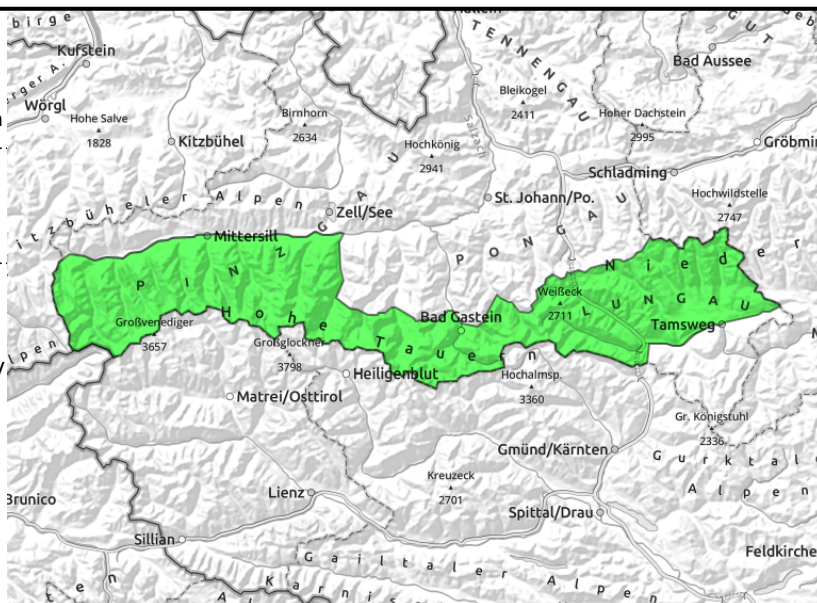


**10.03.2022**

**Großvenedigergruppe Nord, Großvenedigergruppe Alpenhauptkamm, Glocknergruppe Nord, Niedere Tauern Süd, Ankogelgruppe, Muhr, Goldberggruppe Alpenhauptkamm, Glocknergruppe Alpenhauptkamm**



transitions into gullies and bowls from shallow to deep snow, shallow-snow zones, very steep, mostly shady



## Few danger zones in transitions where the snow is shallow

Avalanche danger is LOW. Only in very few places can large additional loading trigger a slab avalanche, most likely in transitions where snow is shallow, into deeper snow, in shady and extremely steep terrain. Then, avalanches can grow to medium size. Most avalanche prone locations occur in W/N/E aspects distant from ridgelines and in steep gullies.

In high alpine regions (above 2600m) these rare avalanche prone locations (shallow-snow transitions in very steep terrain) cannot be ruled out on E/S facing slopes as well.

### Snowpack structure

On shady slopes there is old powder atop a compact old snowpack. On sunny slopes there is a bit of firn snow, the uppermost centimetres are becoming sticky.

Hidden inside the old snow are soft layers of expansively metamorphosed (faceted) crystals, but are unlikely to trigger except in isolated cases.

### Weather

On Thursday sunny, outstanding visibility, little wind. At 2000 m: -2 degrees; at 3000 m: -7 degrees.

On Friday, brisk SE winds in some places, more clouds in Pongau and Lungau, elsewhere still very sunny. At 2000 m: -2 degrees; at 3000 m: -5 degrees.

### Outlook

No significant change is expected.

#### Avalanche problems



New snow



Wind drifted snow



Persistent weak layer



Wet snow



Gliding snow



No problem

#### Danger ratings



1

low



2

moderate



3

considerable



4

high



5

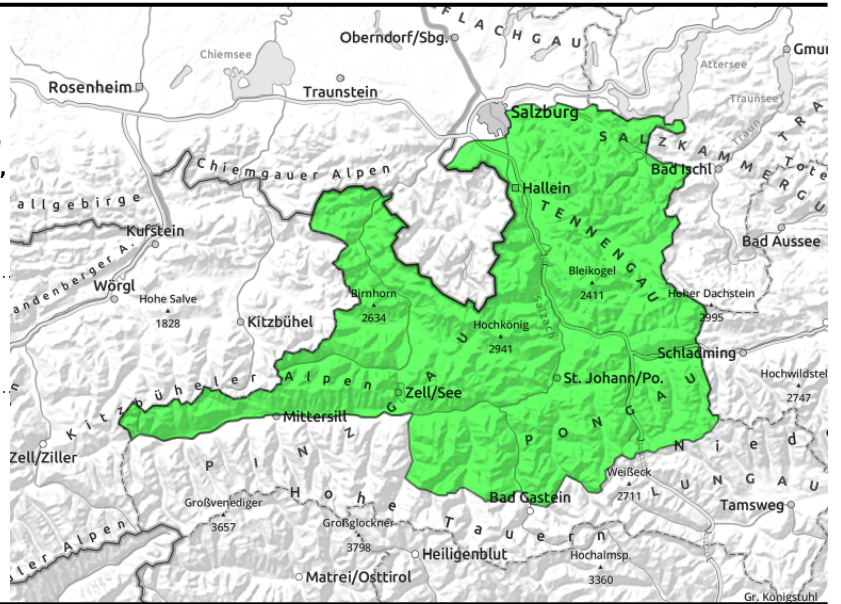
very high

#### Expositions



**10.03.2022**

**Untersbergstock, Chiemgauer Alpen, Heutal, Reiteralpe, Pongauer Grasberge, Dientner Grasberge, Kitzbüheler Alpen, Glemmtal, Oberpinzgauer Grasberge, Niedere Tauern Nord, Osterhorngruppe, Gamsfeldgruppe, Goldberggruppe Nord, Tennengebirge, Gosaukamm, Steinernes Meer, Hochkönig, Hagengebirge, Göllstock, Loferer und Leoganger Steinberge, Niedere Tauern Alpenhauptkamm**



very few avalanche prone locations

## Hardly any danger zones

Avalanche danger is LOW. Only in very few places can large additional loading trigger a slab avalanche, most likely in transitions where snow is shallow, into deeper snow, in shady and extremely steep terrain. Then, avalanches can grow to medium size. Most avalanche prone locations occur in NW/N/E aspects distant from ridgelines and in steep gullies.

## Snowpack structure

On shady slopes there is old powder atop a compact old snowpack. On sunny slopes the snow is turning slightly to firn, the uppermost centimetres are getting sticky. Hidden inside the old snow are soft layers of expansively metamorphosed (faceted) crystals, but are unlikely to trigger except in isolated cases.

## Weather

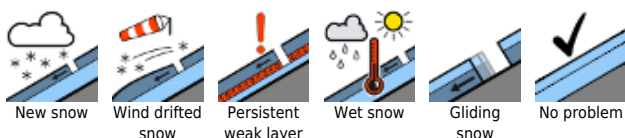
On Thursday sunny, outstanding visibility, little wind. At 2000 m: -2 degrees.  
On Friday, brisk SE winds in some places, more clouds in Pongau and Lungau, elsewhere still very sunny. At 2000 m: 0 degrees.

## Outlook

No significant change is expected.

Translated by Jeffrey McCabe, [www.creativtrans.com](http://www.creativtrans.com)

### Avalanche problems



### Danger ratings



### Expositions

