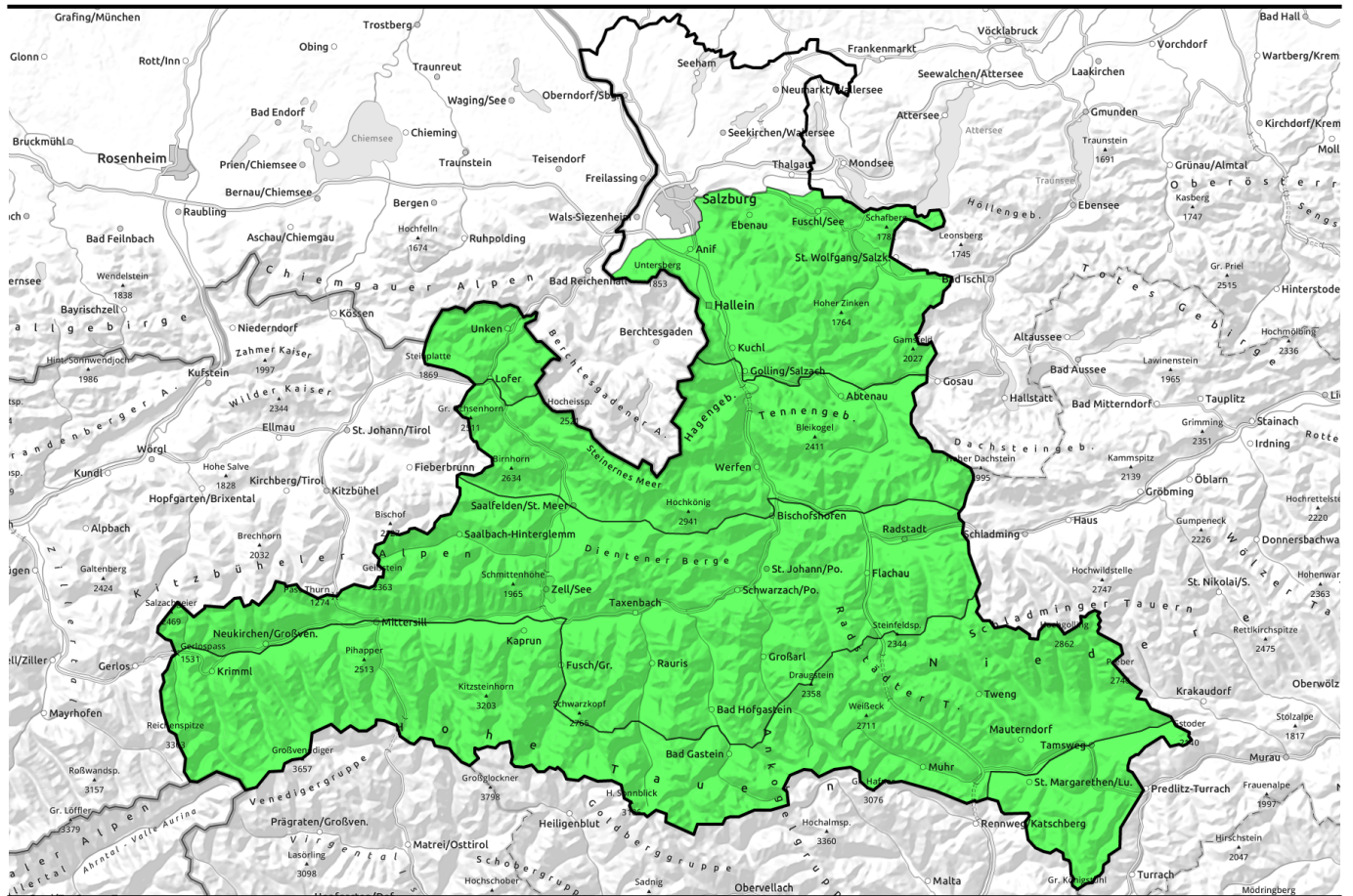



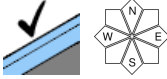

09.03.2022



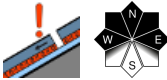

Favorable situation

- 

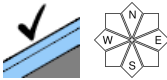
Nockberge


- 

Steirnes Meer, Hochkönig, Hagengebirge, Göllstock, Loferer und Leoganger Steinberge, Großvenedigergruppe Nord, Großvenedigergruppe Alpenhauptkamm, Glocknergruppe Nord, Tennengebirge, Gosaukamm, Niedere Tauern Süd, Ankogelgruppe, Muhr, Goldberggruppe Alpenhauptkamm, Glocknergruppe Alpenhauptkamm, Niedere Tauern Alpenhauptkamm


- 

Untersbergstock, Chiemgauer Alpen, Heutal, Reiteralpe, Pongauer Grasberge, Dientner Grasberge, Kitzbüheler Alpen, Glemmtal, Oberpinzgauer Grasberge, Niedere Tauern Nord, Osterhorngruppe, Gamsfeldgruppe, Goldberggruppe Nord



Avalanche problems



Danger ratings



Expositions

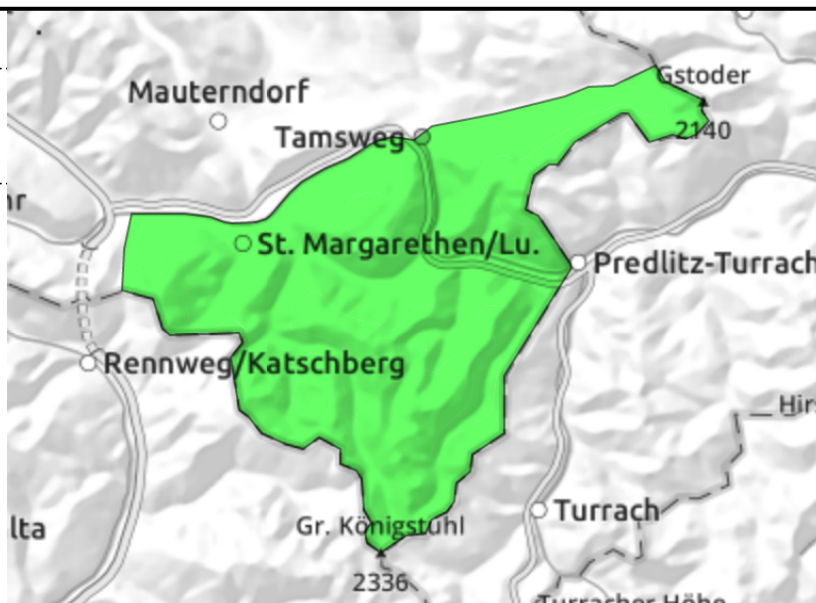


09.03.2022

Nockberge



very few danger zones in outlying terrain



Very few danger zones

Avalanche danger is LOW. Only in few spots can large additional loading trigger a slab avalanche, most likely in shallow-snow transitions from little to much snow on shady, extremely steep slopes, where avalanches can grow to medium size nonetheless.

Snowpack structure

The snowpack shows massive signs of storm-strength wintery winds. The snowdrift accumulations are well consolidated, the surfaces encrusted or hardened. Above the treeline the terrain is largely windblown, there is more snow in the bowls. Inside the old snow are soft layers of expansively metamorphosed (faceted) crystals, but are unlikely to trigger except in isolated cases.

Weather

Nights of clear skies. Sunshine during the daytime.

On Wednesday, sunny and excellent visibility. The northerly winds will reach 40 km/hr. At 2000 m at midday: -4 degrees.

On Thursday, sunny, outstanding visibility, little wind. At 2000 m: -3 degrees.

Outlook

No significant change is expected. The steep south-facing slopes will be moistened for a few hours.

Avalanche problems



Danger ratings

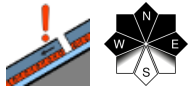
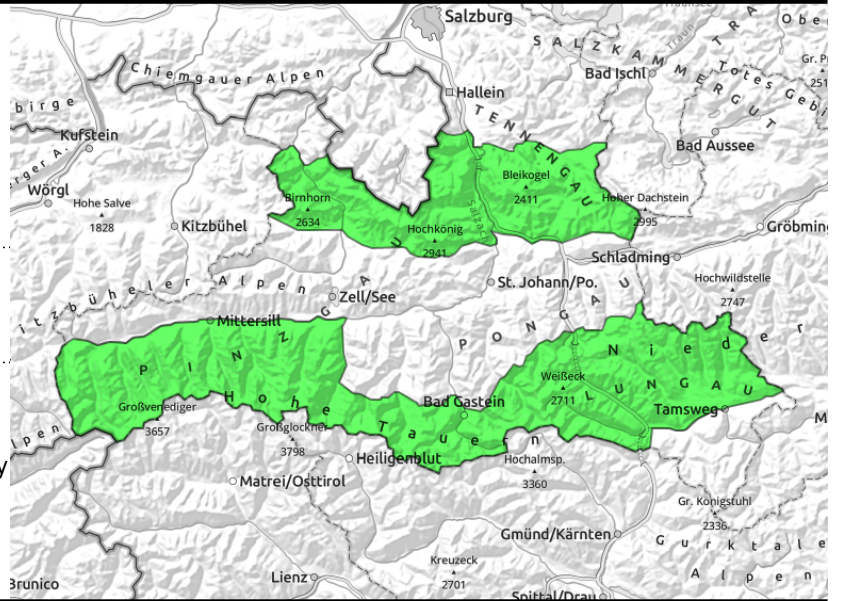


Expositions



09.03.2022

Steinernes Meer, Hochkönig, Hagengebirge, Göllstock, Loferer und Leoganger Steinberge, Großvenedigergruppe Nord, Großvenedigergruppe Alpenhauptkamm, Glocknergruppe Nord, Tennengebirge, Gosaukamm, Niedere Tauern Süd, Ankogelgruppe, Muhr, Goldberggruppe Alpenhauptkamm, Glocknergruppe Alpenhauptkamm, Niedere Tauern Alpenhauptkamm



transitions into gullies and bowls from shallow to deep snow, shallow-snow zones, very steep, mostly shady

Rare danger zones in transitions where the snow is shallow

The situation is unchanged: avalanche danger is LOW. Only in very few places can large additional loading trigger a slab avalanche, most likely in transitions where snow is shallow, into deeper snow, in shady and extremely steep terrain. Then, avalanches can grow to medium size. Most avalanche prone locations occur in W/N/E aspects distant from ridgelines and in steep gullies.

In high alpine regions (above 2600m) these rare avalanche prone locations (shallow-snow transitions in very steep terrain) cannot be ruled out on south facing slopes as well.

Snowpack structure

On shady slopes there is old powder atop a compact old snowpack. On sunny slopes there is a bit of firn snow, the uppermost centimetres are becoming sticky.

Hidden inside the old snow are soft layers of expansively metamorphosed (faceted) crystals, but are unlikely to trigger except in isolated cases.

Weather

Nights of clear skies. Sunshine during the daytime.

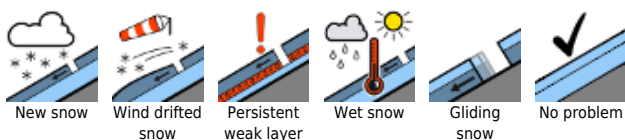
On Wednesday, sunny and excellent visibility. The northerly winds will reach 40 km/hr. At 2000 m at midday: -4 degrees, at 3000 m: -11 degrees.

On Thursday, sunny, outstanding visibility, little wind. At 2000 m: -3 degrees; at 3000 m: -7 degrees.

Outlook

No significant change is expected. The steep south-facing slopes will be moistened for a few hours.

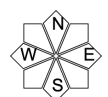
Avalanche problems



Danger ratings

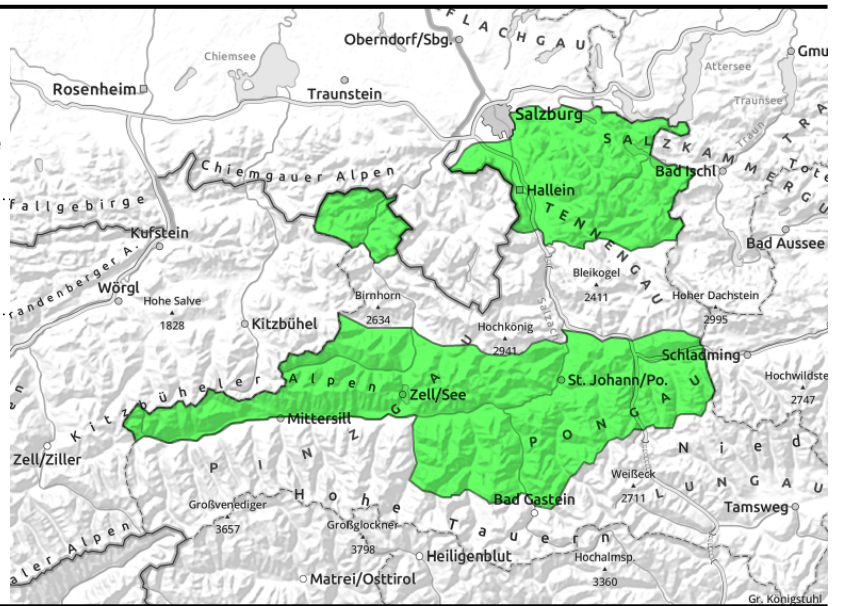


Expositions



09.03.2022

Untersbergstock, Chiemgauer Alpen, Heutal, Reiteralpe, Pongauer Grasberge, Dientner Grasberge, Kitzbüheler Alpen, Glemmtal, Oberpinzgauer Grasberge, Niedere Tauern Nord, Osterhorngruppe, Gamsfeldgruppe, Goldberggruppe Nord



very few avalanche prone locations

Hardly any danger zones

Avalanche danger is LOW. Only in very few places can large additional loading trigger a slab avalanche, most likely in transitions where snow is shallow, into deeper snow, in shady and extremely steep terrain. Then, avalanches can grow to medium size. Most avalanche prone locations occur in W/N/E aspects distant from ridgelines and in steep gullies.

Snowpack structure

On shady slopes there is old powder atop a compact old snowpack. On sunny slopes the snow is turning slightly to firn, the uppermost centimetres are getting sticky. Hidden inside the old snow are soft layers of expansively metamorphosed (faceted) crystals, but are unlikely to trigger except in isolated cases.

Weather

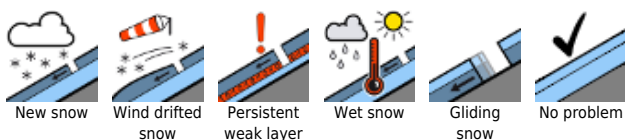
Nights of clear skies. Sunshine during the daytime.
 On Wednesday, sunny and excellent visibility. The northerly winds will reach 40 km/hr. At 2000 m at midday: -4 degrees.
 On Thursday, sunny, outstanding visibility, little wind. At 2000 m: -3 degrees.

Outlook

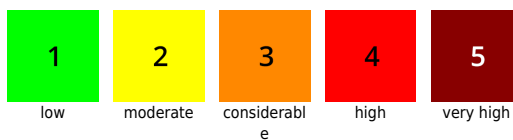
No significant change is expected. The steep south-facing slopes will be moistened for a few hours.

Translated by Jeffrey McCabe, www.creativtrans.com

Avalanche problems



Danger ratings



Expositions

