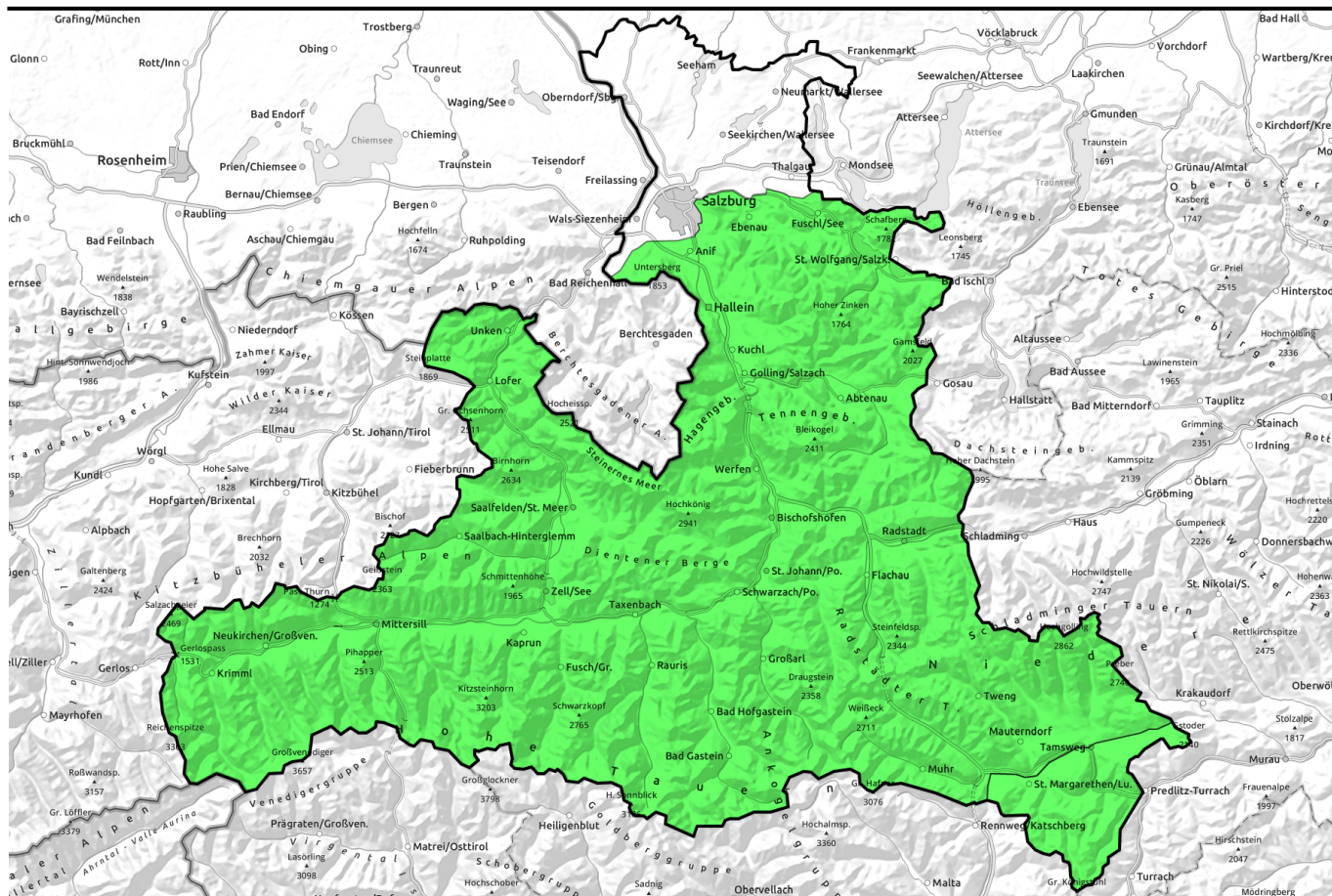


08.03.2022



Favorable situation continues: few danger zones, persistent weak layer



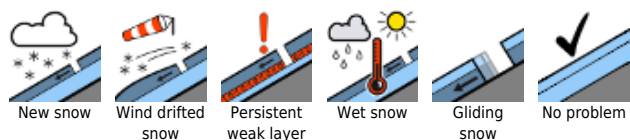
Nockberge



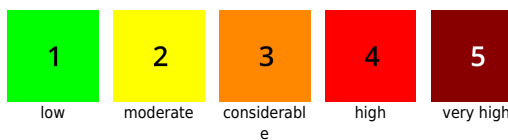
Osterhorngruppe, Gamsfeldgruppe, Untersbergstock, Steinernes Meer, Hochkönig, Hagengebirge, Göllstock, Chiemgauer Alpen, Heutal, Reitalpe, Loferer und Leoganger Steinberge, Kitzbüheler Alpen, Glemmtal, Oberpinzgauer Grasberge, Großvenedigergruppe Nord, Großvenedigergruppe Alpenhauptkamm, Glocknergruppe Nord, Tennengebirge, Gosaukamm, Pongauer Grasberge, Niedere Tauern Nord, Niedere Tauern Alpenhauptkamm, Niedere Tauern Süd, Ankogelgruppe, Muhr, Goldberggruppe Nord, Dientner Grasberge, Goldberggruppe Alpenhauptkamm, Glocknergruppe Alpenhauptkamm



Avalanche problems



Danger ratings

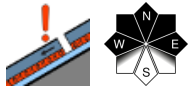


Expositions

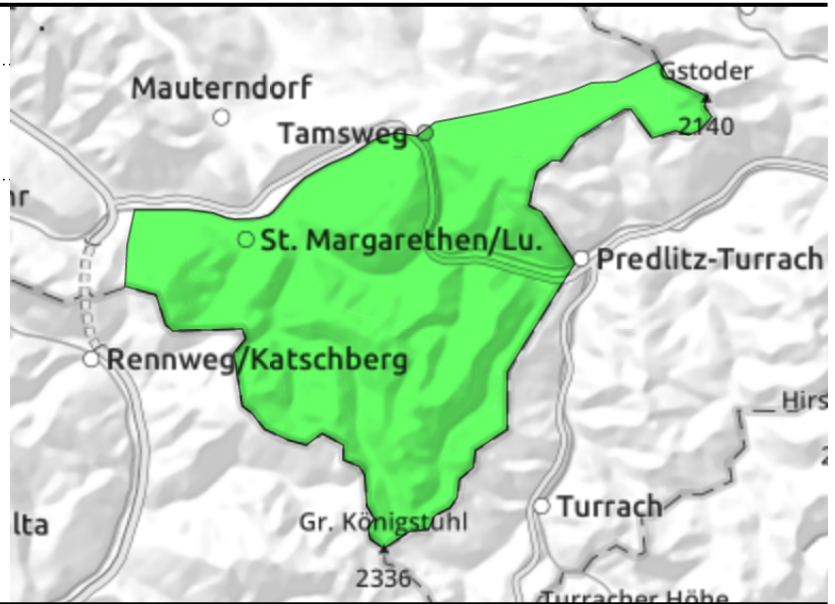


08.03.2022

Nockberge



very few danger zones - persistent weak layer



Few danger zones - local persistent weak layer locally

Unchanged: hardened surfaces dominate. Avalanche danger is still LOW. Only in few spots can large additional loading trigger a slab avalanche, most likely in shallow-snow transitions from little to much snow on shady, extremely steep slopes or high-alpine terrain, where avalanches can grow to medium size nonetheless.

Snowpack structure

The snowpack shows massive signs of storm-strength wintery winds. The snowdrift accumulations are well consolidated, the surfaces encrusted or hardened. Above the treeline the terrain is largely windblown, there is more snow in the gullies. Inside the old snow are soft layers of expansively metamorphosed (faceted) crystals, but are unlikely to trigger except in isolated cases.

Weather

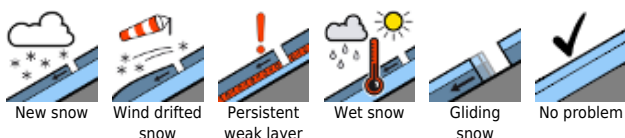
On Tuesday, sunshine from the start, outstanding visibility. Not much wind. Temperatures slightly higher. At midday at 2000 m: -10 to -5 degrees.

On Wednesday, sunny mountain weather, excellent visibility. The northerly wind will reach 40 km/hr. At 2000 m at midday: -4 degrees.

Outlook

No significant change is expected. The steep south-facing slopes will be moistened for a few hours.

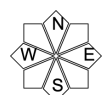
Avalanche problems



Danger ratings

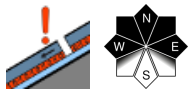
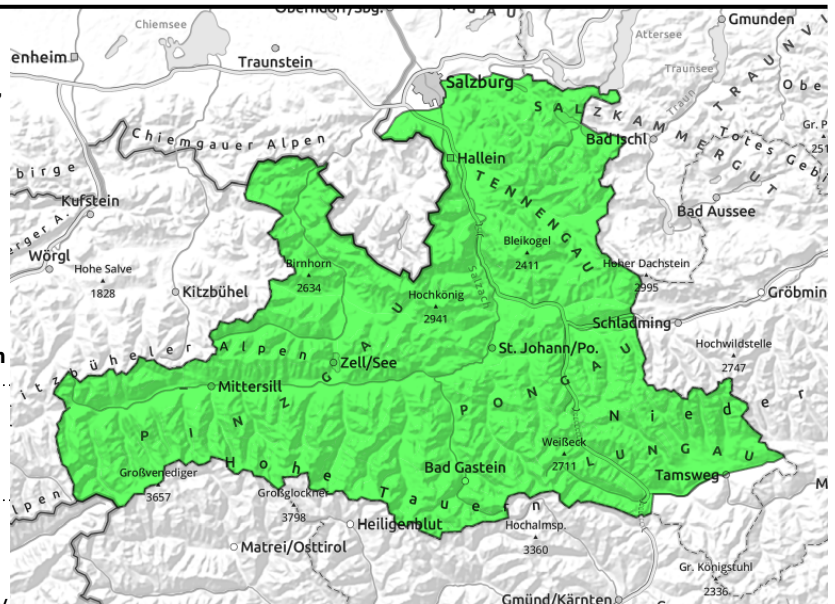


Expositions



08.03.2022

Osterhorngruppe, Gamsfeldgruppe, Untersbergstock, Steinernes Meer, Hochkönig, Hagengebirge, Göllstock, Chiemgauer Alpen, Heutal, Reiteralpe, Loferer und Leoganger Steinberge, Kitzbüheler Alpen, Glemmtal, Oberpinzgauer Grasberge, Großvenedigergruppe Nord, Großvenedigergruppe Alpenhauptkamm, Glocknergruppe Nord, Tennengebirge, Gosaukamm, Pongauer Grasberge, Niedere Tauern Nord, Niedere Tauern Alpenhauptkamm, Niedere Tauern Süd, Ankogelgruppe, Muhr, Goldberggruppe Nord, Dientner Grasberge, Goldberggruppe Alpenhauptkamm, Glocknergruppe Alpenhauptkamm



transitions into gullies and bowls from shallow to deep snow, shallow-snow zones, very steep, mostly shady

Few danger zones in transitions where the snow is shallow

The situation is unchanged: avalanche danger is LOW. Only in very few places can large additional loading trigger a slab avalanche, most likely in transitions where snow is shallow, into deeper snow, in shady and extremely steep terrain. Then, avalanches can grow to medium size. Most avalanche prone locations occur in W/N/E aspects distant from ridgelines and in steep gullies.

In **high alpine regions** (above 2600m) these rare avalanche prone locations (shallow-snow transitions in very steep terrain) cannot be ruled out **on E/S facing slopes as well**.

Snowpack structure

On shady slopes there is old powder atop a compact old snowpack. On sunny slopes there is melt-freeze crusting. It is still too cold and too dry for firm snow.

Hidden inside the old snow are soft layers of expansively metamorphosed (faceted) crystals, but are unlikely to trigger.

Weather

On Tuesday, sunshine from the start, outstanding visibility. Not much wind. Temperatures slightly higher. At midday at 2000 m: -10 to -5 degrees; at 3000 m: -13 to -10 degrees.

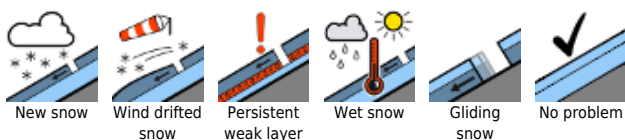
On Wednesday, sunny mountain weather, excellent visibility. In the Tauern at high altitudes the N/NW winds will reach 40 km/hr, at lower altitudes the winds will not disturb. At 2000 m at midday: -4 degrees; at 3000 m: -11 degrees.

Outlook

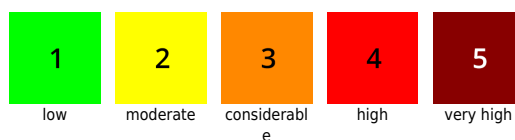
No significant change is expected. The steep south-facing slopes will be moistened for a few hours.

Translated by Jeffrey McCabe, www.creativtrans.com

Avalanche problems



Danger ratings



Expositions

