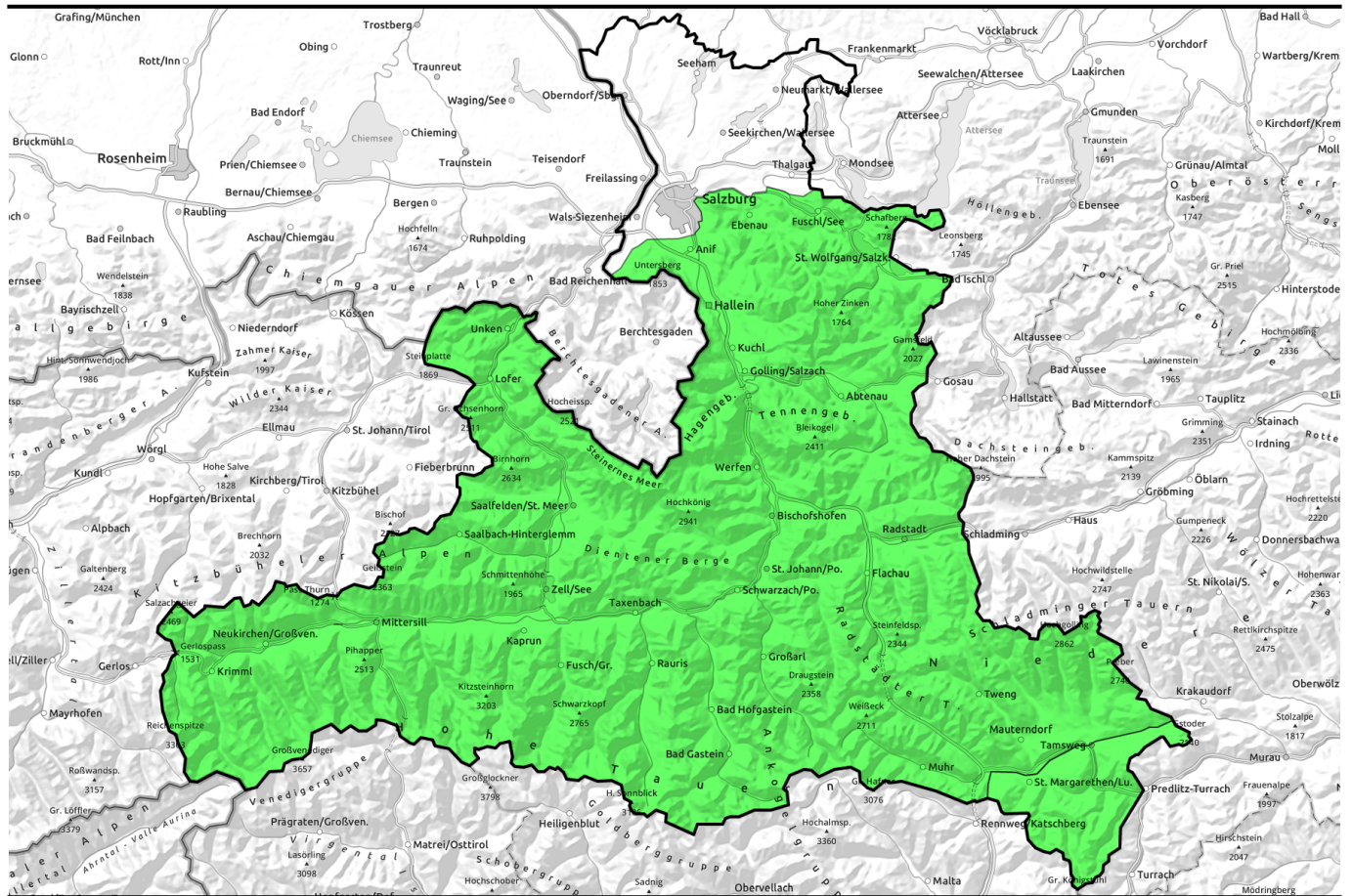


07.03.2022



Favorable situation continues: few danger zones, persistent weak layer



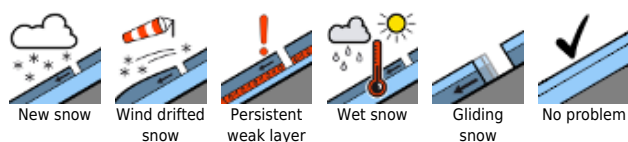
Osterhorngruppe, Gamsfeldgruppe, Untersbergstock, Tennengebirge, Gosaukamm, Steinernes Meer, Hochkönig, Hagengebirge, Göllstock, Chiemgauer Alpen, Heutal, Reiteralpe, Loferer und Leoganger Steinberge, Kitzbüheler Alpen, Glemmtal, Oberpinzgauer Grasberge, Großvenedigergruppe Nord, Dientner Grasberge, Pongauer Grasberge, Niedere Tauern Nord, Niedere Tauern Süd, Niedere Tauern Alpenhauptkamm, Ankogelgruppe, Muhr, Goldberggruppe Nord, Goldberggruppe Alpenhauptkamm, Glocknergruppe Nord, Glocknergruppe Alpenhauptkamm, Großvenedigergruppe Alpenhauptkamm



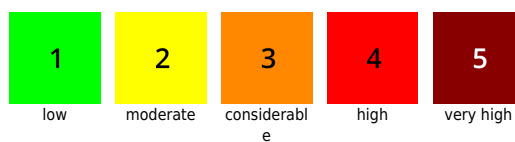
Nockberge



Avalanche problems



Danger ratings

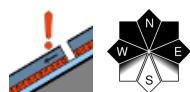
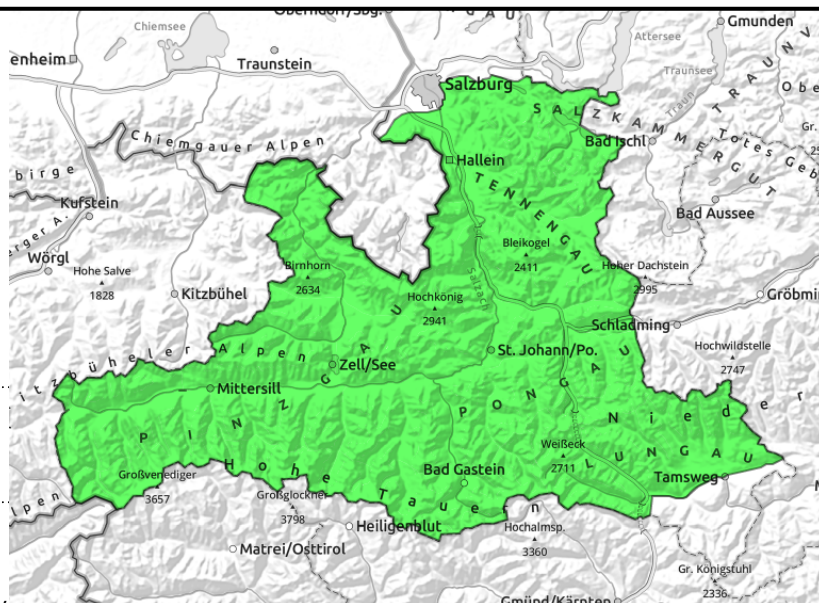


Expositions



07.03.2022

Osterhorngruppe, Gamsfeldgruppe, Untersbergstock, Tennengebirge, Gosaukamm, Steinernes Meer, Hochkönig, Hagengebirge, Göllstock, Chiemgauer Alpen, Heutal, Reiteralpe, Loferer und Leoganger Steinberge, Kitzbüheler Alpen, Glemmtal, Oberpinzgauer Grasberge, Großvenedigergruppe Nord, Dientner Grasberge, Pongauer Grasberge, Niedere Tauern Nord, Niedere Tauern Süd, Niedere Tauern Alpenhauptkamm, Ankogelgruppe, Muhr, Goldberggruppe Nord, Goldberggruppe Alpenhauptkamm, Glocknergruppe Nord, Glocknergruppe Alpenhauptkamm, Großvenedigergruppe Alpenhauptkamm



transitions in gullies and in general from shallow to more snow, shallow-snow zones, very steep, mostly shady

Few danger zones in shallow-snow transitions

Avalanche danger is still LOW. The snowpack is quite stable, only in few spots can large additional loading trigger a slab avalanche, most likely in shallow-snow transitions from little to much snow on shady, extremely steep slopes or high-alpine terrain, where avalanches can grow to medium size nonetheless. Most danger zones occur in W/N/E aspects distant from ridges and in steep gullies. In high alpine terrain (above 2600m) such danger zones cannot be ruled out also in E/S aspects (in very steep shallow-snow transitions).

Snowpack structure

On shady slopes there is old powder atop a compact old snowpack surface. On sunny slopes there are melt-freeze crusts, it is still too cold for real firn, and too dry. Hidden expansively metamorphosed (faceted) layers beneath the melt-freeze crusts threaten (persistent weak layer above 1800m). These layers are currently unlikely to trigger.

Weather

On Monday, often limited visibility due to low lying clouds in the Northern Alps (up to 2000m). From Pinzgau Grassy Mountains, along the Tauern as far as the Nockberge, visibility will rapidly improve, it will often be sunny even in the morning. The northerly winds will intensify, reach 30-50 km/hr in high altitude Tauern regions. At 2000 m: -12 to -8 degrees; at 3000 m: -13 degrees.

On Tuesday, outstanding visibility right from the start, and sunshine. Winds will not disturb. Temperatures slightly higher. At midday at 2000 m: -6 degrees; at 3000 m: -12 degrees.

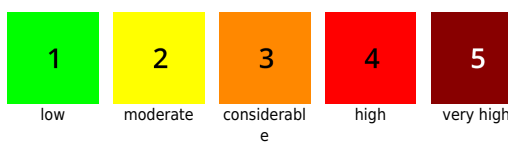
Outlook

No significant change is expected.

Avalanche problems



Danger ratings

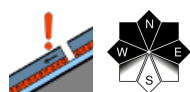


Expositions

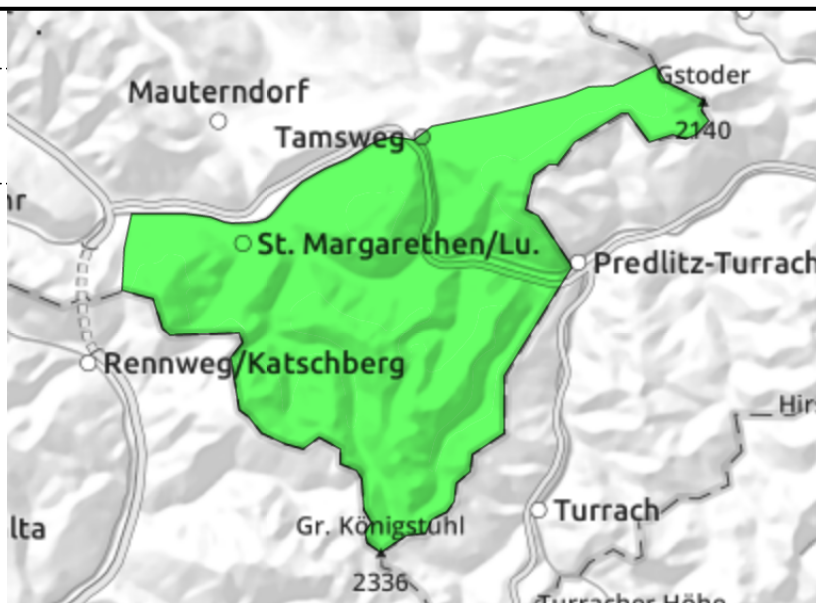


07.03.2022

Nockberge



very few danger zones - persistent weak layer locally



Very few danger zones - persistent weak layer locally

The situation is unchanged: avalanche danger is LOW. Only in very few places can large additional loading trigger a slab avalanche, most likely in transitions where snow is shallow, into deeper snow, in shady and extremely steep terrain. Then, avalanches can grow to medium size.

Snowpack structure

The snowpack shows massive signs of storm-strength wintery winds. The snowdrift accumulations are well consolidated, the surfaces encrusted or hardened. Above the treeline the terrain is largely windblown, there is more snow in the gullies. Inside the old snow are soft layers of expansively metamorphosed (faceted) crystals, but are unlikely to trigger except in isolated cases.

Weather

On Monday, sunny weather, intensifying winds (reaching 30-50 km/hr in the afternoon). At 2000 m: -10 degrees.

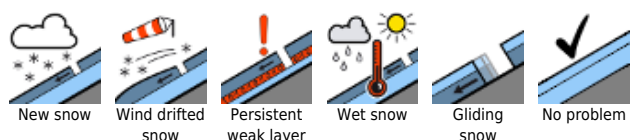
On Tuesday, outstanding visibility from the start. Winds will not disturb. Temperatures slightly higher. At midday at 2000 m: -6 degrees.

Outlook

No significant change is expected.

Translated by Jeffrey McCabe, www.creativtrans.com

Avalanche problems



Danger ratings



Expositions

