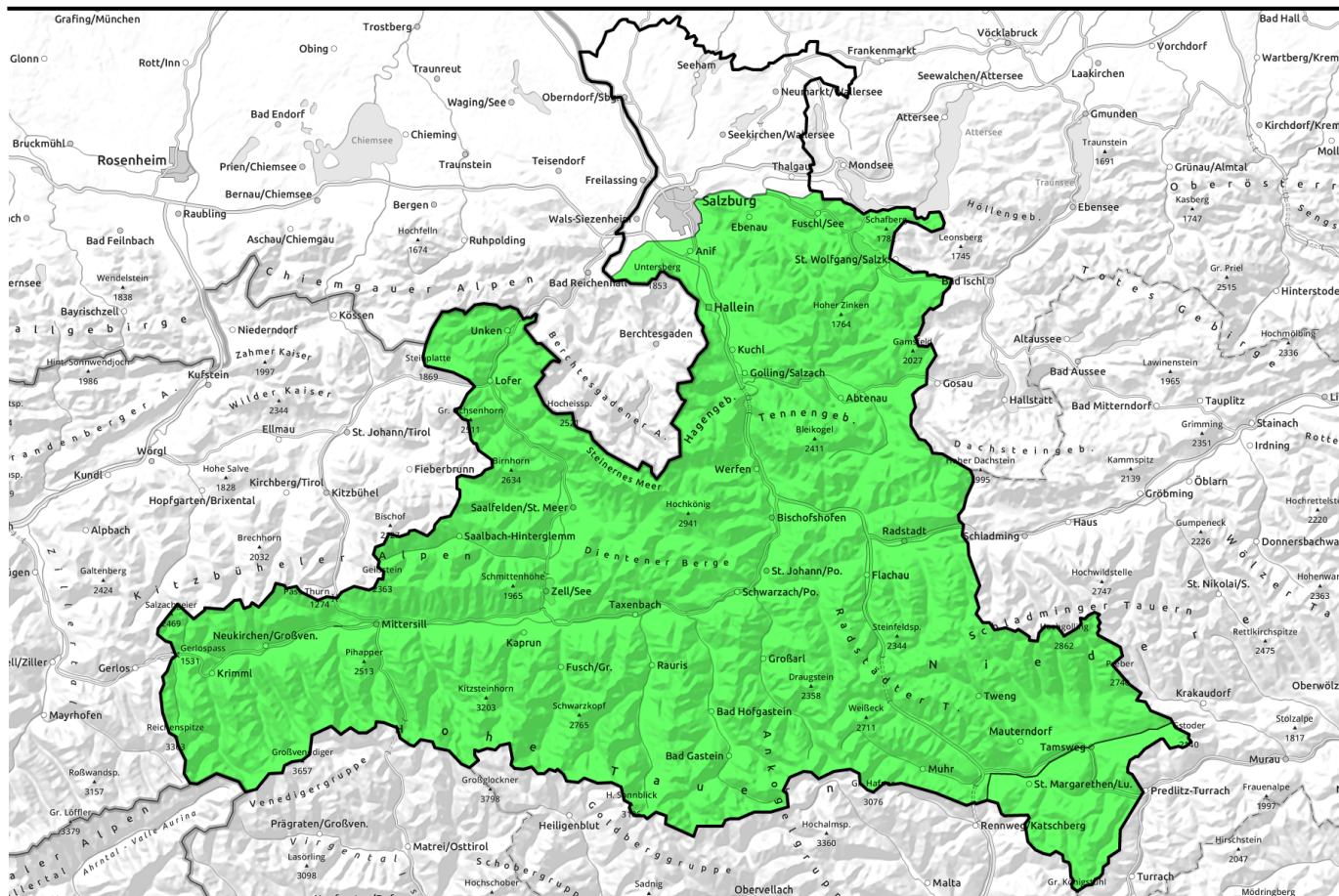


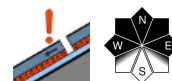
06.03.2022



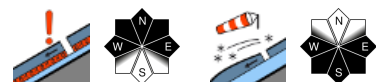
Isolated danger zones at unfavorable spots in the terrain



Nockberge



Ankogelgruppe, Muhr, Goldberggruppe Alpenhauptkamm, Glocknergruppe Alpenhauptkamm, Glocknergruppe Nord, Großvenedigergruppe Nord, Großvenedigergruppe Alpenhauptkamm, Steinernes Meer, Hochkönig, Hagengebirge, Göllstock, Chiemgauer Alpen, Heutal, Reiteralpe, Loferer und Leoganger Steinberge, Kitzbüheler Alpen, Glemmtal, Oberpinzgauer Grasberge, Goldberggruppe Nord, Tennengebirge, Gosaukamm, Osterhorngruppe, Gamsfeldgruppe, Untersbergstock, Dientner Grasberge, Pongauer Grasberge, Niedere Tauern Nord, Niedere Tauern Süd, Niedere Tauern Alpenhauptkamm



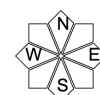
Avalanche problems



Danger ratings

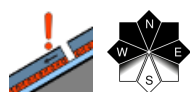


Expositions

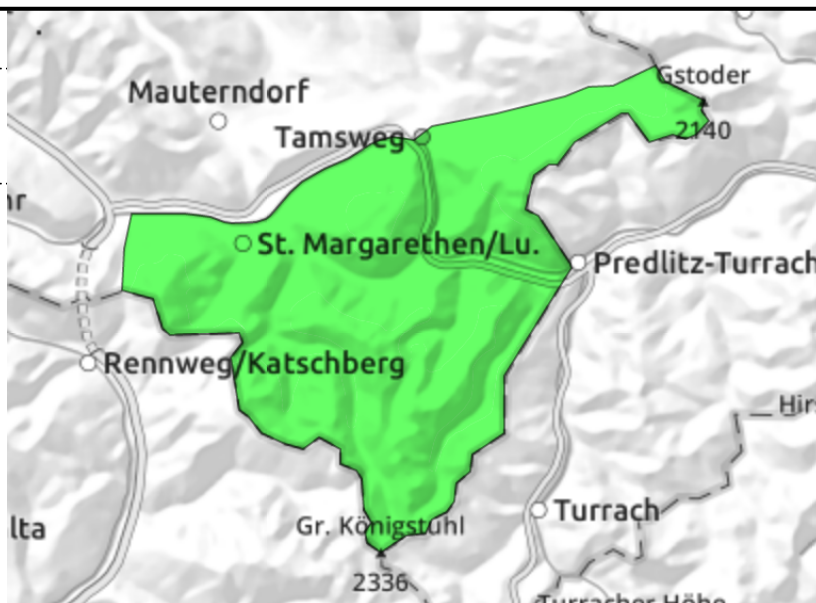


06.03.2022

Nockberge



very few danger zones - persistent weak layer



Very few avalanche prone locations. Persistent weak layer locally.

Avalanche danger is still LOW. The snowpack is quite stable, only in few spots can large additional loading trigger a slab avalanche, most likely in shallow-snow transitions from little to much snow on shady, extremely steep slopes, where avalanches can grow to medium size nonetheless.

Snowpack structure

The snowpack has settled well, shows signs of wintery storm-wind impact. The snowdrifts are well consolidated, the surfaces encrusted or hard. Above the treeline the terrain is windblown, more snow can be found in the bowls. Inside the old snowpack are soft layers of faceted crystals, triggerable only in highly isolated instances. On steep sunny slopes the snow is superficially moist.

Weather

On Sunday, sunny weather, low lying residual cloud, impaired visibility. No precipitation. At 2000 m: -12 to -8 degrees. NE winds in exposed terrain will be brisk (30 km/hr).

On Monday the visibility in the Northern Alps will often be limited by low lying clouds. Winds at high altitudes will be blowing at 30-50 km/hr from the north. At 2000 m: -12 to -8 degrees.

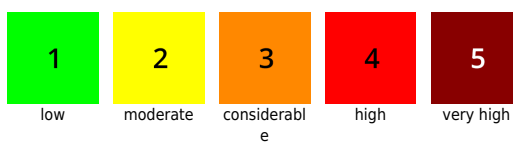
Outlook

No significant change is expected.

Avalanche problems



Danger ratings

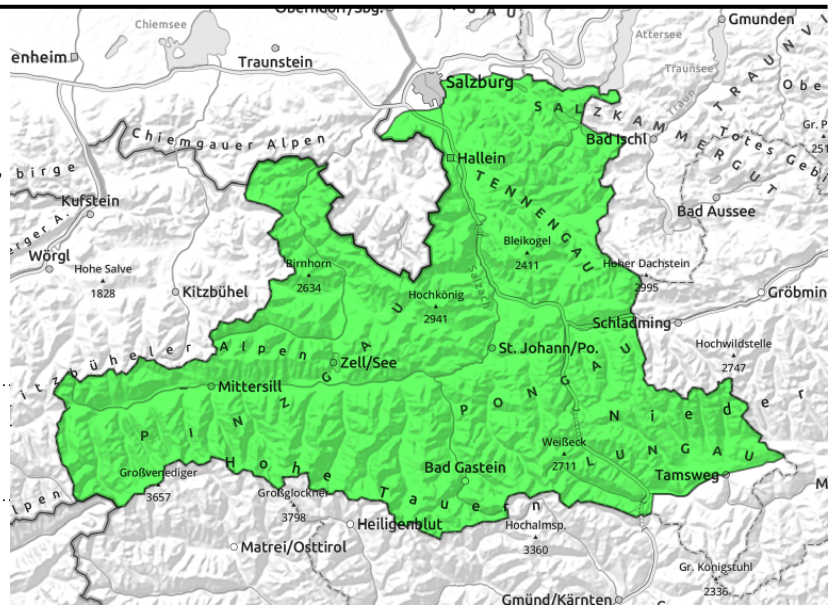


Expositions



06.03.2022

Ankogelgruppe, Muhr, Goldberggruppe
 Alpenhauptkamm, Glocknergruppe
 Alpenhauptkamm, Glocknergruppe Nord,
 Großvenedigergruppe Nord, Großvenedigergruppe
 Alpenhauptkamm, Steinernes Meer, Hochkönig,
 Hagengebirge, Gölstock, Chiemgauer Alpen, Heutal,
 Reiteralpe, Loferer und Leoganger Steinberge,
 Kitzbüheler Alpen, Glemmtal, Oberpinzgauer
 Grasberge, Goldberggruppe Nord, Tennengebirge,
 Gosaukamm, Osterhorngruppe, Gamsfeldgruppe,
 Untersbergstock, Dientner Grasberge, Pongauer
 Grasberge, Niedere Tauern Nord, Niedere Tauern
 Süd, Niedere Tauern Alpenhauptkamm



transitions from shallow to deep snow, shallow-snow zones, very steep, mostly shady



thin ridgeline drifts

Danger zones in gullies and transitions where the snow is shallow

Avalanche danger is LOW. Isolated danger zones in transitions in shady and high alpine terrain, where large additional loading can trigger a slab avalanche which could attain medium size. The fresh snowdrifts in W/S/E facing ridgeline terrain are generally thin, the biggest risk is being forced to take a fall.

Snowpack structure

On shady wind-protected slopes there is settled powder atop a compact old snowpack. Near ridges the surface is wind-impacted, and these effects increase visibly with ascending altitude. On steep sunny slopes the snow is moistened up to intermediate altitudes, the nocturnally formed melt-freeze crust softens up. Hidden beneath the compact wind crusts are soft, faceted layers (persistent weak layer). These layers tend towards fracture propagation but are unlikely to trigger. In isolated cases there are initial signs of a near-surface COLD ON WARM problem on steep high-alpine sunny slopes (above 2600 m).

Weather

On Sunday, sunny weather, low lying residual cloud, impaired visibility. No precipitation. At 2000 m: -12 to -8 degrees. NE winds in exposed terrain will be brisk (30 km/hr).

On Monday the visibility in the Northern Alps will often be limited by low lying clouds. In the inneralpine grassy mountains and Tauern, visibility will swiftly improve and sunshine is expected even in the morning hours. Winds at high altitudes will be blowing at 30-50 km/hr from the north. At 2000 m: -12 to -8 degrees; at 3000 m: -13 degrees.

Outlook

No significant change is expected.

Translated by Jeffrey McCabe, www.creativtrans.com

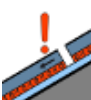
Avalanche problems



New snow



Wind drifted snow



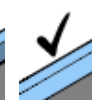
Persistent weak layer



Wet snow

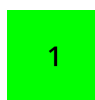


Gliding snow



No problem

Danger ratings



1

low



2

moderate



3

considerable



4

high



5

very high



Expositions