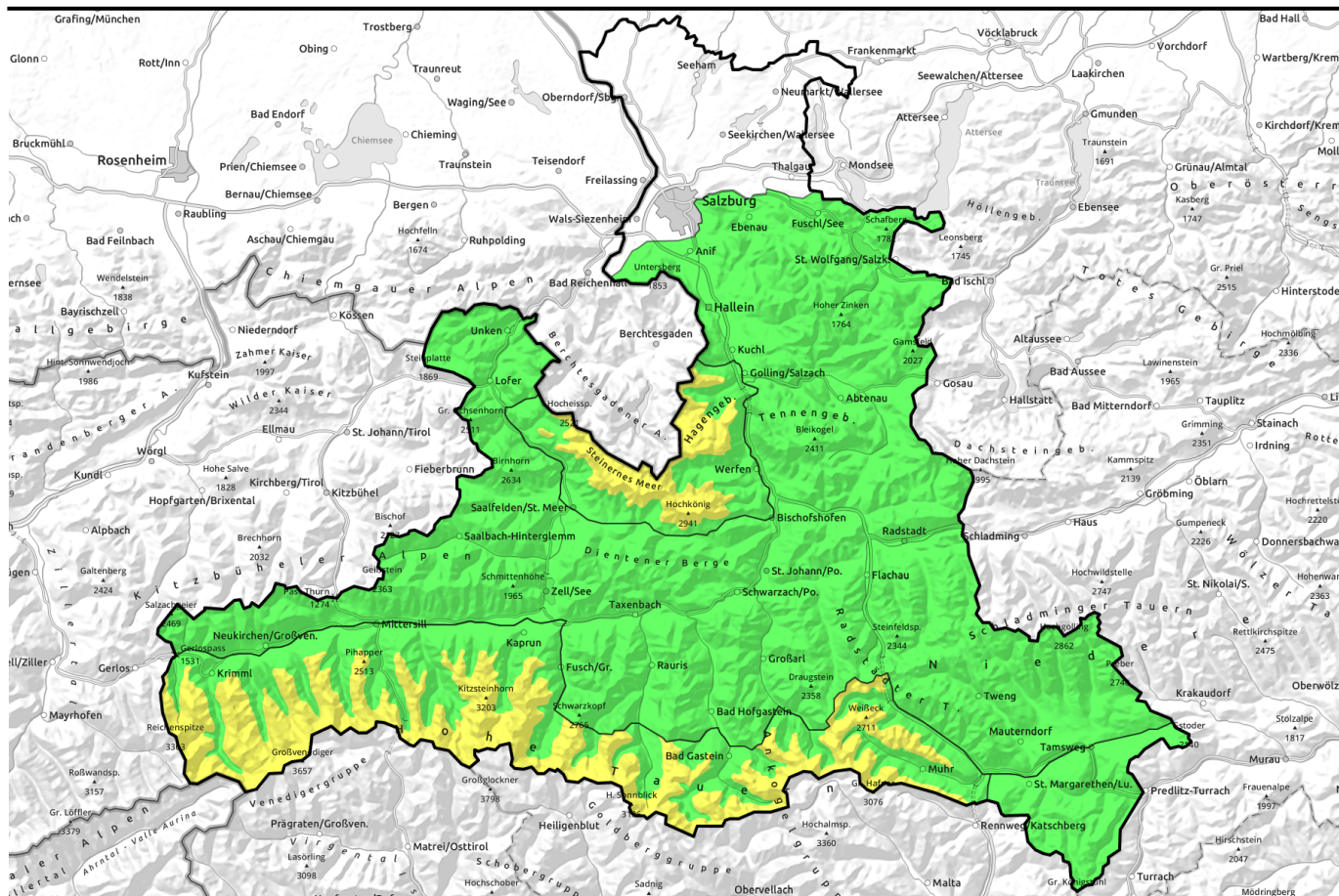


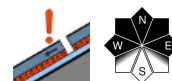
**03.03.2022**



## Generally favorable conditions



Nockberge



2200 m

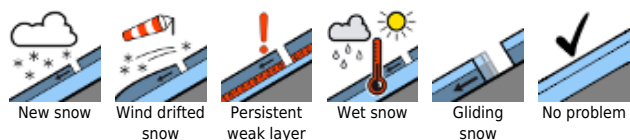
Ankogelgruppe, Muhr, Goldberggruppe Alpenhauptkamm, Glocknergruppe Alpenhauptkamm, Glocknergruppe Nord, Großvenedigergruppe Nord, Großvenedigergruppe Alpenhauptkamm, Steinernes Meer, Hochkönig, Hagengebirge, Göllstock



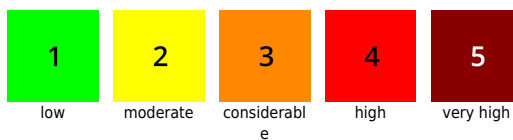
Osterhorngruppe, Gamsfeldgruppe, Untersbergstock, Chiemgauer Alpen, Heutal, Reiteralpe, Kitzbüheler Alpen, Glemmtal, Oberpinzgauer Grasberge, Dientner Grasberge, Goldberggruppe Nord, Niedere Tauern Nord, Pongauer Grasberge, Loferer und Leoganger Steinberge, Niedere Tauern Alpenhauptkamm, Niedere Tauern Süd, Tennengebirge, Gosaukamm



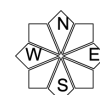
### Avalanche problems



### Danger ratings

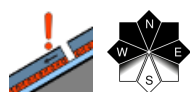


### Expositions

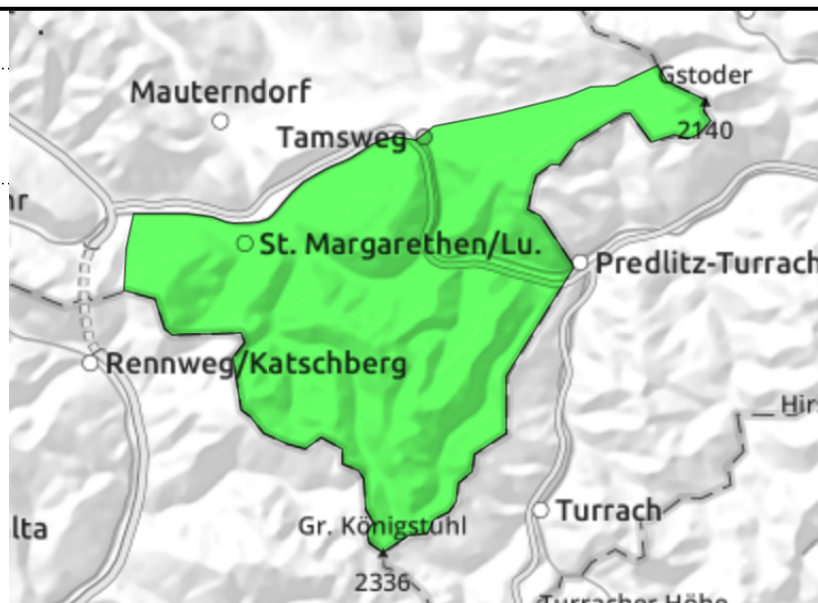


**03.03.2022**

**Nockberge**



very few danger zones - persistent weak layer



**Very few avalanche prone locations. Persistent weak layer locally.**

Avalanche danger is still LOW. The snowpack is quite stable, only in few spots can large additional loading trigger a slab avalanche, most likely in shallow-snow transitions from little to much snow on shady, extremely steep slopes, where avalanches can grow to medium size nonetheless.

**Snowpack structure**

The snowpack has settled well, shows signs of storm-wind impact. The snowdrifts are well consolidated, the surfaces encrusted or hard. Above the treeline the terrain is windblown, more snow can be found in the bowls. Inside the old snowpack are soft layers of faceted crystals, triggerable only in highly isolated instances. On steep sunny slopes the snow is superficially moist.

**Weather**

On Thursday, very sunny, outstanding visibility, few clouds, winds will intensify slightly (30-40 km/hr) from N/NW. At 2000 m: -5 to -3 degrees.

On Friday, unimpeded sunshine. Convective cloud build-up starting at midday, but it will remain dry. Cold northerly winds in exposed terrain (30-40 km/hr). At 2000 m: -10 to -7 degrees.

**Outlook**

No significant change is expected.

**Avalanche problems**



**Danger ratings**



**Expositions**

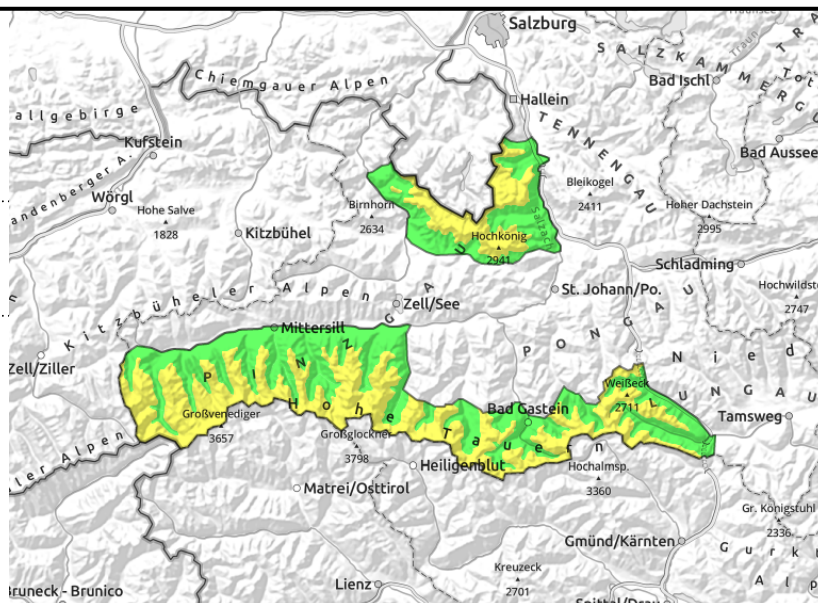


**03.03.2022**

**Ankogelgruppe, Muhr, Goldberggruppe  
Alpenhauptkamm, Glocknergruppe  
Alpenhauptkamm, Glocknergruppe Nord,  
Großvenedigergruppe Nord, Großvenedigergruppe  
Alpenhauptkamm, Steinernes Meer, Hochkönig,  
Hagengebirge, Göllstock**



transitions from shallow to deep snow, very steep, mostly shady



## Danger zones in shallow-snow transitions and steep ridgeline slopes

Caution is required in transitions in shady and high-alpine steep terrain, where large additional loading can trigger AN OLDER SNOWDRIFT MASS, then grow to a medium-to-large sized avalanche. Most danger zones are in W/N/E aspects distant from ridges and in steep gullies. The fresh snowdrifts in E/S/W facing ridgeline terrain are generally thin, the biggest risk is being forced to take a fall.

### Snowpack structure

Loose powder (15-25 cm) lies atop a compact old snowpack surface. Near ridges the surface is wind-impacted, this influence increases with ascending altitude. Thin, soft snowdrift masses often are deposited atop soft layers.

Older snowdrift accumulations from last week are still instable on extremely steep slopes, as several triggerings showed over the weekend. Hidden, more deeply embedded faceted-soft layers are unlikely to trigger.

### Weather

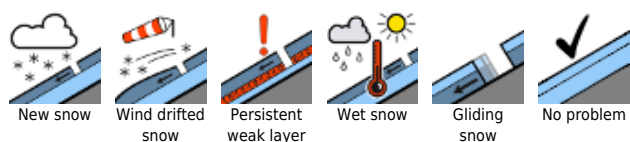
On Thursday, very sunny, outstanding visibility, few clouds, winds will intensify slightly (30-40 km/hr) from N/NW. At 2000 m: -5 to -3 degrees.

On Friday, unimpeded sunshine. Convective cloud build-up starting at midday, but it will remain dry. Cold northerly winds in exposed terrain (30-40 km/hr). At 2000 m: -10 to -7 degrees.

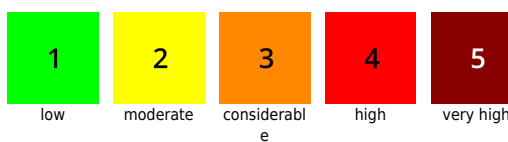
### Outlook

The trigger-sensitivity of the old snow will recede. Otherwise, no significant change is expected.

#### Avalanche problems



#### Danger ratings

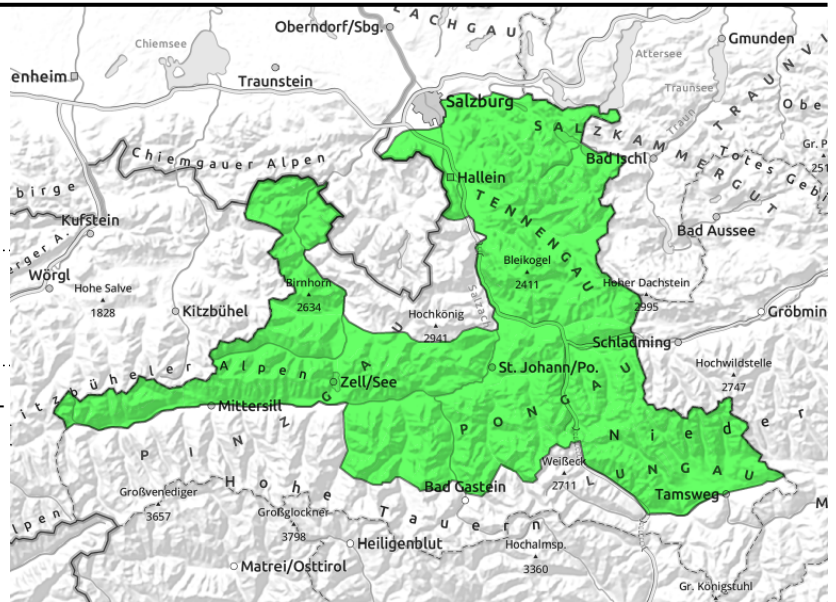


#### Expositions



**03.03.2022**

Osterhorngruppe, Gamsfeldgruppe, Untersbergstock, Chiemgauer Alpen, Heutal, Reiteralpe, Kitzbüheler Alpen, Glemmtal, Oberpinzgauer Grasberge, Dientner Grasberge, Goldberggruppe Nord, Niedere Tauern Nord, Pongauer Grasberge, Loferer und Leoganger Steinberge, Niedere Tauern Alpenhauptkamm, Niedere Tauern Süd, Tennengebirge, Gosaukamm



transitions into gullies, shallow-snow zones, particularly on shady slopes

## Few danger zones. Heed fresh snowdrifts. Avoid transitions into wind-loaded zones

Avalanche danger is LOW. The snowpack is quite stable. The thin fresh snowdrift patches near ridges are risky mostly for forcing a fall.

Old snowpack: only in very few spots can large additional loading trigger a slab. They are found mostly in shallow-snow transitions on shady, extremely steep slopes and in gullies.

### Snowpack structure

There is up to 20 cm of cold powder atop a compact old snowpack. Near ridges the surface is impacted by N/NW winds, but the drifts are not large. Inside the old snowpack are soft layers of faceted crystals, blanketed by hardened crusts and thus, unlikely to trigger. However, they are blanketed by hardened crusts. On steep sunny slopes the snow moistens superficially during the day (breakable melt-freeze).

### Weather

On Thursday, very sunny, outstanding visibility, few clouds, winds will intensify slightly (30-40 km/hr) from N/NW. At 2000 m: -5 to -3 degrees.

On Friday, unimpeded sunshine. Convective cloud build-up starting at midday, but it will remain dry. Cold northerly

### Outlook

No significant change is expected.

Translated by Jeffrey McCabe, [www.creativtrans.com](http://www.creativtrans.com)

#### Avalanche problems



New snow



Wind drifted snow



Persistent weak layer



Wet snow



Gliding snow



No problem

#### Danger ratings



1

low



2

moderate



3

considerable



4

high



5

very high

#### Expositions

