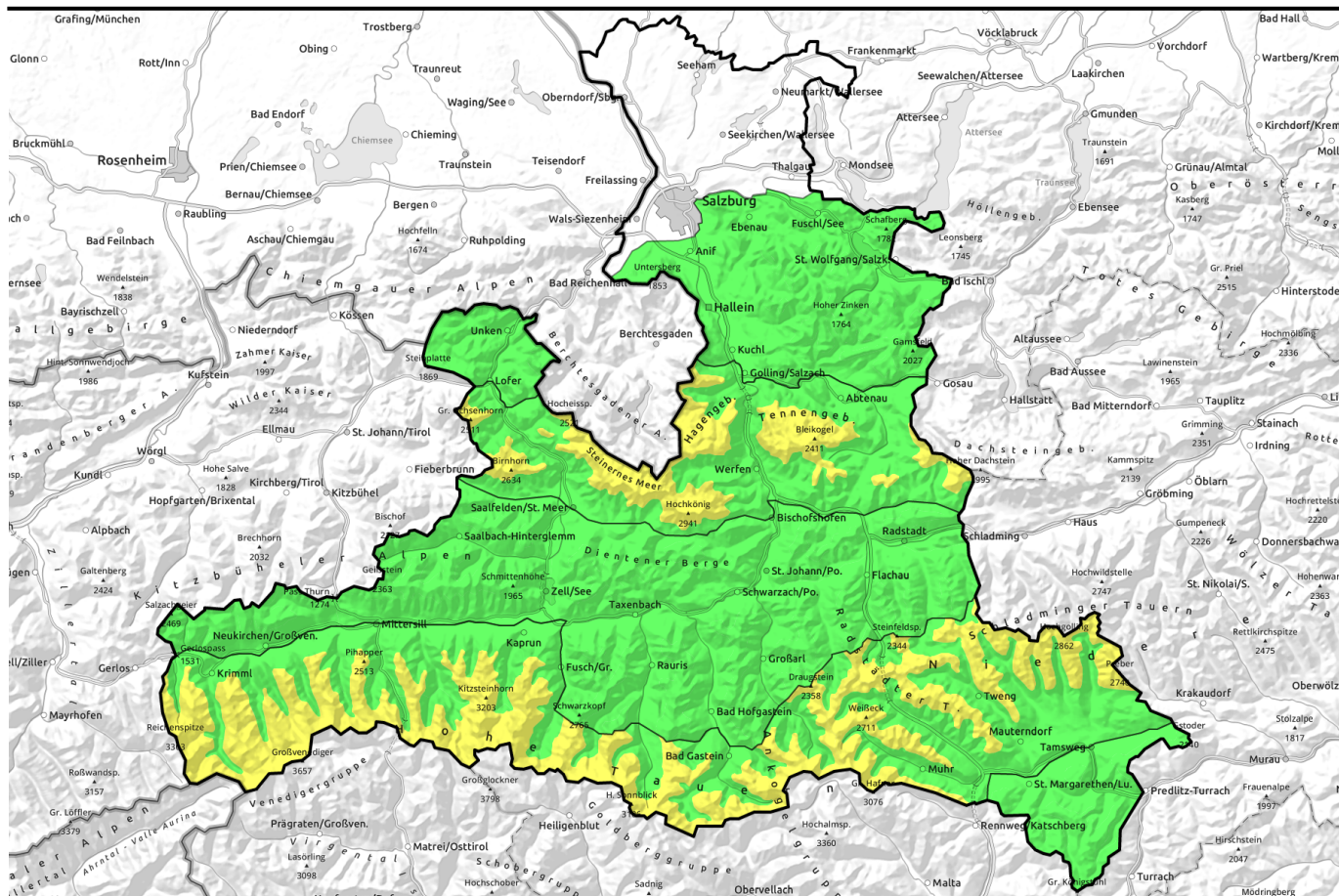


**02.03.2022**



## Generally favorable conditions

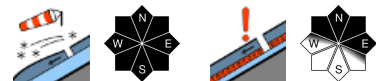


Nockberge

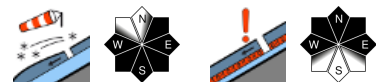


2100 m

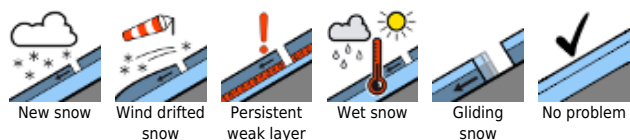
Niedere Tauern Süd, Ankogelgruppe, Muhr, Goldberggruppe Alpenhauptkamm, Glocknergruppe Alpenhauptkamm, Glocknergruppe Nord, Großvenedigergruppe Nord, Großvenedigergruppe Alpenhauptkamm, Loferer und Leoganger Steinberge, Steinernes Meer, Hochkönig, Hagengebirge, Göllstock, Tennengebirge, Gosaukamm, Niedere Tauern Alpenhauptkamm



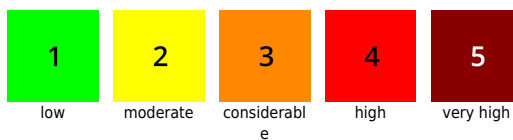
Osterhorngruppe, Gamsfeldgruppe, Untersbergstock, Chiemgauer Alpen, Heutal, Reiteralpe, Kitzbüheler Alpen, Glemmtal, Oberpinzgauer Grasberge, Dientner Grasberge, Goldberggruppe Nord, Niedere Tauern Nord, Pongauer Grasberge



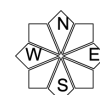
### Avalanche problems



### Danger ratings

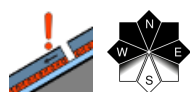


### Expositions

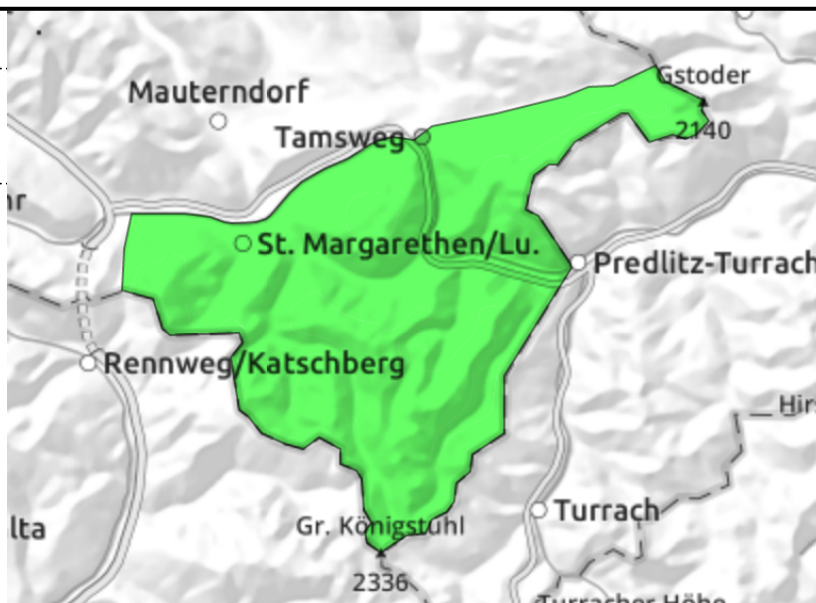


**02.03.2022**

**Nockberge**



very few danger zones - persistent weak layer



**Very few avalanche prone locations. Persistent weak layer locally.**

Avalanche danger is still LOW. The snowpack is quite stable, only in few spots can large additional loading trigger a slab avalanche, most likely in shallow-snow transitions from little to much snow on shady, extremely steep slopes, where avalanches can grow to medium size nonetheless.

**Snowpack structure**

The snowpack has settled well, shows signs of storm-wind impact. The snowdrifts are well consolidated, the surfaces encrusted or hard. Above the treeline the terrain is windblown, more snow can be found in the bowls. Inside the old snowpack are soft layers of faceted crystals, triggerable only in highly isolated instances.

**Weather**

On Wednesday, initially sunny, cloudbanks will soon move in. Light conditions will become diffuse, but the peaks will remain free. Northerly winds in exposed terrain will be blowing at 30 km/hr. At 2000 m: -3 degrees.

On Thursday, again quite sunny. In the afternoon, some harmless convective cloud build-up. Winds will strengthen. At 2000 m: -3 degrees.

**Outlook**

No significant change is expected. Steep sunny slopes will moisten on Thursday.

**Avalanche problems**



**Danger ratings**

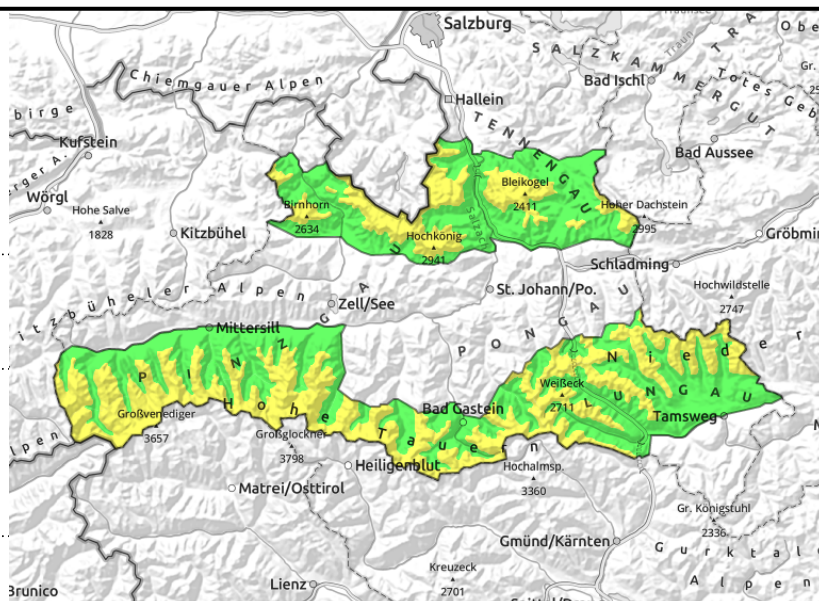


**Expositions**



**02.03.2022**

**Niedere Tauern Süd, Ankogelgruppe, Muhr, Goldberggruppe Alpenhauptkamm, Glocknergruppe Alpenhauptkamm, Glocknergruppe Nord, Großvenedigergruppe Nord, Großvenedigergruppe Alpenhauptkamm, Loferer und Leoganger Steinberge, Steinernes Meer, Hochkönig, Hagengebirge, Göllstock, Tennengebirge, Gosaukamm, Niedere Tauern Alpenhauptkamm**



older snowdrifts distant from ridges (W/N/E) esp. on Main Tauern Ridge - fresh ridgeline snowdrifts



transitions from shallow to deep snow, very steep, mostly shady

## Danger zones in shallow-snow transitions and steep ridgeline slopes

Avalanche danger above 2100 m is MODERATE, below that altitude danger is LOW.

Caution is required in transitions in shady and high-alpine steep terrain, where large additional loading can trigger AN OLDER SNOWDRIFT MASS, then grow to a medium-to-large sized avalanche. Most danger zones are in W/N/E aspects distant from ridges and in steep gullies. The fresh snowdrifts in E/S/W facing ridgeline terrain are generally thin, the biggest risk is being forced to take a fall.

### Snowpack structure

Loose powder (15-25 cm) lies atop a compact old snowpack surface. Near ridges the surface is wind-impacted, this influence increases with ascending altitude. Thin, soft snowdrift masses often are deposited atop soft layers.

Older snowdrift accumulations from last week are still unstable on extremely steep slopes, as several triggerings showed over the weekend. More deeply embedded faceted-soft layers are unlikely to trigger.

### Weather

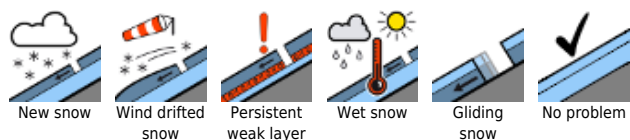
On Wednesday, initially sunny, cloudbanks will soon move in. Light conditions will become diffuse, but the peaks will remain free. Northerly winds in exposed terrain will be blowing at 30 km/hr. At 2000 m: -5 to -2 degrees; at 3000 m: -9 degrees.

On Thursday, again quite sunny. In the afternoon, some harmless convective cloud build-up. Winds will strengthen. At 2000 m: -4 degrees; at 3000 m: -11 degrees.

### Outlook

No significant change is expected. Steep sunny slopes will moisten on Thursday.

#### Avalanche problems



#### Danger ratings

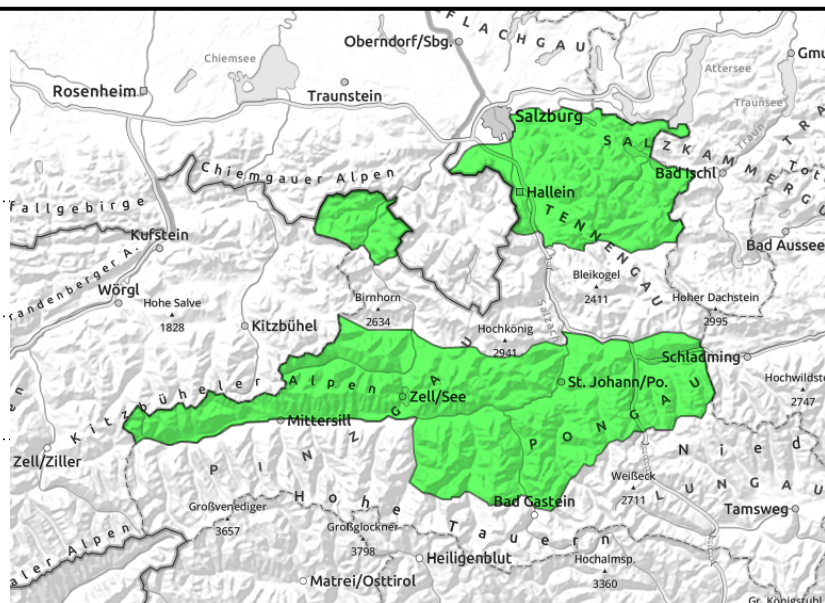


#### Expositions



**02.03.2022**

**Osterhorngruppe, Gamsfeldgruppe, Untersbergstock, Chiemgauer Alpen, Heutal, Reiteralpe, Kitzbüheler Alpen, Glemmtal, Oberpinzgauer Grasberge, Dientner Grasberge, Goldberggruppe Nord, Niedere Tauern Nord, Pongauer Grasberge**



possible thin snowdrift patches near ridges



triggerable only in few places

**Few danger zones. Heed fresh snowdrifts. Avoid transitions into wind-loaded zones**

Avalanche danger is LOW. The snowpack is quite stable. The thin fresh snowdrift patches near ridges are risky mostly for forcing a fall.

Old snowpack: only in very few spots can large additional loading trigger a slab. They are found mostly in shallow-snow transitions on shady, extremely steep slopes and in gullies.

**Snowpack structure**

There is 10-20 cm of cold powder atop a compact old snowpack. Near ridges the surface is impacted by N/NW winds, but the drifts are not large. Inside the old snowpack are soft layers of faceted crystals, blanketed by hardened crusts and thus, unlikely to trigger.

**Weather**

On Wednesday, initially sunny, cloudbanks will soon move in. Light conditions will become diffuse, but the peaks will remain free. Northerly winds in exposed terrain will be blowing at 30 km/hr. At 2000 m: -5 to -2 degrees.

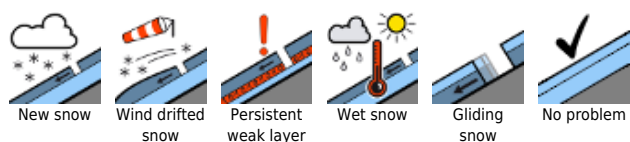
On Thursday, again quite sunny. In the afternoon, some harmless convective cloud build-up. Winds will strengthen. At 2000 m: -4 degrees.

**Outlook**

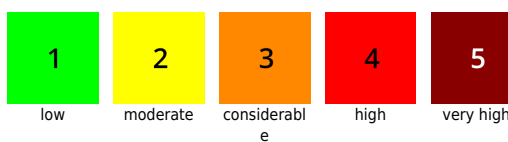
No significant change is expected. Steep sunny slopes will moisten on Thursday.

Translated by Jeffrey McCabe, [www.creativtrans.com](http://www.creativtrans.com)

**Avalanche problems**



**Danger ratings**



**Expositions**

