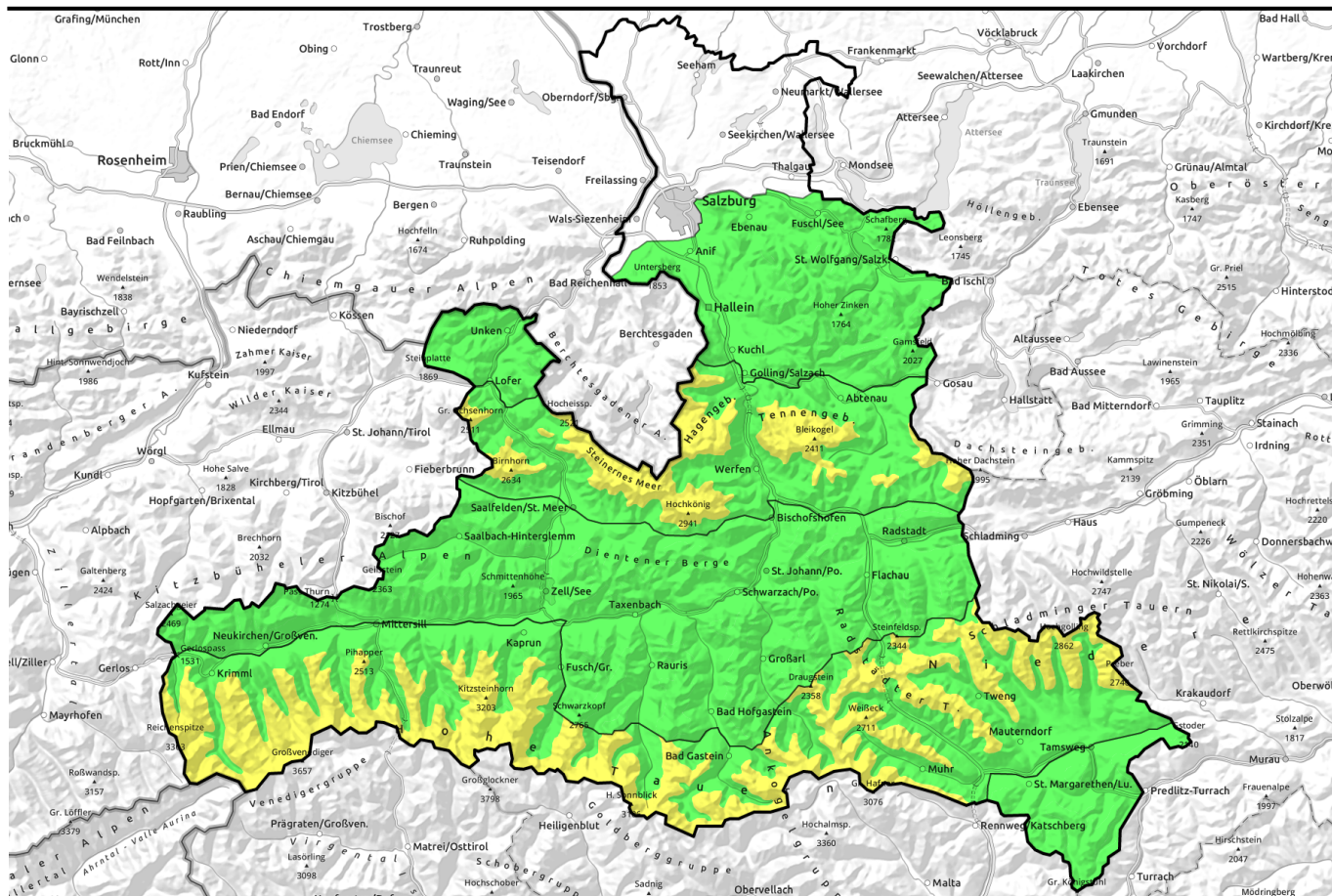


01.03.2022



Cloudless skies - cold powder - caution urged on very steep slopes

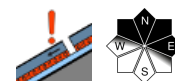


Nockberge



2100 m

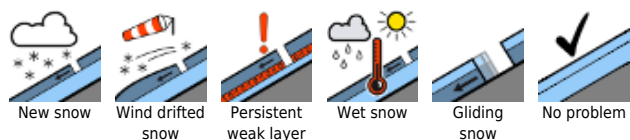
Niedere Tauern Süd, Ankogelgruppe, Muhr, Niedere Tauern Alpenhauptkamm, Goldberggruppe Alpenhauptkamm, Glocknergruppe Alpenhauptkamm, Glocknergruppe Nord, Großvenedigergruppe, Großvenedigergruppe Alpenhauptkamm, Loferer und Leoganger Steinberge, Steinernes Meer, Hochkönig, Hagengebirge, Göllstock, Tennengebirge, Gosaukamm



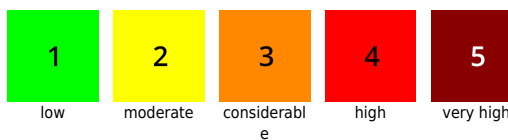
Osterhorngruppe, Gamsfeldgruppe, Untersbergstock, Chiemgauer Alpen, Heutal, Reiteralpe, Kitzbüheler Alpen, Glemmtal, Oberpinzgauer Grasberge, Dientner Grasberge, Goldberggruppe Nord, Niedere Tauern Nord, Pongauer Grasberge



Avalanche problems



Danger ratings

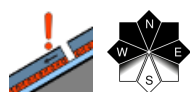


Expositions

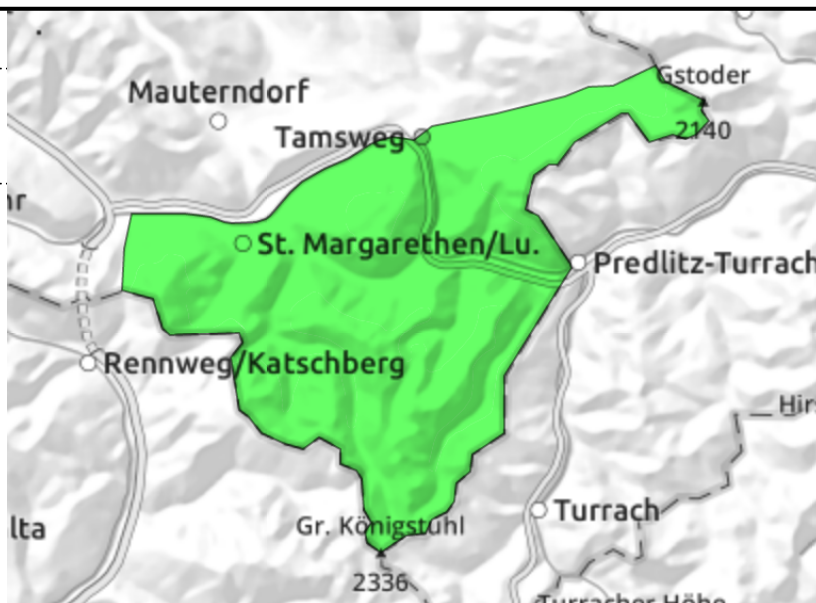


01.03.2022

Nockberge



very few danger zones - persistent weak layer



Very few avalanche prone locations - persistent weak layer locally

Avalanche danger is still LOW. The snowpack is relatively stable, only in few spots can large additional loading trigger a slab, most likely where the snow is shallow and in transitions from shallow to deep snow in shady and extremely steep terrain. Avalanches can then grow to medium size.

Snowpack structure

The snowpack has settled well, shows huge signs of storm winds. The snowdrift accumulations are well consolidated, the surfaces melt-freeze encrusted or hard. Above the treeline the terrain is utterly windblown. More snow is in the bowls. Inside the old snowpack are weak layers of faceted crystals which can be triggered in extremely isolated cases.

Weather

On Tuesday, superb weather, visibility more than 100 km, azure skies, light winds (30 km/hr on Main Alpine Ridge in exposed zones). Slightly higher temperatures. At 2000 m: -4 degrees.

On Wednesday, good visibility, initially very sunny. Clouds will move in during the afternoon, the light conditions become diffuse. Little wind. At 2000 m: -3 degrees.

Outlook

No significant change is expected. Steep sunny slopes will moisten.

Avalanche problems



Danger ratings

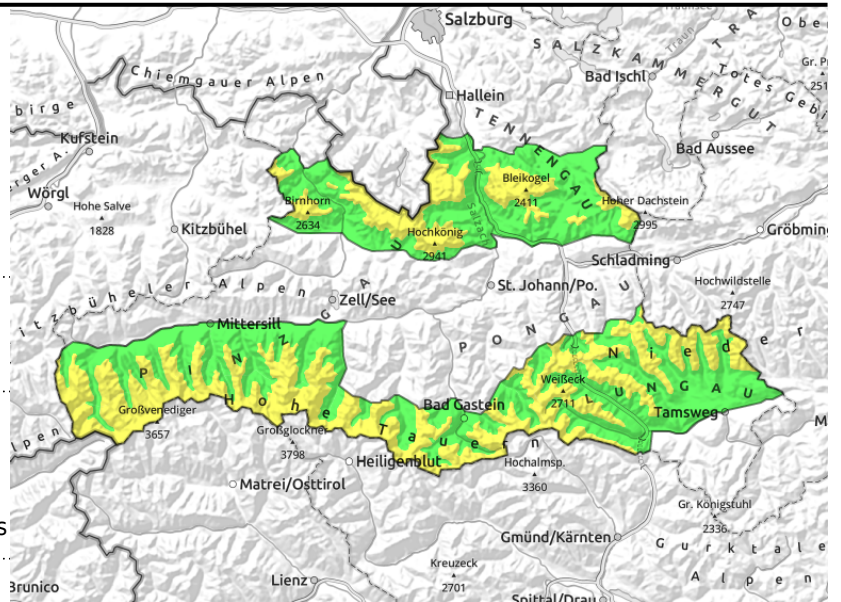
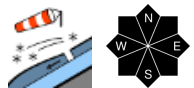


Expositions

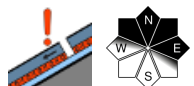


01.03.2022

Niedere Tauern Süd, Ankogelgruppe, Muhr, Niedere Tauern Alpenhauptkamm, Goldberggruppe Alpenhauptkamm, Glocknergruppe Alpenhauptkamm, Glocknergruppe Nord, Großvenedigergruppe Nord, Großvenedigergruppe Alpenhauptkamm, Loferer und Leoganger Steinberge, Steinernes Meer, Hochkönig, Hagengebirge, Göllstock, Tennengebirge, Gosaukamm

older snowdrifts distant from ridges (W/N/E) esp. on Main Tauern Ridge - fresh ridgeline snowdrifts from northerly winds



transitions from shallow to deep snow, very steep, mostly shady

Danger zones in shallow-snow transitions and steep ridgeline slopes

Avalanche danger above 2100 m is MODERATE, below that altitude danger is LOW.

Caution is required in transitions in shady and high-alpine steep terrain, where large additional loading can trigger AN OLDER SNOWDRIFT MASS, then grow to a medium-to-large sized avalanche. Most danger zones are in W/N/E aspects distant from ridges and in steep gullies. The fresh snowdrifts in E/S/W facing ridgeline terrain are generally thin, the biggest risk is being forced to take a fall. On sun-drenched steep rocky slopes, naturally triggered small avalanches are possible. Due to the dry air, the slopes are not moistening much.

Snowpack structure

Loose powder (15-25 cm) lies atop a compact old snowpack surface. Near ridges the surface is wind-impacted, this influence increases with ascending altitude. Thin, soft snowdrift masses often are deposited atop soft layers.

Older snowdrift accumulations from last week are still instable on extremely steep slopes, as several triggerings showed over the weekend. More deeply embedded faceted-soft layers are unlikely to trigger.

Weather

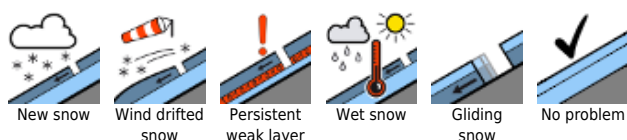
On Tuesday, superb weather, visibility more than 100 km, azure skies, light winds (30 km/hr on Main Alpine Ridge in exposed zones). Slightly higher temperatures. At 2000 m: -4 degrees, at 3000 m: -9 degrees.

On Wednesday, good visibility, initially very sunny. Clouds will move in during the afternoon, the light conditions become diffuse. Little wind. At 2000 m: -3 degrees; at 3000 m: -8 degrees.

Outlook

No significant change is expected. Steep sunny slopes will moisten.

Avalanche problems



Danger ratings

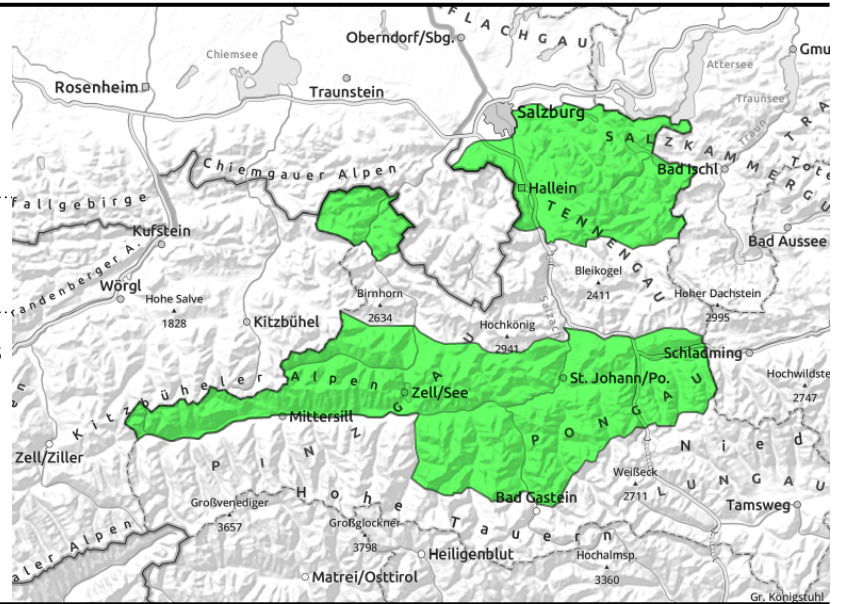


Expositions



01.03.2022

Osterhorngruppe, Gamsfeldgruppe, Untersbergstock, Chiemgauer Alpen, Heutal, Reiteralpe, Kitzbüheler Alpen, Glemmtal, Oberpinzgauer Grasberge, Dientner Grasberge, Goldberggruppe Nord, Niedere Tauern Nord, Pongauer Grasberge



possible thin snowdrift patches near ridges

Few danger zones. Heed fresh snowdrifts. Avoid transitions into wind-loaded zones

Avalanche danger is LOW. The snowpack is quite stable. The thin fresh snowdrift patches near ridges are risky mostly for forcing a fall.

Old snowpack: only in very few spots can large additional loading trigger a slab. They are found mostly in shallow-snow transitions on shady, extremely steep slopes and in gullies.

Snowpack structure

There is 10-20 cm of cold powder atop a compact old snowpack. Near ridges the surface is impacted by N/NW winds, but the drifts are not large. Inside the old snowpack are soft layers of faceted crystals, blanketed by hardened crusts and thus, unlikely to trigger.

Weather

On Tuesday, superb weather, visibility more than 100 km, azure skies, light winds (30 km/hr on Main Alpine Ridge in exposed zones). Slightly higher temperatures. At 2000 m: -4 degrees.

On Wednesday, good visibility, initially very sunny. Clouds will move in during the afternoon, the light conditions become diffuse. Little wind. At 2000 m: -3 degrees.

Outlook

No significant change is expected. Steep sunny slopes will moisten.

Translated by Jeffrey McCabe, www.creativtrans.com

Avalanche problems



New snow



Wind drifted snow



Persistent weak layer



Wet snow



Gliding snow



No problem

Danger ratings



1

low



2

moderate



3

considerable



4

high



5

very high

Expositions

