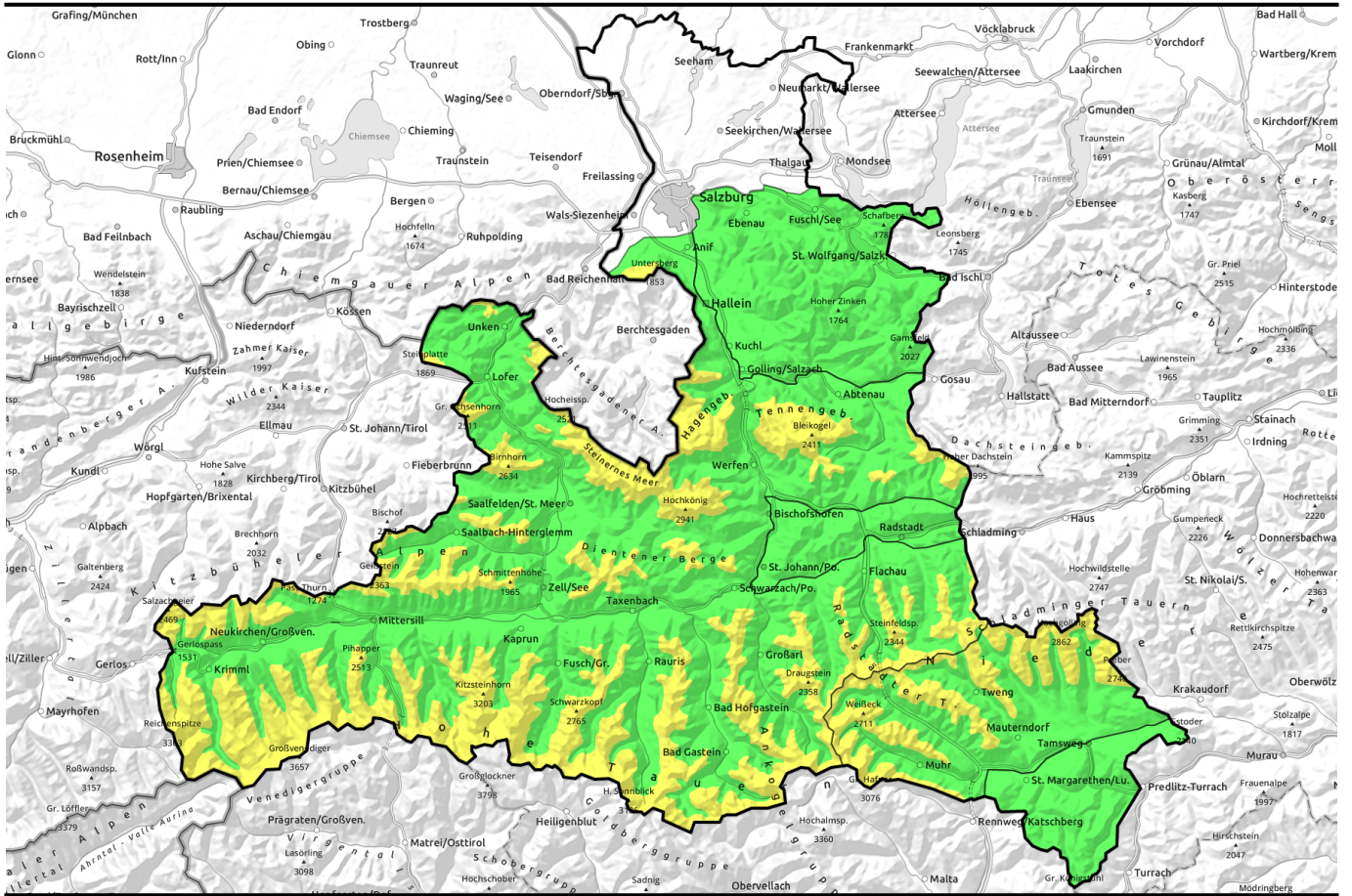


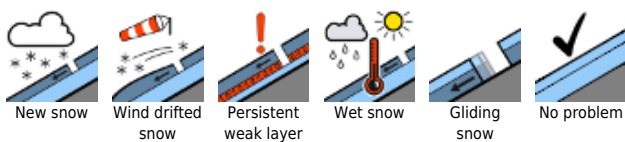
**27.02.2022**



## Snowdrift problem + Persistent weak layer problem

	Nockberge	
	Osterhorngruppe, Gamsfeldgruppe, Pongauer Grasberge	
	1800 m Großenedigergruppe Alpenhauptkamm, Glocknergruppe Alpenhauptkamm, Goldberggruppe Alpenhauptkamm, Niedere Tauern Alpenhauptkamm, Niedere Tauern Nord, Goldberggruppe Nord, Glocknergruppe Nord, Großenedigergruppe Nord, Oberpinzgauer Grasberge, Kitzbüheler Alpen, Glemmtal, Loferer und Leoganger Steinberge, Chiemgauer Alpen, Heutal, Reiteralpe, Steinernes Meer, Hochkönig, Hagengebirge, Göllstock, Dientner Grasberge, Tennengebirge, Gosaukamm, Untersbergstock	
	forestline Ankogelgruppe, Muhr, Niedere Tauern Süd	

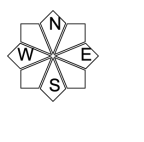
### Avalanche problems



### Danger ratings

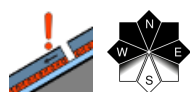


### Expositions

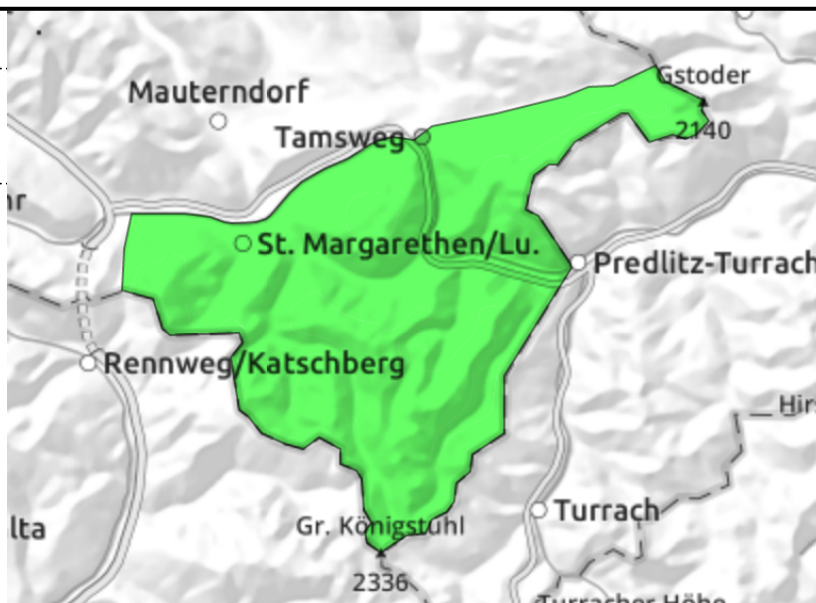


**27.02.2022**

**Nockberge**



very few danger zones, small persistent weak layer problem



**Only few avalanche prone locations. Persistent weak layer locally.**

Avalanche danger continues to be LOW. The snowpack is relatively stable. Only in very few spot can a slab be triggered by large additional loading, most likely where snow is shallow in transitions from shallow to deep snow in extremely steep north-facing terrain. Avalanches can grow to medium size.

**Snowpack structure**

The snowpack has settled well, shows immense signs of stormy winter winds. The most recent snowdrift accumulations are well consolidated. Surfaces are melt-freeze encrusted or hard. Above the treeline the terrain is windblown. Snow fills the bowls. Inside the old snow are weak layers of faceted crystals which are not currently a threat except in isolated cases.

**Weather**

On Sunday, low lying residual cloud will disperse, along with the fogbanks, in the morning. Then follows unimpeded sunshin. At 2000 m: -7 degrees.

On Monday, sunshine and outstanding visibility. Cold. Northerly winds will intensify somewhat.

**Outlook**

Little change.

**Avalanche problems**



**Danger ratings**



**Expositions**



**27.02.2022**

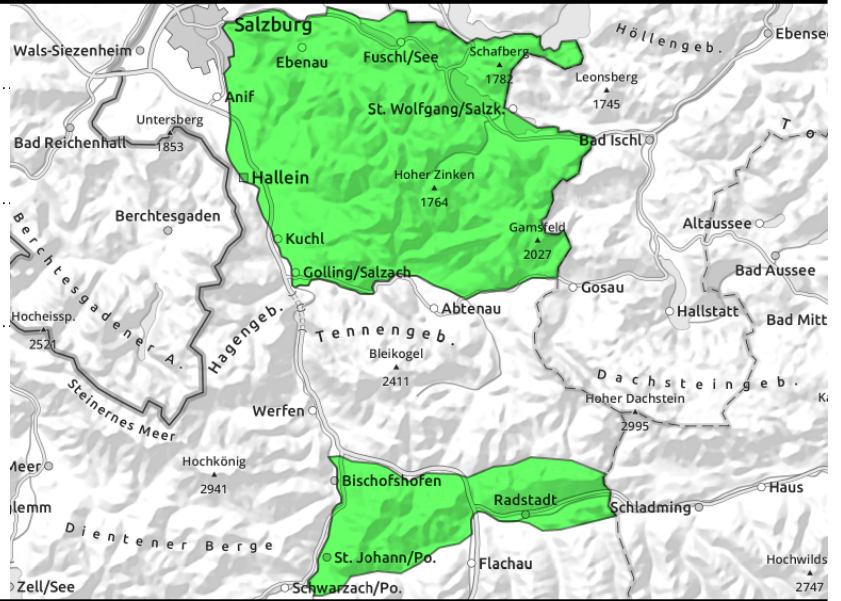
**Osterhorngruppe, Gamsfeldgruppe, Pongauer Grasberge**



very few danger zones,  
persistent weak layer



possibly thin fresh snowdrift  
patches near ridges



**Few avalanche prone locations in transitions to wind-loaded zones**

Avalanche danger is LOW in general. The snowpack is relatively stable. Only in very few spot can a slab be triggered by large additional loading, most likely where snow is shallow in transitions from shallow to deep snow in extremely steep north-facing terrain. Avalanches can grow to medium size. The thin snowdrift patches are mainly a risk for forcing a fall.

**Snowpack structure**

There was 10-20 cm of cold powder deposited atop a compact old snowpack surface, transported by N/NW winds, generating mostly small-sized drifts. Inside the old snowpack are soft layers of faceted crystals, which are currently not a threat except in isolated cases.

**Weather**

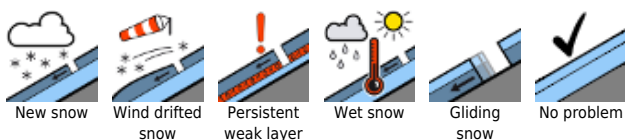
On Sunday, low lying residual cloud will disperse, along with the fogbanks, in the morning. Then follows unimpeded sunshin. At 2000 m: -4 degrees.

On Monday, sunshine and outstanding visibility. Cold. Northerly winds will intensify somewhat in exposed zones (ridges, summits).

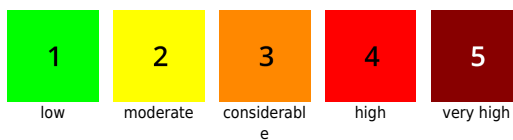
**Outlook**

Little change.

**Avalanche problems**



**Danger ratings**

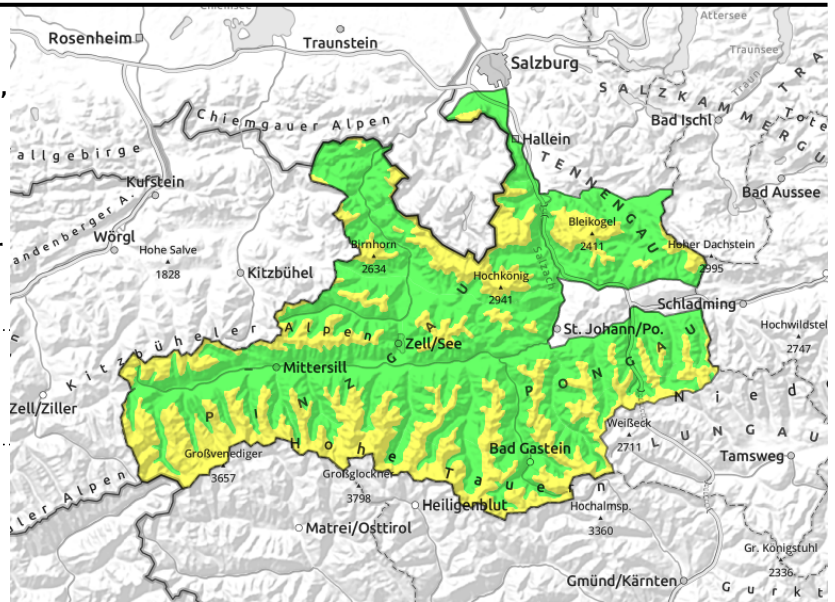


**Expositions**



**27.02.2022**

Großvenedigergruppe Alpenhauptkamm, Glocknergruppe Alpenhauptkamm, Goldberggruppe Alpenhauptkamm, Niedere Tauern Alpenhauptkamm, Niedere Tauern Nord, Goldberggruppe Nord, Glocknergruppe Nord, Großvenedigergruppe Nord, Oberpinzgauer Grasberge, Kitzbüheler Alpen, Glemmtal, Loferer und Leoganger Steinberge, Chiemgauer Alpen, Heutal, Reiteralpe, Steinernes Meer, Hochkönig, Hagengebirge, Göllstock, Dientner Grasberge, Tennengebirge, Gosaukamm, Untersbergstock



snowdrift masses near to and distant from ridges, on W/N/E forest rims esp. on Main Tauern Ridge, thin fresh drifts on N/E/SW ridges



transitions from shallow to deep snow, very steep and mostly shady

## Danger zones where snow is shallow in transitions. Heed foehn-induced drifts on Main Tauern Ridge.

Avalanche danger above 2000 m is MODERATE (2), elsewhere danger is LOW.

Caution is urged in shady and high-alpine steep zones where the snow is shallow and in steep transitions and gullies, where large additional loading can trigger a slab and avalanches can grow to medium-to-large size. Most danger zones occur on W/N/E facing slopes in terrain distant from ridges and in steep gullies.

The fresh, thin, small snowdrift patches on N/E/SW facing ridgeline slopes are easily triggered, the greatest risk is being forced to fall. In sun-drenched rocky steep terrain, naturally triggered small-to-medium loose-snow avalanches are possible.

### Snowpack structure

There was 10-20 cm of fresh snow registered widespread, loose powder atop a compact old snowpack. Near ridges the surface is wind-impacted and these effect increase with ascending altitude. At high and high-alpine altitudes there are thin snowdrifts generated by N/NW winds atop a loose base which are prone to triggering.

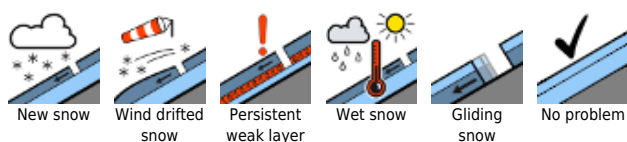
Particularly on the Main Tauern Ridge there are snowdrifts - now blanketed - generated by Thursday's foehn wind. Inside the old snowpack are soft layers of faceted crystals. This layer is currently triggerable only in isolated cases.

### Weather

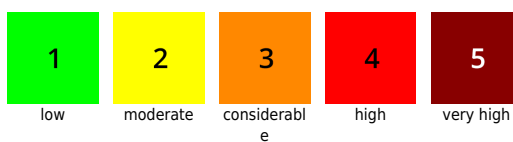
On Sunday, low lying residual cloud will disperse, along with the fogbanks, in the morning. Then follows unimpeded sunshine. At 2000 m: -4 degrees.

On Monday, sunshine and outstanding visibility. Cold. Northerly winds will intensify somewhat in high-altitude zones.

### Avalanche problems



### Danger ratings



### Expositions



**27.02.2022**

**Outlook**

Little change.

---

**Avalanche problems**



New snow



Wind drifted snow



Persistent weak layer



Wet snow

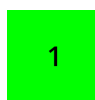


Gliding snow



No problem

**Danger ratings**



1

low



2

moderate



3

considerable



4

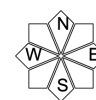
high



5

very high

**Expositions**



**Ankogelgruppe, Muhr, Niedere Tauern Süd**



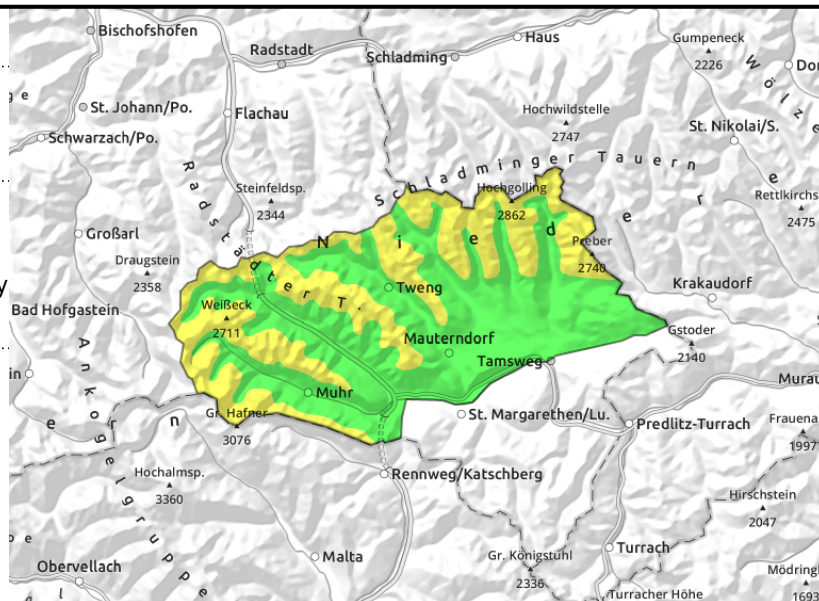
forestline



transitions from shallow to deep snow, shallow-snow zones, very steep and generally shady



older snowdrift patches distant from ridges, triggerable by large additional loading, few spots



**Head shallow-snow zones and transitions**

Avalanche danger above 2000 m is MODERATE (2), below that altitude danger is LOW (1).

Caution urged in shallow-snow zones on shady north-facing slopes and in high alpine steep terrain, where large additional loading can trigger a hidden persistent weak layer.

The older snowdrift masses from the recent northerly wind can sometimes be triggered by large additional loading, i.e. if the fresher drifts trigger. Potential avalanches can grow to medium size. Most danger zones occur in E/S/W facing slopes distant from ridges and in steep gullies.

**Snowpack structure**

Hardened surfaces dominate. There is only a small amount of fresh snow, transported by strong N/NW winds, generating thin, instable snowdrift patches which now cover the somewhat firmer snowdrifts from the early part of the week.

The old snowpack has settled well, is topped by a firm melt-freeze crust. Inside the old snowpack are soft layers of faceted crystals, which in unfavorable circumstances could provide a fracture point for slab avalanches.

**Weather**

On Sunday, low lying residual cloud will disperse, along with the fogbanks, in the morning. Then follows unimpeded sunshine. At 2000 m: -4 degrees.

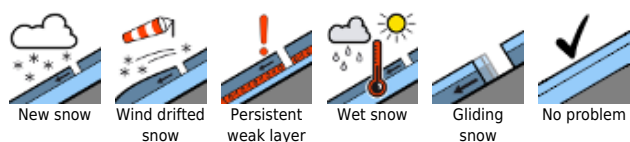
On Monday, sunshine and outstanding visibility. Cold. Northerly winds will intensify somewhat in high-altitude zones.

**Outlook**

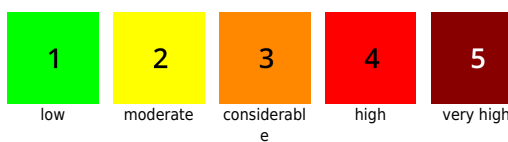
Little change.

Translated by Jeffrey McCabe, [www.creativtrans.com](http://www.creativtrans.com)

**Avalanche problems**



**Danger ratings**



**Expositions**

