

## Moderate danger of slab avalanches above 2000 m, a bit of fresh snow, poor visibility

	Nockberge		
	Untersbergstock, Osterhorngruppe, Gamsfeldgruppe, Pongauer Grasberge, Niedere Tauern Nord		
	2000 m Tennengebirge, Gosaukamm, Steinernes Meer, Hochkönig, Hagengebirge, Göllstock, Chiemgauer Alpen, Heutal, Reiteralpe, Loferer und Leoganger Steinberge, Kitzbüheler Alpen, Glemmtal, Oberpinzgauer Grasberge, Dientner Grasberge, Goldberggruppe Nord, Glocknergruppe Nord, Großvenedigergruppe Nord, Niedere Tauern Alpenhauptkamm		
	2000 m Großvenedigergruppe Alpenhauptkamm, Glocknergruppe Alpenhauptkamm, Goldberggruppe Alpenhauptkamm		
	2000 m Ankogelgruppe, Muhr, Niedere Tauern Süd		

### Avalanche problems



### Danger ratings



### Expositions

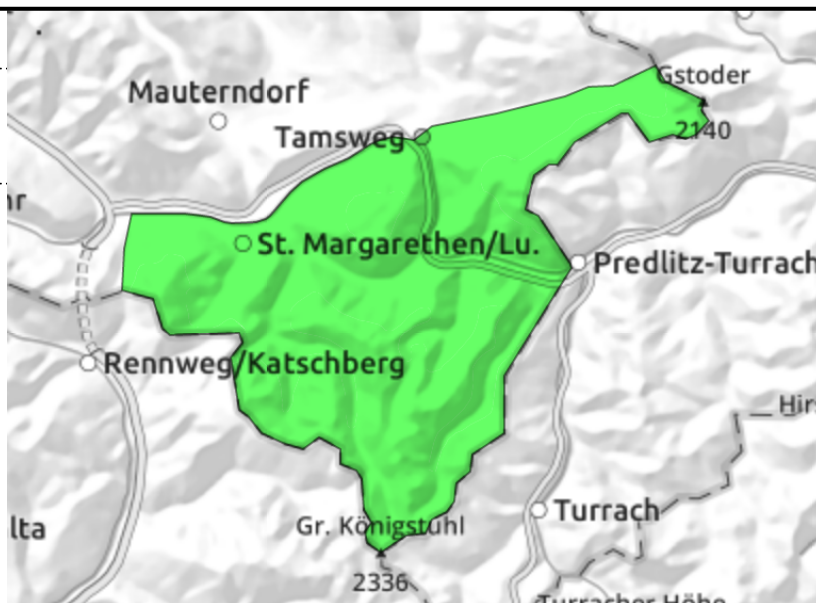


**26.02.2022**

**Nockberge**



very few danger zones, small persistent weak layer problem



**Only few avalanche prone locations. Persistent weak layer.**

Avalanche danger continues to be LOW. The snowpack is relatively stable. Only in very few spot can a slab be triggered by large additional loading, most likely where snow is shallow in transitions from shallow to deep snow in extremely steep north-facing terrain. Avalanches can grow to medium size.

**Snowpack structure**

The snowpack has settled well, shows immense signs of stormy winter winds. The most recent snowdrift accumulations are well consolidated. Surfaces are melt-freeze encrusted or hard. Above the treeline the terrain is windblown. Snow fills the bowls. Inside the old snow are weak layers of faceted crystals which are not currently a threat.

**Weather**

On Saturday it will be clear and sunny, but cold and stormy. Brisk northerly winds at 50-60 km/hr. At 2000 m: -11 degrees.

On Sunday, unimpeded sunshine. Fogbanks will recede in the morning. At 2000 m: -7 degrees.

**Outlook**

Little change.

**Avalanche problems**



**Danger ratings**



**Expositions**



**26.02.2022**

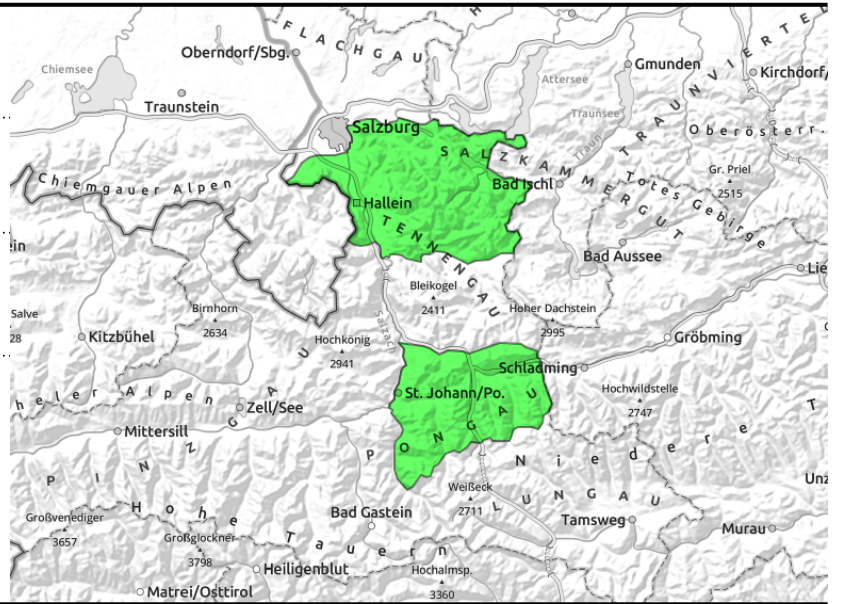
**Untersbergstock, Osterhorngruppe,  
Gamsfeldgruppe, Pongauer Grasberge, Niedere  
Tauern Nord**



very few danger zones,  
persistent weak layer



possibly thin fresh snowdrift  
patches near ridges



## Very few danger zones, small persistent weak layer problem

Avalanche danger is LOW in general. The snowpack is relatively stable. Only in very few spot can a slab be triggered by large additional loading, most likely where snow is shallow in transitions from shallow to deep snow in extremely steep north-facing terrain. Avalanches can grow to medium size.

### Snowpack structure

There was 5-10 cm of cold powder deposited atop a compact old snowpack surface. Near ridges the surface is wind-impacted, but not much snowdrift was generated. Inside the old snowpack are soft layers of faceted crystals, which are currently not a threat.

### Weather

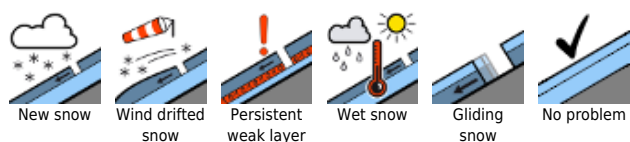
On Saturday it will be clear and sunny, but cold and stormy. Brisk northerly winds at 50-60 km/hr. At 2000 m: -11 degrees.

On Sunday, unimpeded sunshine. Fogbanks will recede in the morning. At 2000 m: -7 degrees.

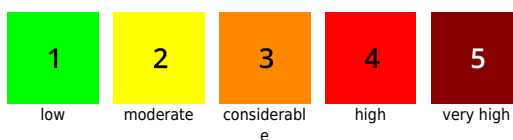
### Outlook

Little change.

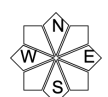
#### Avalanche problems



#### Danger ratings

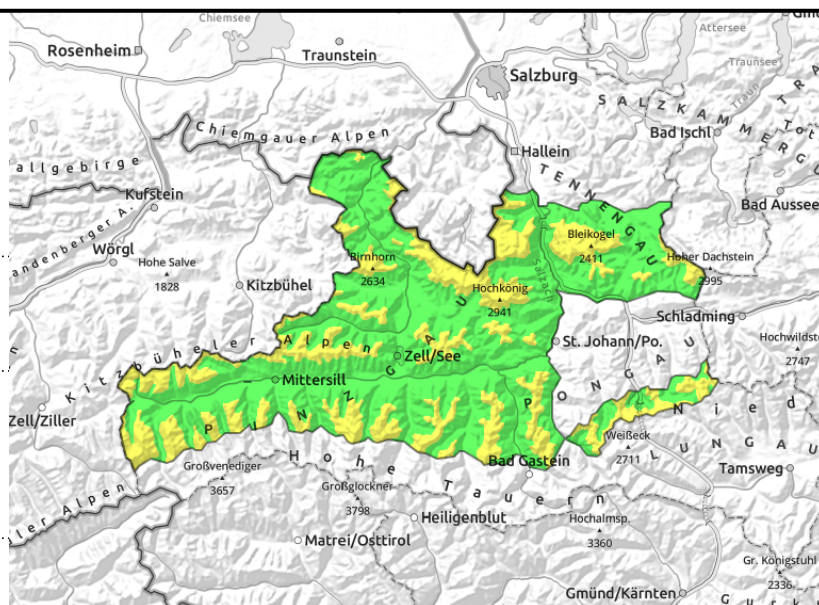


#### Expositions



**26.02.2022**

Tennengebirge, Gosaukamm, Steinernes Meer, Hochkönig, Hagengebirge, Göllstock, Chiemgauer Alpen, Heutal, Reiteralpe, Loferer und Leoganger Steinberge, Kitzbüheler Alpen, Glemmtal, Oberpinzgauer Grasberge, Dientner Grasberge, Goldberggruppe Nord, Glocknergruppe Nord, Großvenedigergruppe Nord, Niedere Tauern Alpenhauptkamm



older snowdrift masses distant from ridges by large additional loading, thin fresh snowdrift patches near ridges



transitions from shallow to deep snow, very steep and mostly shady

## Old snowdrift masses in very steep terrain

Avalanche danger above 2000 m is MODERATE (2), elsewhere danger is LOW.

The old snowpack masses from the middle of the week are well bonded, in isolated cases in very steep terrain a dry-snow slab can trigger by large additional loading. More treacherous comparatively are leeward slopes distant from ridges and shallow-snow zones on shady north-facing slopes. Potential avalanches can be small-to-medium sized.

Potential avalanches can be small-to-medium sized.

The cold fresh snow is only enough for thin, small snowdrift accumulations near ridges. Heightened risk of falling in extremely steep terrain.

## Snowpack structure

There was 5-10 cm of cold powder deposited atop a compact old snowpack surface. Near ridges the surface is wind-impacted, but not much snowdrift was generated.

The old snowpack beneath has settled well, is topped by a firm melt freeze crust. Inside the old snowpack are soft layers of faceted crystals, which are currently not a threat.

## Weather

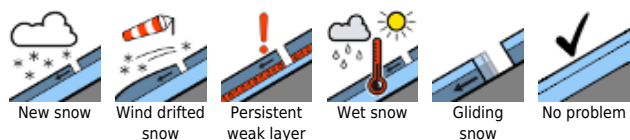
On Saturday it will be clear and sunny, but cold and stormy. Brisk northerly winds at 50-60 km/hr. At 2000 m: -11 degrees, at 3000 m: -17 degrees.

On Sunday, unimpeded sunshine. Fogbanks will recede in the morning. At 2000 m: -7 degrees, at 3000 m: -13 degrees.

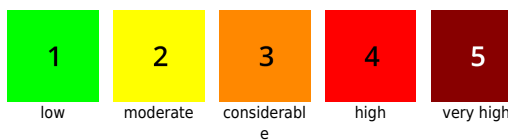
## Outlook

Little change, favorable all in all

### Avalanche problems



### Danger ratings



### Expositions



**26.02.2022**

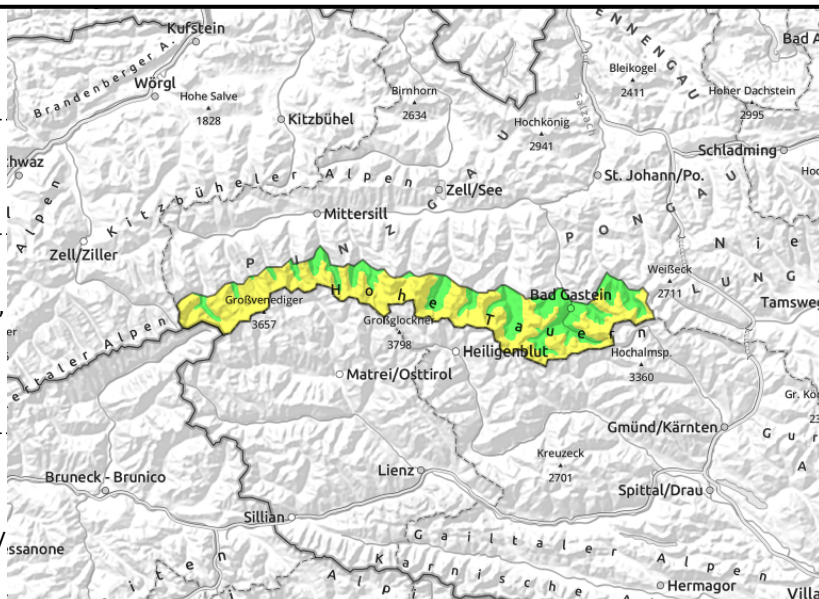
**Großvenedigergruppe Alpenhauptkamm,  
Glocknergruppe Alpenhauptkamm, Goldberggruppe  
Alpenhauptkamm**



older drifts from recent foehn near to and distant from ridges, also at forest rims (W/N/E), thin fresh snowdrift patches near ridges (N/E/SW)



transitions from shallow to deep snow, shallow-snow zones, very steep and generally shady



## Caution urged towards shallow-snow zones and old foehn-induced snowdrifts

Avalanche danger above 2000 m is MODERATE (2), below that altitude danger is LOW (1).

Caution urged in shallow-snow zones on shady north-facing slopes and in high alpine steep terrain, where large additional loading can trigger a hidden persistent weak layer.

The older foehn-induced snowdrifts from Thursday are still triggerable in places by large additional loading. Potential avalanches can grow to medium-to-large size. The most danger zones occur in W/N/E aspect in terrain distant from ridges and in steep gullies.

The cold fresh snow from today and yesterday is enough only for thin, small snowdrift patches near ridges. Heightened risk of falling in extremely steep terrain.

### Snowpack structure

There was 5-10 cm of cold powder deposited atop a compact old snowpack surface. Near ridges the surface is wind-impacted, but not much snowdrift was generated.

The old snowpack beneath has settled well, also the recent layers of drifts from foehn wind on Thursday have bonded with the soft layers beneath them. Inside the old snowpack are soft layers of faceted crystals, which are currently not a threat.

### Weather

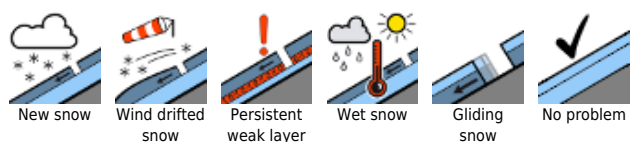
On Saturday it will be clear and sunny, but cold and stormy. Brisk northerly winds at 50-60 km/hr. At 2000 m: -11 degrees.

On Sunday, unimpeded sunshine. Fogbanks will recede in the morning. At 2000 m: -7 degrees.

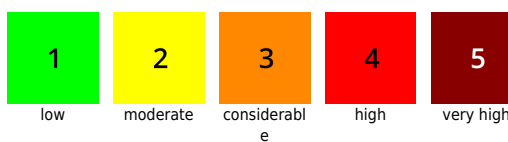
### Outlook

Little change on Sunday

#### Avalanche problems



#### Danger ratings





#### Expositions





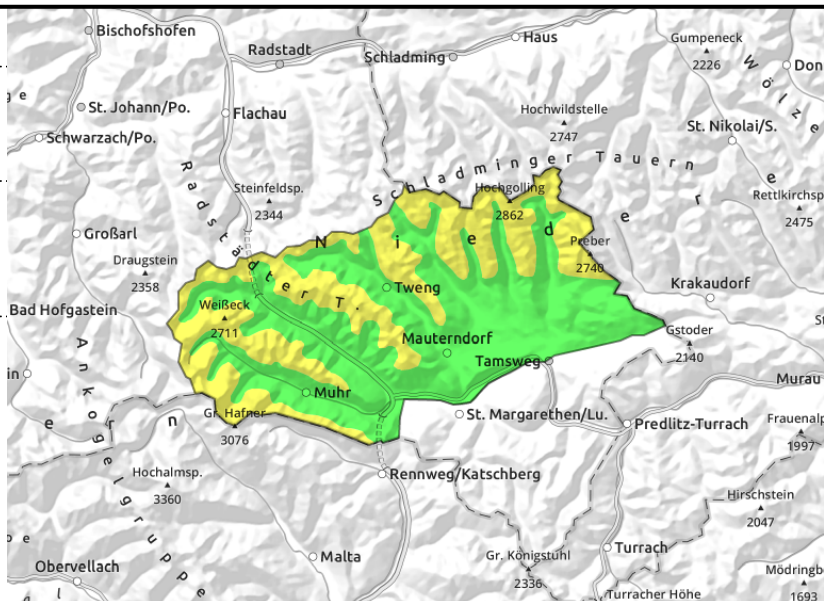
**26.02.2022**

**Ankogelgruppe, Muhr, Niedere Tauern Süd**



  transitions from shallow to deep snow, very steep, mostly shady

  older snowdrift masses distant from ridgelines, by large additional loading, rare steep slopes



**Caution urged towards shallow-snow zones and transitions**

Avalanche danger above 2000 m is MODERATE (2), below that altitude danger is LOW (1). Caution urged in shallow-snow zones on shady north-facing slopes and in high alpine steep terrain where large additional loading can trigger a hidden weak persistent layer. The older snowdrifts from the last bout of northerly wind are still triggerable in places by large additional loading. Potential avalanches can be medium size. Most danger zones occur in E/S/W aspects in terrain distant from ridges and in steep gullies.

**Snowpack structure**

Only a few cm of fresh snow from the north. Most of the surfaces are hardened. The old snowpack has settled well, is topped by a melt-freeze crust. Inside the old snowpack are hidden soft layers of faceted crystals, these weak layers are currently not a threat.

**Weather**

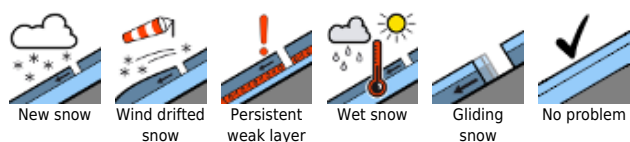
On Saturday it will be cloud towards the Tauern, sunny further south, but cold and stormy. Brisk northerly winds at 50-60 km/hr. At 2000 m: -11 degrees. On Sunday, unimpeded sunshine. Fogbanks will recede in the morning. At 2000 m: -7 degrees.

**Outlook**

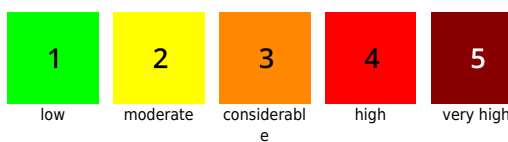
Little change on Sunday

Translated by Jeffrey McCabe, [www.creativtrans.com](http://www.creativtrans.com)

**Avalanche problems**



**Danger ratings**



**Expositions**

