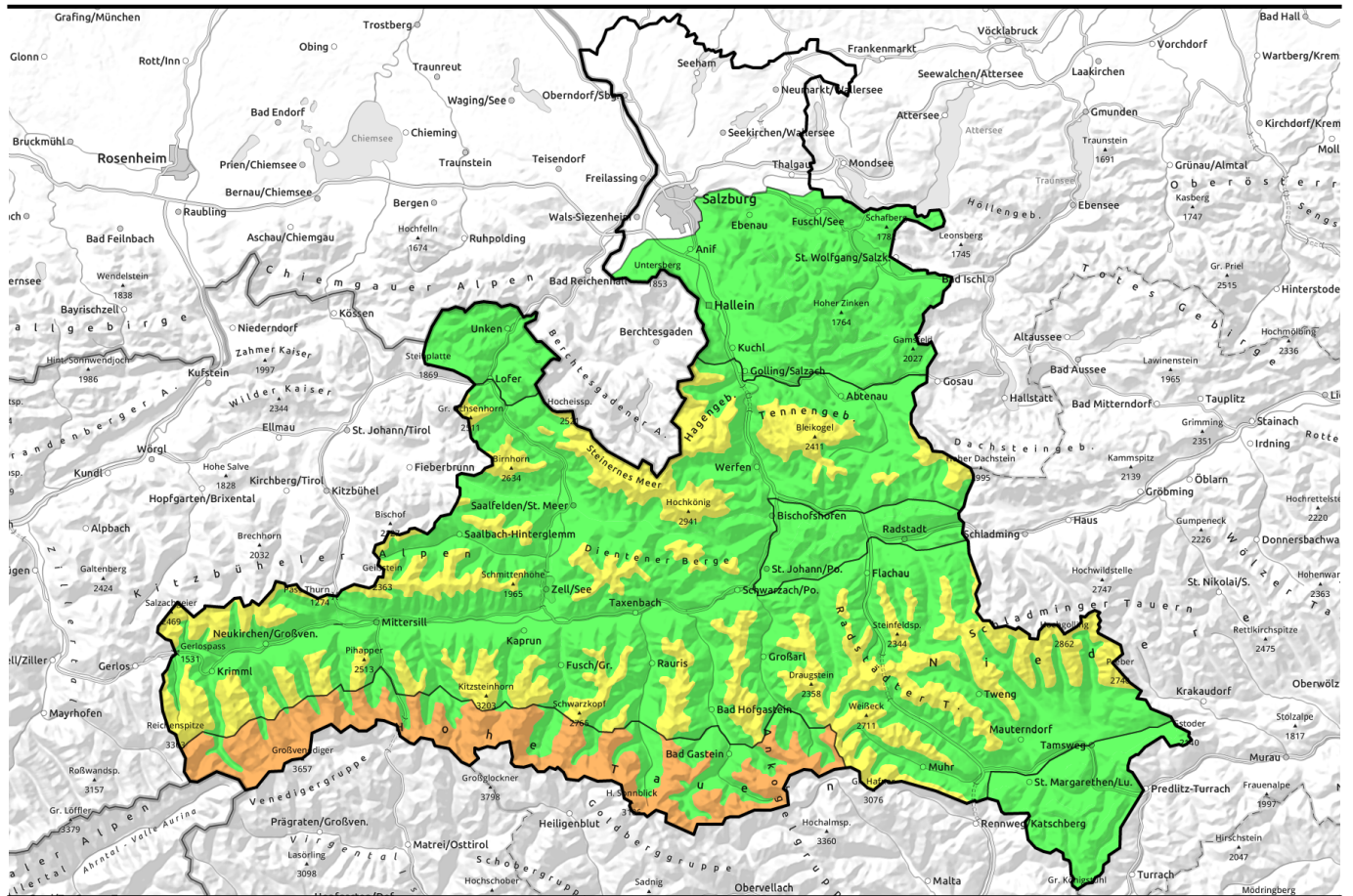


25.02.2022



Dropping temperatures. Avoid old snowdrift accumulations.

	<p>Osterhorngruppe, Gamsfeldgruppe, Untersbergstock, Chiemgauer Alpen, Heutal, Reiteralpe, Nockberge, Pongauer Grasberge</p>		
	<p>1800 m</p>	<p>Tennengebirge, Gosaukamm, Steinernes Meer, Hochkönig, Hagengebirge, Göllstock, Loferer und Leoganger Steinberge, Kitzbüheler Alpen, Glemmtal, Oberpinzgauer Grasberge, Glocknergruppe Nord, Dientner Grasberge, Niedere Tauern Nord, Goldberggruppe Nord, Niedere Tauern Alpenhauptkamm, Niedere Tauern Süd, Ankogelgruppe, Muhr, Großvenedigergruppe Nord</p>	
	<p>2000 m</p>	<p>Großvenedigergruppe Alpenhauptkamm, Glocknergruppe Alpenhauptkamm, Goldberggruppe Alpenhauptkamm</p>	

Avalanche problems



Danger ratings

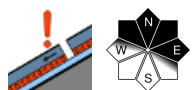


Expositions

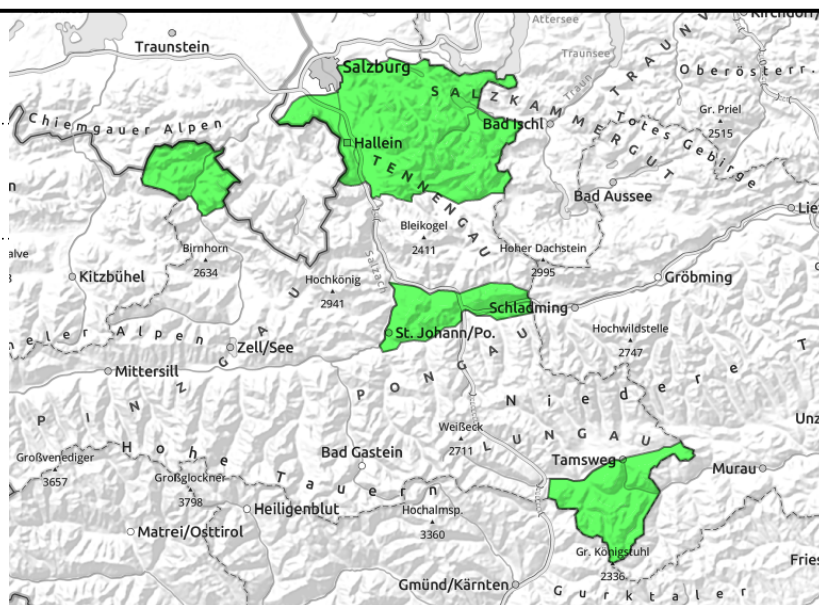


25.02.2022

Osterhorngruppe, Gamsfeldgruppe,
Untersbergstock, Chiemgauer Alpen, Heutal,
Reiteralpe, Nockberge, Pongauer Grasberge



very few danger zones,
persistent weak layer



Only few avalanche prone locations. Persistent weak layer.

Avalanche danger is LOW, the snowpack is rather stable. **In few places can large additional loading trigger a slab avalanche**, most likely in shallow-snow transitions to deeper snow on shady steep north-facing slopes. Avalanches can reach medium size.

Snowpack structure

The snowpack has settled well, shows immense signs of stormy winter winds. The most recent snowdrift accumulations are well consolidated. Surfaces are melt-freeze encrusted or hard. Above the treeline the terrain is windblown. Snow fills the bowls. Inside the old snow are weak layers of faceted crystals which are not currently a threat.

Weather

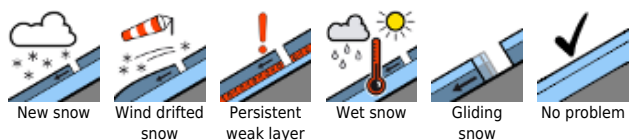
On **Friday**, variable conditions, low clouds will pass through. Adequate daytime visibility, loose convective clouds, noticeably colder, moderate NW winds (30-40 km/hr). At 2000 m: -4 degrees.

On **Saturday** morning, reduced visibility due to heavy cloud and snowfall (minor). As of midday, the clouds will often disperse. Strong northerly wind (gusts at 60 km/hr). At 2000 m: -11 degrees.

Outlook

Little change.

Avalanche problems



Danger ratings

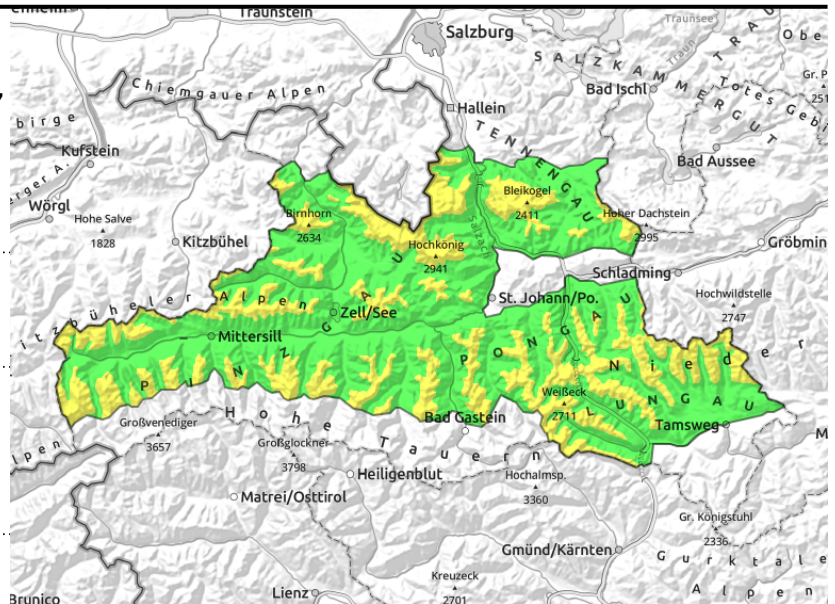


Expositions



25.02.2022

Tennengebirge, Gosaukamm, Steinernes Meer, Hochkönig, Hagengebirge, Göllstock, Loferer und Leoganger Steinberge, Kitzbüheler Alpen, Glemmtal, Oberpinzgauer Grasberge, Glocknergruppe Nord, Dientner Grasberge, Niedere Tauern Nord, Goldberggruppe Nord, Niedere Tauern Alpenhauptkamm, Niedere Tauern Süd, Ankogelgruppe, Muhr, Großvenedigergruppe Nord



drifted masses near to and distant from ridges, large additional loading, small-to-medium



transitions from shallow to deep snow, very steep, mostly shady slopes

Old snowdrifts on very steep slopes should be avoided.

Avalanche danger above 1800 m is MODERATE, below that altitude danger is LOW.

The snowdrift accumulations from Tuesday/Wednesday are well consolidated. In few places can large additional loading trigger a slab avalanche, most likely in shallow-snow transitions to deeper snow on shady steep north-facing slopes.

Wild opposites occur in backcountry: exposed zones are hard, windblown, very few drifts. Leeward slopes, gullies, are filled to the brim.

Snowpack structure

Due to warmth and sun the fresh snow and drifts have settled and consolidated. Sink-in depths are receded noticeably, the proneness to triggering has decreased. Above 2000 m the fresh drifts generated by Thursday's foehn wind and deposited atop a soft base are still prone to triggering. The old snowpack beneath has settled, is topped by a firm melt-freeze crust. Inside the snowpack are hidden soft layers of faceted crystals, but these layer are currently not a threat.

Weather

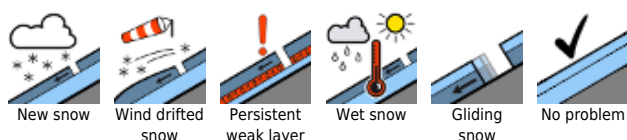
On **Friday**, variable conditions, low clouds will pass through. Adequate daytime visibility, loose convective clouds, noticeably colder, moderate NW winds (30-40 km/hr). At 2000 m: -4 degrees, at 3000 m: -16 degrees.

On **Saturday** morning, reduced visibility due to heavy cloud and snowfall (minor). As of midday, the clouds will often disperse. Strong northerly wind (gusts at 60 km/hr). At 2000 m: -11 degrees, at 3000 m: -17 degrees.

Outlook

Little change. Overall favorable.

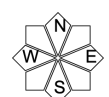
Avalanche problems



Danger ratings



Expositions



25.02.2022

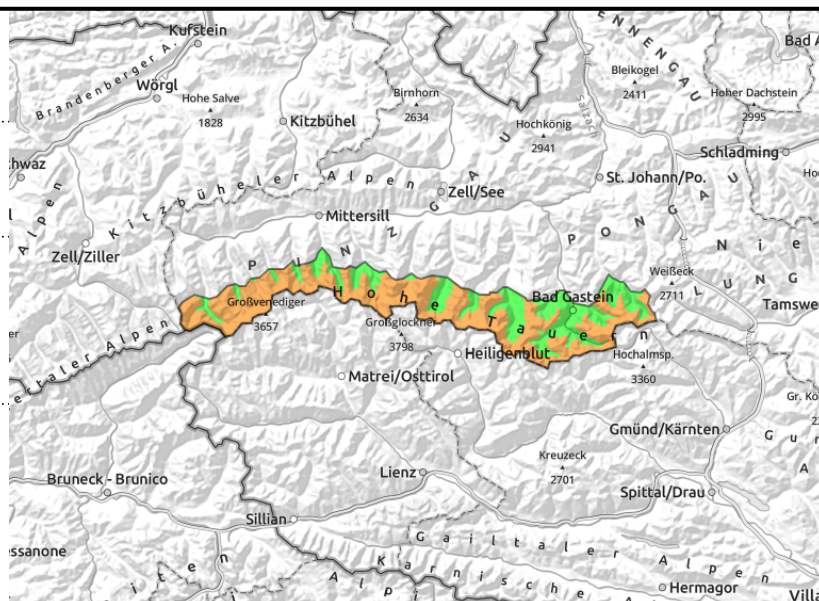
**Großvenedigergruppe Alpenhauptkamm,
Glocknergruppe Alpenhauptkamm, Goldberggruppe
Alpenhauptkamm**



drifted masses near to and distant from ridges, large additional loading, small-to-medium



transitions from shallow to deep snow, very steep, mostly shady slopes



Foehn-induced snowdrifts from Thursday still delicate

Avalanche danger above 2000 m is CONSIDERABLE, below that altitude danger is LOW.

Wild opposites occur in backcountry: exposed zones are hard, windblown, very few drifts. Leeward slopes, gullies, are filled to the brim.

Foehn-induced snowdrifts from yesterday can still be triggered by the weight of one sole person.

Potential avalanches can grow to medium-to-large size. Most danger zones are in W/N/E aspects and in steep gullies. Caution urged in steep terrain distant from ridges down to steep forest lanes.

Caution also urged in shallow-snow zones on shady north-facing slopes and in high-alpine steep terrain, where large additional loading can triggered hided weak layers in the snowpack.

Snowpack structure

Due to warmth and sun the fresh snow and drifts have settled and consolidated. Sink-in depths are receded noticeably, the proneness to triggering has decreased. Above 2000 m the fresh drifts generated by Thursday's foehn wind and deposited atop a soft base are still prone to triggering.

The old snowpack beneath has settled, is topped by a firm melt-freeze crust. Inside the snowpack are hidden soft layers of faceted crystals, but these layer are currently not a threat.

Weather

On **Friday**, variable conditions, low clouds will pass through. Adequate daytime visibility, loose convective clouds, noticeably colder, moderate NW winds (30-40 km/hr). At 2000 m: -4 degrees, at 3000 m: -16 degrees.

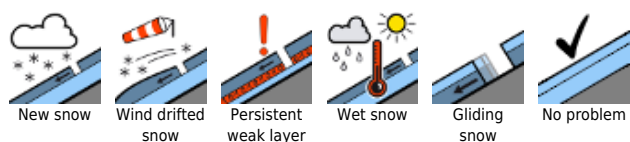
On **Saturday** morning, reduced visibility due to heavy cloud and snowfall (minor). As of midday, the clouds will often disperse. Strong northerly wind (gusts at 60 km/hr). At 2000 m: -11 degrees, at 3000 m: -17 degrees.

Outlook

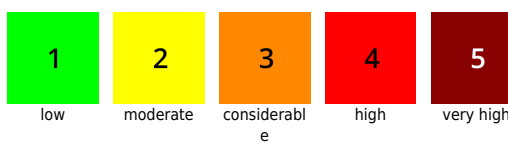
Snowdrift problem will decrease. Caution urged in gullies and in extended northern aspects.

Translated by Jeffrey McCabe, www.creativtrans.com

Avalanche problems



Danger ratings



Expositions

