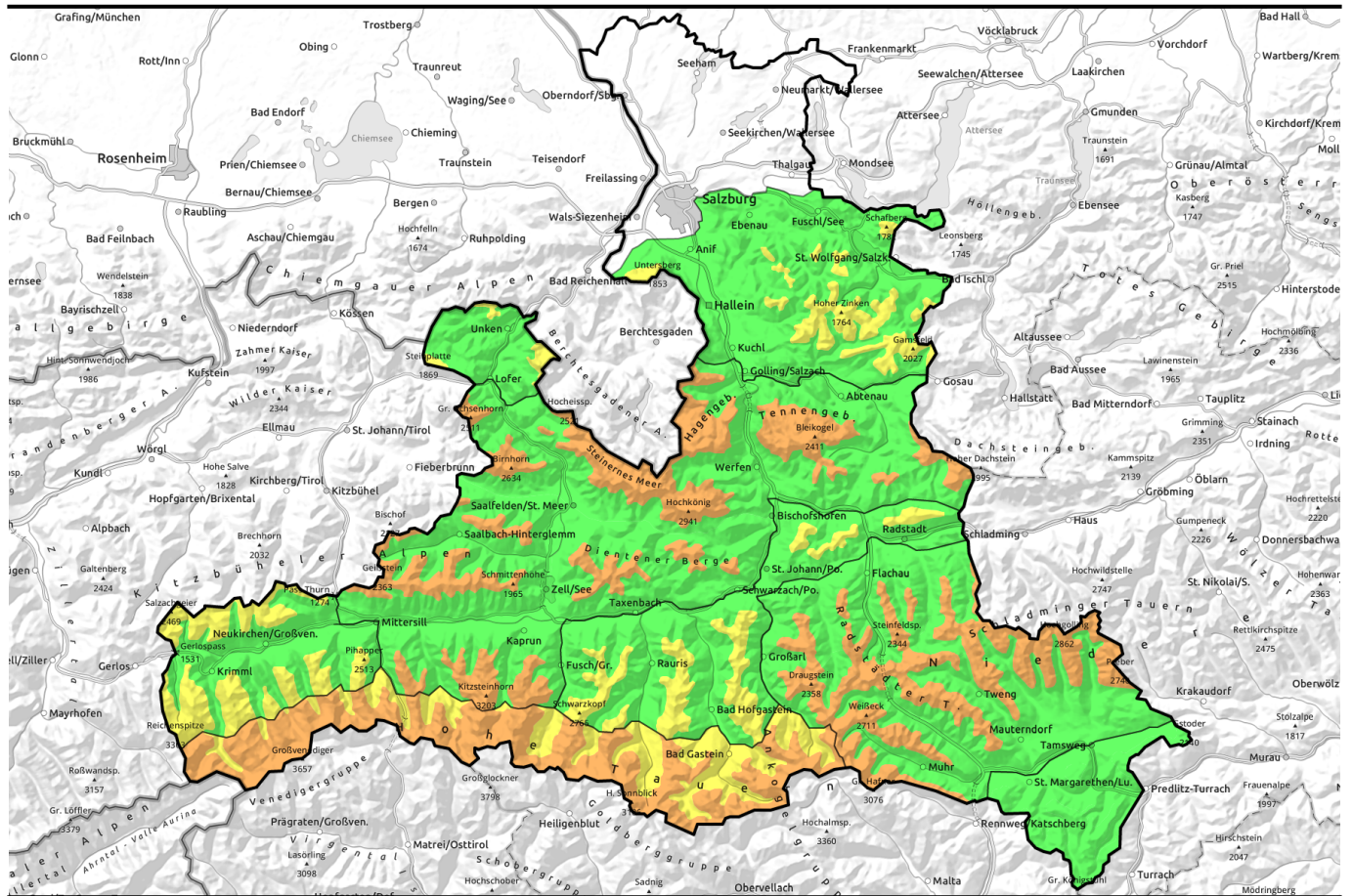


24.02.2022



Generally avoid snowdrift masses. Treacherous on Main Tauern Ridge: foehn storm!

	<p>forestline Osterhorngruppe, Gamsfeldgruppe, Untersbergstock, Chiemgauer Alpen, Heutal, Reiteralpe, Oberpinzgauer Grasberge, Großvenedigergruppe Nord, Goldberggruppe Nord, Pongauer Grasberge</p>	
	<p>1800 m Tennengebirge, Gosaukamm, Steinernes Meer, Hochkönig, Hagengebirge, Göllstock, Loferer und Leoganger Steinberge, Kitzbüheler Alpen, Glemmtal, Dientner Grasberge, Glocknergruppe Nord, Niedere Tauern Nord, Niedere Tauern Alpenhauptkamm, Niedere Tauern Süd, Ankogelgruppe, Muhr</p>	
	<p>forestline Glocknergruppe Alpenhauptkamm, Großvenedigergruppe Alpenhauptkamm, Goldberggruppe Alpenhauptkamm</p>	
	<p>Nockberge</p>	

Avalanche problems



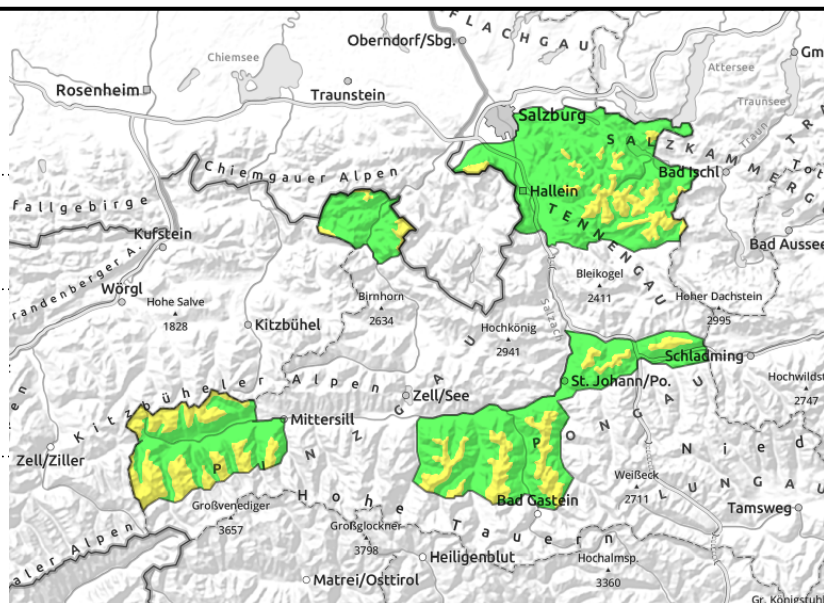
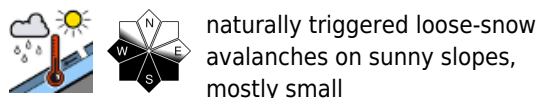
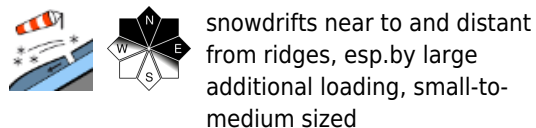
Danger ratings



Expositions



Osterhorngruppe, Gamsfeldgruppe, Untersbergstock, Chiemgauer Alpen, Heutal, Reiteralpe, Oberpinzgauer Grasberge, Großvenedigergruppe Nord, Goldberggruppe Nord, Pongauer Grasberge



Avoid the most recent snowdrift accumulations

Avalanche danger on shady slopes at forest rims and further up is MODERATE (2), otherwise LOW. The snowdrift masses from Tuesday/Wednesday are triggerable especially by large additional loading. Potential avalanches can be small-to-medium. Most danger zones are in NW/E/SW aspects, particularly in steep terrain distant from ridgelines down as far as steep forest lanes. Backcountry terrain is full of opposites: exposed zones are hard, windblown, often very little snowdrift; leeward zones and gullies are filled to the brim with drifts. Due to warming, naturally triggered loose-snow avalanches are possible on very steep sunny slopes. Small-to-medium sized.

Snowpack structure

The two bouts of snowfall of the last couple of days (10 to 30 cm) have settled somewhat on sunny slopes and below 1800 m. The proneness to triggering has receded. The old snowpack beneath it has settled and is topped by a firm melt-freeze crust. Inside the old snowpack are hidden soft layers of faceted crystals; these layers are currently not a threat.

Weather

On **Thursday**, very sunny. Clouds will pass through. Very good visibility. Light southerly winds. At 2000 m: 1 degree.
 On **Friday**, variably cloudy, clouds will pass through, some minor snowfall is possible in early morning. Sunny phases during the daytime with adequate visibility and light convective cloud. Temperatures will drop noticeably. Moderate NW winds, generally around 30 km/hr in exposed zones. At 2000 m: -4 degrees.

Outlook

Heed old snowpack accumulations. Otherwise favorable conditions.

Avalanche problems



Danger ratings

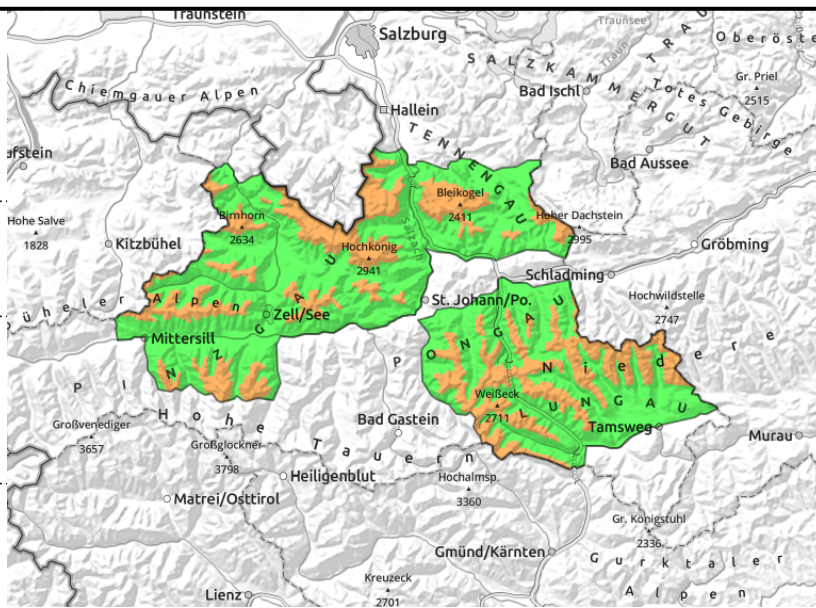




Expositions





24.02.2022

Tennengebirge, Gosaukamm, Steinernes Meer, Hochkönig, Hagengebirge, Göllstock, Loferer und Leoganger Steinberge, Kitzbüheler Alpen, Glemmtal, Dientner Grasberge, Glocknergruppe Nord, Niedere Tauern Nord, Niedere Tauern Alpenhauptkamm, Niedere Tauern Süd, Ankogelgruppe, Muhr



  snowdrifts near to and distant from ridges, in some places easily triggered, small-to-wide ranging

  naturally triggered loose-snow avalanches on sunny slopes, small-to-medium

Avoid the most recent snowdrift accumulations

Avalanche danger above 1800 m is CONSIDERABLE (3), below that altitude danger is LOW. The snowdrift masses from Tuesday/Wednesday are triggerable even by minimum additional loading. Potential avalanches can be small-to-medium. Most danger zones are in NW/E/SW aspects, particularly in steep terrain distant from ridgelines down as far as steep forest lanes. Backcountry terrain is full of opposites: exposed zones are hard, windblown, often very little snowdrift; leeward zones and gullies are filled to the brim with drifts. Due to warming, naturally triggered loose-snow avalanches are possible on very steep sunny slopes below 2000 m. Small-to-medium sized.

Snowpack structure

The two bouts of snowfall of the last couple of days (10 to 30 cm) have settled somewhat on sunny slopes and below 1800 m. The proneness to triggering has receded. The old snowpack beneath it has settled and is topped by a firm melt-freeze crust. Inside the old snowpack are hidden soft layers of faceted crystals; these layers are currently not a threat.

Weather

On **Thursday**, very sunny. Clouds will pass through. Very good visibility. Light southerly winds. At 2000 m: 1 degree.

On **Friday**, variably cloudy, clouds will pass through, some minor snowfall is possible in early morning. Sunny phases during the daytime with adequate visibility and light convective cloud. Temperatures will drop noticeably. Moderate NW winds, generally around 30 km/hr in exposed zones. At 2000 m: -4 degrees, at 3000 m: -16 degrees.

Outlook

Snowdrift problem will recede, but remain the main threat.

Avalanche problems



Danger ratings



Expositions



24.02.2022

**Glocknergruppe Alpenhauptkamm,
Großvenedigergruppe Alpenhauptkamm,
Goldberggruppe Alpenhauptkamm**



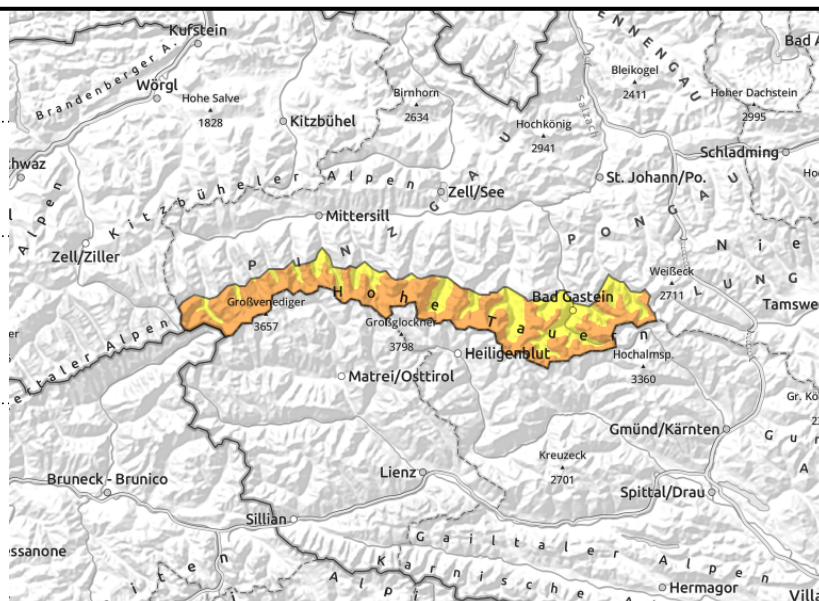
forestline



snowdrifts near to and distant from ridges, esp. by large additional loading, small-to-medium sized



naturally triggered loose-snow avalanches on sunny slopes, small-to-medium sized



Foehn storm. Instable snowdrift accumulations.

Avalanche danger above the treeline is **CONSIDERABLE (3)**, below that altitude danger is **MODERATE**. The snowdrift masses from Tuesday/Wednesday are triggerable even by minimum additional loading. Potential avalanches can be small-to-medium. Most danger zones are in W/N/E aspects, particularly in steep terrain distant from ridgelines down as far as steep forest lanes.

Backcountry terrain is full of opposites: exposed zones are hard, windblown, often very little snowdrift; leeward zones and gullies are filled to the brim with drifts.

Due to warming, naturally triggered loose-snow avalanches are possible on very steep sunny slopes below 2000 m. Small-to-medium sized.

Snowpack structure

The two bouts of snowfall of the last couple of days (10 to 30 cm) have settled somewhat on sunny slopes and below 1800 m. The proneness to triggering has receded.

The old snowpack beneath it has settled and is topped by a firm melt-freeze crust. Inside the old snowpack are hidden soft layers of faceted crystals; these layers are currently not a threat.

Weather

On **Thursday**, very sunny. Very good visibility. Strong southerly foehn wind (**50 to over 60 km/hr**). At 2000 m: 1 degree.

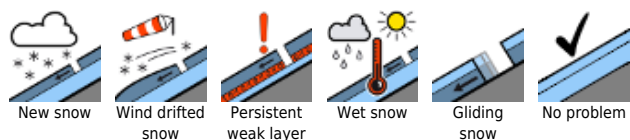
On **Friday**, variably cloudy, clouds will pass through, some minor snowfall is possible in early morning. Sunny phases during the daytime with adequate visibility and light convective cloud.

Temperatures will drop noticeably. Moderate NW winds, generally around 30 km/hr in exposed zones. At 2000 m: -4 degrees, at 3000 m: -16 degrees.

Outlook

Still a snowdrift problem above the treeline, especially on north-facing slopes and in gullies.

Avalanche problems



Danger ratings



Expositions

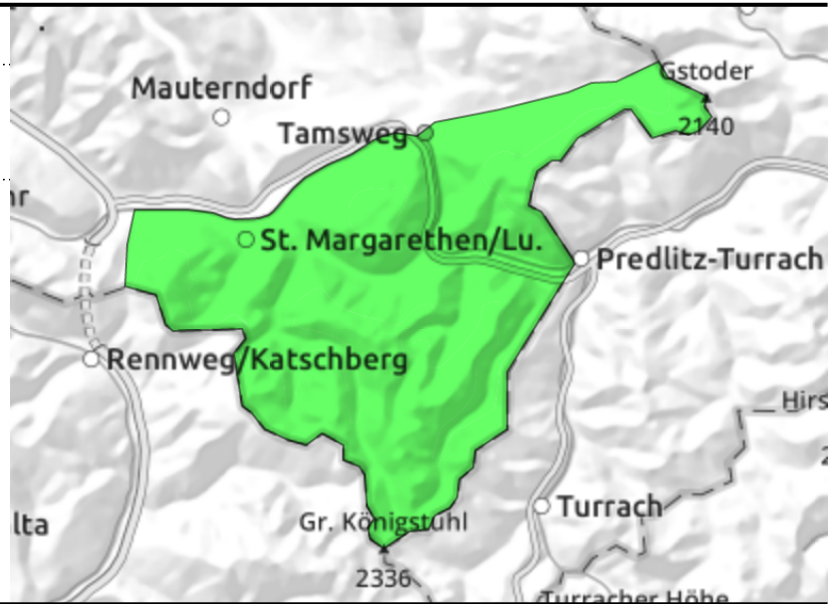


24.02.2022

Nockberge



very few danger zones; minor persistent weak layer



Hardly any avalanche prone locations. Persistent weak layer.

Avalanche danger continues to be LOW. Hardly any danger zones, weak layers inside the snowpack can be triggered only in very isolated cases by large additional loading, most likely in extended northern aspects.

Snowpack structure

The snowpack has settled well, shows immense signs of wind impact. Hardly any fresh snow recently, only a few centimetres. The surfaces are encrusted. Above the treeline the terrain is utterly windblown, in the gullies are metre-deep drifts. Inside the old snowpack are soft layers of faceted crystals, but are currently not a threat.

Weather

On **Thursday**, very sunny. Very good visibility. Light southerly winds. At 2000 m: 1 degree.
 On **Friday**, variably cloudy, clouds will pass through, some minor snowfall is possible in early morning. Sunny phases during the daytime with adequate visibility and light convective cloud. Temperatures will drop noticeably. Moderate NW winds, generally around 30 km/hr in exposed zones. At 2000 m: -4 degrees.

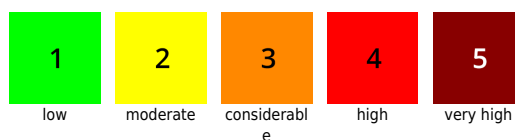
Outlook

Translated by Jeffrey McCabe, www.creativtrans.com

Avalanche problems



Danger ratings



Expositions

