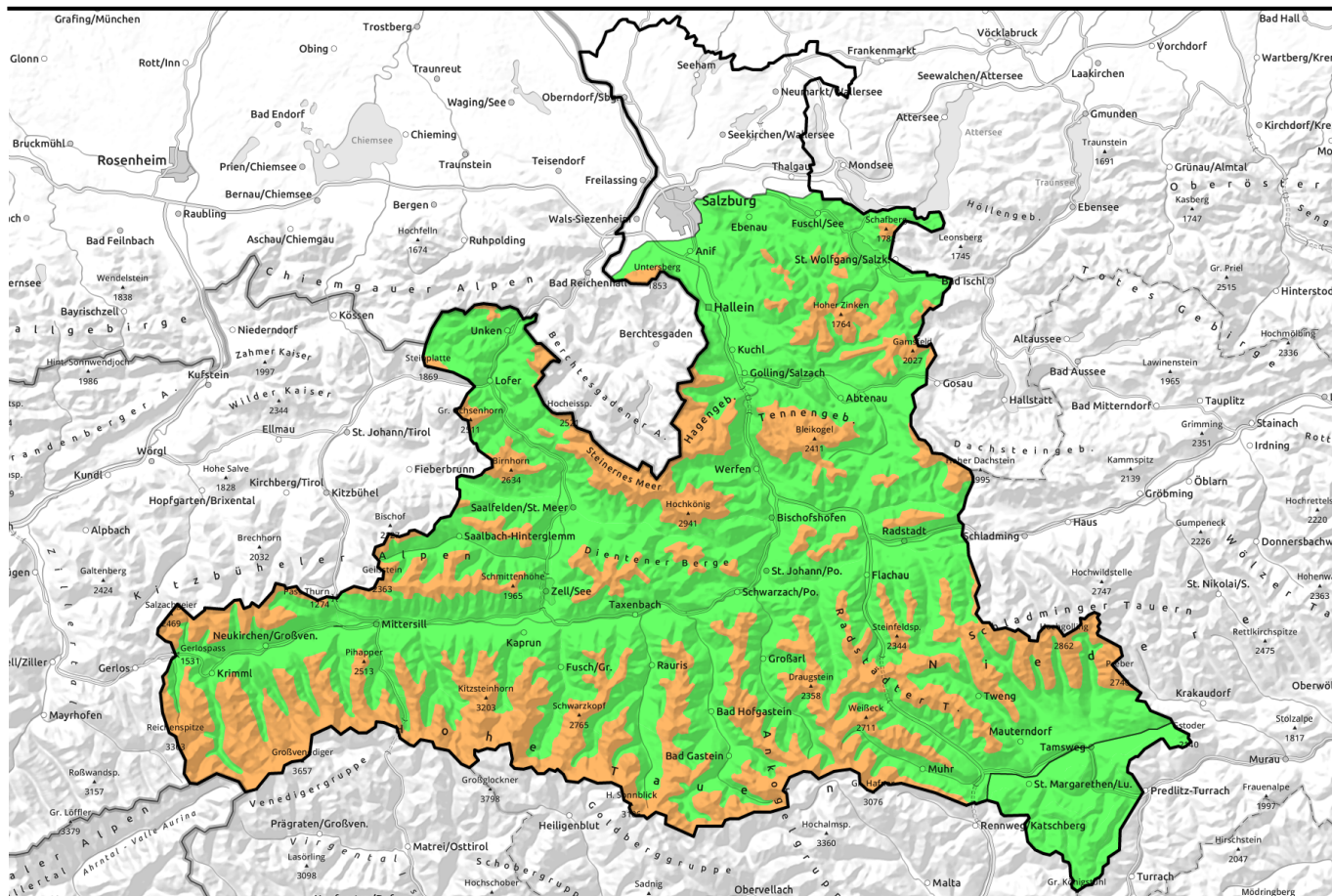


23.02.2022



The next bout of snowdrift accumulations is on the way. Numerous danger zones for skiers/boarders.



Nockberge

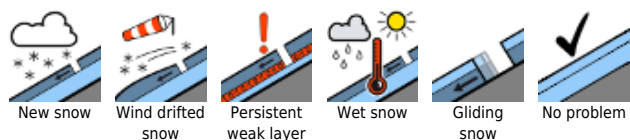


forestline

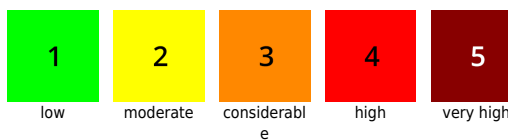
Chiemgauer Alpen, Heutal, Reiteralpe, Loferer und Leoganger Steinberge, Steinernes Meer, Hochkönig, Hagengebirge, Göllstock, Kitzbüheler Alpen, Glemmtal, Oberpinzgauer Grasberge, Großvenedigergruppe Nord, Großvenedigergruppe Alpenhauptkamm, Glocknergruppe Nord, Glocknergruppe Alpenhauptkamm, Dientner Grasberge, Pongauer Grasberge, Niedere Tauern Alpenhauptkamm, Niedere Tauern Süd, Goldberggruppe Nord, Goldberggruppe Alpenhauptkamm, Ankogelgruppe, Muhr, Niedere Tauern Nord, Tennengebirge, Gosaukamm, Osterhorngruppe, Gamsfeldgruppe, Untersbergstock



Avalanche problems



Danger ratings



Expositions

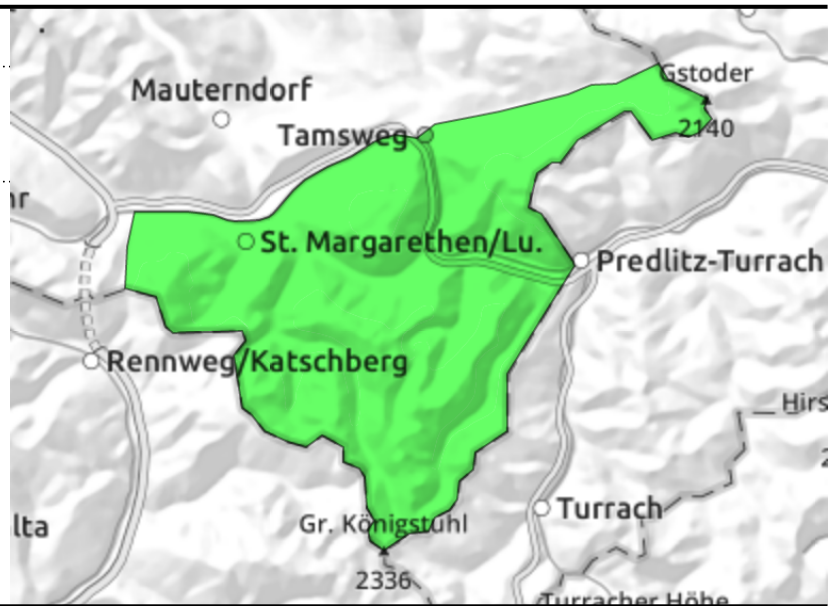


23.02.2022

Nockberge



very few danger zones in backcountry terrain; minor persistent weak layer



Snow shows signs of wind-impact - still hardly any danger zones

Avalanche danger is LOW, hardly any danger zones threaten. Weak layers in the old snowpack can be triggered only in isolated cases by large additional loading, most likely in northern aspects.

Snowpack structure

The snowpack has settled well, but shows immense signs of wind impact. Hardly any fresh snow, only a few centimetres, the surfaces are encrusted. Above the treeline, slopes are windblown. In bowls there is more snow. Inside the old snowpack are weak layers of faceted crystals, but are currently not relevant to triggering danger.

Weather

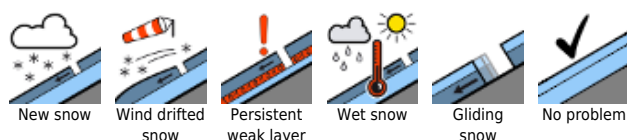
On **Wednesday**, little change. Clouds will pass through, interim sunshine. In the afternoon, generally sunny. Strong to storm-strength NW winds (40-60 km/hr), slackening off rapidly in the afternoon. At 2000 m: -5 degrees.

On **Thursday**, very sunny. Good visibility. Light winds. At 2000 m: +1 degree.

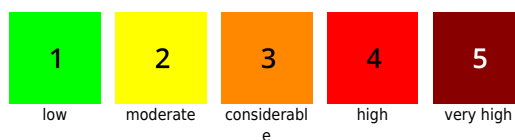
Outlook

Little change.

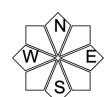
Avalanche problems



Danger ratings

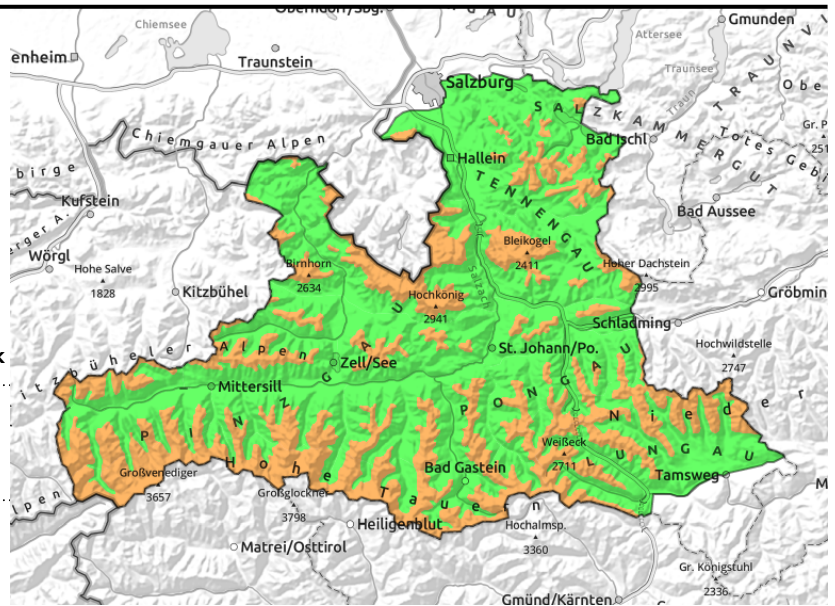


Expositions



23.02.2022

Chiemgauer Alpen, Heutal, Reiteralpe, Loferer und Leoganger Steinberge, Steinernes Meer, Hochkönig, Hagengebirge, Göllstock, Kitzbüheler Alpen, Glemmtal, Oberpinzgauer Grasberge, Großvenedigergruppe Nord, Großvenedigergruppe Alpenhauptkamm, Glocknergruppe Nord, Glocknergruppe Alpenhauptkamm, Dientner Grasberge, Pongauer Grasberge, Niedere Tauern Alpenhauptkamm, Niedere Tauern Süd, Goldberggruppe Nord, Goldberggruppe Alpenhauptkamm, Ankogelgruppe, Muhr, Niedere Tauern Nord, Tennengebirge, Gosaukamm, Osterhorngruppe, Gamsfeldgruppe, Untersbergstock



forestline



snowdrift masses distant from ridges, at forest rims, easily triggered, some shallow, wide-ranging

Snowdrift masses are easily triggered

Avalanche danger above the treeline is **CONSIDERABLE (3)**, below that altitude danger is **LOW**. Fresh snowdrift accumulations can be triggered by the impulse of one sole skier. Potential avalanches can be medium to large sized. Most danger zones occur in N/E/S aspects, and here, mostly in steep terrain distant from ridges down to steep forest lanes. Cross variations are visible in outlying terrain: Exposed zones are hard and windblown, with only little snowdrift. Leeward slopes, gullies, bowls are filled to the brim.

Snowpack structure

Wind and fresh snow in two packages are generating easily triggered snowdrifts in backcountry terrain. Snowfall on Tuesday was cold, loose, the snow/drifts on Wednesday will be more compact, more brittle. The old snowpack has settled well, is usually topped by a melt-freeze crust. Inside the snowpack are soft layers of faceted crystals, usually beneath hard layers of melt-freeze crusts. These weak layer are currently not relevant to triggering.

Weather

On **Wednesday** morning, poor visibility, snow showers. Fresh snow: an additional 10-20 cm. Starting at midday, visibility will improve measurably, sunshine can be expected in the afternoon. Strong to stormy W/NW winds (40-60 km/hr), slackening off noticeably in the afternoon. At 2000 m: -5 degrees; at 3000 m: -11 degrees.

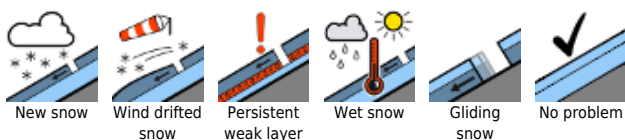
On **Thursday**, very sunny. Good visibility. Light winds. At 2000 m: +1 degree, at 3000 m: -4 degrees.

Outlook

Considerable snowdrift problem above the treeline. Lots of sunshine. Restraint and caution are important.

Translated by Jeffrey McCabe, www.creativtrans.com

Avalanche problems



Danger ratings



Expositions

