

Storm winds, fresh snow: considerable snowdrift situation



Osterhorngruppe, Gamsfeldgruppe, Untersbergstock, Pongauer Grasberge



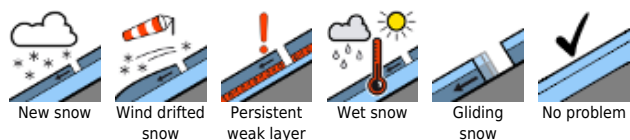
Tennengebirge, Gosaukamm, Steinernes Meer, Hochkönig, Hagengebirge, Göllstock, Chiemgauer Alpen, Heutal, Reiteralpe, Kitzbüheler Alpen, Gemmltal, Oberpinzgauer Grasberge, Großvenedigergruppe Alpenhauptkamm, Glocknergruppe Nord, Großvenedigergruppe Nord, Glocknergruppe Alpenhauptkamm, Dientner Grasberge, Niedere Tauern Nord, Niedere Tauern Alpenhauptkamm, Ankogelgruppe, Muhr, Goldberggruppe Nord, Goldberggruppe Alpenhauptkamm, Niedere Tauern Süd, Loferer und Leoganger Steinberge



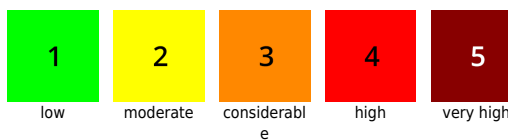
Nockberge



Avalanche problems



Danger ratings



Expositions



22.02.2022

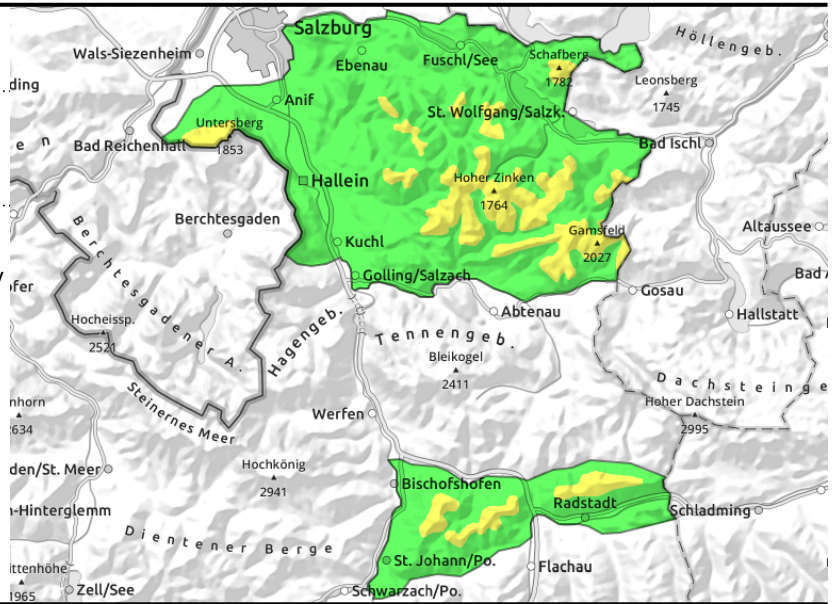
**Osterhorngruppe, Gamsfeldgruppe,
Untersbergstock, Pongauer Grasberge**



forestline



drifted masses distant from ridgelines, at forest rims, easily triggered, most are shallow



STORM! Avoid snowdrifts.

Avalanche danger at and above the treeline is at least MODERATE, below that altitude danger is LOW. Fresh snowdrift masses are triggerable **by the weight of one single person**. Due to limited snowdrift accumulations the danger level is **JUST BARELY MODERATE (2)**. **Potential avalanches can grow to medium size**. Most danger zones exist in N/E/S aspects especially in distant-from-ridgeline terrain down to steep forest lanes.

Snowpack structure

The old snowpack has settled well, is usually topped by a melt-freeze crust. Exposed terrain is utterly windblown, hardened or icy. On top of that the cold fresh snow is deposited amid lots of wind. Fresh snowdrifts are triggered with relative ease.

Inside the snowpack are soft layers of faceted crystals, usually beneath hard layers of melt-freeze crusts. These weak layer are currently not relevant to triggering.

Weather

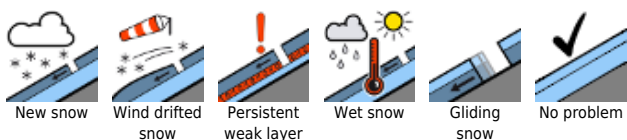
On Tuesday, poor visibility, ongoing snowfall in the morning. In the afternoon the snowfall will pause, visibility improve. Stormy NW winds at 60-80 km/hr will be blowing. Fresh snow between Monday evening and Tuesday evening: 15 to 20 cm. At 2000 m: -8 degrees.

On Wednesday morning poor visibility again, with snow showers. Fresh snow: another 10-15 cm. As of midday, visibility will noticeably improve, and some sunshine can be expected. Stormy NW winds, slackening off in late afternoon. At 2000 m: -6 degrees.

Outlook

Snowdrift problem above the timberline.

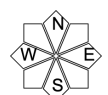
Avalanche problems



Danger ratings

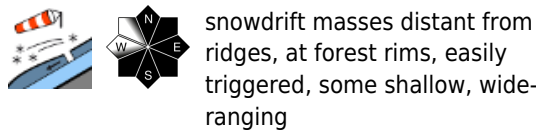
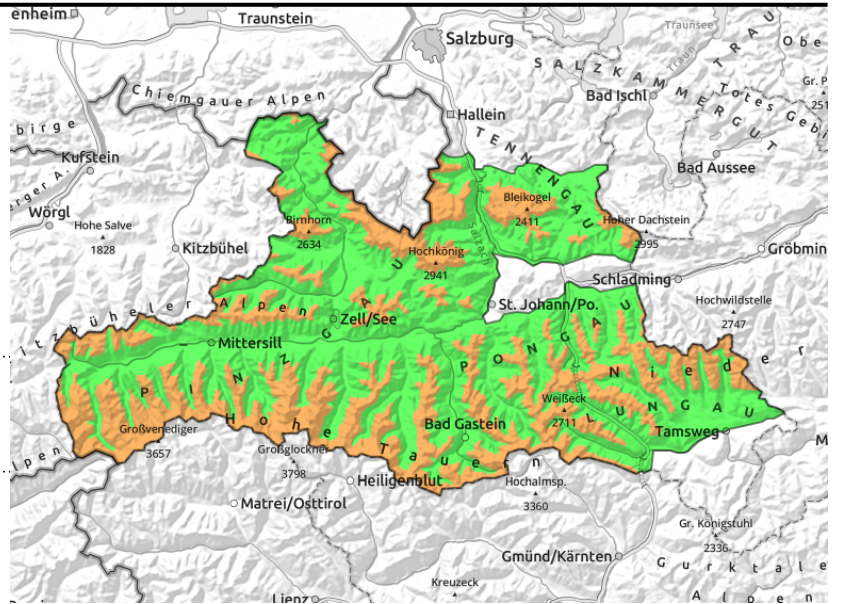


Expositions



22.02.2022

Tennengebirge, Gosaukamm, Steinernes Meer, Hochkönig, Hagengebirge, Göllstock, Chiemgauer Alpen, Heutal, Reiteralpe, Kitzbüheler Alpen, Glemmtal, Oberpinzgauer Grasberge, Großvenedigergruppe Alpenhauptkamm, Glocknergruppe Nord, Großvenedigergruppe Nord, Glocknergruppe Alpenhauptkamm, Dientner Grasberge, Niedere Tauern Nord, Niedere Tauern Alpenhauptkamm, Ankogelgruppe, Muhr, Goldberggruppe Nord, Goldberggruppe Alpenhauptkamm, Niedere Tauern Süd, Loferer und Leoganger Steinberge



Caution: avalanche danger has increased measurably

Avalanche danger above the treeline is CONSIDERABLE (3), below that altitude danger is LOW. Fresh snowdrift accumulations can be triggered by the impulse of one sole skier. Potential avalanches can be medium to large sized. Most danger zones occur in N/E/S aspects, and here, mostly in steep terrain distant from ridges down to steep forest lanes.

Snowpack structure

The old snowpack has settled well, is usually topped by a melt-freeze crust. Exposed terrain is utterly windblown, hardened or icy. On top of that the cold fresh snow is deposited amid lots of wind. Fresh snowdrifts are triggered with relative ease. Inside the snowpack are soft layers of faceted crystals, usually beneath hard layers of melt-freeze crusts. These weak layer are currently not relevant to triggering.

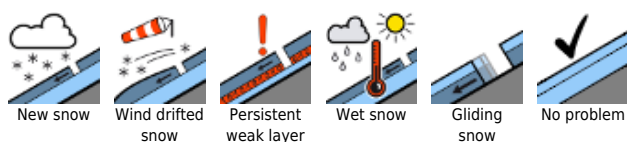
Weather

On Tuesday, poor visibility, ongoing snowfall in the morning. In the afternoon the snowfall will pause, visibility improve. Stormy NW winds at 60-80 km/hr will be blowing. Fresh snow between Monday evening and Tuesday evening: 15 to 20 cm. At 2000 m: -8 degrees, at 3000 m: -16 degrees. On Wednesday morning poor visibility again, with snow showers. Fresh snow: another 10-15 cm. As of midday, visibility will noticeably improve, and some sunshine can be expected. Stormy NW winds, slackening off in late afternoon. At 2000 m: -6 degrees, at 3000 m: -12 degrees.

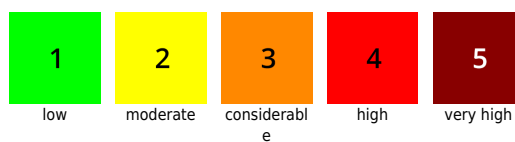
Outlook

Considerable snowdrift problem above the timberline.

Avalanche problems



Danger ratings



Expositions

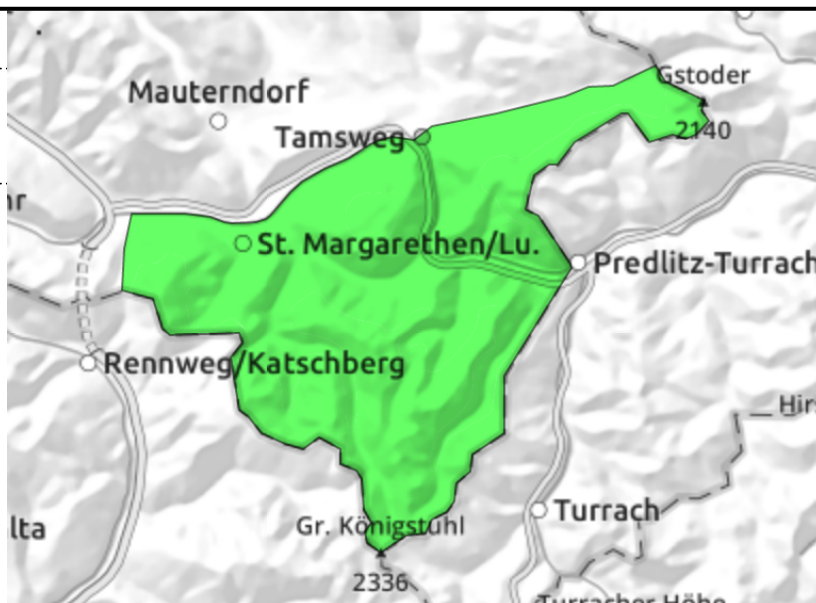


22.02.2022

Nockberge



very few danger points in backcountry terrain; persistent weak layer



Hardly any avalanche prone locations

Avalanche danger is LOW, there are hardly any danger zones. Weak layers inside the old snowpack can be triggered only in isolated cases by large additional loading, most likely in extended northern aspects.

Snowpack structure

The snowpack has settled well, showing signs of stormy wintery conditions. The surfaces are melt-freeze encrusted. Above the treeline the terrain is utterly windblown. Snow lies in the bowls. In the old snow are weak, soft layers of faceted crystals. These weak layer are currently not relevant to triggering.

Weather

On Tuesday, poor visibility, ongoing snowfall in the morning. In the afternoon the snowfall will pause, visibility improve. Stormy NW winds at 60-90 km/hr will be blowing. At 2000 m: -8 degrees. On Wednesday morning poor visibility again, with snow showers. As of midday, visibility will noticeably improve, and some sunshine can be expected. Stormy NW winds, slackening off in late afternoon. At 2000 m: -6 degrees.

Outlook

Little change. No fresh snow. But northerly winds.

Translated by Jeffrey McCabe, www.creativtrans.com

Avalanche problems



Danger ratings



Expositions

