

Storm winds, some fresh snow generating new snowdrifts

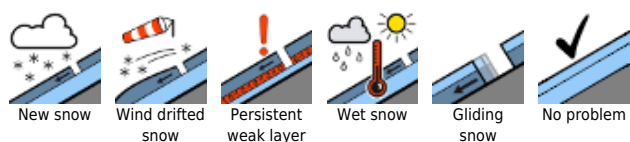


forestline

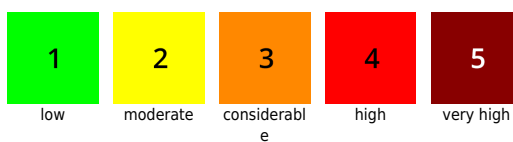
Osterhorngruppe, Gamsfeldgruppe, Untersbergstock, Chiemgauer Alpen, Heutal, Reiteralpe, Loferer und Leoganger Steinberge, Steinernes Meer, Hochkönig, Hagengebirge, Göllstock, Tennengebirge, Gosaukamm, Pongauer Grasberge, Niedere Tauern Nord, Dientner Grasberge, Kitzbüheler Alpen, Glemmtal, Oberpinzgauer Grasberge, Großvenedigergruppe Nord, Großvenedigergruppe Alpenhauptkamm, Glocknergruppe Nord, Glocknergruppe Alpenhauptkamm, Goldberggruppe Nord, Goldberggruppe Alpenhauptkamm, Niedere Tauern Alpenhauptkamm, Niedere Tauern Süd, Ankogelgruppe, Muhr, Nockberge



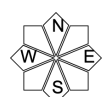
Avalanche problems



Danger ratings

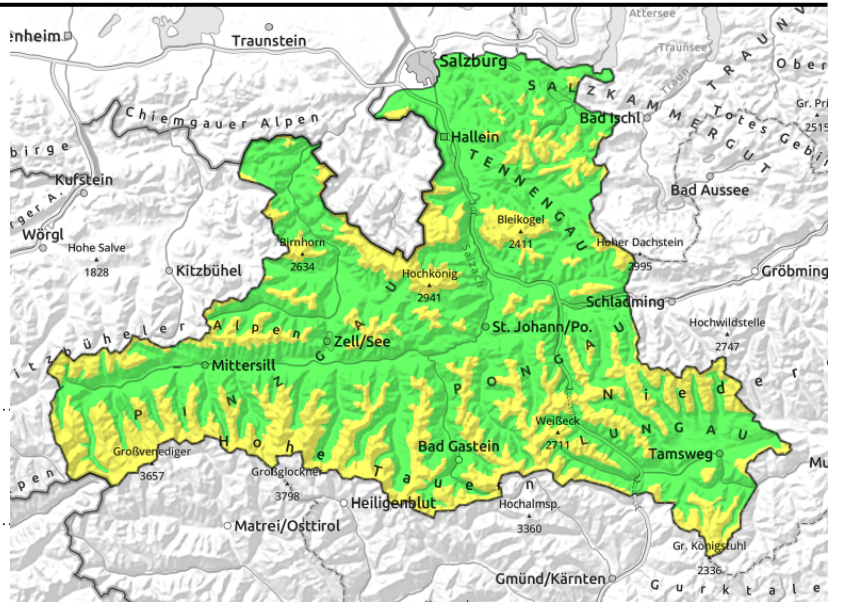


Expositions



21.02.2022

Osterhorngruppe, Gamsfeldgruppe, Untersbergstock, Chiemgauer Alpen, Heutal, Reiteralpe, Loferer und Leoganger Steinberge, Steinernes Meer, Hochkönig, Hagengebirge, Göllstock, Tennengebirge, Gosaukamm, Pongauer Grasberge, Niedere Tauern Nord, Dientner Grasberge, Kitzbüheler Alpen, Glemmtal, Oberpinzgauer Grasberge, Großvenedigergruppe Nord, Großvenedigergruppe Alpenhauptkamm, Glocknergruppe Nord, Glocknergruppe Alpenhauptkamm, Goldberggruppe Nord, Goldberggruppe Alpenhauptkamm, Niedere Tauern Alpenhauptkamm, Niedere Tauern Süd, Ankogelgruppe, Muhr, Nockberge



forestline



thin, small snowdrift masses, exposed terrain is windblown



seldom, in extremely steep terrain

Small-area snowdrift accumulations

Avalanche danger above the treeline is MODERATE, below that altitude danger is LOW. Fresh, thin snowdrifts can be triggered in places by the weight of one sole skier. Avalanches are generally small-sized. Dangers of falling in steep terrain outweigh those of being buried in snow. Most danger zones are distant from ridges on east-facing slopes. Isolated, mostly small glide-snow avalanches are possible in extremely steep terrain. Also superficial loose-snow avalanches.

Snowpack structure

The snowpack has settled well, is mostly blanketed by a melt-freeze crust. Exposed terrain is utterly windblown, hardened or icy. As a result of the cold front on Monday morning, the few centimetres of fresh snow will be transported by stormy winds. Inside the snowpack beneath hardened crusts are soft layers of faceted crystals, but this weak layer is currently not relevant to triggering.

Weather

On Monday morning a cold front will bring snow showers (fresh snow: 1-10 cm). The W/NW winds will be stormy. Temperatures will drop. In the afternoon, sunshine will be frequent. At 2000 m: -6 degrees; at 3000 m: -14 degrees.

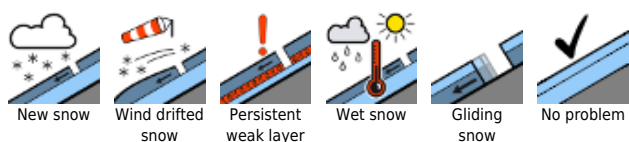
On Tuesday, visibility will be reduced by clouds, fog and snowfall. In the morning, snowfall will be persistent. In the afternoon the snowfall will take a break, visibility will improve. Amount of fresh snow from Monday evening until Tuesday evening: 15 to 40 cm. The NW winds will be strong to stormy. At 2000 m: -8 degrees; at 3000 m: -16 degrees.

Outlook

As a result of fresh snow and strong winds, avalanche danger levels will increase on Tuesday.

Translated by Jeffrey McCabe, www.creativtrans.com

Avalanche problems



Danger ratings



Expositions

