

In some places: snowdrift problem + persistent weak layer

	Osterhorngruppe, Gamsfeldgruppe, Untersbergstock, Chiemgauer Alpen, Heutal, Reiteralpe, Pongauer Grasberge, Dientner Grasberge, Niedere Tauern Nord		
	Nockberge		
	2000 m Loferer und Leoganger Steinberge, Steinernes Meer, Hochkönig, Hagengebirge, Göllstock, Tennengebirge, Gosaukamm, Oberpinzgauer Grasberge, Kitzbüheler Alpen, Glemmtal		
	2200 m Großvenedigergruppe Nord, Großvenedigergruppe Alpenhauptkamm, Glocknergruppe Nord, Glocknergruppe Alpenhauptkamm, Goldberggruppe Alpenhauptkamm, Niedere Tauern Alpenhauptkamm, Niedere Tauern Süd, Ankogelgruppe, Muhr, Goldberggruppe Nord		

Avalanche problems



Danger ratings



Expositions

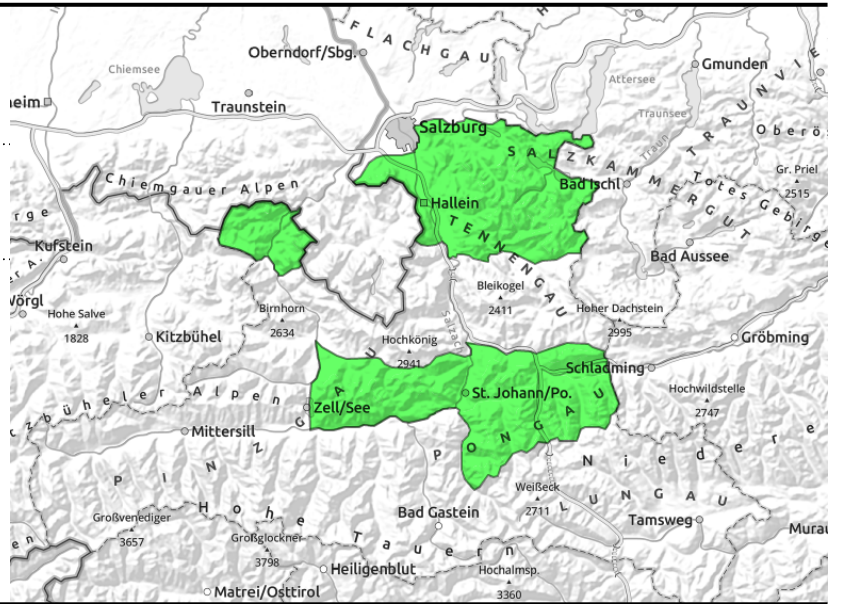


20.02.2022

Osterhorngruppe, Gamsfeldgruppe, Untersbergstock, Chiemgauer Alpen, Heutal, Reiteralpe, Pongauer Grasberge, Dientner Grasberge, Niedere Tauern Nord



very few avalanche prone locations in open terrain



Hardly any danger zones

Avalanche danger is LOW. Hardly any avalanche prone locations. Isolated glide-snow avalanches are possible in extremely steep grass-covered terrain, but will remain small. Superficial wet-snow avalanches cannot be ruled out.

Snowpack structure

The snowpack has settled well, is superficially melt-freeze encrusted.

Weather

On Sunday, visibility will be adequate, summits might be veiled in fog. Winds from the west will be brisk. At 2000 m: -3 degrees.

On Monday, a cold front will pass through, bringing stormy winds and showers. At 2000 m: -6 degrees. In the afternoon visibility will improve somewhat.

Outlook

On Monday: fresh snow and storm winds, rising avalanche danger.

Avalanche problems



New snow



Wind drifted snow



Persistent weak layer



Wet snow



Gliding snow



No problem

Danger ratings



1

low



2

moderate



3

considerable



4

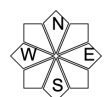
high



5

very high

Expositions

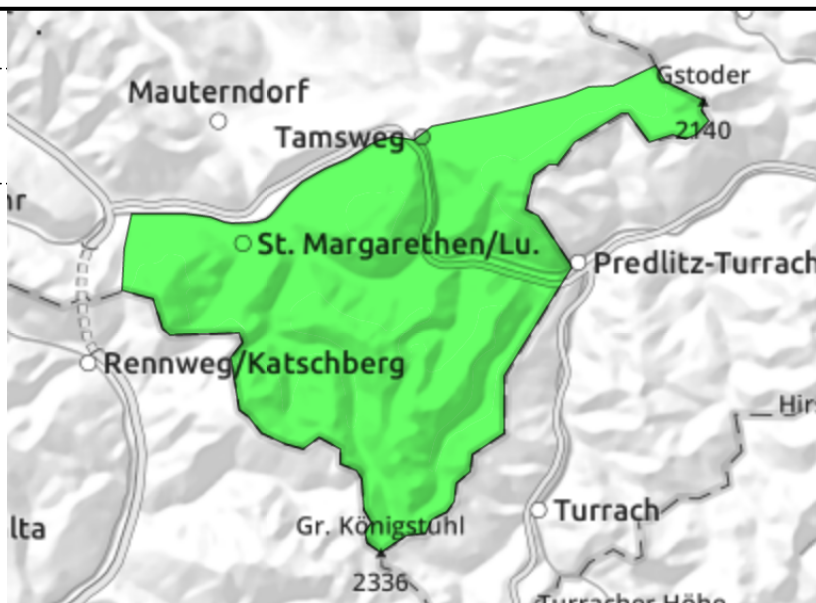


20.02.2022

Nockberge



very few avalanche prone locations in open terrain



Hardly any danger zones

Avalanche danger is LOW. Hardly any avalanche prone locations. Isolated glide-snow avalanches are possible in extremely steep grass-covered terrain, but will remain small. Weak layers inside the old snowpack can be triggered by large additional loading.

Snowpack structure

The snowpack has settled well, is superficially melt-freeze encrusted. Weak faceted layers in the old snowpack, but they are hardly triggerable.

Weather

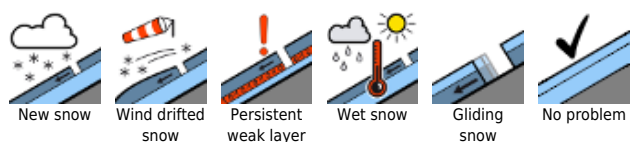
On Sunday, visibility will be adequate, summits might be veiled in fog. Winds from the west will be brisk. At 2000 m: -3 degrees.

On Monday, a cold front will pass through, bringing stormy winds and showers. At 2000 m: -6 degrees. In the afternoon visibility will improve somewhat.

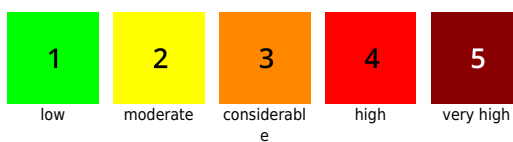
Outlook

On Monday: fresh snow and storm winds, rising avalanche danger.

Avalanche problems



Danger ratings

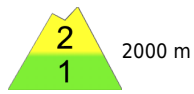



Expositions



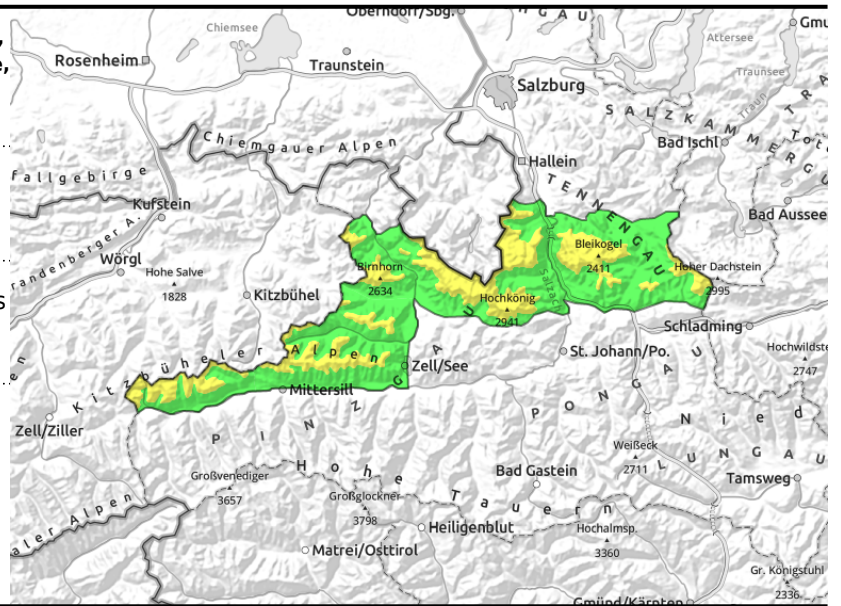
20.02.2022

Loferer und Leoganger Steinberge, Steinernes Meer, Hochkönig, Hagengebirge, Göllstock, Tennengebirge, Gosaukamm, Oberpinzgauer Grasberge, Kitzbüheler Alpen, Glemmtal



 thin ridgeline snowdrift patches

 in shady terrain



Small snowdrift problem, persistent weak layer

Avalanche danger above 2000m is MODERATE, below that altitude danger is LOW. Fresh snowdrift accumulations can be triggered near ridgelines, often by minimum additional loading, but the risks of falling outweigh those of being buried in snow. Older snowdrifts can be triggered in steep gullies in transitions from shallow to deeper snow particularly by large additional loading. In least favourable circumstances the snowpack could fracture down to deeper layers and the avalanche grow to large size. Most critical: shady N/E facing slopes.

In extremely steep grassy terrain, isolated mostly small glide-snow avalanches are possible.

Snowpack structure

The snowpack has settled well, is superficially melt-freeze encrusted. Weak faceted layers in the old snowpack, , the surface melt-freeze encrusted with a few cm of fresh snow/drifts on top.

Weather

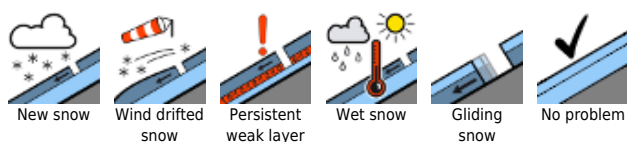
On Sunday, visibility will be adequate, summits might be veiled in fog. Winds from the west will be brisk. At 2000 m: -3 degrees.

On Monday, a cold front will pass through, bringing stormy winds and showers. At 2000 m: -6 degrees. In the afternoon visibility will improve somewhat.

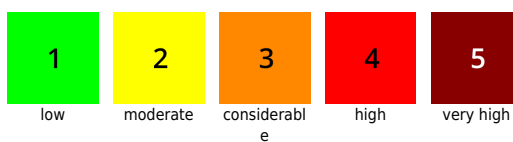
Outlook

On Monday: fresh snow and storm winds, rising avalanche danger.

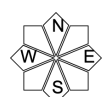
Avalanche problems



Danger ratings

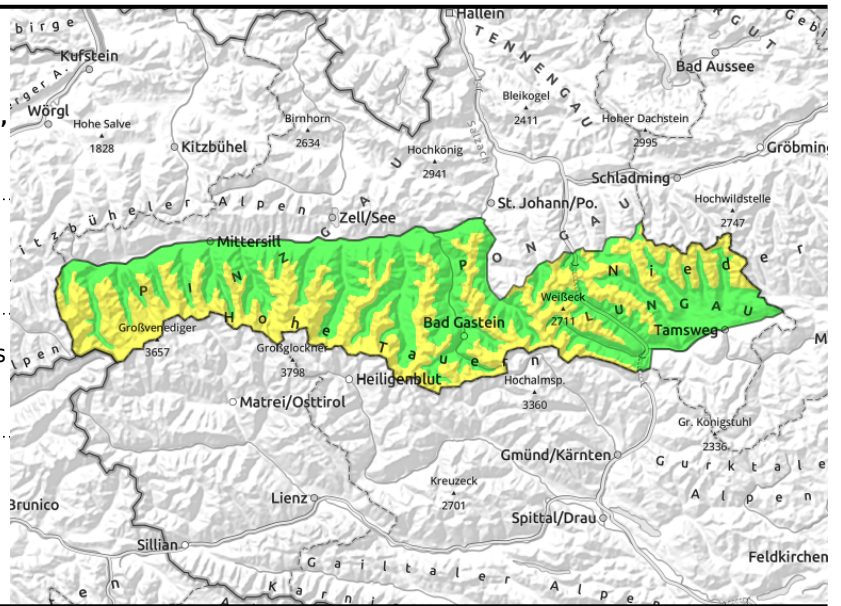




Expositions

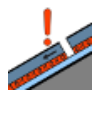



20.02.2022

Großvenedigergruppe Nord, Großvenedigergruppe Alpenhauptkamm, Glocknergruppe Nord, Glocknergruppe Alpenhauptkamm, Goldberggruppe Alpenhauptkamm, Niedere Tauern Alpenhauptkamm, Niedere Tauern Süd, Ankogelgruppe, Muhr, Goldberggruppe Nord



  thin ridgeline snowdrift patches

  in shady terrain, high alpine regions, triggerable in transitions from shallow to deep snow

Moderate snowdrift problem, persistent weak layer

Avalanche danger above 1900m is MODERATE, below that altitude danger is LOW. Fresh snowdrift accumulations can be triggered near ridgelines, often by minimum additional loading, but the risks of falling outweigh those of being buried in snow. Older snowdrifts can be triggered in steep gullies in transitions from shallow to deeper snow particularly by large additional loading. In least favourable circumstances the snowpack could fracture down to deeper layers and the avalanche grow to large size. Most critical: shady N/E facing slopes.

In extremely steep grassy terrain, isolated mostly small glide-snow avalanches are possible.

Snowpack structure

The snowpack has settled well, is superficially melt-freeze encrusted. Weak faceted layers in the old snowpack, the surface melt-freeze encrusted with a few cm of fresh snow/drifts on top.

Weather

On Sunday, visibility will be adequate, summits might be veiled in fog. Winds from the west will be brisk. At 2000 m: -3 degrees, at 3000 m: -10 degrees.

On Monday, a cold front will pass through, bringing stormy winds and showers. At 2000 m: -6 degrees, at 3000 m: -14 degrees. In the afternoon visibility will improve somewhat.

Outlook

On Monday: fresh snow and storm winds, rising avalanche danger.

Translated by Jeffrey McCabe, www.creativtrans.com

Avalanche problems



Danger ratings



Expositions

