

Moderate snowdrift problem + persistent weak layer

	Osterhorngruppe, Gamsfeldgruppe, Untersbergstock, Chiemgauer Alpen, Heutal, Reiteralpe, Pongauer Grasberge, Dientner Grasberge		
	Nockberge		
	2000 m Loferer und Leoganger Steinberge, Steinernes Meer, Hochkönig, Hagengebirge, Göllstock, Tennengebirge, Gosaukamm, Oberpinzgauer Grasberge, Kitzbüheler Alpen, Glemmtal		
	1900 m Großvenedigergruppe Nord, Großvenedigergruppe Alpenhauptkamm, Goldberggruppe Nord, Glocknergruppe Nord, Glocknergruppe Alpenhauptkamm, Goldberggruppe Alpenhauptkamm, Niedere Tauern Nord, Niedere Tauern Alpenhauptkamm, Niedere Tauern Süd, Ankogelgruppe, Muhr		

Avalanche problems



Danger ratings



Expositions

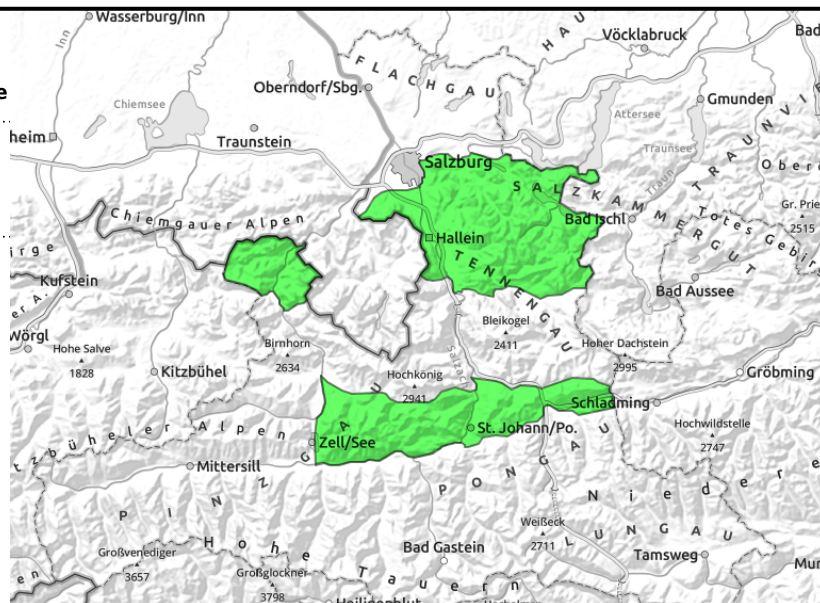


19.02.2022

**Osterhorngruppe, Gamsfeldgruppe,
Untersbergstock, Chiemgauer Alpen, Heutal,
Reiteralpe, Pongauer Grasberge, Dientner Grasberge**



very few avalanche prone locations in open terrain



Hardly any danger zones

Avalanche danger is LOW. Hardly any avalanche prone locations. Isolated glide-snow avalanches are possible in extremely steep grass-covered terrain, but will remain small. Near ridges above the treeline, small snowdrift accumulations can break away, but the risks of taking a fall outweigh those of being buried in snow.

Snowpack structure

The snowpack has settled well, is superficially melt-freeze encrusted, with a few cm of fresh snow/drifts on top.

Weather

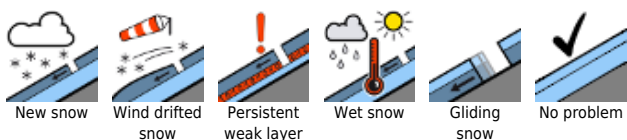
On Saturday, visibility reduced due to clouds, fog and light snowfall. During the day visibility will improve noticeably, as of midday sunshine will be present. Winds from west to northwest will be brisk to strong. At 2000 m: -6 degrees.

On Sunday, adequate visibility, some peaks stuck in fog. Minor snowfall is possible. Winds will be light. At 2000 m: -3 degrees.

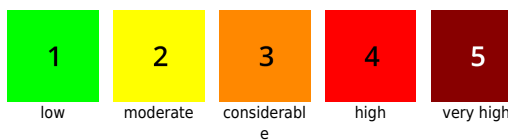
Outlook

Little change on Sunday.

Avalanche problems



Danger ratings



Expositions

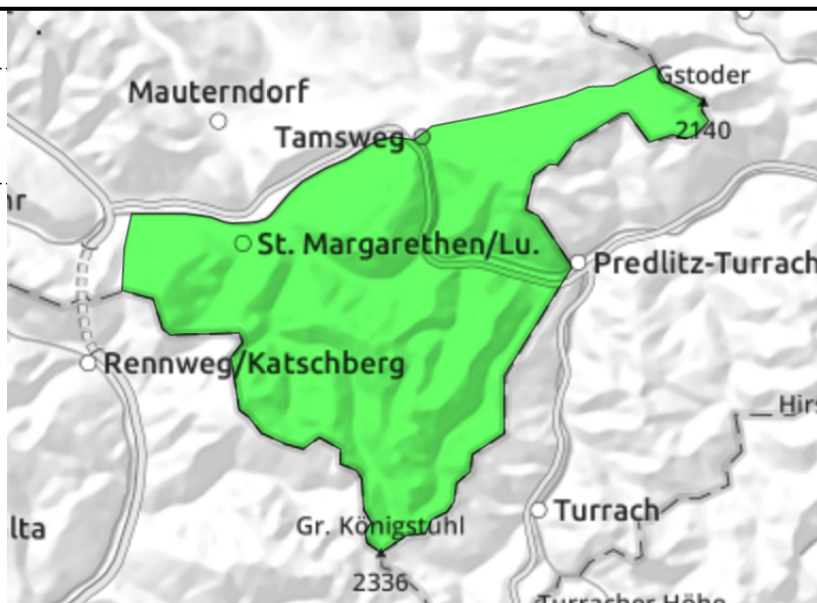


19.02.2022

Nockberge



very few avalanche prone locations in open terrain



Hardly any danger zones

Avalanche danger is LOW. Hardly any avalanche prone locations. Isolated glide-snow avalanches are possible in extremely steep grass-covered terrain, but will remain small. Weak layers inside the old snowpack can be triggered by large additional loading.

Snowpack structure

The snowpack has settled well, is superficially melt-freeze encrusted, with a few cm of fresh snow/drifts on top.

Weather

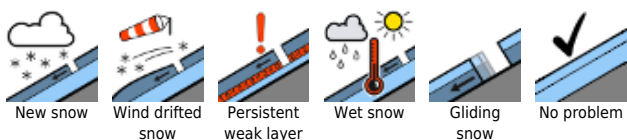
On Saturday, visibility reduced due to clouds, fog and light snowfall. During the day visibility will improve noticeably, as of midday sunshine will be present. Winds from west to northwest will be brisk to strong. At 2000 m: -6 degrees.

On Sunday, adequate visibility, some peaks stuck in fog. Minor snowfall is possible. Winds will be light. At 2000 m: -3 degrees.

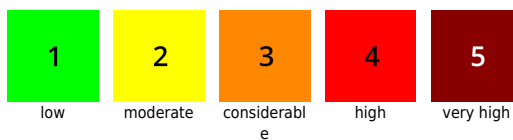
Outlook

Little change on Sunday.

Avalanche problems



Danger ratings

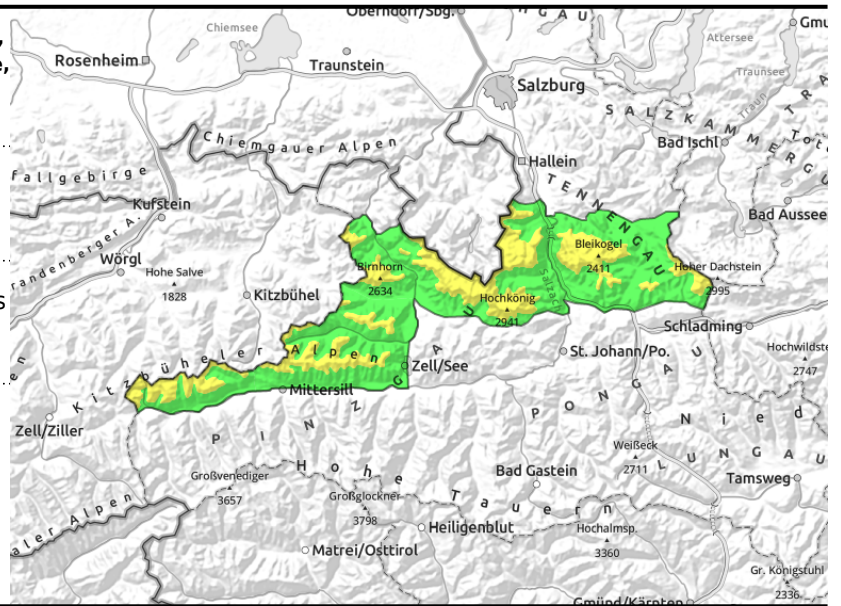
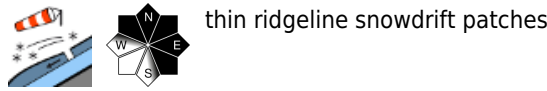
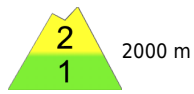


Expositions



19.02.2022

Loferer und Leoganger Steinberge, Steinernes Meer, Hochkönig, Hagengebirge, Göllstock, Tennengebirge, Gosaukamm, Oberpinzgauer Grasberge, Kitzbüheler Alpen, Glemmtal



Small snowdrift problem, persistent weak layer

Avalanche danger above 2000m is MODERATE, below that altitude danger is LOW. Fresh snowdrift accumulations can be triggered near ridgelines, often by minimum additional loading, but the risks of falling outweigh those of being buried in snow. Older snowdrifts can be triggered in steep gullies in transitions from shallow to deeper snow particularly by large additional loading. In least favourable circumstances the snowpack could fracture down to deeper layers and the avalanche grow to large size. Most critical: shady N/E facing slopes.

In extremely steep grassy terrain, isolated mostly small glide-snow avalanches are possible.

Snowpack structure

The snowpack has settled well, is superficially melt-freeze encrusted, with a few cm of fresh snow/drifts on top.

Weather

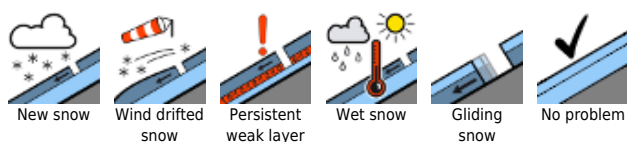
On Saturday, visibility reduced due to clouds, fog and light snowfall. During the day visibility will improve noticeably, as of midday sunshine will be present. Winds from west to northwest will be brisk to strong. At 2000 m: -6 degrees.

On Sunday, adequate visibility, some peaks stuck in fog. Minor snowfall is possible. Winds will be light. At 2000 m: -3 degrees.

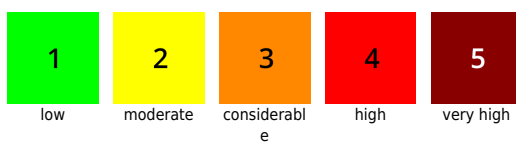
Outlook

Little change on Sunday.

Avalanche problems



Danger ratings

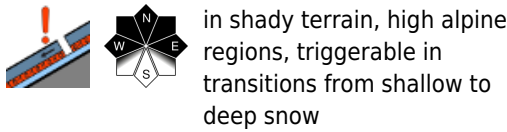
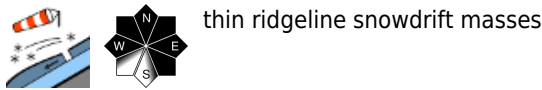
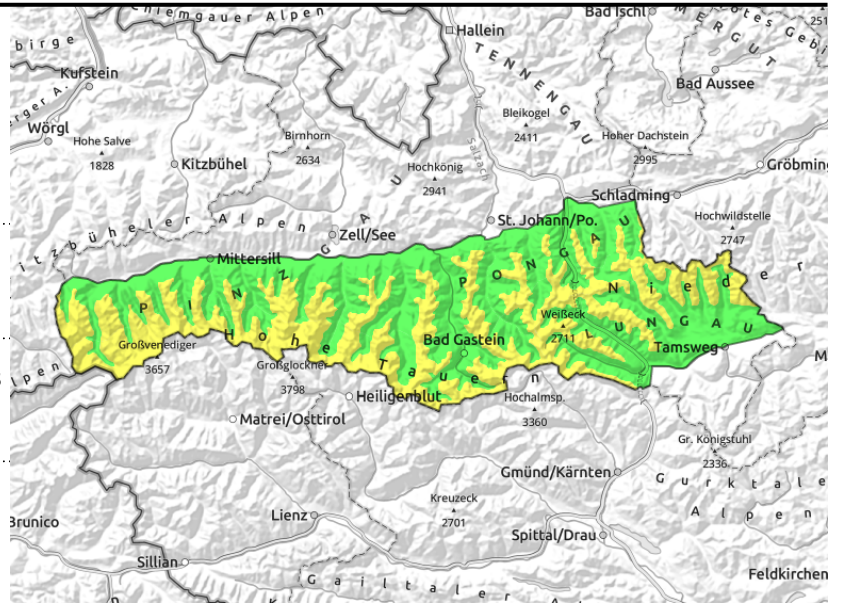


Expositions



19.02.2022

Großvenedigergruppe Nord, Großvenedigergruppe Alpenhauptkamm, Goldberggruppe Nord, Glocknergruppe Nord, Glocknergruppe Alpenhauptkamm, Goldberggruppe Alpenhauptkamm, Niedere Tauern Nord, Niedere Tauern Alpenhauptkamm, Niedere Tauern Süd, Ankogelgruppe, Muhr



Moderate snowdrift problem, persistent weak layer

Avalanche danger above 1900m is MODERATE, below that altitude danger is LOW. Fresh snowdrift accumulations can be triggered near ridgelines, often by minimum additional loading, but the risks of falling outweigh those of being buried in snow. Older snowdrifts can be triggered in steep gullies in transitions from shallow to deeper snow particularly by large additional loading. In least favourable circumstances the snowpack could fracture down to deeper layers and the avalanche grow to large size. Most critical: shady N/E facing slopes.

In extremely steep grassy terrain, isolated mostly small glide-snow avalanches are possible.

Snowpack structure

The snowpack has settled well, is superficially melt-freeze encrusted, with a few cm of fresh snow/drifts on top.

Weather

On Saturday, visibility reduced due to clouds, fog and light snowfall. During the day visibility will improve noticeably, as of midday sunshine will be present. Winds from west to northwest will be brisk to strong. At 2000 m: -6 degrees, at 3000 m -12 degrees.

On Sunday, adequate visibility, some peaks stuck in fog. Minor snowfall is possible. Winds will be light. At 2000 m: -3 degrees, at 3000 m -10 degrees.

Outlook

Little change on Sunday.

Translated by Jeffrey McCabe, www.creativtrans.com

Avalanche problems



Danger ratings



Expositions

