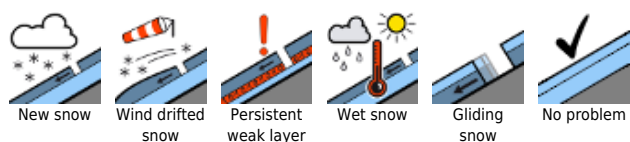


Wet snow problem down below, snowdrift problem up above

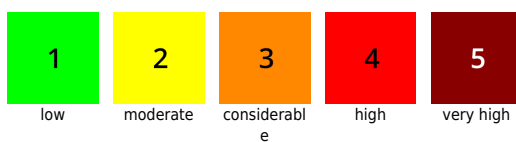
2 Osterhorngruppe, Gamsfeldgruppe, Untersbergstock, Chiemgauer Alpen, Heutal, Reiteralpe, Tennengebirge, Gosaukamm, Pongauer Grasberge, Niedere Tauern Nord, Niedere Tauern Alpenhauptkamm, Niedere Tauern Süd, Nockberge, Goldberggruppe Nord, Dientner Grasberge, Kitzbüheler Alpen, Glemmtal, Oberpinzgauer Grasberge

3
2 2300 m Steinernes Meer, Hochkönig, Hagengebirge, Göllstock, Loferer und Leoganger Steinberge, Großvenedigergruppe Nord, Großvenedigergruppe Alpenhauptkamm, Glocknergruppe Nord, Glocknergruppe Alpenhauptkamm, Goldberggruppe Alpenhauptkamm, Ankogelgruppe, Muhr

Avalanche problems



Danger ratings

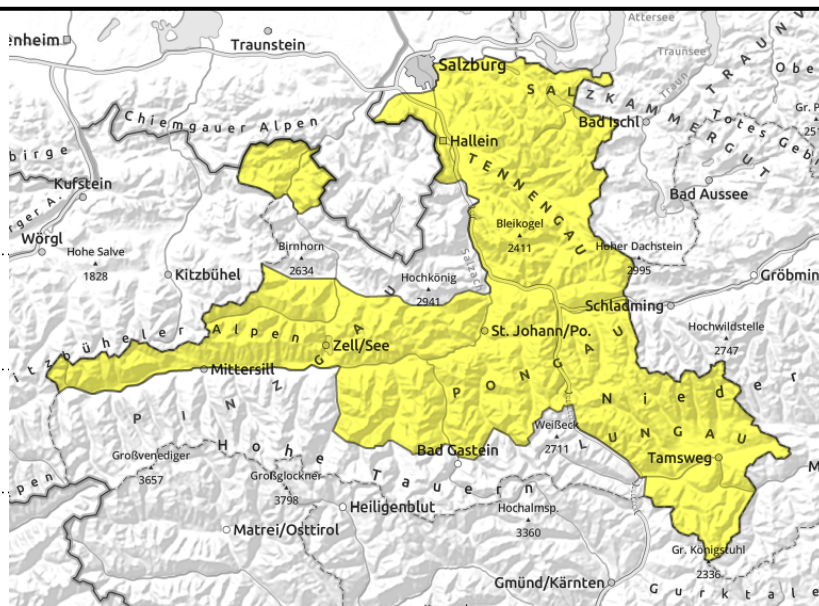


Expositions



18.02.2022

Osterhorngruppe, Gamsfeldgruppe, Untersbergstock, Chiemgauer Alpen, Heutal, Reiteralpe, Tennengebirge, Gosaukamm, Pongauer Grasberge, Niedere Tauern Nord, Niedere Tauern Alpenhauptkamm, Niedere Tauern Süd, Nockberge, Goldberggruppe Nord, Dientner Grasberge, Kitzbüheler Alpen, Glemmtal, Oberpinzgauer Grasberge



small-to-medium superficial wet-snow avalanches



in extremely steep grassy terrain

Moderate wet-snow problem

Avalanche danger is MODERATE. Superficial wet-snow avalanches, mostly small-to-medium, can trigger in extremely steep terrain naturally or be triggered by a winter sports enthusiast. In extremely steep grassy terrain, isolated glide-snow avalanches can release.

Snowpack structure

The snowpack has settled well, is sticky-to-encrusted on the surface.

Weather

On Friday, generally good visibility, though cloudbanks will pass through and create diffuse light conditions. Winds from the south will be light or moderate. Temperatures will rise during the day. At 2000 m: from -3 in early morning to +5 degrees in the evening.

Saturday will start with poor visibility and some snowfall (5 cm). In the afternoon, visibility will improve. At 2000 m: -7 degrees. Westerly winds will often be strong.

Outlook

On Saturday the wet-snow problem will be halted by lower temperatures. Avalanche danger will recede.

Avalanche problems



New snow



Wind drifted snow



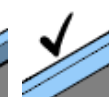
Persistent weak layer



Wet snow



Gliding snow



No problem

Danger ratings



1

low



2

moderate



3

considerable



4

high



5

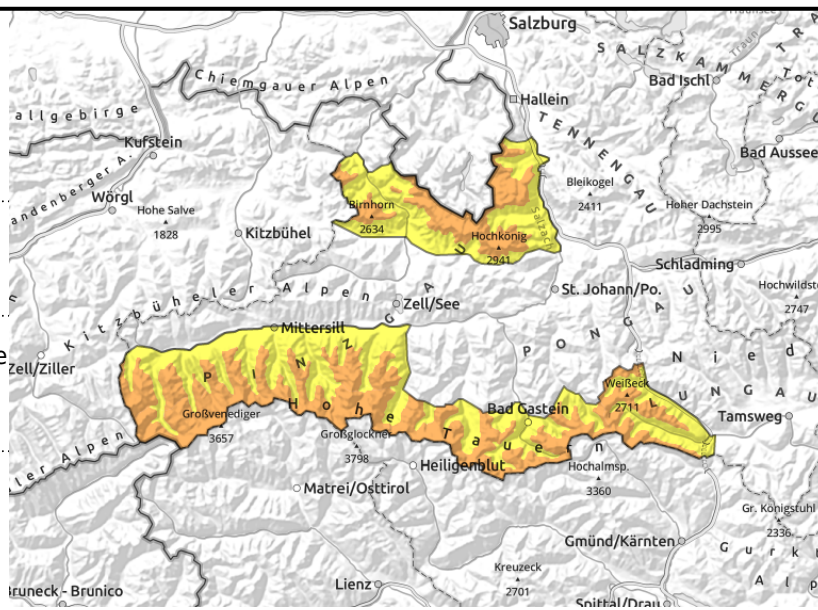
very high

Expositions



18.02.2022

Steinernes Meer, Hochkönig, Hagengebirge, Göllstock, Loferer und Leoganger Steinberge, Großvenedigergruppe Nord, Großvenedigergruppe Alpenhauptkamm, Glocknergruppe Nord, Glocknergruppe Alpenhauptkamm, Goldberggruppe Alpenhauptkamm, Ankogelgruppe, Muhr



gullies, steep bowls, triggerable in transitions from shallow to deep snow

superficial wet-snow avalanches, glide-snow avalanches, most small-to-medium

Above 2300 m: snowdrift problem

Avalanche danger above 2300 m is CONSIDERABLE, below that altitude danger is MODERATE. At high and high alpine altitudes the snowdrifts (mostly in gullies and bowls) can be triggered by minimum additional loading particularly in transitions from shallow to deep snow. At low and intermediate altitudes, superficial wet-snow avalanches, mostly small-to-medium can trigger naturally in very steep to extremely steep terrain, or be triggered by a skier. In extremely steep grassy terrain, isolated glide-snow avalanches can release.

Snowpack structure

The snowpack has settled well. Beneath the largely compact old snowpack are still faceted weak layers which could tend towards fracture propagation. On the surface, the snow on Thursday will be sticky up to 2300 m. The terrain above that is often utterly windblown or encrusted/hard. The snowdrifts are in gullies and bowls.

Weather

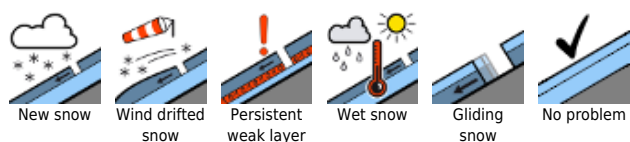
On Friday, generally good visibility, though cloudbanks will pass through and create diffuse light conditions. Winds from the south will be light or moderate. Temperatures will rise during the day. At 2000 m: from -3 in early morning to +5 degrees in the evening, at 3000 m from -7 to -2 degrees. Saturday will start with poor visibility and some snowfall (5 cm). In the afternoon, visibility will improve. At 2000 m: -7 degrees. Westerly winds will often be strong.

Outlook

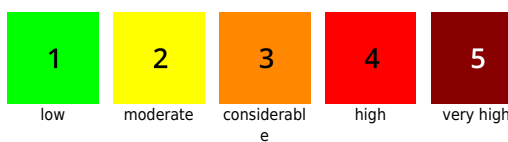
On Saturday the wet-snow problem will be halted by lower temperatures. At high altitudes the snowpack will settle further (too little fresh snow for relevant snowdrift accumulations).

Translated by Jeffrey McCabe, www.creativtrans.com

Avalanche problems



Danger ratings



Expositions

