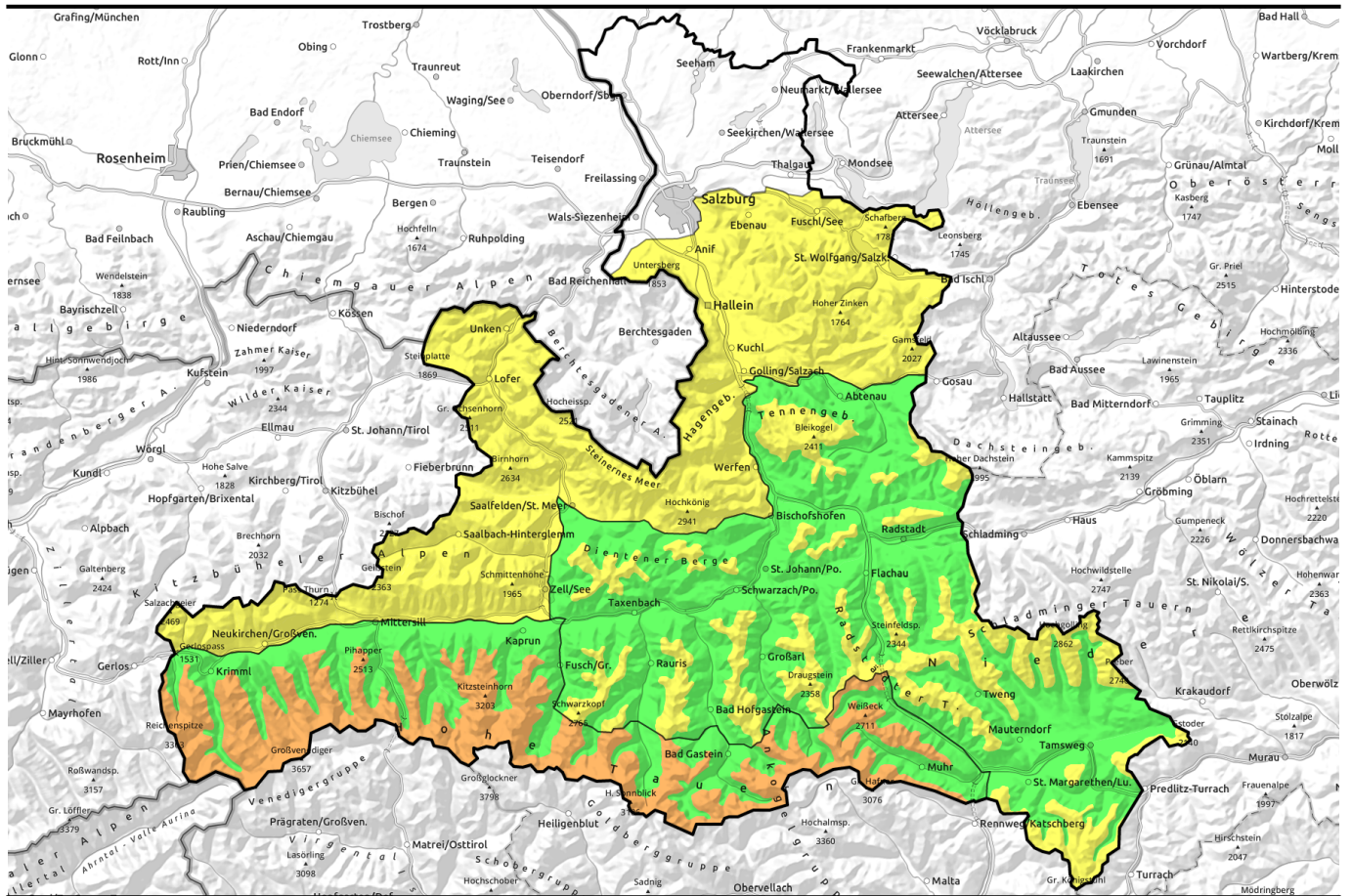


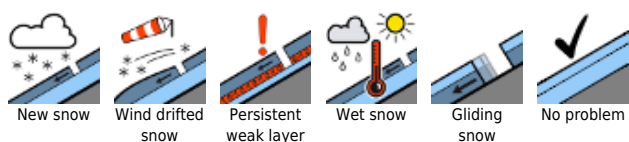
16.02.2022



Rising temperatures. Snowdrift problem on high, wet-snow problem down below.

	<p>Osterhorngruppe, Gamsfeldgruppe, Untersbergstock, Chiemgauer Alpen, Heutal, Reiteralpe, Loferer und Leoganger Steinberge, Kitzbüheler Alpen, Glemmtal, Oberpinzgauer Grasberge, Steinernes Meer, Hochkönig, Hagengebirge, Göllstock</p>	
	<p>1500 m Tennengebirge, Gosaukamm, Dientner Grasberge, Pongauer Grasberge, Niedere Tauern Nord, Niedere Tauern Alpenhauptkamm, Niedere Tauern Süd, Goldberggruppe Nord, Nockberge</p>	
	<p>1800 m Großvenedigergruppe Nord, Großvenedigergruppe Alpenhauptkamm, Glocknergruppe Nord, Glocknergruppe Alpenhauptkamm, Goldberggruppe Alpenhauptkamm, Ankogelgruppe, Muhr</p>	

Avalanche problems



Danger ratings

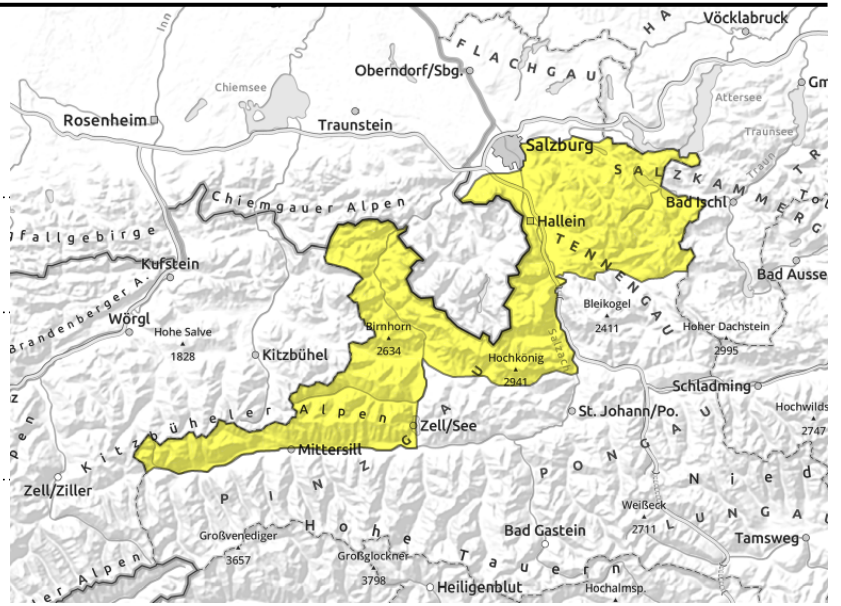


Expositions



16.02.2022

Osterhorngruppe, Gamsfeldgruppe, Untersbergstock, Chiemgauer Alpen, Heutal, Reiteralpe, Loferer und Leoganger Steinberge, Kitzbüheler Alpen, Glemmtal, Oberpinzgauer Grasberge, Steinernes Meer, Hochkönig, Hagengebirge, Göllstock



thin snowdrift patches, most near ridges, small-to-medium avalanches, risk of falls on extremely steep slopes+



small loose-snow avalanche on steep slopes due to warmth, isolated glide-snow avalanches

Moderate snowdrift problem, persistent weak layer, wet-snow problem

Avalanche danger is MODERATE.

Three moderate problems prevail: (1) **Snowdrift problem**, near ridges small and thin drifts, can trigger small-to-medium avalanches in steep terrain, triggerable also by a fall.

(2) **Persistent weak layer**: undetectable on the surface. Potential weak layers inside the snowpack can trigger most likely in transitions into wind-loaded zones (often where snow is shallow). All in all, only isolated spots where large additional loading, e.g. a fall, a group without distances, stomping, a small slab, can trigger a large slab.

(3) **Warmth problem**: (wet-snow problem), which will cause numerous small loose-snow avalanches to release from the thin layer of fresh snow on steep slopes.

Snowpack structure

On Tuesday there was 10-15 cm of fresh snow, amid some W/NW wind at high altitudes. Small drifts were generated, thin, not extensive.

Beneath the new snow are compact layers widespread which distribute their forces well. Inside the old snowpack, particularly on north-facing slopes are faceted weak layers which in places tend towards fracture propagation.

Weather

On **Wednesday** adequate visibility to start with, some pale sunshine, then cloud cover will move in, the peaks disappear in fog. Late afternoon the next round of precipitation will start, amid strong/stormy westerly winds. Snowfall level in the evening at 1500 m. Temperature at 2000 m: from -4 to 0 degrees.

Storm winds on Thursday! Particularly at high altitudes, windspeeds over 100 km/hr can be reached, accompanied by instable weather conditions and variable visibility, with repeated showers. Snowfall level will initially lie at over 2000 m, towards evening descend to below 1500m. Snow and rain will be minor. Temperature at 2000 m: 2 degrees at midday.

Outlook

On Wednesday night heavy storm winds and warm fresh snowfall or rain. Situation and conditions will

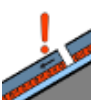
Avalanche problems



New snow



Wind drifted snow



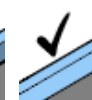
Persistent weak layer



Wet snow

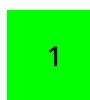


Gliding snow



No problem

Danger ratings



1

low



2

moderate



3

considerabl

e



4

high



5

very high

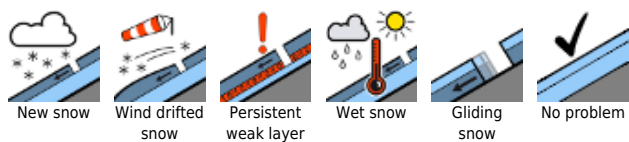
Expositions



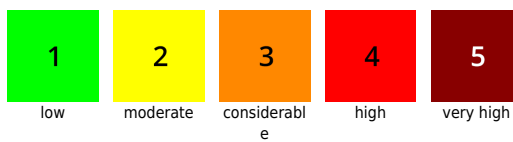
16.02.2022

change ongoingly. Danger level MODERATE (2) or CONSIDERABLE (3) (wet-snow and glide-snow problem at low altitudes, snowdrift problem higher up).

Avalanche problems



Danger ratings

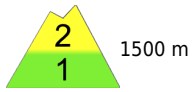


Expositions



16.02.2022

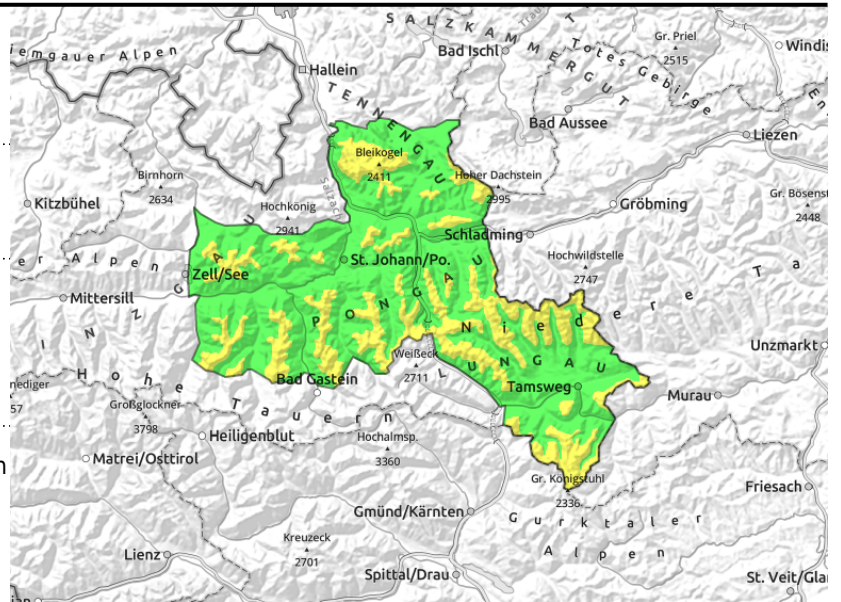
Tennengebirge, Gosaukamm, Dientner Grasberge, Pongauer Grasberge, Niedere Tauern Nord, Niedere Tauern Alpenhauptkamm, Niedere Tauern Süd, Goldberggruppe Nord, Nockberge



thin snowdrift patches, most near ridges, small-to-medium avalanches, risk of falling on steep slopes



>1600m, isolated triggerings in transitions from shallow to deep snow, large additional loading



Moderate snowdrift problem, persistent weak layer, wet-snow problem

Avalanche danger above 1500 m is MODERATE, below that altitude danger is LOW.

Three moderate problems prevail: (1) **Snowdrift problem**, near ridges small and thin drifts, can trigger small-to-medium avalanches in steep terrain, triggerable also by a fall.

(2) **Persistent weak layer**: undetectable on the surface. Potential weak layers inside the snowpack can trigger most likely in transitions into wind-loaded zones (often where snow is shallow). All in all, only isolated spots where large additional loading, e.g. a fall, a group without distances, stomping, a small slab, can trigger a large slab.

(3) **Warmth problem**: (wet-snow problem), which will cause numerous small loose-snow avalanches to release from the thin layer of fresh snow on steep slopes.

Snowpack structure

On Tuesday there was 10-15 cm of fresh snow, amid some W/NW wind at high altitudes. Small drifts were generated, thin, not extensive.

Beneath the new snow are compact layers widespread which distribute their forces well. Inside the old snowpack, particularly on north-facing slopes are faceted weak layers which in places tend towards fracture propagation.

Weather

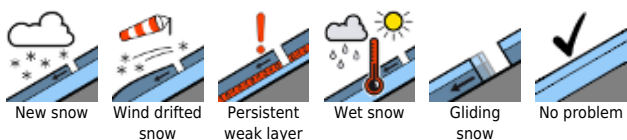
On **Wednesday** adequate visibility to start with, some pale sunshine, then cloud cover will move in, the peaks disappear in fog. Late afternoon the next round of precipitation will start, amid strong/stormy westerly winds. Snowfall level in the evening at 1500 m. Temperature at 2000 m: from -4 to 0 degrees.

Storm winds on Thursday! Particularly at high altitudes, windspeeds over 100 km/hr can be reached, accompanied by instable weather conditions and variable visibility, with repeated showers. Snowfall level will initially lie at over 2000 m, towards evening descend to below 1500m. Snow and rain will be minor. Temperature at 2000 m: 2 degrees at midday, at 3000 m: -5 degrees.

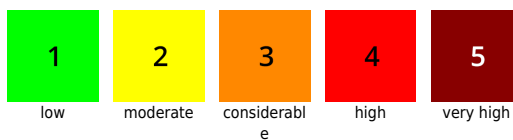
Outlook

On Wednesday night heavy storm winds and warm fresh snowfall or rain. Situation and conditions will

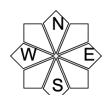
Avalanche problems



Danger ratings



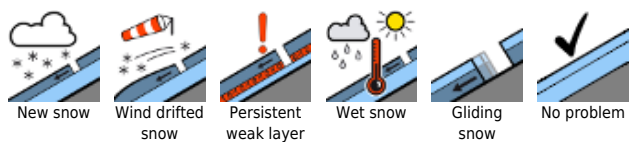
Expositions



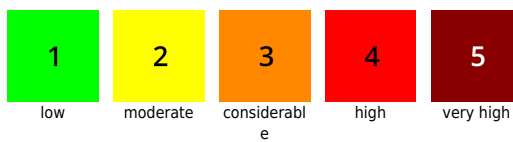
16.02.2022

change ongoingly. Danger level MODERATE (2) or CONSIDERABLE (3) (wet-snow and glide-snow problem at low altitudes, snowdrift problem higher up).

Avalanche problems



Danger ratings

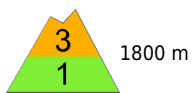


Expositions



16.02.2022

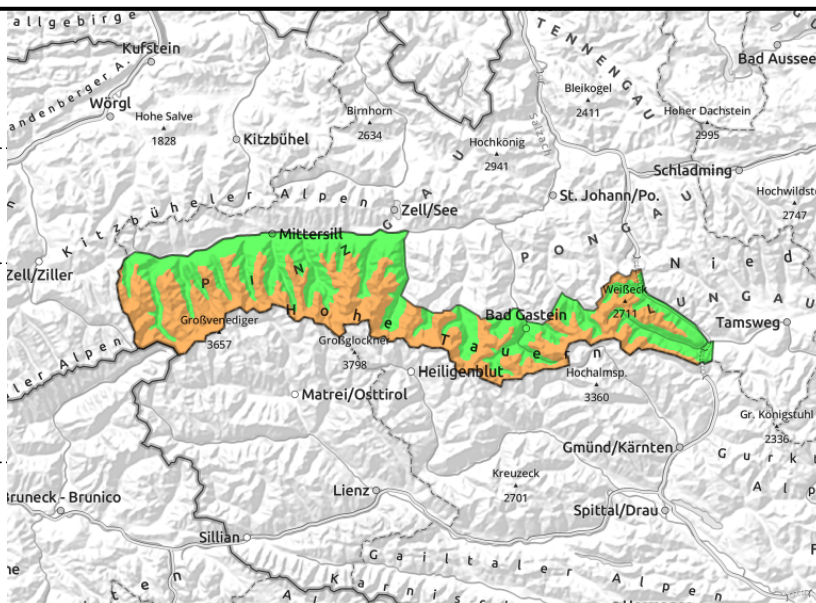
Großvenedigergruppe Nord, Großvenedigergruppe Alpenhauptkamm, Glocknergruppe Nord, Glocknergruppe Alpenhauptkamm, Goldberggruppe Alpenhauptkamm, Ankogelgruppe, Muhr



many aspects, mostly near ridges also distant from ridges on north-facing slopes, easily triggered (= level 3), can fracture to deeper layers



small/medium loose-snow avalanches due to warmth on steep slopes, isolated glide-snow avalanches



Considerable danger in places, small avalanches can fracture down to deeper layers

Avalanche danger above 1800m is CONSIDERABLE, below that altitude danger is mostly LOW. Restraint and experience are imperative.

Main problem: fresh and older snowdrifts. Avalanche prone locations are found in many aspects (W/N/E/S), mostly near ridges, also distant from ridges on north-facing slopes. Even the weight of one sole skier can trigger an avalanche, which can grow to large size if the slab fractures to deeper layers (hidden persistent weak layer in extended northern aspects above 1800 m).

Through higher temperatures, numerous small loose-snow avalanches will release in steem terrain, particularly in the afternoon.

Snowpack structure

On Tuesday there was 10-15 cm of fresh snow, amid some W/NW wind at high altitudes. Small drifts were generated, thin, not extensive.

Beneath the new snow are compact layers widesread which distribute their forces well. Inside the old snowpack, particularly on north-facing slopes are faceted weak layers which in places tend towards fracture propagation.

Weather

On Wednesday adequate visibility to start withm, some pale sunshine, then cloud cover will move inm, the peaks disappear in fog. Late afternoon the next round of precipitation will start, amid strong/stormy westerly winds. Snowfall level in the evening at 1500 m. Temperature at 2000 m: from -4 to 0 degrees.

Storm winds on Thursday! Particularly at high altitudes, windspeeds over 100 km/hr can be reached, accompanied by instable weather conditions and variable visibility, with repeated showers. Snowfall level will initially lie at over 2000 m, towards evening descend to below 1500m. Snow and rain will be minor. Wind temperature at 2000 m: 2 degrees at midday, at 3000 m: -5 degrees.

Avalanche problems



New snow



Wind drifted snow



Persistent weak layer



Wet snow



Gliding snow



No problem

Danger ratings



1

low



2

moderate



3

considerabl

e



4

high



5

very high

Expositions



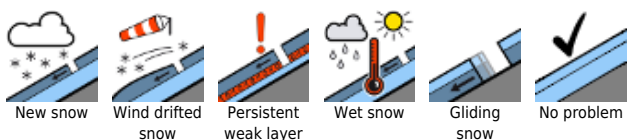
16.02.2022

Outlook

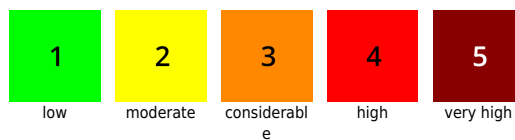
Snowdrift problem / Persistent weak layer / Wet-snow problem. Danger level at CONSIDERABLE (3).
Caution: the new loading and superficial avalanches could cause the snowpack to fracture to deeper layers and thereby grow to larger size.

Translated by Jeffrey McCabe, www.creativtrans.com

Avalanche problems



Danger ratings



Expositions

