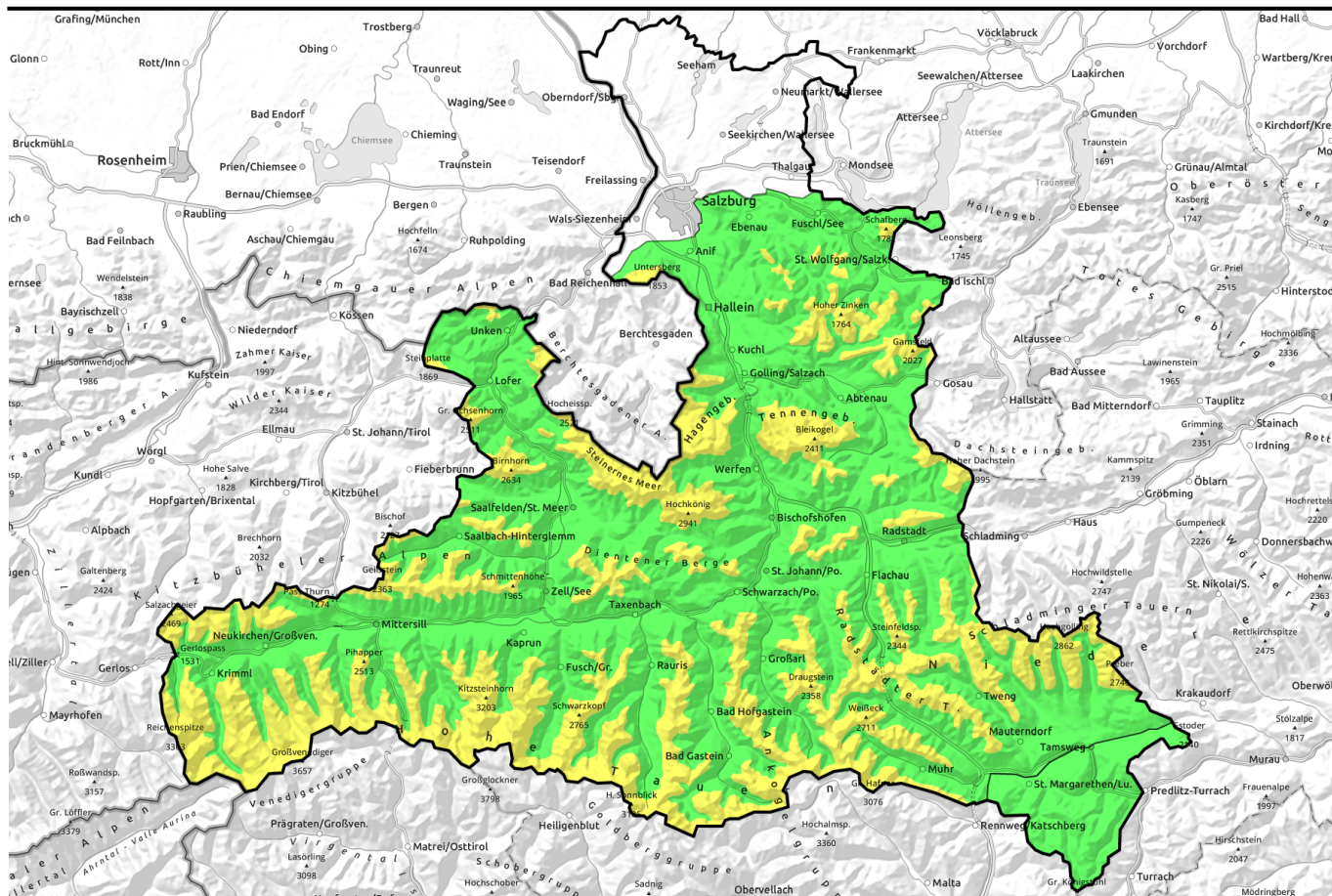


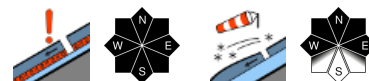
12.02.2022



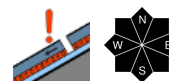
Some fresh snow, rising foehn wind



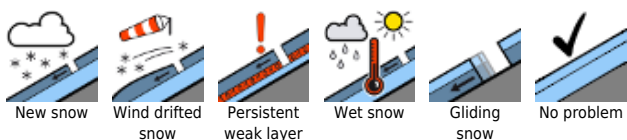
Osterhorngruppe, Gamsfeldgruppe, Untersbergstock, Chiemgauer Alpen, Heutal, Reiteralpe, Steinernes Meer, Hochkönig, Hagengebirge, Göllstock, Tennengebirge, Gosaukamm, Pongauer Grasberge, Niedere Tauern Nord, Dientner Grasberge, Niedere Tauern Süd, Loferer und Leoganger Steinberge, Kitzbüheler Alpen, Glemmtal, Oberpinzgauer Grasberge, Niedere Tauern Alpenhauptkamm, Goldberggruppe Nord, Ankogelgruppe, Muhr, Großvenedigergruppe Nord, Großvenedigergruppe Alpenhauptkamm, Glocknergruppe Nord, Glocknergruppe Alpenhauptkamm, Goldberggruppe Alpenhauptkamm



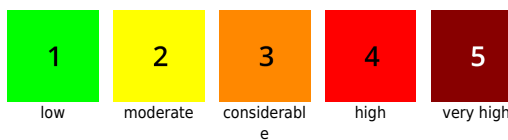
Nockberge



Avalanche problems



Danger ratings

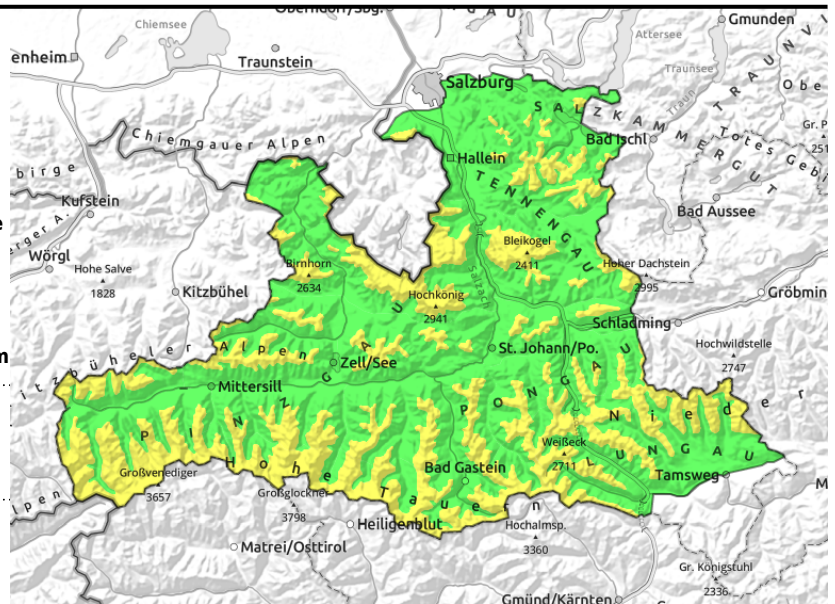


Expositions



12.02.2022

Osterhorngruppe, Gamsfeldgruppe, Untersbergstock, Chiemgauer Alpen, Heutal, Reiteralpe, Steinernes Meer, Hochkönig, Hagengebirge, Göllstock, Tennengebirge, Gosaukamm, Pongauer Grasberge, Niedere Tauern Nord, Dientner Grasberge, Niedere Tauern Süd, Loferer und Leoganger Steinberge, Kitzbüheler Alpen, Glemmtal, Oberpinzgauer Grasberge, Niedere Tauern Alpenhauptkamm, Goldberggruppe Nord, Ankogelgruppe, Muhr, Großvenedigergruppe Nord, Großvenedigergruppe Alpenhauptkamm, Glocknergruppe Nord, Glocknergruppe Alpenhauptkamm, Goldberggruppe Alpenhauptkamm



1500 m



triggerable in transitions from shallow to deep snow



thin, small snowdrift masses, easily triggered

Predominantly favorable, but caution urged in wind-loaded zones

Avalanche danger above 1500 m is MODERATE, below that altitude danger is LOW. Slabs can be triggered in some spots at high altitudes and grow to medium, in isolated cases to large size, mostly by large additional loading (taking a fall, a group without distances, stomping...). Danger zones occur especially near ridges, but also behind protruberances distant from ridges and in gullies. Particularly in transitions into wind-loaded zones, fracture points can be touched. In steep rocky terrain, mostly small, superficial loose-snow avalanches release due to daytime warming. Below about 2500 m, furthermore, on very steep grass-covered slopes, glide-snow avalanches (mostly small-to-medium) can trigger in isolated cases. Due to rising southerly foehn win, trigger-sensitive snowdrifts will accumulate in gullies and on north-facing slopes.

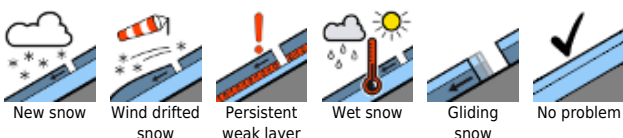
Snowpack structure

On Friday there was 5-10 cm of fresh snow registered, accompanied by brisk (occasionally stormy) W/N winds (at high alpine regions from the northeast). The new lies on sunny slopes atop a thin melt-freeze crust, on shady slopes atop settled powder, otherwise above the treeline atop wind-pressed old snow. On steep sunny slopes the fresh snow is already becoming moist. The old snowpack has settled well, but has weak layers. 1. Persistent weak layer above intermediate altitudes, faceted crystals at melt-freeze crusts, can be triggered in open terrain because its blanketing is so thin; 2. gliding snow on steep grassy slopes below 2500 m, where the snowpack glides in its entirety over the ground.

Weather

On Saturday, outstanding mountain weather, pure sunshine, excellent visibility. Winds will be light to moderate from east to south, in the afternoon in high alpine regions of the Tauern brisk southerly foehn wind will arise. At 2000 m: rising from -8 to -2 degrees; at 3000 m: from -11 to -7 degrees. On Sunday, again sunny weather, outstanding visibility, winds in the Tauern region will be brisk from the south, elsewhere light. At 2000 m: -3 to 0 degrees; at 3000 m: -6 degrees.

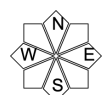
Avalanche problems



Danger ratings



Expositions

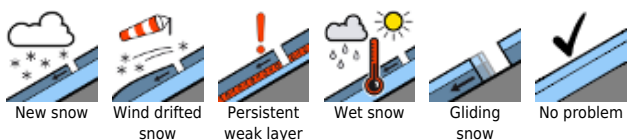


12.02.2022

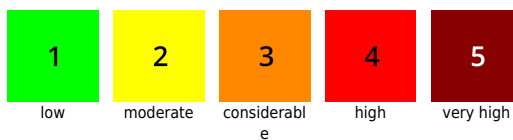
Outlook

In foehn-exposed regions of the Tauern, frequency and size of snowdrift accumulations will increase on Sunday.

Avalanche problems



Danger ratings



Expositions

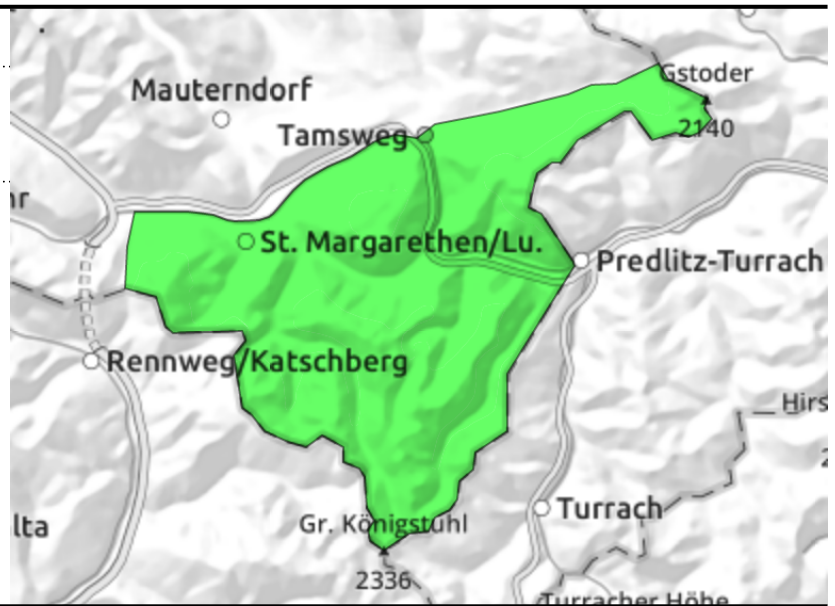


12.02.2022

Nockberge



triggerable at rims of gullies and bowls



Isolated danger zones, persistent weak layer

Avalanche danger is LOW. Isolated avalanche prone locations are found in gullies and increasing on NE/E/S/SW facing slopes. These are not deep but often prone to triggering and can, by large additional loading, trigger a medium-sized slab avalanche. Possible trigger points lie especially in transitions from shallow to deeper snow.

Snowpack structure

The fresh snow from the beginning of the week has settled and consolidated well in the very mild and windless weather. Exposed terrain is often utterly windblown, gullies and bowls are filled to the brim with drifts down to sparsely wooded zones. The weak point: persistent soft layers of faceted crystals in the old snow. On sunny slopes there is frequently a melt-freeze crust.

Weather

On Saturday, sunny, good visibility, winds soon shifting to southerly but remaining light. At 2000 m: temperature rising from -10 to -7 degrees.

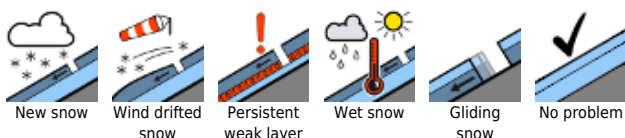
Sunday: very sunny, excellent visibility. Southerly winds will intensify to moderate in ridgeline terrain. At 2000 m: -4 degrees.

Outlook

No significant change is expected on Sunday.

Translated by Jeffrey McCabe, www.creativtrans.com

Avalanche problems



Danger ratings



Expositions

