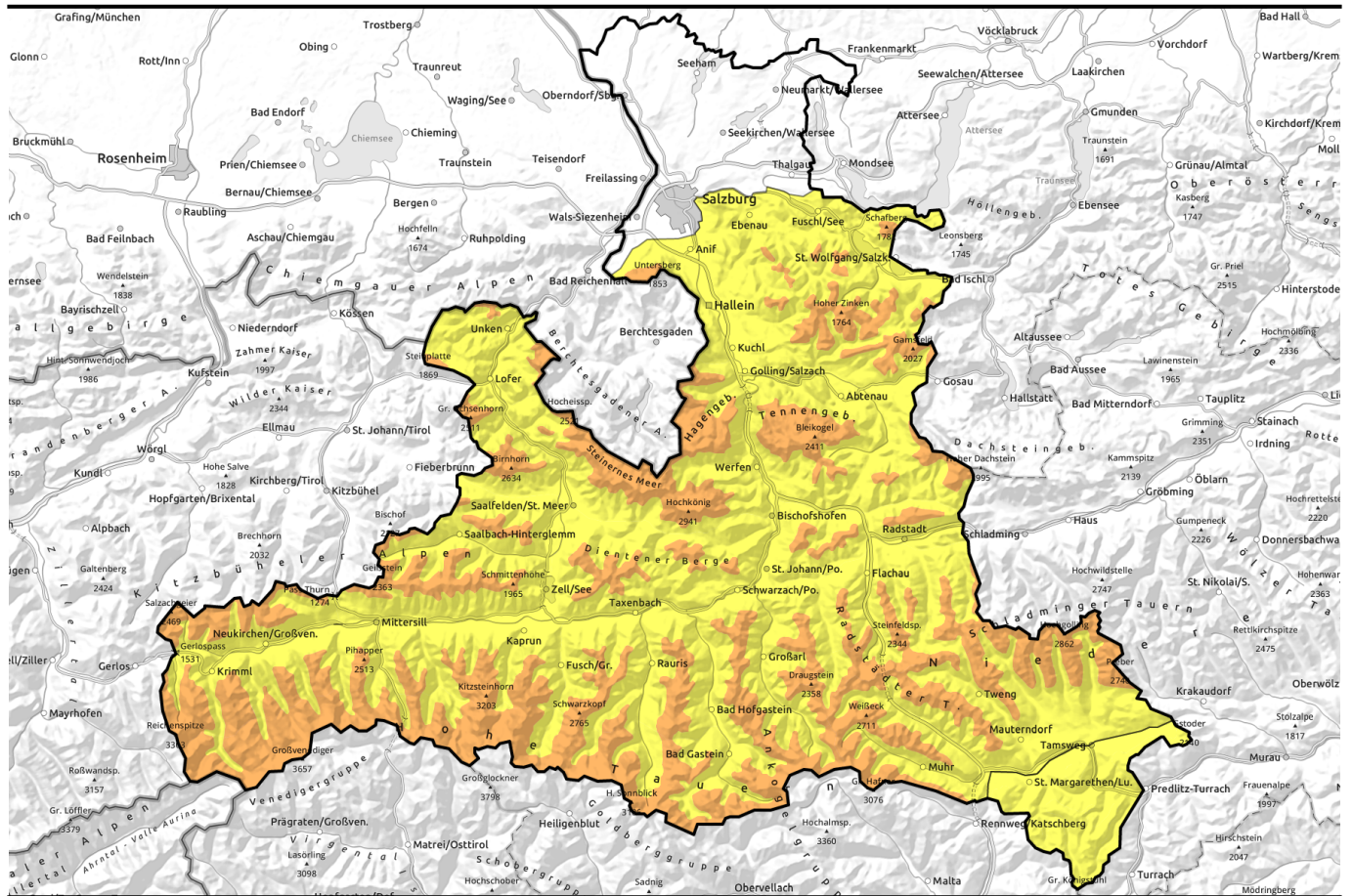


09.02.2022



Warmth is moistening snowpack and settling much

3
2 forestline

Osterhorngruppe, Gamsfeldgruppe, Untersbergstock, Chiemgauer Alpen, Heutal, Reiteralpe, Steineres Meer, Hochkönig, Hagengebirge, Göllstock, Tennengebirge, Gosaukamm, Pongauer Grasberge, Niedere Tauern Nord, Dientner Grasberge, Glocknergruppe Nord, Goldberggruppe Nord, Niedere Tauern Süd, Ankogelgruppe, Muhr, Loferer und Leoganger Steinberge, Kitzbüheler Alpen, Glemmtal, Oberpinzgauer Grasberge, Großvenedigergruppe Nord, Großvenedigergruppe Alpenhauptkamm, Glocknergruppe Alpenhauptkamm, Niedere Tauern Alpenhauptkamm, Goldberggruppe Alpenhauptkamm

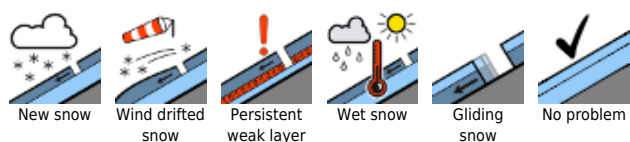


2

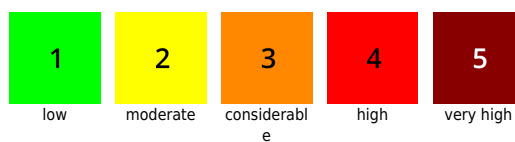
Nockberge



Avalanche problems



Danger ratings

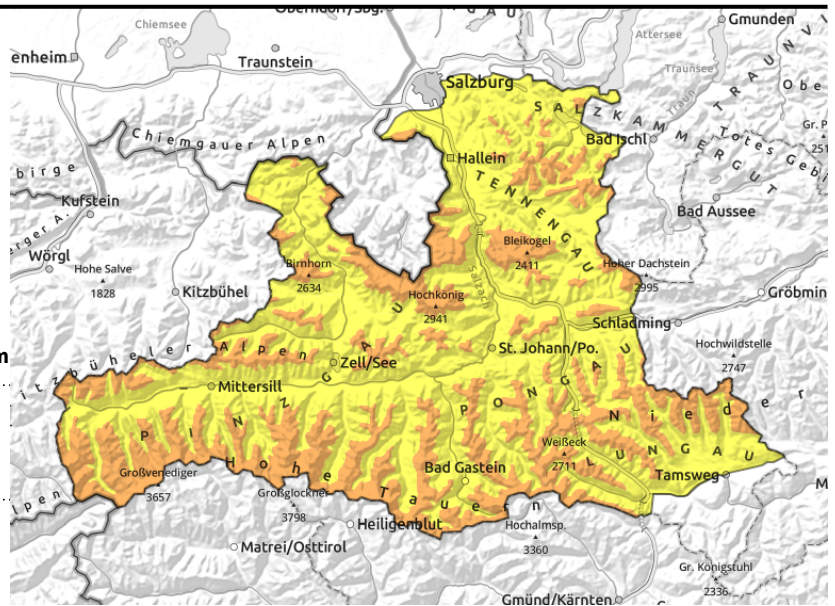


Expositions



09.02.2022

Osterhorngruppe, Gamsfeldgruppe, Untersbergstock, Chiemgauer Alpen, Heutal, Reiteralpe, Steinernes Meer, Hochkönig, Hagengebirge, Göllstock, Tennengebirge, Gosaukamm, Pongauer Grasberge, Niedere Tauern Nord, Dientner Grasberge, Glocknergruppe Nord, Goldberggruppe Nord, Niedere Tauern Süd, Ankogelgruppe, Muhr, Loferer und Leoganger Steinberge, Kitzbüheler Alpen, Glemmtal, Oberpinzgauer Grasberge, Großvenedigergruppe Nord, Großvenedigergruppe Alpenhauptkamm, Glocknergruppe Alpenhauptkamm, Niedere Tauern Alpenhauptkamm, Goldberggruppe Alpenhauptkamm



forestline



wide-ranging snowdrifts, near to and distant from ridgelines, behind protruberances, forest rims



huge warmth impulse, wet loose-snow avalanches, slag and glide-snow avalanches

Considerable snowdrift problem at high altitude

Avalanche danger above the treeline is CONSIDERABLE, below that altitude danger is MODERATE. Slabs can in some places be triggered even by minimum additional loading and grow to large size. Danger zones occur both near to and distant from ridges, behind protruberances and in gullies. On sun-drenched steep slopes which have not yet discharged at high altitudes some naturally triggered Size 2 and Size 3 avalanches are possible. At low and intermediate altitudes the warmth will cause small-to-medium loose-snow avalanches. On very steep grassy slopes, in addition, glide-snow avalanches are possible.

Snowpack structure

At the beginning of the week there was 30-60 cm of fresh snow registered widespread. Wind impact from the west to the north (in high alpine regions temporarily from east to northeast) was extreme, transported the snow highly irregularly and deposited it with hip-high sink-in depths in places. Exposed zones were windblown, atypische cornices and dunes were formed. Through the warmth, the snow has settled at all altitudes. At low and intermediate altitudes this is leading to a significant moistening of the snowpack. Potential fracture points for slabs lie inside the new snow/drifts (embedded graupel) or else in the superficial layer from Sunday (blanketed powder or thin, soft layer with graupel atop a melt-freeze crust). A fracture down to deeper layers has been observed only in isolated cases.

Weather

On Wednesday, outstanding visibility, hardly any clouds. Winds will be blowing from the northwest at 30-50 km/hr. Temperatures will rise noticeably. At 2000 m: +4 degrees; at 3000 m: 0 degrees. On Thursday, still sunny, outstanding visibility. Afternoon a few harmless clouds will pass through, the wonderful weather will remain unimpaired. In the Northern Alps, moderate westerly winds. At 2000 m:

Avalanche problems



New snow



Wind drifted snow



Persistent weak layer



Wet snow



Gliding snow



No problem

Danger ratings



1

low



2

moderate



3

considerable



4

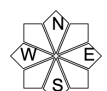
high



5

very high

Expositions



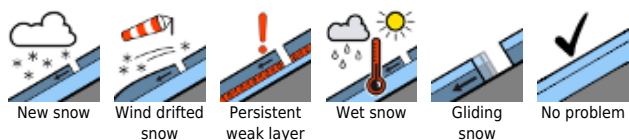
09.02.2022

slowly dropping temperatures: +3 to -1 degree; at 3000 m: from 0 to -6 degrees.

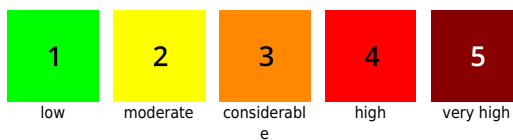
Outlook

The proneness to snowdrifts triggering will decrease. Wet-snow and glide-snow avalanches will continue to threaten at low and intermediate altitudes.

Avalanche problems



Danger ratings



Expositions



09.02.2022

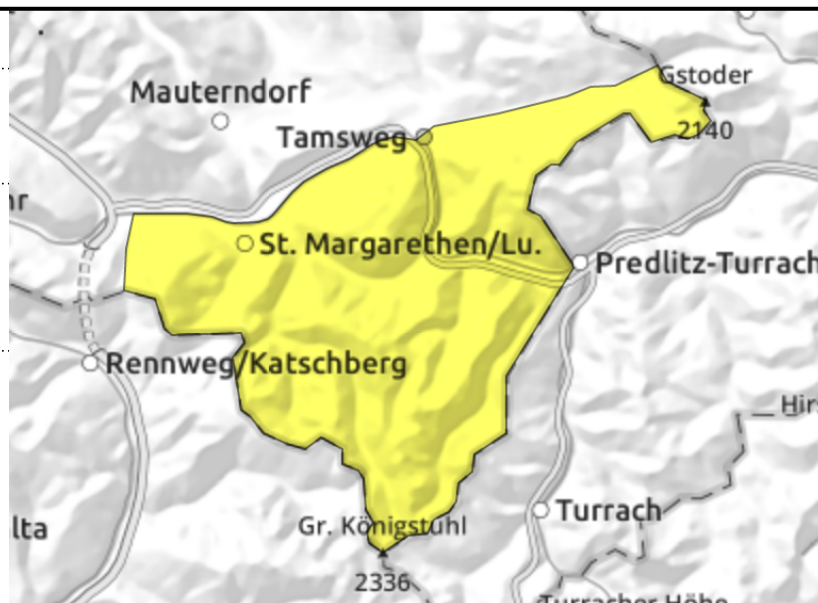
Nockberge



thin, small snowdrift masses, gullies, steep bowls in all aspects. Treacherous: transitions into drifts



hefty warmth impulse



Moderate snowdrift problem at high altitude, wet snow problem at low altitude

Avalanche danger is MODERATE. Snowdrift problem: at high altitudes there are danger zones in gullies in all aspects and increasingly on steep NE/E/S/SW facing slopes. These are not too deep but often prone to triggering and can be triggered as a small-to-medium sized avalanche even by minimum additional loading. Treacherous: transition zones from shallow to more snow. Wet snow problem: up to intermediate altitudes on sun-drenched steep slopes, small-to-medium loose-snow avalanches are possible.

Snowpack structure

At the beginning of the week, 10-20 cm of fresh snow was registered amid heavy wind impact. Exposed terrain is completely windblown, gullies and bowls are filled to the brim with drifts. Due to warmth the new snow has settled, up to intermediate altitudes it is moist, causing it to forfeit its firmness.

Weather

Outstanding visibility and sunshine on Wednesday. Winds will not disturb. Temperatures will rise. At 2000 m: 3-6 degrees.

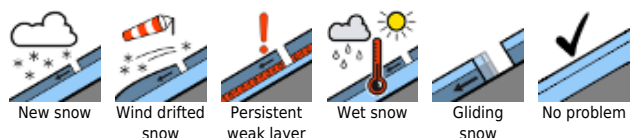
On Thursday, sunny and very good visibility. Winds will not disturb. Temperatures will recede slightly. At 2000 m: from +4 to +1 degree.

Outlook

The trigger-sensitivity of snowdrifts will diminish, the wet-snow problem will persist.

Translated by Jeffrey McCabe, www.creativtrans.com

Avalanche problems



Danger ratings



Expositions

