

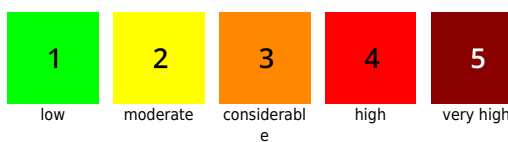
Trigger-sensitive snowdrifts also at intermediate altitudes

	<p>1300 m Osterhorngruppe, Gamsfeldgruppe, Untersbergstock, Chiemgauer Alpen, Heutal, Reiteralpe, Steinernes Meer, Hochkönig, Hagengebirge, Göllstock, Tennengebirge, Gosaukamm, Pongauer Grasberge, Niedere Tauern Nord, Dientner Grasberge, Glocknergruppe Nord, Goldberggruppe Nord, Niedere Tauern Süd, Ankogelgruppe, Muhr</p>	
	<p>1400 m Nockberge</p>	
	<p>forestline Loferer und Leoganger Steinberge, Kitzbüheler Alpen, Glemmtal, Oberpinzgauer Grasberge</p>	
	<p>Großvenedigergruppe Nord, Großvenedigergruppe Alpenhauptkamm, Glocknergruppe Alpenhauptkamm, Goldberggruppe Alpenhauptkamm, Niedere Tauern Alpenhauptkamm</p>	

Avalanche problems



Danger ratings

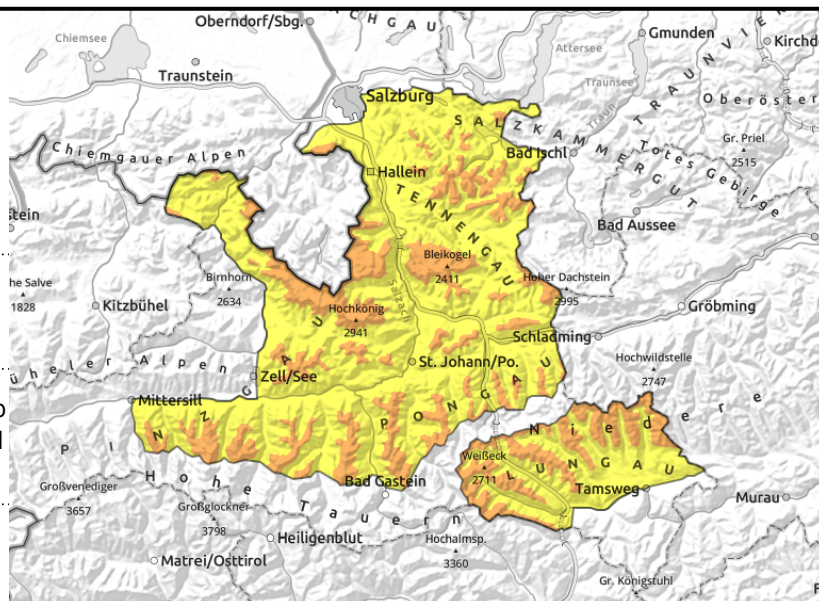


Expositions



08.02.2022

Osterhorngruppe, Gamsfeldgruppe, Untersbergstock, Chiemgauer Alpen, Heutal, Reiteralpe, Steinernes Meer, Hochkönig, Hagengebirge, Göllstock, Tennengebirge, Gosaukamm, Pongauer Grasberge, Niedere Tauern Nord, Dientner Grasberge, Glocknergruppe Nord, Goldberggruppe Nord, Niedere Tauern Süd, Ankogelgruppe, Muhr



wide-ranging snowdrifts near to and distant from ridges, behind protruberances, at forest rims



cold and loose, highly irregularly distributed due to winds

Wide-ranging, highly atypical snowdrifts

Avalanche danger above 1300 m is CONSIDERABLE, below that altitude danger is MODERATE. Slabs can be triggered even by the weight of one sole person in many places. Danger zones exist near to and distant from ridges, behind protruberances and in sparsely wooded zones. Also gullies and bowls are filled to the brim with drifts. Triggered avalanches are generally medium sized, but at high altitudes can grown to large size if they fracture down to deeper layers of the snowpack. In high alpine starting zones, avalanches can develop snow clouds.

Snowpack structure

Atop a well settled snowpack, 30 to 50 cm of cold, fresh snow was registered on Monday. Wind impact, largely from the northwest, was extreme, transported the snow and deposited huge masses. Exposed zones are utterly windblown, atypical cornices and dunes have formed. Possible fracture points for slabs lie inside the fresh snow and drifts (graupel), particularly the surface from Sunday (blanketed powder or a thin soft layer with graupel atop the melt-freeze crust). More deeply embedded layers are weak, triggerable by large additional loading.

Weather

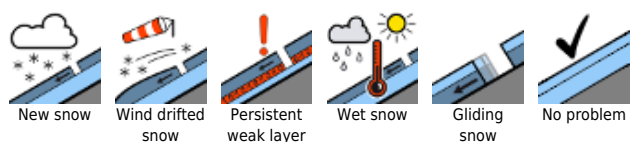
On Tuesday, visibility will vary, the peaks will be shrouded in fog but below it will be clear. The NW winds will be strong in the Tauern and Northern Alps, but slacken off during the day. Temperatures will rise. At 2000 m: -8 to -3 degrees; at 3000 m: -10 to -4 degrees.

On Wednesday outstanding visibility, hardly any clouds. Winds will be blowing at 30 to 50 km/hr. Temperatures will rise. At 2000 m: 4 degrees. At 3000 m: 0 degrees.

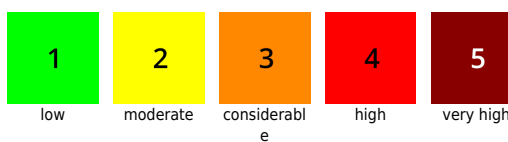
Outlook

On Wednesday sunshine and warmer temperatures, the new snow will be moist at low and intermediate altitudes (gliding snow, wet-snow problem). On sunny high-altitudes slopes, further settling.

Avalanche problems



Danger ratings

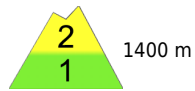


Expositions

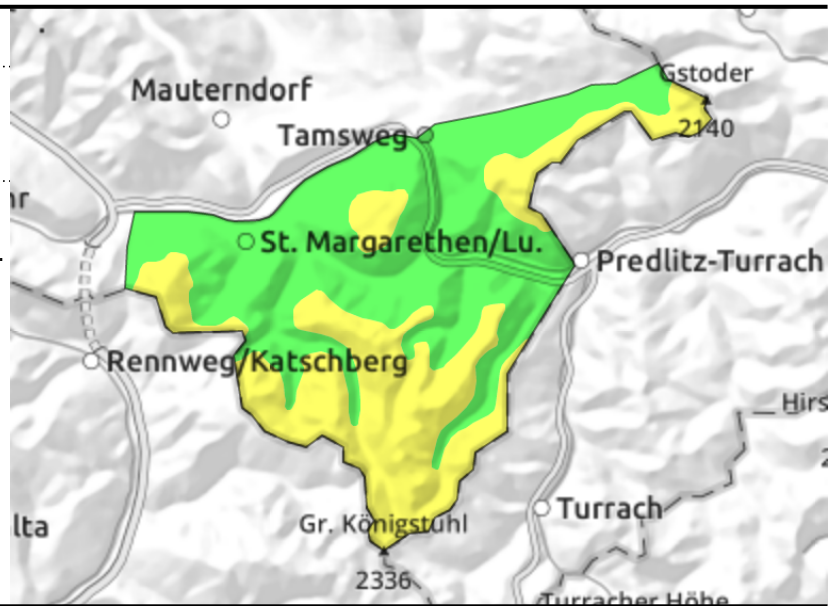


08.02.2022

Nockberge



thin, small snowdrift masses, gullies and bowls in all aspects. Treacherous: transitions into the drifted zones.



Fresh snowdrifts, mostly thin, but often easily triggered

Avalanche danger above 1400 m is MODERATE, below that altitude danger is LOW. New snow and stormy winds are generating new snowdrifts in all aspects, esp. in steep NE/E/S/SW aspects. These are not thick, but are prone to triggering, even by minimum additional loading they can release a medium sized slab. Treacherous are the transitions from shallow to deep snow.

Snowpack structure

The snowpack has settled well. Amid heavy wind impact about 10 cm of new snow has been registered. Exposed terrain is windblown, gullies and bowls are filled to the brim with drifts.

Weather

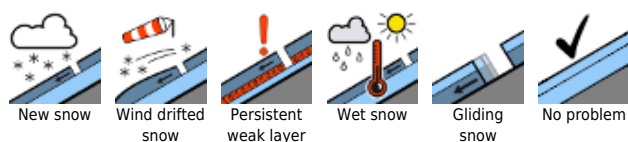
On Tuesday the NW winds wil initially strong to stormy, then slacken off gradually. Visibility will vary, mostly be adequate. Temperatures will rise. At 2000 m: from -9 to -3 degrees.

Top visibility and sunshine on Wednesday. Winds will no longer disturb, temperatures will rises. At 2000m: 3-6 degrees.

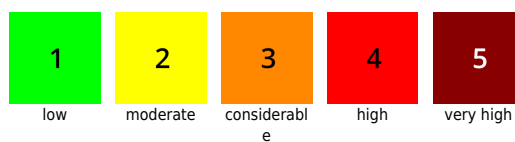
Outlook

Gradually receded avalanche danger. New snow and new drifts will settle. At low altitudes, the new snow will be moist.

Avalanche problems



Danger ratings



Expositions



08.02.2022

Loferer und Leoganger Steinberge, Kitzbüheler Alpen, Glemmtal, Oberpinzgauer Grasberge



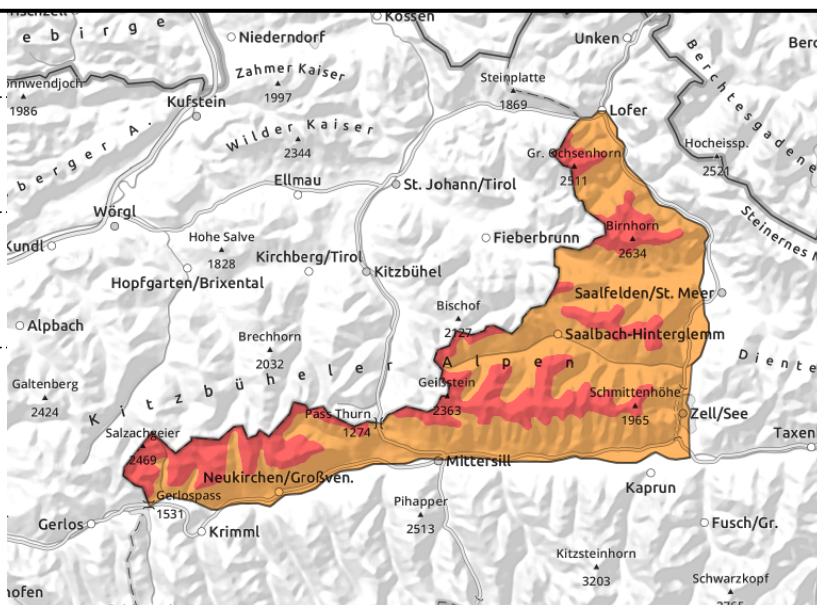
forestline



wide-ranging drifts near to and distant from ridges, behind protruberances, at forest rims



cold, very loose, very irregularly distributed



Delicate situation, high proneness to triggering

Avalanche danger above the treeline is HIGH, below that altitude danger is CONSIDERABLE. Triggering a medium-to-large slab is possible even by minimum additional loading - in fact, it is probable. Danger zones exist both near to and distant from ridges behind protruberances and in sparsely wooded zones. The fresh drifts are highly prone to triggering. The situation is delicate and demands high restraint in outlying terrain, as well as good knowledge of the landscape and avalanche knowledge.

Snowpack structure

Atop a well settled snowpack, 30 to 50 cm of cold, fresh snow was registered on Monday. Wind impact, largely from the northwest, was extreme, transported the snow and deposited huge masses. Exposed zones are utterly windblown, atypical cornices and dunes have formed. Possible fracture points for slabs lie inside the fresh snow and drifts (graupel), particularly the surface from Sunday (blanketed powder or a thin soft layer with graupel atop the melt-freeze crust). More deeply embedded layers are weak, triggerable by large additional loading.

Weather

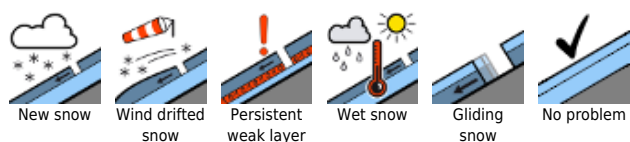
On Tuesday, visibility will vary, the peaks will be shrouded in fog but below it will be clear. The NW winds will be strong in the Tauern and Northern Alps, but slacken off during the day. Temperatures will rise. At 2000 m: -8 to -3 degrees.

On Wednesday outstanding visibility, hardly any clouds. Winds will be blowing at 30 to 50 km/hr. Temperatures will rise. At 2000 m: 4 degrees.

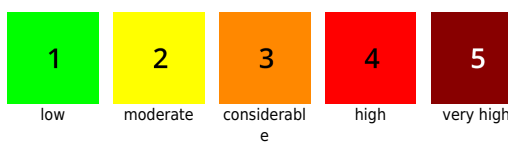
Outlook

On Wednesday sunshine and warmer temperatures, the new snow will be moist at low and intermediate altitudes (gliding snow, wet-snow problem). On sunny high-altitudes slopes, further settling.

Avalanche problems



Danger ratings

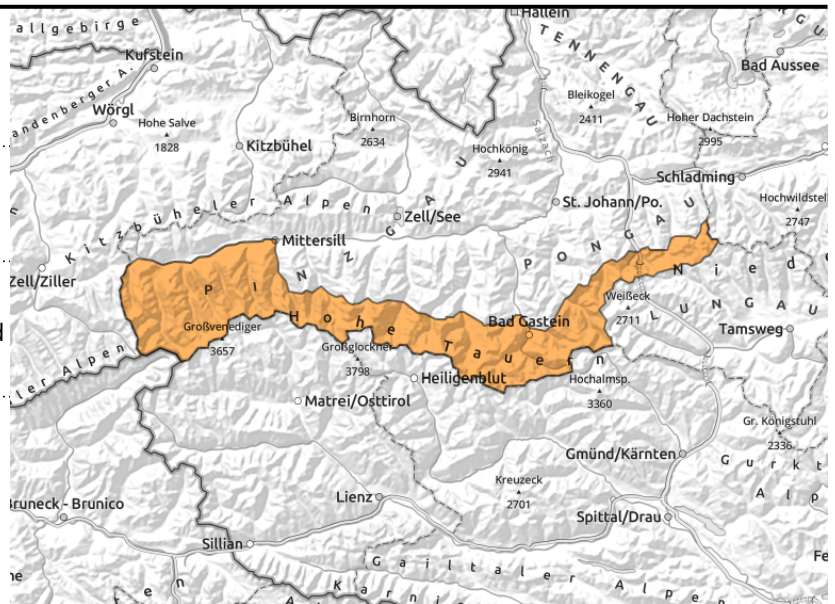


Expositions



08.02.2022

**Großvenedigergruppe Nord, Großvenedigergruppe
Alpenhauptkamm, Glocknergruppe
Alpenhauptkamm, Goldberggruppe
Alpenhauptkamm, Niedere Tauern Alpenhauptkamm**



wide-ranging snowdrift near to and distant from ridges, behind protruberances, at forest rims



cold, very loose, very irregularly distributed

Wide-ranging and highly atypical snowdrifts

CONSIDERABLE danger prevails. Slabs can be triggered even by minimum additional loading. Danger zones exist both near to and distant from ridges, behind protruberances and in sparsely wooded zones. Also gullies and bowls are filled to the brim with drifts. Triggered avalanches can be medium to large sized, if at high altitudes a fracture goes deeper down they can grow to large size. In high alpine starting zones, avalanches can develop a snow cloud.

Snowpack structure

Atop a well settled snowpack, 30 to 50 cm of cold, fresh snow was registered on Monday. Wind impact, largely from the northwest, was extreme, transported the snow and deposited huge masses. Exposed zones are utterly windblown, atypical cornices and dunes have formed. Possible fracture points for slabs lie inside the fresh snow and drifts (graupel), particularly the surface from Sunday (blanketed powder or a thin soft layer with graupel atop the melt-freeze crust). More deeply embedded layers are weak, triggerable by large additional loading.

Weather

On Tuesday, visibility will vary, the peaks will be shrouded in fog but below it will be clear. The NW winds will be strong in the Tauern and Northern Alps, but slacken off during the day. Temperatures will rise. At 2000 m: -8 to -3 degrees; at 3000 m: -10 to -4 degrees.

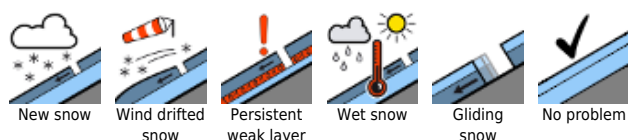
On Wednesday outstanding visibility, hardly any clouds. Winds will be blowing at 30 to 50 km/hr. Temperatures will rise. At 2000 m: 4 degrees. At 3000 m: 0 degrees.

Outlook

On Wednesday sunshine and warmer temperatures, the new snow will be moist at low and intermediate altitudes (gliding snow, wet-snow problem). On sunny high-altitudes slopes, further settling.

Translated by Jeffrey McCabe, www.creativtrans.com

Avalanche problems



Danger ratings



Expositions

