

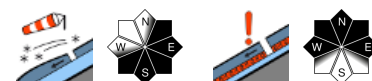
Snowdrift problem at high altitude



Osterhorngruppe, Gamsfeldgruppe, Untersbergstock, Steinernes Meer, Hochkönig, Hagengebirge, Göllstock, Tennengebirge, Gosaukamm, Chiemgauer Alpen, Heutal, Reiteralpe, Loferer und Leoganger Steinberge, Kitzbüheler Alpen, Glemmtal, Dientner Grasberge, Pongauer Grasberge, Niedere Tauern Nord, Niedere Tauern Alpenhauptkamm, Niedere Tauern Süd, Ankogelgruppe, Muhr, Goldberggruppe Alpenhauptkamm, Goldberggruppe Nord, Oberpinzgauer Grasberge, Großvenedigergruppe Nord, Großvenedigergruppe Alpenhauptkamm, Glocknergruppe Nord, Glocknergruppe Alpenhauptkamm



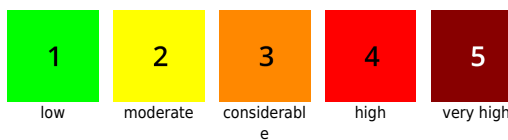
Nockberge



Avalanche problems



Danger ratings

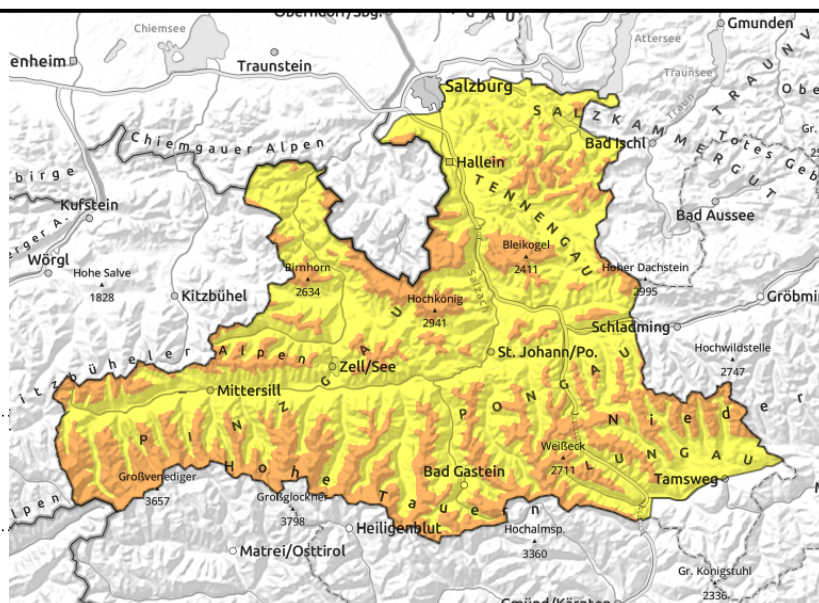


Expositions



05.02.2022

Osterhorngruppe, Gamsfeldgruppe, Untersbergstock, Steinernes Meer, Hochkönig, Hagengebirge, Göllstock, Tennengebirge, Gosaukamm, Chiemgauer Alpen, Heutal, Reiteralpe, Loferer und Leoganger Steinberge, Kitzbüheler Alpen, Glemmtal, Dientner Grasberge, Pongauer Grasberge, Niedere Tauern Nord, Niedere Tauern Alpenhauptkamm, Niedere Tauern Süd, Ankogelgruppe, Muhr, Goldberggruppe Alpenhauptkamm, Goldberggruppe Nord, Oberpinzgauer Grasberge, Großvenedigergruppe Nord, Großvenedigergruppe Alpenhauptkamm, Glocknergruppe Nord, Glocknergruppe Alpenhauptkamm



forestline



new snow/snowdrift problem: often triggerable by min.add.loading, possibly large avalanches, in backcountry above tree line



medium-to-large avalanches, moist-snow avalanches in rocky steep terrain

Wind-loaded zones treacherous esp. near ridgelines

Danger is still **CONSIDERABLE (3)**, below that altitude danger is **MODERATE**. The danger stems primarily from fresh and older snowdrifts. Backcountry tours at high altitude demand caution and restraint. Above the treeline there are spots where one sole person can trigger a slab, whether in ascent or descent. Avalanches can grow to large size. Most treacherous is steep ridgeline terrain in extended eastern aspects (N/E/S), steep gullies and protruberances distant from ridgelines.

Glide-snow avalanches can trigger naturally in very steep grassy terrain. They can become medium sized, in isolated cases large sized.

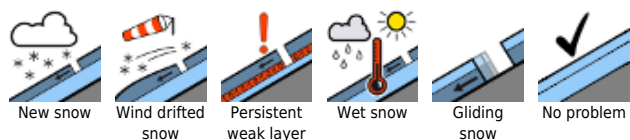
Snowpack structure

The heavy snowfall from the beginning of the week has settled well thanks to sunny and mild weather conditions. Trigger-sensitivity and naturally triggered activity of slab avalanches have decrease significantly. But there are still potential fracture points for slab avalanches beneath the superficially wind-pressed snow in exposed terrain inside the masses of fresh snow themselves and at the borders to the old snowpack (soft, faceted crystals). Atop them lie thin layers of fresh snow (max.5 cm) which were transported by NW winds and generated shallow drifts. On very steep grassy slopes below 1800 m the entire snowpack is gliding over the ground in some places.

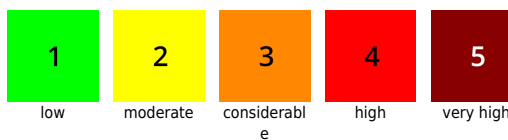
Weather

On Friday night, minor snowfall (max.5 cm). Along the Tauern, a bit of light snowfall is possible until morning as the clouds begin to disperse. Later on, visibility will improve, also in the inneralpine regions. At intermediate altitudes, brisk NW winds, at high altitudes blowing at 50-70 km/hr. At 2000 m: -7 degrees; at 3000 m: -13 degrees.

Avalanche problems



Danger ratings



Expositions



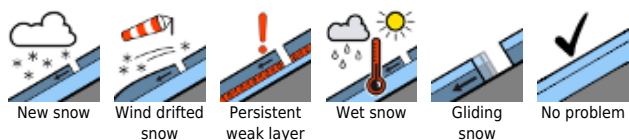
05.02.2022

On Sunday, high clouds will impede the sun, light conditions can be diffuse, but visibility will be adequate. At intermediate altitudes, a moderate to brisk SW wind will be blowing, strong on the Main Tauern Ridge. At 2000 m: -3 degrees; at 3000 m: -9 degrees.

Outlook

Little change expected. Heed fresh snowdrifts.

Avalanche problems



Danger ratings

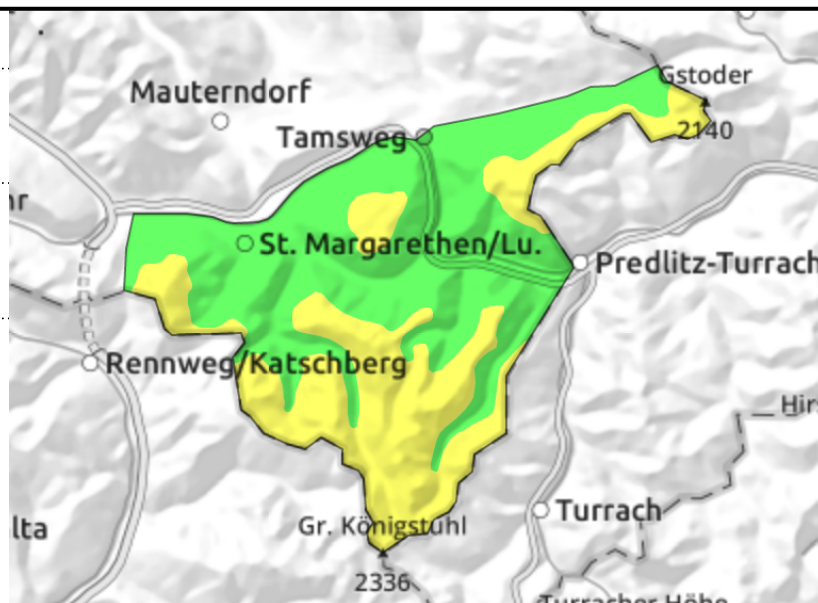
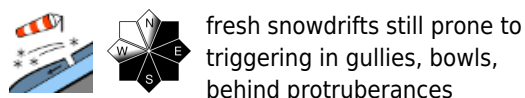


Expositions



05.02.2022

Nockberge



AVOID wind-loaded zones

Avalanche danger above the treeline is MODERATE, below that altitude danger is LOW. Avalanche prone locations are found in steep gullies and bowls in all aspects and behind steep protruberances and, particularly, at forest rims. There in some places, older and fresh snowdrift accumulations can be triggered by one sole person, in ascent or descent. Slabs can grow to medium size.

Snowpack structure

The latest round of snowfall and snowdrifts from storm winds lie atop a weak layer and are still prone to triggering. Also older snowdrift masses and crusts lurk, beneath which are soft, faceted crystals, and which can be triggered by large additional loading.

Weather

On Saturday, windy weather, clouds will soon disperse, visibility will then be quite good. At high altitudes a NW wind will be blowing at 30-50 km/hr. At 2000 m: -6 degrees. Sunday will bring high-altitude cloudbanks, generally good visibility, slackening winds. At 2000 m: -3 degrees.

Outlook

No major change is expected.

Translated by Jeffrey McCabe, www.creativtrans.com

Avalanche problems



Danger ratings



Expositions

