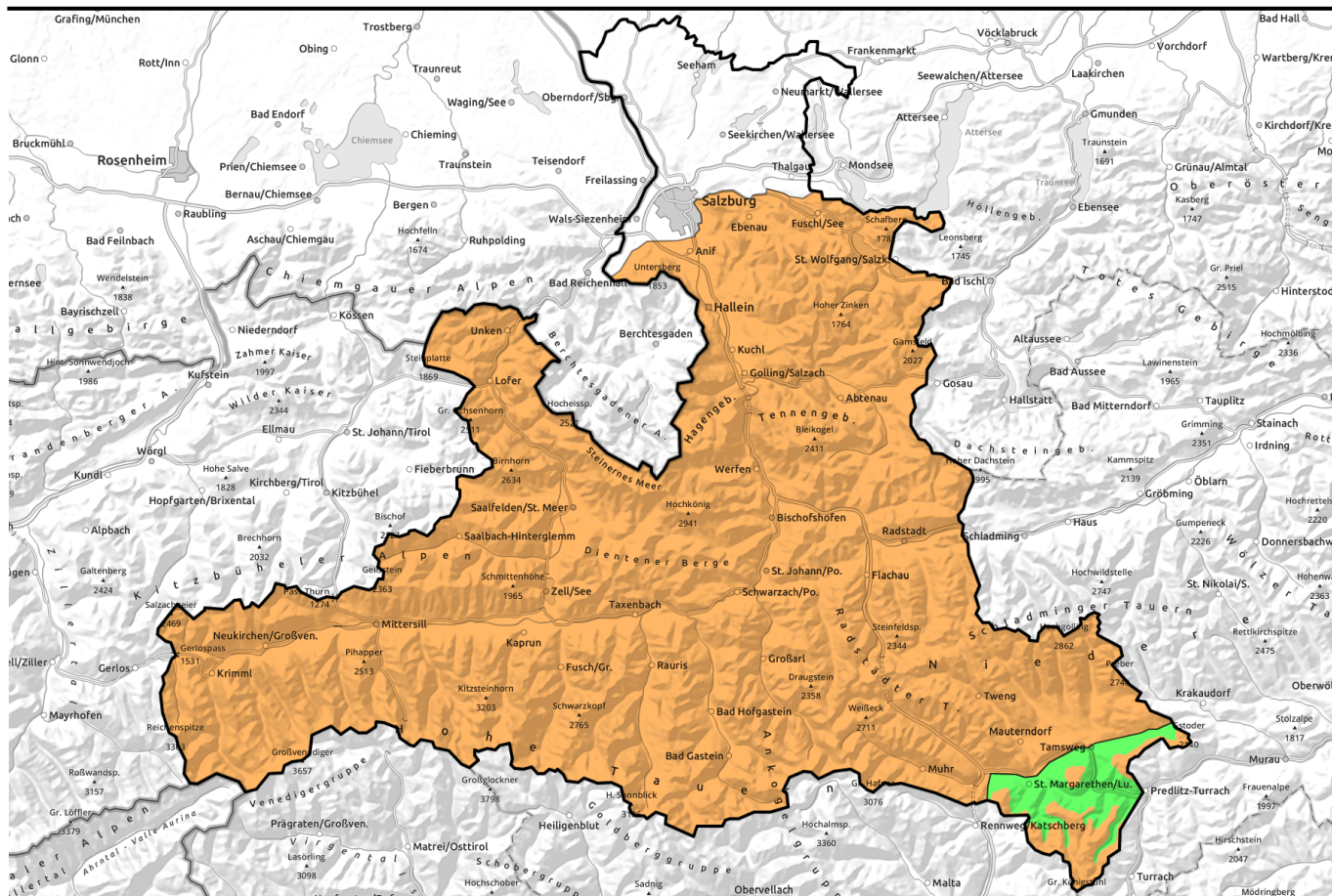


04.02.2022



Still treacherous avalanche dangers widespread



Osterhorngruppe, Gamsfeldgruppe, Untersbergstock, Steinernes Meer, Hochkönig, Hagengebirge, Göllstock, Tennengebirge, Gosaukamm, Chiemgauer Alpen, Heutal, Reiteralpe, Loferer und Leoganger Steinberge, Kitzbüheler Alpen, Glemmtal, Dientner Grasberge, Pongauer Grasberge, Niedere Tauern Nord, Niedere Tauern Alpenhauptkamm, Niedere Tauern Süd, Ankogelgruppe, Muhr, Goldberggruppe Alpenhauptkamm, Goldberggruppe Nord, Oberpinzgauer Grasberge, Großvenedigergruppe Nord, Großvenedigergruppe Alpenhauptkamm, Glocknergruppe Nord, Glocknergruppe Alpenhauptkamm

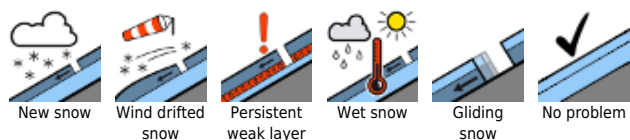


forestline

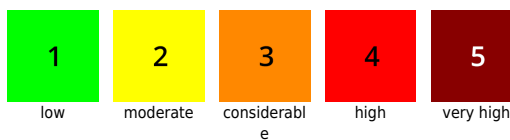
Nockberge



Avalanche problems



Danger ratings

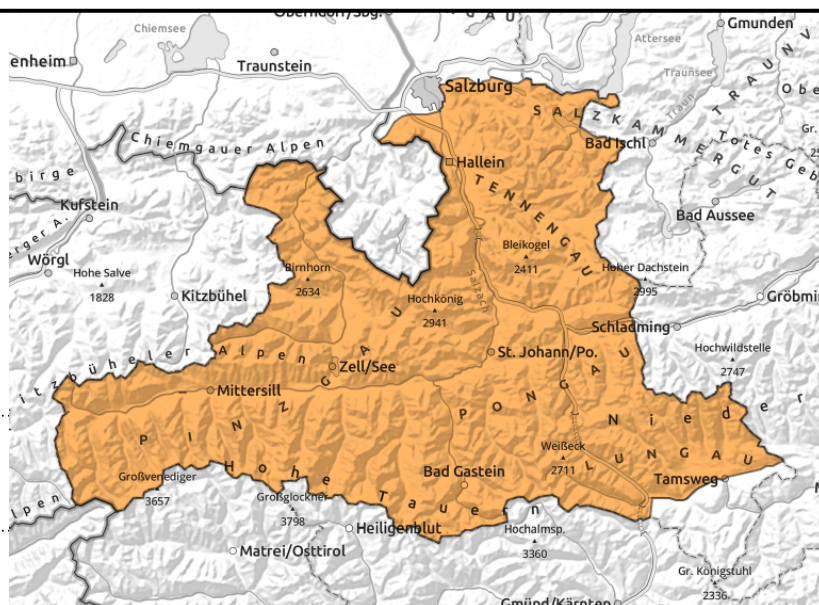


Expositions



04.02.2022

Osterhorngruppe, Gamsfeldgruppe, Untersbergstock, Steinernes Meer, Hochkönig, Hagengebirge, Göllstock, Tennengebirge, Gosaukamm, Chiemgauer Alpen, Heutal, Reiteralpe, Loferer und Leoganger Steinberge, Kitzbüheler Alpen, Glemmtal, Dientner Grasberge, Pongauer Grasberge, Niedere Tauern Nord, Niedere Tauern Alpenhauptkamm, Niedere Tauern Süd, Ankogelgruppe, Muhr, Goldberggruppe Alpenhauptkamm, Goldberggruppe Nord, Oberpinzgauer Grasberge, Großvenedigergruppe Nord, Großvenedigergruppe Alpenhauptkamm, Glocknergruppe Nord, Glocknergruppe Alpenhauptkamm



new snow/snowdrift problem: often triggerable by min.add.loading, possibly large avalanches, in backcountry above treeline



medium-to-large avalanches, moist-snow avalanches in rocky steep terrain

Restraint imperative above the treeline in backcountry

Danger is still **CONSIDERABLE (3)**. Above the treeline the danger stems from new snow and snowdrifts. Below the treeline and on sunny slopes the danger stems from rising temperatures. All enterprises in backcountry require caution and restraint.

In outlying terrain are numerous spots where a **slab** can be triggered, particularly with ascending altitude. Avalanches can grow to medium-to-large size. Most treacherous: steep ridgeline terrain in N/E/S aspects and behind protruberances distant from ridgelines above 2000 m. The impulse of one single persons is sufficient.

Due to sunshine and warmth, **glide-snow avalanches** can release naturally in very steep grassy terrain. In the regions where snowfall has been heaviest they can grow to medium-to-large size. In steep rocky terrain, moist **loose-snow avalanches** (small-to-medium) can release.

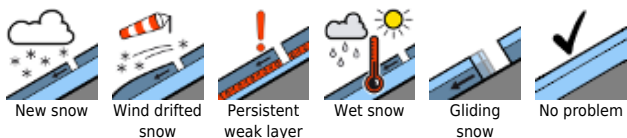
Snowpack structure

Numerous reports and far-reaching helicopter flights have confirmed Danger Level 4 of the last 2 days. Depending on the massif, numerous to many large-to-very-large sized releases on Wednesday and Wednesday night occurred, most in extended east-facing terrain, most near ridges and all of them slabs. Explosions were highly successful, with above average results. West-facing slopes over generally windblown.

Due to warmth and initial settling of the new snow (60-120 cm) the proneness to triggering and naturally triggering tendencies of dry slabs have decreased somewhat. Fracture spots of triggered avalanches were in the new snow itself or at the borders to the old snowpack (embedded faceted weak layers).

At low altitudes and on sunny slopes at intermediate altitude, the settling will create huge gliding

Avalanche problems



Danger ratings



Expositions



04.02.2022

snow movements.

Weather

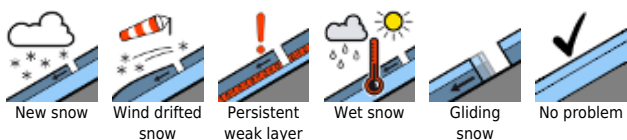
On Friday, general sunshine. Winds will be light to moderate. At 2000 m: -1 degree; at 3000 m: -7 degrees.

On Friday night, minor snowfall is anticipated. On Saturday the clouds will soon disperse due to winds, sunshine will be the result. At intermediate altitudes, brisk NW winds, often stormy at summit altitudes. At 2000 m: -9 degrees; at 3000 m: -14 degrees.

Outlook

Avalanche danger will continue to recede.

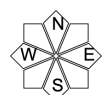
Avalanche problems



Danger ratings



Expositions

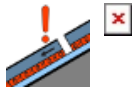


04.02.2022

Nockberge 



fresh snowdrift masses in gullies, behind protruberances: trigger-sensitive



in steep shady terrain

Avoid the latest snowdrift accumulations

Avalanche danger above the treeline is still **CONSIDERABLE**, below that altitude danger is LOW. Avalanche prone locations occur in steep gullies and bowls in all aspects and behind protruberances and, in particular, at forest rims. There, a snowdrift mass can be triggered even by the weight of one sole person, in ascent or descent. Slabs can grow to medium size.

Snowpack structure

The latest fresh fallen snow (in bouts, 20-40 cm) and the snowdrifts due to storm winds were deposited atop a weakened layer and are still prone to triggering. Also older snowdrift accumulations and crusts (beneath which are soft, faceted layers) are in isolated cases triggerable by large additional loading.

Weather

On **Friday**, mostly sunshine. Winds will be light to moderate. At 2000 m: -1 degree.

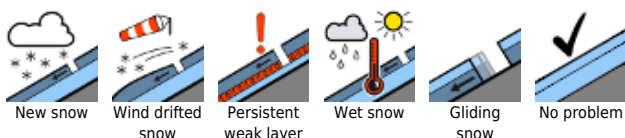
On **Saturday**, clouds will soon disperse due to winds and let the sun come out. At intermediate altitudes, brisk NW winds, stormy at summit altitude. At 2000 m: -9 degrees.

Outlook

Avalanche danger will continue to recede.

Translated by Jeffrey McCabe, www.creativtrans.com

Avalanche problems



Danger ratings



Expositions

