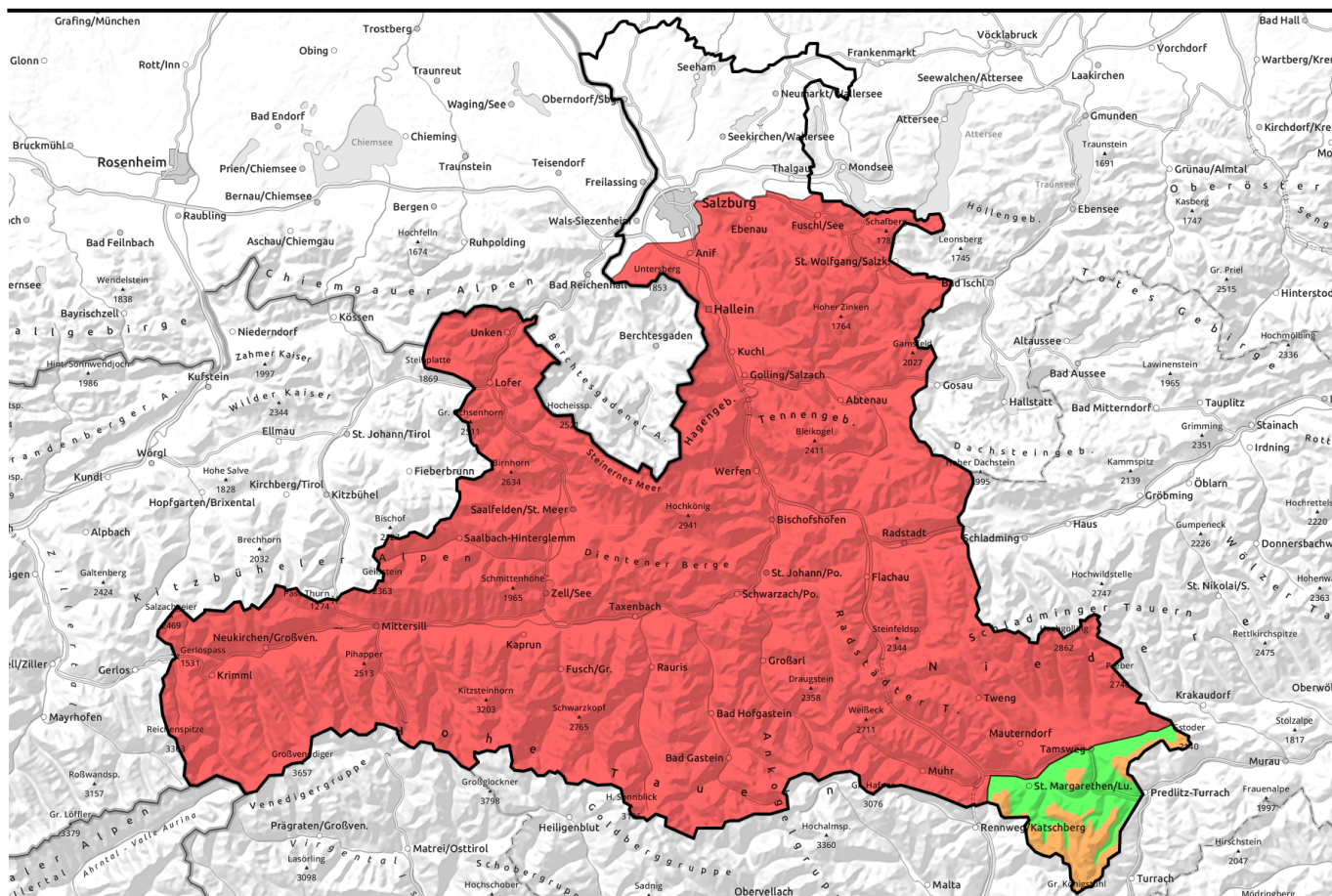


02.02.2022



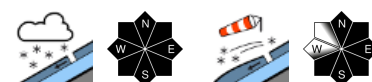
## Heavy snowfall and storm wind. Also: naturally triggered avalanches!



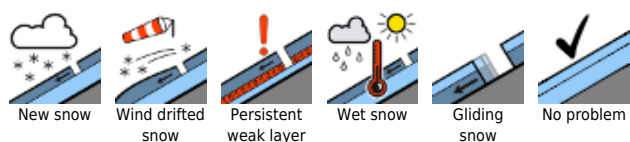
Nockberge



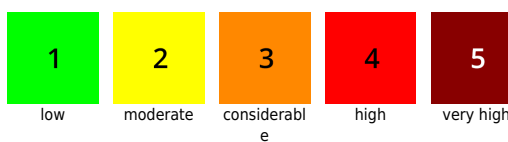
Osterhorngruppe, Gamsfeldgruppe, Untersbergstock, Steinernes Meer, Hochkönig, Hagengebirge, Göllstock, Tennengebirge, Gosaukamm, Chiemgauer Alpen, Heutal, Reiteralpe, Loferer und Leoganger Steinberge, Kitzbüheler Alpen, Glemmtal, Oberpinzgauer Grasberge, Goldberggruppe Nord, Pongauer Grasberge, Niedere Tauern Nord, Niedere Tauern Alpenhauptkamm, Niedere Tauern Süd, Ankogelgruppe, Muhr, Goldberggruppe Alpenhauptkamm, Glocknergruppe Nord, Großvenedigergruppe Nord, Großvenedigergruppe Alpenhauptkamm, Glocknergruppe Alpenhauptkamm, Dientner Grasberge



### Avalanche problems



### Danger ratings

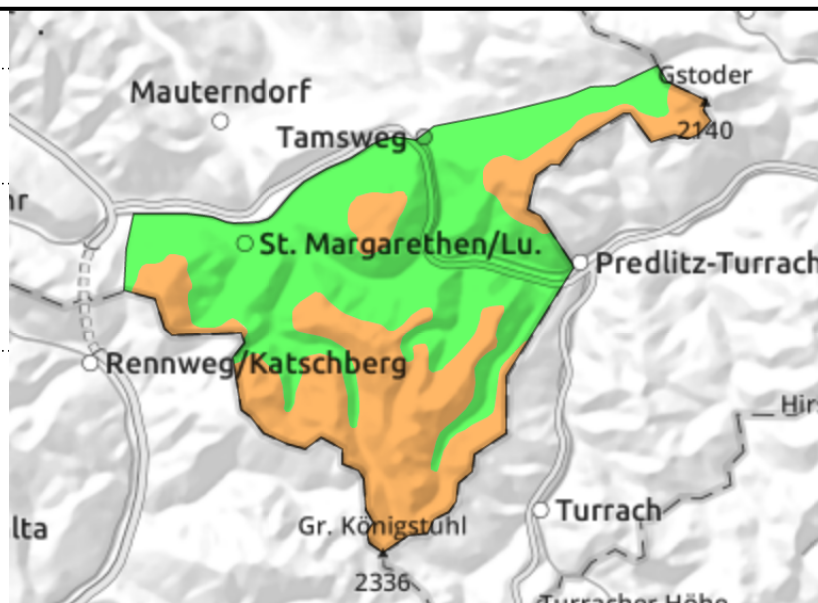
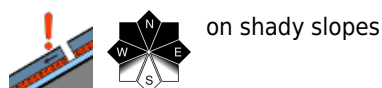
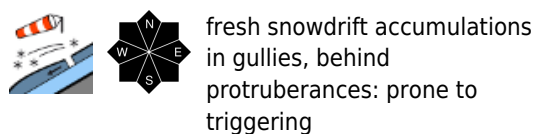


### Expositions



**02.02.2022**

**Nockberge**



**Fresh snow + storm winds**

Avalanche danger above the treeline is **CONSIDERABLE**, below that altitude danger is low. Avalanche prone locations are found wherever fresh snowdrifts have been deposited on steep slopes. There, the snowdrifts can be triggered even by minimum additional loading. Caution urged in very steep zones of gullies, bowls and behind protruberances. Potential slabs are small to medium-sized.

**Snowpack structure**

Added to the snowfall at the start of the week (max. 15 cm) an additional 15-25 cm will still come. The NW storm winds will generate fresh snowdrift accumulations, these will be deposited atop the cold base and be prone to triggering. The fresh snow will blanket older snowdrifts and crusts, beneath which are soft, faceted crystal layers. However, these are fracture-relevant only in isolated cases in case of very large additional loading.

**Weather**

On Wednesday, stormy NW winds (60-80 km/hr) will bring snow showers from the north. Heavy cloud cover will reduce visibility, alternating with windows of sunshine. At 2000m: -7 degrees. On Thursday, a few snowflakes only in early morning, thereafter it will be dry. Clouds will disperse gradually, visibility improve, winds slacken off significantly. At 2000 m: -2 degrees, measurably milder.

**Outlook**

On Thursday, no significant change. AVOID steep wind-loaded zones.

**Avalanche problems**



**Danger ratings**

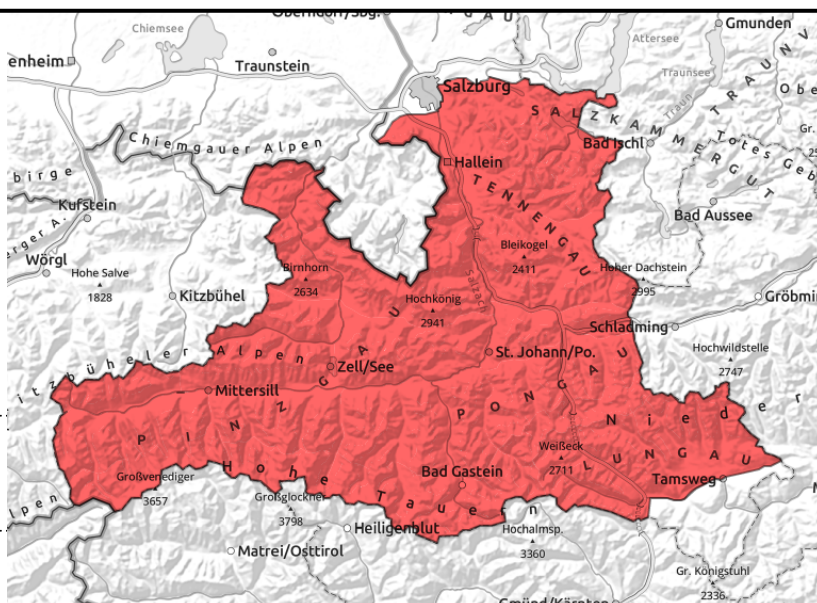


**Expositions**



**02.02.2022**

Osterhorngruppe, Gamsfeldgruppe, Untersbergstock, Steinernes Meer, Hochkönig, Hagengebirge, Göllstock, Tennengebirge, Gosaukamm, Chiemgauer Alpen, Heutal, Reiteralpe, Loferer und Leoganger Steinberge, Kitzbüheler Alpen, Glemmtal, Oberpinzgauer Grasberge, Goldberggruppe Nord, Pongauer Grasberge, Niedere Tauern Nord, Niedere Tauern Alpenhauptkamm, Niedere Tauern Süd, Ankogelgruppe, Muhr, Goldberggruppe Alpenhauptkamm, Glocknergruppe Nord, Großvenedigergruppe Nord, Großvenedigergruppe Alpenhauptkamm, Glocknergruppe Alpenhauptkamm, Dientner Grasberge



additional 25-50 cm of fresh snow, instable atop cold base, naturally triggered avalanches, avalanches with snow cloud



easily triggered down to sparsely wooded zones

## High danger due to fresh snow and new drifts

The danger of avalanches is **HIGH - Danger Level 4**. Avalanches can be triggered by minimum additional loading at all altitudes. In numerous steep zones, **triggering** a medium-to-large sized slab is downright **probable**. This applies to gullies and steep wind-loaded slopes in all aspects, particularly at forest rims.

In extremely steep terrain, **numerous avalanches will trigger naturally**. Releases at high altitudes can develop snow clouds and grow to large size, in the zones of the Northern Alps and Tauern where snowfall has been heaviest, also very large size and even endanger exposed transportation routes.

### Snowpack structure

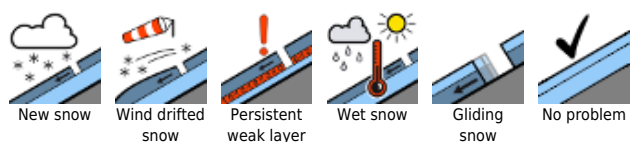
Until Tuesday afternoon there was heavy snowfall, in the mountains accompanied by stormy W/N winds, bringing 30-70 cm of new snow widespread. On Wednesday there will be another 30-50 cm added to it. The NW storm winds will transport the snow intensively and far-reachingly, deposit large drifts in gullies and bowls and, particularly, at forest rims and in sparsely wooded zones. The snowdrift accumulations lie atop a cold snow base and are prone to triggering. Fracture points exist inside the new snow and drifts themselves. However, when avalanches release they can also fracture to deeper-down layers in the upper part of the snowpack.

### Weather

On Tuesday night and during the day on Wednesday, snowfall from thick clouds, persistent and heavy. Amid stormy NW winds, temperatures will rise slightly. At 2000 m: -8 degrees; at 3000 m: -14 degrees.

On Thursday, the snowfall will taper off during the morning. In the afternoon, high altitude cloud, often good visibility. Winds will be moderate, brisker at high

#### Avalanche problems



#### Danger ratings



#### Expositions



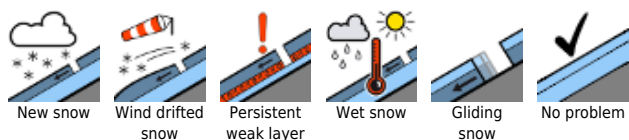
**02.02.2022**

## Outlook

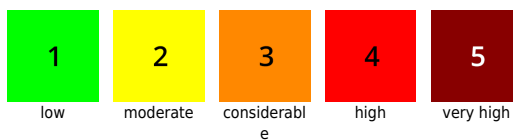
The situation for winter sports enthusiasts remains tense, particularly at high altitudes: that means danger level 4 (HIGH). The culmination of naturally triggered avalanche activity is probably on Thursday.

Translated by Jeffrey McCabe, [www.creativtrans.com](http://www.creativtrans.com)

### Avalanche problems



### Danger ratings



### Expositions

