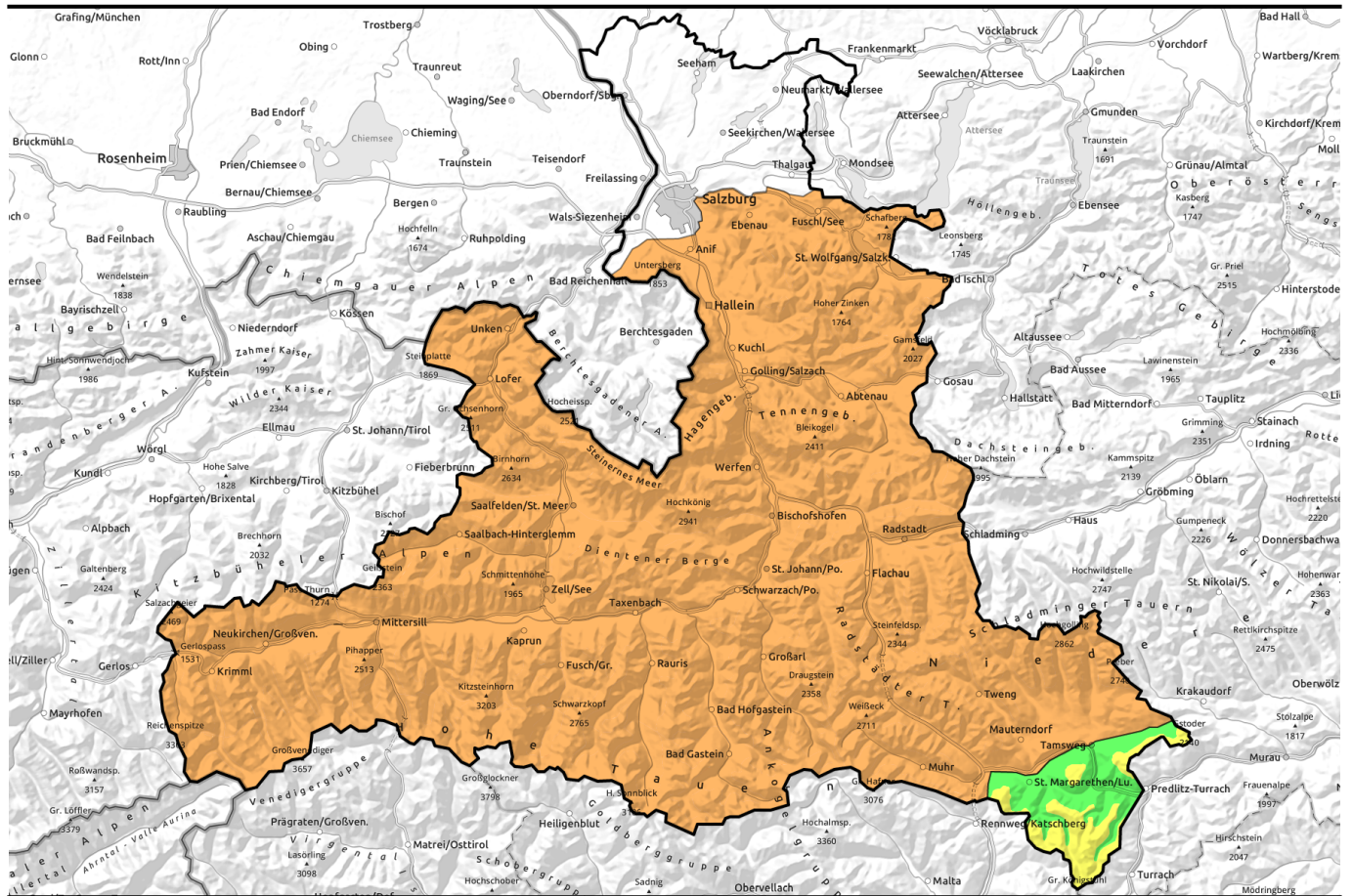


01.02.2022



Heavy snowfall plus wind: high avalanche danger



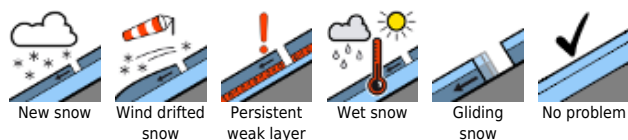
Nockberge



Osterhorngruppe, Gamsfeldgruppe, Untersbergstock, Steinernes Meer, Hochkönig, Hagengebirge, Göllstock, Tennengebirge, Gosaukamm, Chiemgauer Alpen, Heutal, Reiteralpe, Loferer und Leoganger Steinberge, Kitzbüheler Alpen, Glemmtal, Oberpinzgauer Grasberge, Goldberggruppe Nord, Pongauer Grasberge, Niedere Tauern Nord, Niedere Tauern Alpenhauptkamm, Niedere Tauern Süd, Ankogelgruppe, Muhr, Goldberggruppe Alpenhauptkamm, Glocknergruppe Nord, Großvenedigergruppe Nord, Großvenedigergruppe Alpenhauptkamm, Glocknergruppe Alpenhauptkamm, Dientner Grasberge



Avalanche problems



Danger ratings

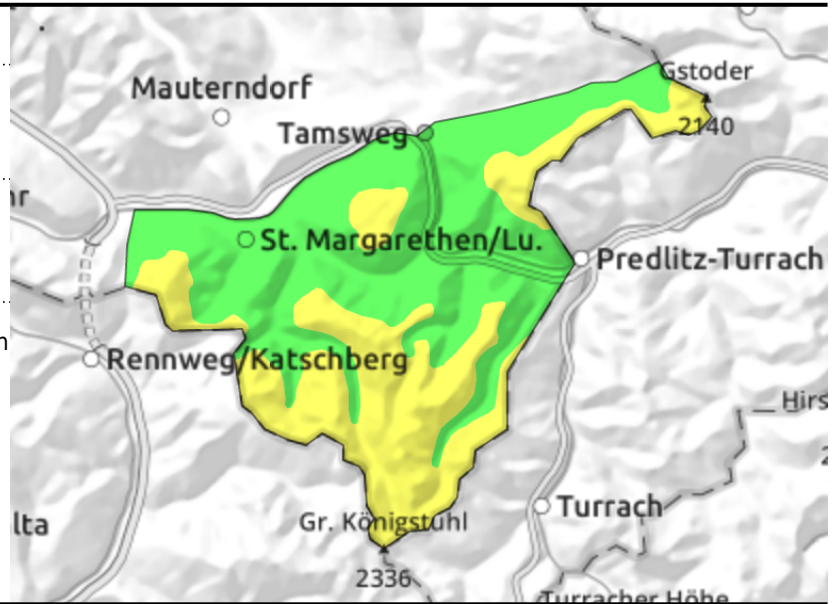
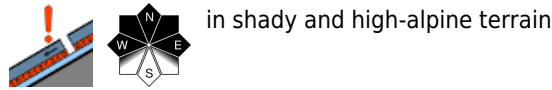
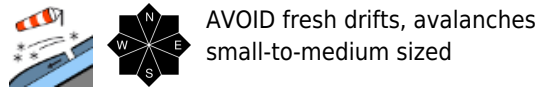


Expositions



01.02.2022

Nockberge



Storm winds plus fresh snowdrifts

Avalanche danger is predominantly MODERATE, but rapidly increases with the new snowfall. Danger zones occur wherever fresh snowdrift accumulations are deposited in steep terrain. They are triggerable by large additional loading, in isolated cases by minimum additional loading. Caution urged in very steep terrain, gullies, bowls, behind protruberances. Potential slabs can be medium-sized.

Snowpack structure

Fresh snow (10-20 cm) and storm winds will generate new drifts, deposit them atop thin, hardened crusts. Beneath the crusts and the old snowdrift accumulations are weak layers of faceted crystals (granular snow).

Weather

On **Tuesday**, stormy northerly winds (60-80 km/hr) and snow showers. Some clouds will disperse in between. At 2000 m: -9 degrees.

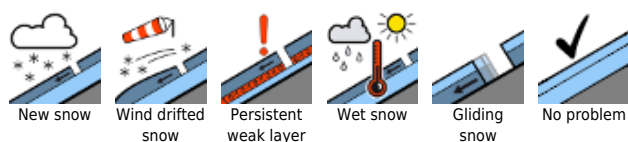
On Tuesday night and during the day on **Wednesday**, intermittent snowfall. Some cloud dispersal. At 2000 m: -6 degrees. Storm winds at 80 km/hr.

Fresh snow by Wednesday evening: 15-30 cm. Further east, less. Further west, more.

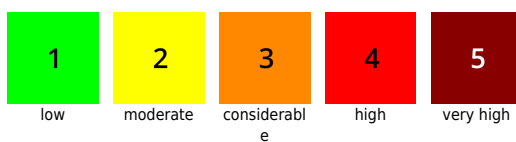
Outlook

Snowdrift accumulations atop a weak old snowpack.

Avalanche problems



Danger ratings

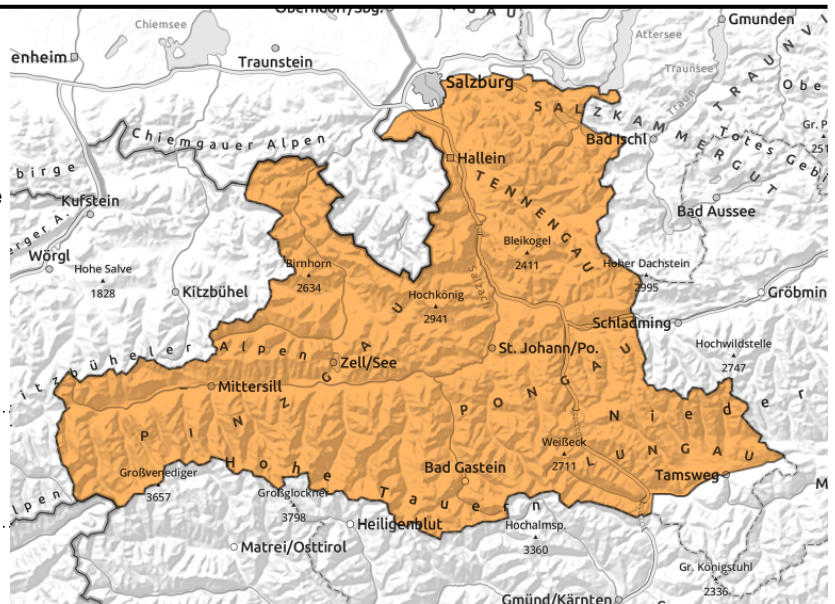


Expositions



01.02.2022

Osterhorngruppe, Gamsfeldgruppe, Untersbergstock, Steinernes Meer, Hochkönig, Hagengebirge, Göllstock, Tennengebirge, Gosaukamm, Chiemgauer Alpen, Heutal, Reiteralpe, Loferer und Leoganger Steinberge, Kitzbüheler Alpen, Glemmtal, Oberpinzgauer Grasberge, Goldberggruppe Nord, Pongauer Grasberge, Niedere Tauern Nord, Niedere Tauern Alpenhauptkamm, Niedere Tauern Süd, Ankogelgruppe, Muhr, Goldberggruppe Alpenhauptkamm, Glocknergruppe Nord, Großvenedigergruppe Nord, Großvenedigergruppe Alpenhauptkamm, Glocknergruppe Alpenhauptkamm, Dientner Grasberge



40-50 cm fresh snow widespread, more in some places



easily triggerable, widespread, above the treeline

Treacherous - considerable new-snow and snowdrift problem

After the intense snowfall, avalanche danger is **CONSIDERABLE** from the start. Both below the treeline and above it. In the areas where snowfall was heaviest the danger lies in the upper rungs of the danger level.

Above forest rims, medium-to-large sized slab avalanches can be easily triggered. In steep terrain, even the weight of one sole skier/boarder is sufficient, particularly in N/E/SW aspects.

In extremely steep terrain where snowfall has been heavy, naturally triggered avalanches can release. This can occur in all aspects. Below the treeline,

Snowpack structure

On Tuesday over a short span of time, 40-60 cm of fresh snow will fall widespread, more in the northern barrier cloud regions. With the wind, snow transport will be massive. The snowdrift accumulations will fracture most probably at the borderline to the old snowpack or just above it. More deeply embedded weak layers (beneath the hardened snowdrift masses from the weekend or around the upper crusts of the old snowpack from December) will probably not be relevant on Tuesday.

Weather

On **Tuesday**, stormy northerly winds (60-80 km/hr) and snow showers. Some clouds will disperse in between. At 2000 m: -9 degrees, at 3000 m -17 degrees.

On Tuesday night and during the day on **Wednesday**, intermittent snowfall. Some cloud dispersal. At 2000 m: -6 degrees, at 3000 m, -14 degrees.

Fresh snow by Wednesday evening: 15-30 cm. Further east, less. Further west, more.

Outlook

Snowdrift accumulations atop a weak old snowpack. Treacherous due to amounts of new snow. **Danger Level can rise to HIGH (4).**

Avalanche problems



New snow



Wind drifted snow



Persistent weak layer



Wet snow



Gliding snow



No problem

Danger ratings



1

low



2

moderate



3

considerable



4

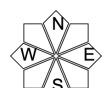
high



5

very high

Expositions



01.02.2022

Translated by Jeffrey McCabe, www.creativtrans.com

Avalanche problems



New snow



Wind drifted
snow



Persistent
weak layer



Wet snow



Gliding
snow



No problem

Danger ratings



1

low



2

moderate



3

considerabl
e



4

high



5

very high

Expositions

