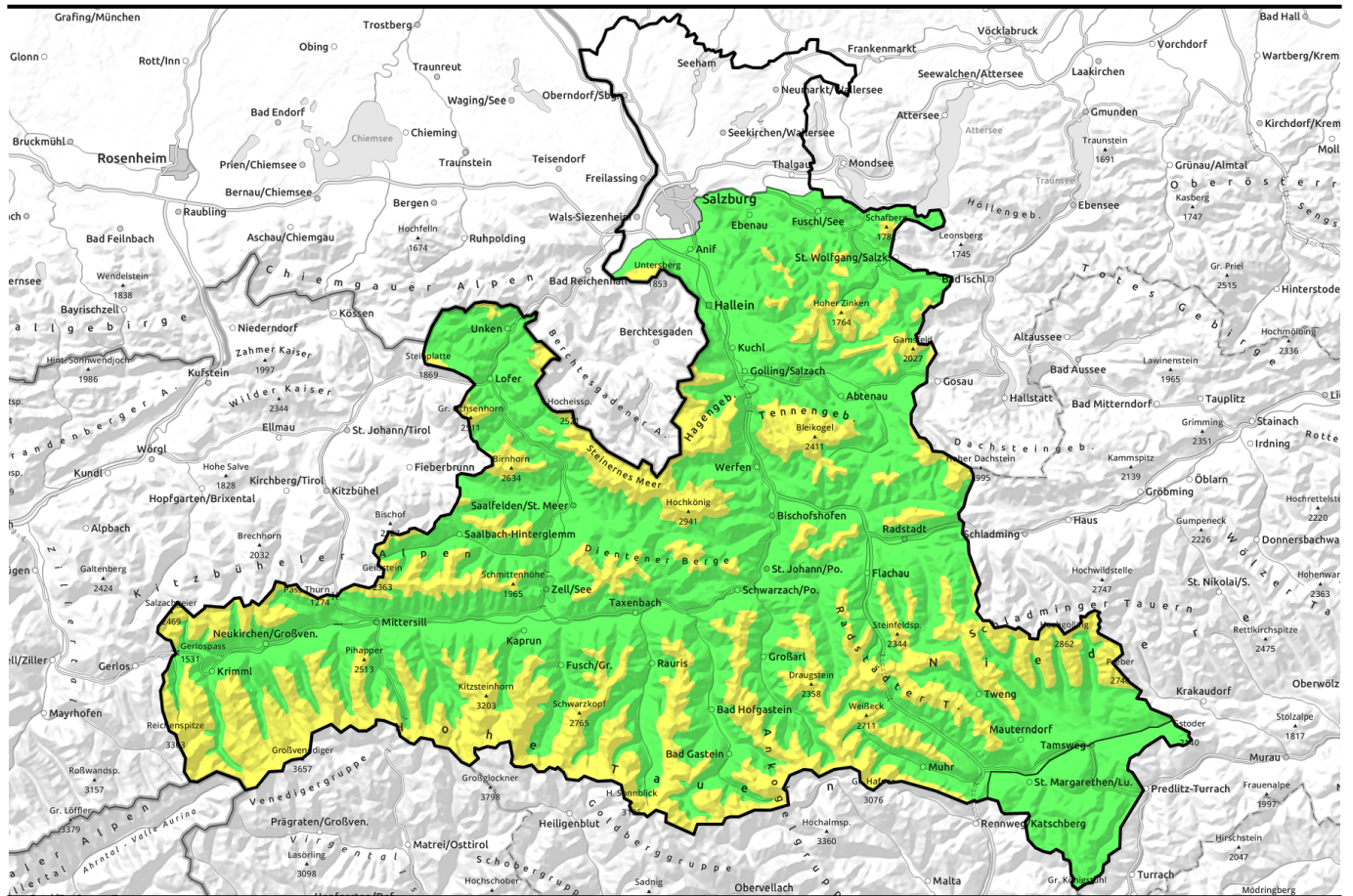


31.01.2022



Moderate snowdrift problem during day, swift increase in evening

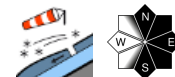


Nockberge

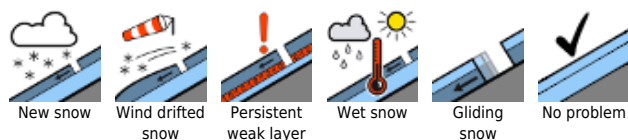


forestline

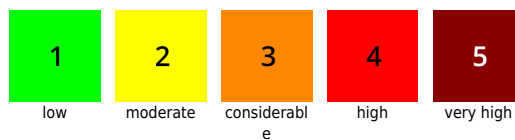
Osterhorngruppe, Gamsfeldgruppe, Untersbergstock, Steinernes Meer, Hochkönig, Hagengebirge, Göllstock, Tennengebirge, Gosaukamm, Chiemgauer Alpen, Heutal, Reiteralpe, Kitzbüheler Alpen, Glemmtal, Pongauer Grasberge, Großvenedigergruppe Nord, Glocknergruppe Nord, Goldberggruppe Nord, Niedere Tauern Nord, Niedere Tauern Alpenhauptkamm, Niedere Tauern Süd, Ankogelgruppe, Muhr, Goldberggruppe Alpenhauptkamm, Glocknergruppe Alpenhauptkamm, Großvenedigergruppe Alpenhauptkamm, Oberpinzgauer Grasberge, Dientner Grasberge, Loferer und Leoganger Steinberge



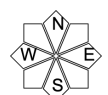
Avalanche problems



Danger ratings



Expositions

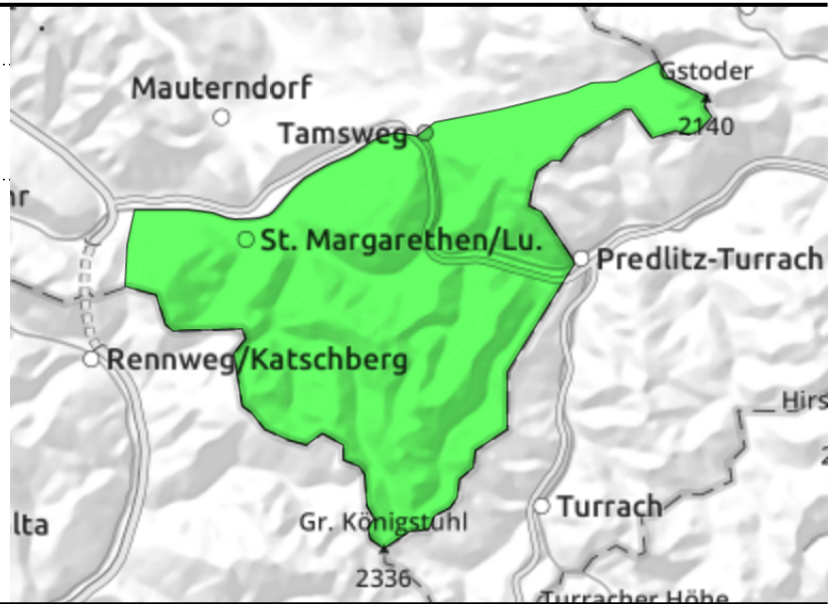


31.01.2022

Nockberge



protruberances distant from ridges, gullies, bowls



Caution in gullies and on lee slopes

Avalanche danger is **predominantly LOW**.

Danger zones are few. The snowdrift masses of recent days are not easily triggered. With large additional loading in very steep gullies, bowls and behind protruberances, isolated mostly small slabs can be triggered.

Snowpack structure

The combination of gale-strength winds and relatively mild temperatures on Sunday has left behind its marks. The terrain is utterly windblown, often the old snowpack has been laid free. The small amount of snow on the ground has hardened crusts widespread, beneath which are hardened snowdrift masses and widespread weak layers of faceted crystals (granular snow).

Weather

On **Monday**, dry and initially sunny. In the afternoon, overcast skies. First snow showers in the evening. Stormy winds (60-80 km/hr). Temperature at 2000 m: around -6 degrees.

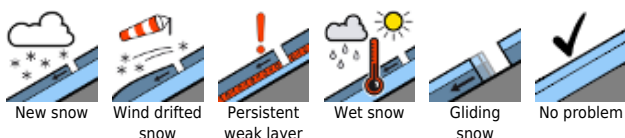
On Monday night, moderate to heavy snowfall with lots of wind impact, persisting throughout the day on Tuesday. In 24 hours, until Tuesday evening, up to 20 cm of fresh snow is expected.

Outlook: on Wednesday, heavy storm winds and snow showers from the north, winds up to 100 km/hr.

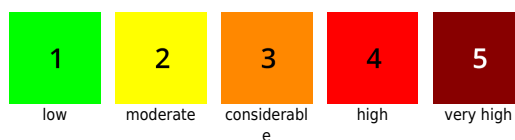
Outlook

Significant and swift increase in avalanche danger on Tuesday. Fresh snow/snowdrifts deposited atop a weak old snowpack.

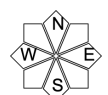
Avalanche problems



Danger ratings

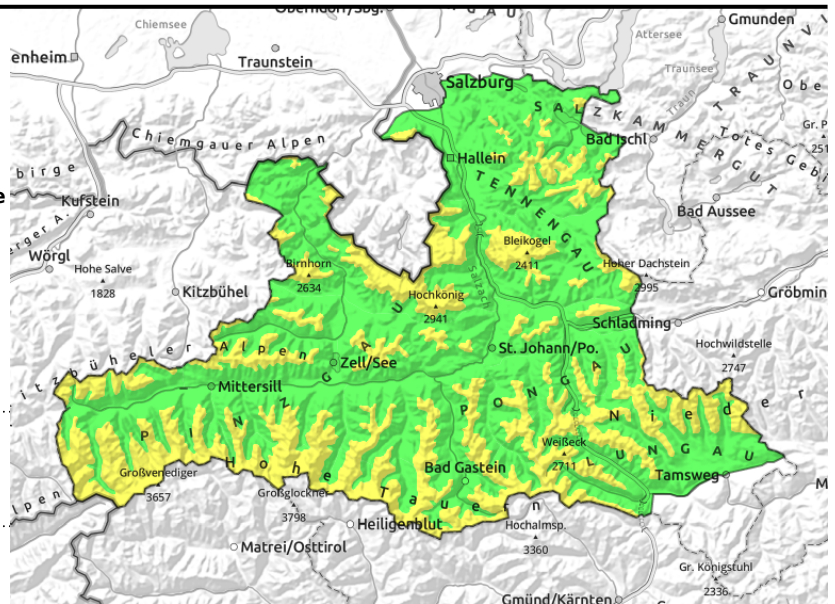


Expositions



31.01.2022

Osterhorngruppe, Gamsfeldgruppe, Untersbergstock, Steinernes Meer, Hochkönig, Hagengebirge, Göllstock, Tennengebirge, Gosaukamm, Chiemgauer Alpen, Heutal, Reiteralpe, Kitzbüheler Alpen, Glemmtal, Pongauer Grasberge, Großvenedigergruppe Nord, Glocknergruppe Nord, Goldberggruppe Nord, Niedere Tauern Nord, Niedere Tauern Alpenhauptkamm, Niedere Tauern Süd, Ankogelgruppe, Muhr, Goldberggruppe Alpenhauptkamm, Glocknergruppe Alpenhauptkamm, Großvenedigergruppe Alpenhauptkamm, Oberpinzgauer Grasberge, Dientner Grasberge, Loferer und Leoganger Steinberge



forestline



compact-to-hard snowdrifts,
large additional loading
outlying terrain utterly
windblown

Daytime situation strikingly marked by recent storm winds

The snowdrift danger above the treeline is MODERATE, below that altitude danger is LOW.

Danger zones where **large additional loading can trigger the compact-to-hard snowdrift masses** are found in gullies, bowls, behind protruberances. The further up you go, the easier a slab can be triggered. Potential avalanches are small, in the Tauern and on Hochkönig/Tennengebirge medium-sized.

Due to storm winds, conditions in outlying terrain are starkly varied over smallest spaces.

Due to fresh snow the situation will rapidly change in the evening. **Avalanche danger on Monday night will rise significantly** (snowdrifts and fresh snow atop hardened wind-impacted surfaces).

Snowpack structure

The combination of gale-strength winds and relatively mild temperatures on Sunday has left behind its marks. The terrain is utterly windblown, often the old snowpack has been laid free. Soft layers beneath the snowdrifts and weak intermediate layers (around the crusts inside the snowpack) will not be endangered on Monday, i.e. require larger additional loading.

Weather

On **Monday**, initially dry. Clouds will become denser, light snowfall is possible in the afternoon.

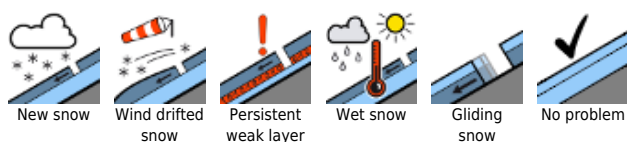
Temperatures will rise, then fall. In the afternoon stormy winds (60-80 km/hr) will rise. In the evening and during the night, heavy snowfall with lots of wind which will persist throughout the day on Tuesday. In the northern barrier cloud regions, highly intensive snowfall is expected. In 24 hours, until Tuesday evening, up to 50 cm of fresh snow is expected. At 2000 m: -8 degrees; at 3000 m: -13 degrees.

Outlook: more snowfall on Wednesday, though not as much. All in all, by Thursday morning up to 80-100 cm of fresh snow. On Thursday, higher temperatures and quieter.

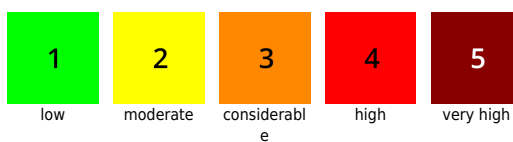
Outlook

Significant and swift increase in avalanche danger on Tuesday evening and, most of all, on

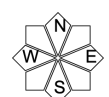
Avalanche problems



Danger ratings



Expositions

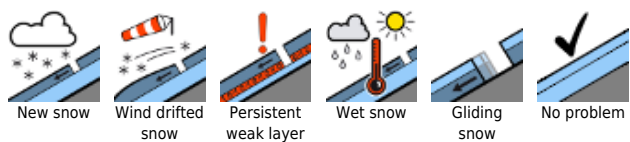


31.01.2022

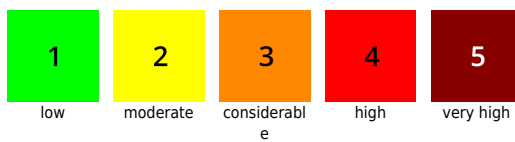
Wednesday. Due to the fresh snow, conditions will be treacherous.

Translated by Jeffrey McCabe, www.creativtrans.com

Avalanche problems



Danger ratings



Expositions

