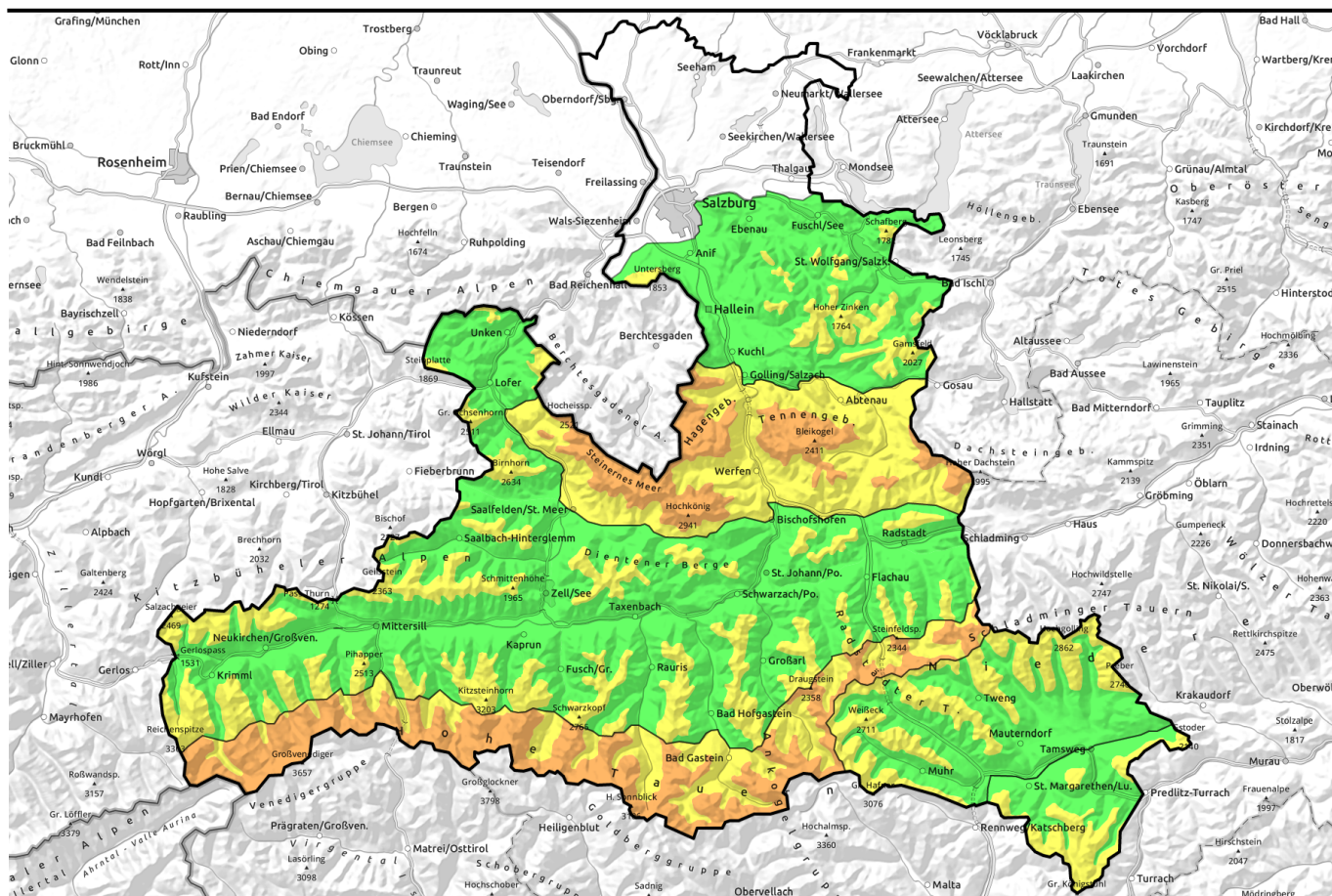


30.01.2022



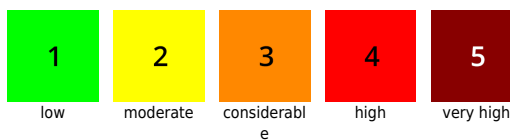
Heavy storm winds, minor snowfall, stark differences over small spaces

	<p>2100 m Steinernes Meer, Hochkönig, Hagengebirge, Göllstock, Tennengebirge, Gosaukamm, Niedere Tauern Alpenhauptkamm, Goldberggruppe Alpenhauptkamm, Großvenedigergruppe Alpenhauptkamm, Glocknergruppe Alpenhauptkamm</p>	
	<p>forestline Osterhorngruppe, Gamsfeldgruppe, Untersbergstock, Chiemgauer Alpen, Heutal, Reiteralpe, Kitzbüheler Alpen, Glemmtal, Großvenedigergruppe Nord, Glocknergruppe Nord, Dientner Grasberge, Pongauer Grasberge, Niedere Tauern Nord, Goldberggruppe Nord, Oberpinzgauer Grasberge, Loferer und Leoganger Steinberge</p>	
	<p>1600 m Niedere Tauern Süd, Ankogelgruppe, Muhr</p>	
	<p>1800 m Nockberge</p>	

Avalanche problems



Danger ratings

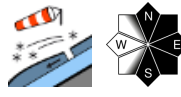


Expositions

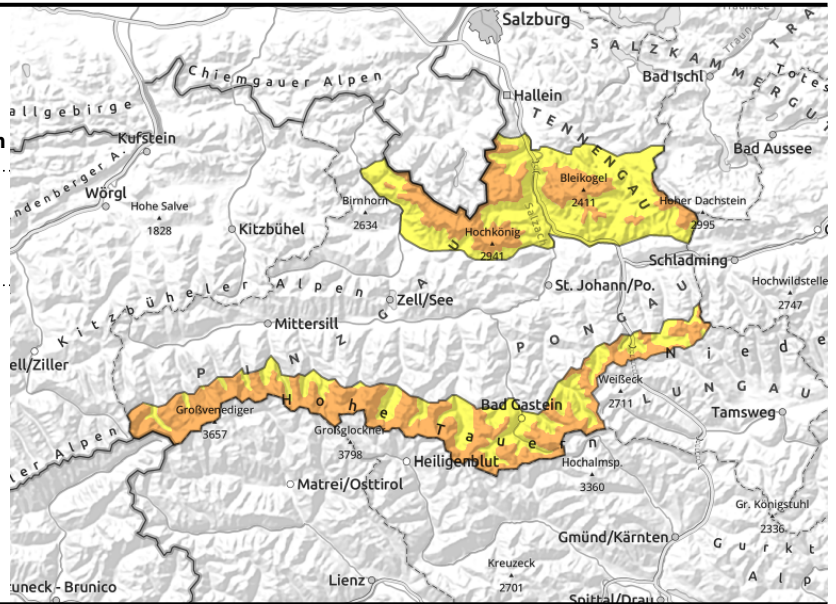


30.01.2022

Steinernes Meer, Hochkönig, Hagengebirge, Göllstock, Tennengebirge, Gosaukamm, Niedere Tauern Alpenhauptkamm, Goldberggruppe Alpenhauptkamm, Großvenedigergruppe Alpenhauptkamm, Glocknergruppe Alpenhauptkamm

distant from ridges, gullies, behind protruberances, forest zones



Storm wind + fresh snowdrifts

The snowdrift danger above 2100 m is CONSIDERABLE, below that altitude down to the forest rims danger is MODERATE. Storm winds vary hugely over smallest spaces. Danger zones of fresh snowdrift accumulations are frequent between forest rims and terrain distant from ridgelines. Gullies, bowls and protruberances are the potential hot spots. Further up the terrain is windblown. Fresh snowdrifts can be increasingly easily triggered by one person with ascending altitude in steep terrain. Avalanches can grow to medium size.

Snowpack structure

The latest fresh snow from Friday (20-30 cm) is being transformed to drifts by storm winds, increasingly prone to triggering with ascending altitude. Exposed terrain is windblown, wind-pressed or melt-freeze encrusted. The new snowdrift accumulations lie deposited atop encrusted surfaces or old powder which is a potential weak layer. More deeply embedded layers in the snowpack (around the upper crust of the old snowpack) are currently not avalanche-relevant.

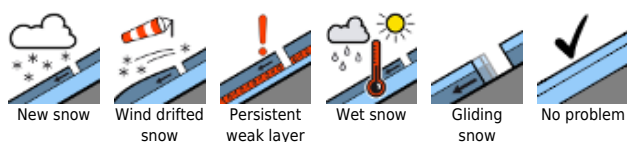
Weather

Sunday will bring heavy storm winds. In exposed zones, gale-strength gusts (80-100 km/hr), on Saturday night intermittent snowfall (5-10 cm, heavily windblown). In the afternoon on Sunday, clouds will disperse, temperatures drop. At 2000 m: -8 degrees and dropping; at 3000 m: -10 degrees. On Monday, snowfall will set in during the course of the day. In the northern barrier cloud regions, intensively (15-35 cm in 24 hours), accompanied by storm-strength NW winds. At 2000 m: -8 degrees; at 3000 m: -13 degrees.

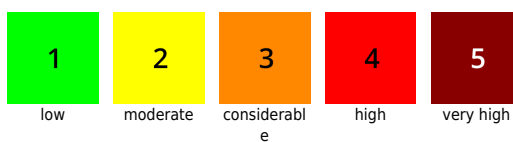
Outlook

Increasing avalanche danger due to abundant fresh snow between Monday and Wednesday

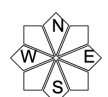
Avalanche problems



Danger ratings

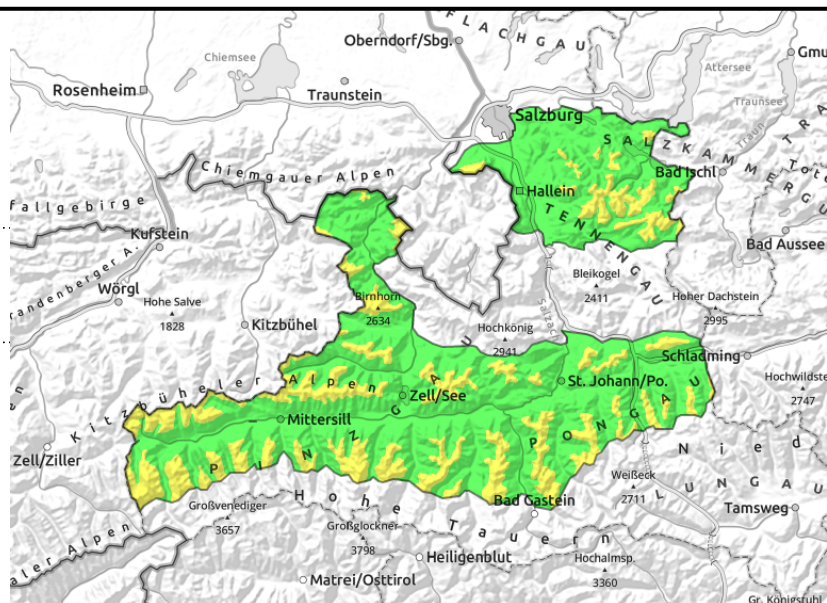
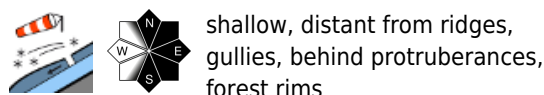


Expositions



30.01.2022

Osterhorngruppe, Gamsfeldgruppe, Untersbergstock, Chiemgauer Alpen, Heutal, Reiteralpe, Kitzbüheler Alpen, Glemmtal, Großvenedigergruppe Nord, Glocknergruppe Nord, Dientner Grasberge, Pongauer Grasberge, Niedere Tauern Nord, Goldberggruppe Nord, Oberpinzgauer Grasberge, Loferer und Leoganger Steinberge



Storm winds and small snowdrift accumulations

Snowdrift danger above the treeline is MODERATE, below that altitude danger is LOW, but storm winds vary hugely over smallest spaces.

Danger zones of fresh snowdrift accumulations are frequent between forest rims and terrain distant from ridgelines. Gullies, bowls and protruberances are the potential hot spots. Further up the terrain is windblown. Avalanches are generally small-sized.

Snowpack structure

The latest fresh snow from Friday (20 cm) is being transformed to drifts by storm winds, increasingly prone to triggering with ascending altitude. Exposed terrain is windblown, wind-pressed or melt-freeze encrusted. The new snowdrift accumulations lie deposited atop encrusted surfaces or old powder which is a potential weak layer. More deeply embedded layers in the snowpack (around the upper crust of the old snowpack) are currently not avalanche-relevant.

Weather

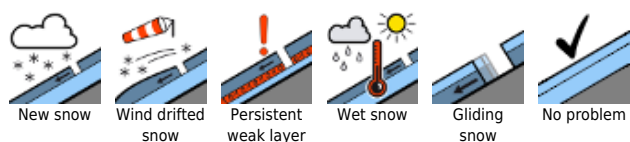
Sunday will bring heavy storm winds. In exposed zones, gale-strength gusts (80-100 km/hr), on Saturday night intermittent snowfall (5-10 cm, heavily windblown). In the afternoon on Sunday, clouds will disperse, temperatures drop. At 2000 m: -8 degrees and dropping.

On Monday, snowfall will set in during the course of the day. In the northern barrier cloud regions, intensively (15-35 cm in 24 hours), accompanied by storm-strength NW winds. At 2000 m: -8 degrees.

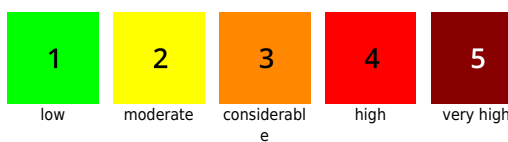
Outlook

Increasing avalanche danger due to abundant fresh snow between Monday and Wednesday

Avalanche problems



Danger ratings



Expositions



30.01.2022

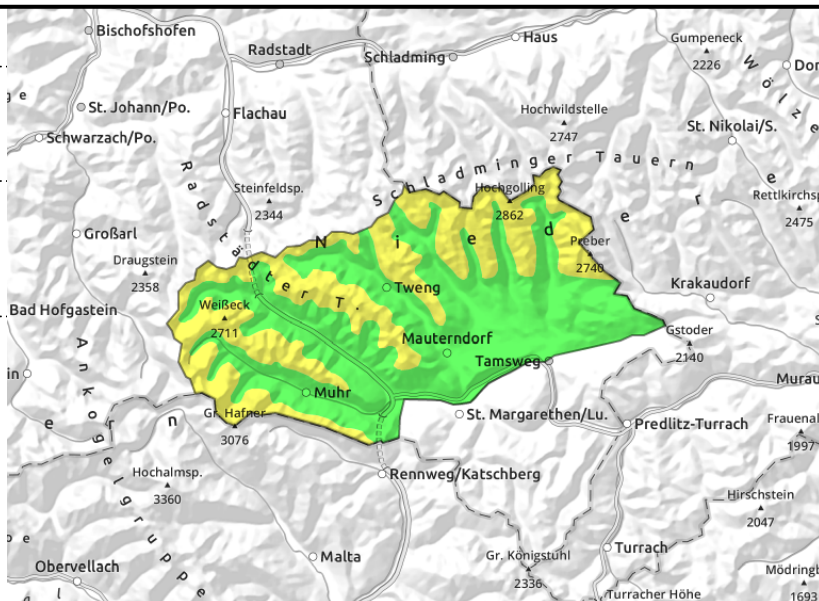
Niedere Tauern Süd, Ankogelgruppe, Muhr



shallow, distant from ridges, gullies, behind protruberances, forest rims



in zones with shallow snow



Storm winds and small snowdrift accumulations

Snowdrift danger above 1600 m is MODERATE, below that altitude danger is LOW, but storm winds vary hugely over smallest spaces.

Danger zones of fresh snowdrift accumulations are frequent between forest rims and terrain distant from ridgelines. Gullies, bowls and protruberances are the potential hot spots. Further up the terrain is windblown. Avalanches are generally small-sized.

Further towards the Tauern the drifts are larger. Towards the south, winds do not transport as much.

Snowpack structure

Exposed terrain is windblown, wind-pressed or melt-freeze encrusted. The new snowdrift accumulations lie deposited atop encrusted surfaces or old powder which is a potential weak layer. Below that there is old snow on north-facing slopes and in shallow-snow zones which is riddled with faceted crystals (granular snow).

Weather

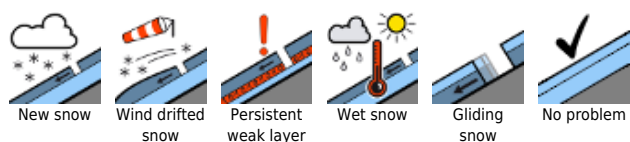
Sunday will bring heavy storm winds. In exposed zones, gale-strength gusts (80-100 km/hr), on Saturday night intermittent snowfall (5-10 cm, heavily windblown). In the afternoon on Sunday, clouds will disperse, temperatures drop. At 2000 m: -8 degrees and dropping.

On Monday, snowfall will set in during the course of the day. In the northern barrier cloud regions, intensively (15-35 cm in 24 hours), accompanied by storm-strength NW winds. At 2000 m: -8 degrees.

Outlook

Increasing avalanche danger due to abundant fresh snow between Monday and Wednesday

Avalanche problems



Danger ratings

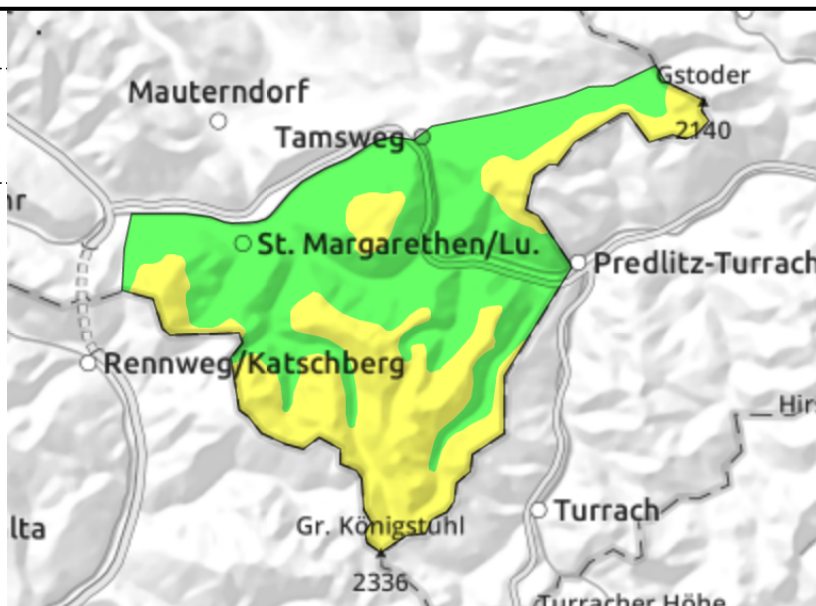
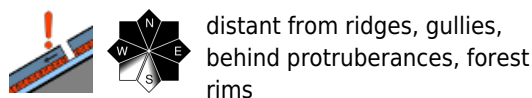


Expositions



30.01.2022

Nockberge



Caution urged in bowls and on lee slopes

Snowdrift danger above the treeline is MODERATE, below that altitude danger is LOW. Danger zones occur where fresh or older (hardened) snowdrifts lie deposited, i.e. in bowls, steep gullies, and in steep forest lanes, partly also in sparsely wooded zones. A medium-sized slab avalanche can be triggered mostly by large additional loading.

Snowpack structure

Storm winds continue to determine the snow and the situation. The surfaces are hardened or there is fresh snow on top of older drifts. Below this, particularly in northern aspects, are weak layers of faceted crystals (granular snow).

Weather

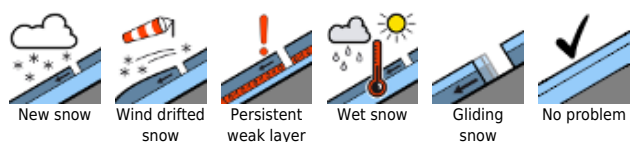
Sunday will bring heavy storm winds. In exposed zones, gale-strength gusts (100 km/hr) clouds will disperse, temperatures drop. At 2000 m: -8 degrees and dropping. On Monday, stormy winds without precipitation. Intermittent sunshine. At 2000 m: -8 degrees.

Outlook

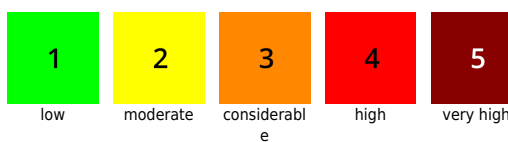
Little change. Storm winds will dominate the early part of the week.

Translated by Jeffrey McCabe, www.creativtrans.com

Avalanche problems



Danger ratings



Expositions

