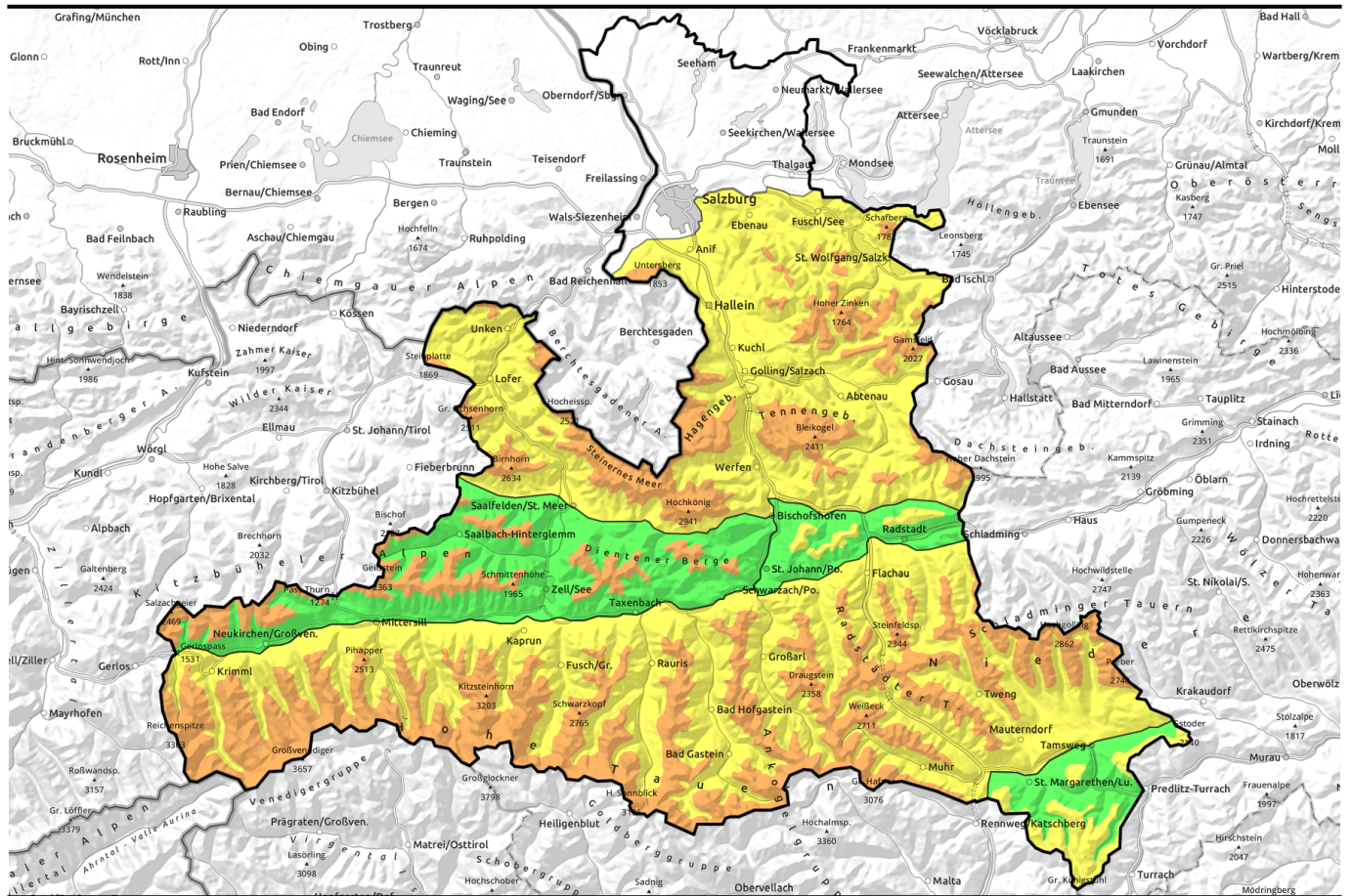


**29.01.2022**



## Fresh snowdrift masses are often easily triggered

|  |            |                                                                                                                                                                                                                                                                                                                                                                                                                                                                            |  |  |
|--|------------|----------------------------------------------------------------------------------------------------------------------------------------------------------------------------------------------------------------------------------------------------------------------------------------------------------------------------------------------------------------------------------------------------------------------------------------------------------------------------|--|--|
|  | 1800 m     | Nockberge                                                                                                                                                                                                                                                                                                                                                                                                                                                                  |  |  |
|  | forestline | Osterhorngruppe, Gamsfeldgruppe, Untersbergstock, Steinernes Meer, Hochkönig, Hagengebirge, Göllstock, Chiemgauer Alpen, Heutal, Reiteralpe, Loferer and Leoganger Steinberge, Tennengebirge, Gosaukamm, Niedere Tauern Nord, Niedere Tauern Alpenhauptkamm, Niedere Tauern Süd, Goldberggruppe Nord, Goldberggruppe Alpenhauptkamm, Glocknergruppe Nord, Großvenedigergruppe Nord, Großvenedigergruppe Alpenhauptkamm, Glocknergruppe Alpenhauptkamm, Ankogelgruppe, Muhr |  |  |
|  | forestline | Kitzbüheler Alpen, Glemmtal, Oberpinzgauer Grasberge, Dientner Grasberge                                                                                                                                                                                                                                                                                                                                                                                                   |  |  |
|  | forestline | Pongauer Grasberge                                                                                                                                                                                                                                                                                                                                                                                                                                                         |  |  |

### Avalanche problems



### Danger ratings



### Expositions



**29.01.2022**

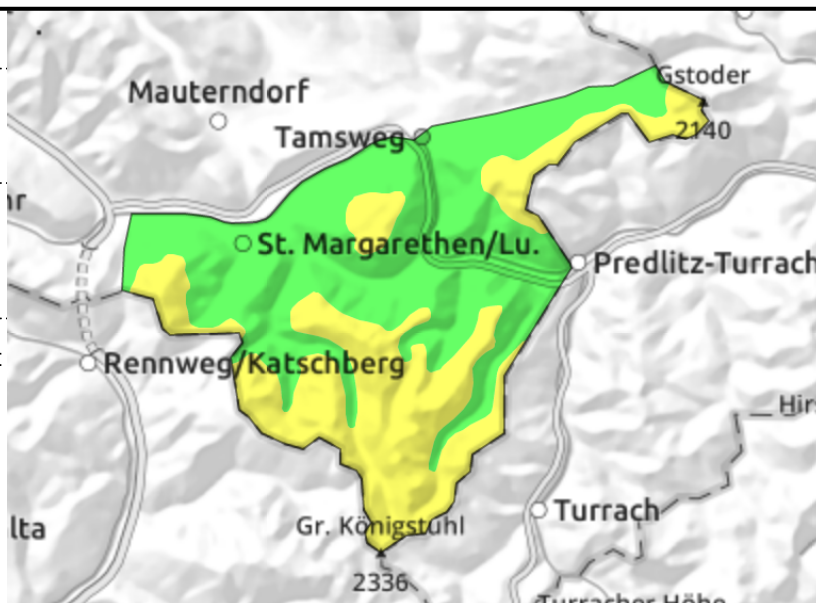
**Nockberge**



distant from ridgelines, behind protruberances, gullies, steep bowls, forest clearances



extended northern aspects, not easily triggered



**Caution in steep wind-loaded zones**

Avalanche danger above the treeline is MODERATE, below that altitude danger is LOW. Danger zones occur wherever fresh or older (hardened) snowdrifts lie deposited. This is the case in all bowls and steep gullies, and also in steep forest lanes and some forest clearances. There, particularly by large additional loading, a medium-sized slab avalanche can be triggered.

**Snowpack structure**

The stormy winds are forming the snow and the overall situation. Surfaces are hard or encrusted, fresh snow lies in wind-protected terrain, beneath it lie older drifts. Beneath those, particularly in northern aspects, are weak faceted layers of old snow (loose-granular).

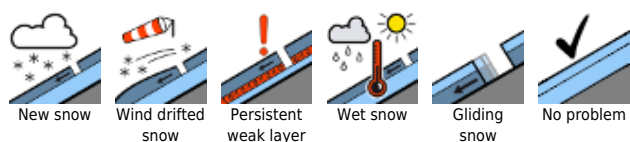
**Weather**

On **Saturday** most peaks will be free, dense clouds above that altitude. Pale sunshine, NW winds at 40-60 km/hr in exposed terrain. Slightly higher temperatures: at 2000 m -4 degrees.  
 On **Sunday**, storm! In exposed terrain, gale-strength gusts are possible. On Saturday night and during the day on Sunday, light snowfall (up to 5 cm) which will get utterly windblown. Colder. At 2000 m: -8 degrees, and dropping further.

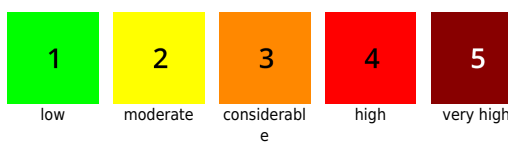
**Outlook**

Little change.

**Avalanche problems**




**Danger ratings**

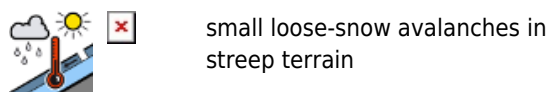
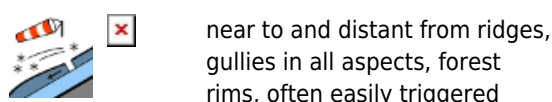


**Expositions**



**29.01.2022**

Osterhorngruppe, Gamsfeldgruppe,  Untersbergstock, Steinernes Meer, Hochkönig, Hagengebirge, Göllstock, Chiemgauer Alpen, Heutal, Reiteralpe, Loferer und Leoganger Steinberge, Tennengebirge, Gosaukamm, Niedere Tauern Nord, Niedere Tauern Alpenhauptkamm, Niedere Tauern Süd, Goldberggruppe Nord, Goldberggruppe Alpenhauptkamm, Glocknergruppe Nord, Großvenedigergruppe Nord, Großvenedigergruppe Alpenhauptkamm, Glocknergruppe Alpenhauptkamm, Ankogelgruppe, Muhr



## AVOID steep wind-loaded zones

Danger from snowdrifts above the treeline is CONSIDERABLE, just below the treeline danger is MODERATE.

Danger zones occur near to and distant from ridgelines, in steep forest lanes, and clearances in sparsely wooded zones. This includes gullies in all aspects but particularly in NW/E/S aspects. To trigger a medium-sized slab avalanche, only the weight of one sole person is necessary.

In extremely steep terrain, small loose-snow avalanches are possible.

### Snowpack structure

As a result of storm winds on Friday, about 25 cm of fresh snow was registered, more in some places. Exposed terrain is windblown, wind-pressed or melt-freeze encrusted (often big wind swirls in high alpine terrain). The drifts often lie deposited atop older drifts (E/S aspects, gullies) or atop older loose old snow (in wind-protected terrain). Potential fracture points on Saturday: mostly inside the latest masses of fresh snow, less often around the uppermost crust of the old snowpack.

### Weather

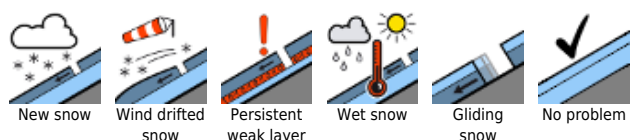
On **Saturday** most peaks will be free, dense clouds above that altitude. Pale sunshine, NW winds at 40-60 km/hr in exposed terrain. Slightly higher temperatures: at 2000 m -4 degrees, at 3000 m: -5 degrees.

On **Sunday**, storm! In exposed terrain, gale-strength gusts are possible. On Saturday night and during the day on Sunday, light snowfall (up to 5 cm) which will get utterly windblown. Colder. At 2000 m: -8 degrees, and dropping further, at 3000 m: -10 degrees.

### Outlook

Initially little change. Storm winds and fresh snowdrift accumulations will make the day on Sunday. Rising avalanche danger from Monday to Wednesday, due to abundant fresh snow.

#### Avalanche problems



#### Danger ratings

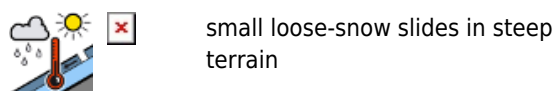
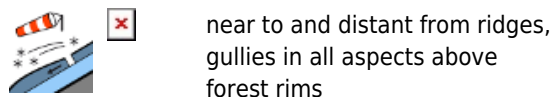


#### Expositions



# 29.01.2022

**Kitzbüheler Alpen, Glemmtal, Oberpinzgauer  
Grasberge, Dientner Grasberge** ✘



## AVOID wind-loaded slopes

Danger from snowdrifts above the treeline is **CONSIDERABLE**, just below the treeline danger is **MODERATE**.

Danger zones occur near to and distant from ridgelines, in steep forest lanes, and clearances in sparsely wooded zones. This includes gullies in all aspects but particularly in NW/E/S aspects. To trigger a medium-sized slab avalanche, only the weight of one sole person is necessary. In extremely steep terrain, small loose-snow avalanches are possible.

### Snowpack structure

As a result of storm winds on Friday, about 25 cm of fresh snow was registered, more in some places. Exposed terrain is windblown, wind-pressed or melt-freeze encrusted (often big wind swirls in high alpine terrain). The drifts often lie deposited atop older drifts (E/S aspects, gullies) or atop older loose old snow (in wind-protected terrain). Potential fracture points on Saturday: mostly inside the latest masses of fresh snow, less often around the uppermost crust of the old snowpack.

### Weather

On **Saturday** most peaks will be free, dense clouds above that altitude. Pale sunshine, NW winds at 40-60 km/hr in exposed terrain. Slightly higher temperatures: at 2000 m -4 degrees.

On **Sunday**, storm! In exposed terrain, gale-strength gusts are possible. On Saturday night and during the day on Sunday, light snowfall (up to 5 cm) which will get utterly windblown. Colder. At 2000 m: -8 degrees, and dropping further.

### Outlook

Initially little change. Storm winds and fresh snowdrift accumulations will make the day on Sunday. Rising avalanche danger from Monday to Wednesday, due to abundant fresh snow.

#### Avalanche problems



#### Danger ratings



#### Expositions



**29.01.2022**

Pongauer Grasberge 



forestline



small snowdrift masses

## Caution in outlying terrain

Danger from snowdrifts is MODERATE above the treeline, below that altitude danger is LOW. Danger zones occur above the treeline in gullies in all aspects (particularly NW/E/S). Triggering a generally small slab avalanche is possible from the weight of one sole person.

## Snowpack structure

Due to storm on Friday, 15-20 cm of fresh snow was registered. The drifts lie deposited on older snowdrifts or atop older loose snow. Potential fracture poits on Saturday: mostly inside the latest masses of fresh snow and around the uppermost crust of the old snowpack.

## Weather

On **Saturday** most peaks will be free, dense clouds above that altitude. Pale sunshine, NW winds at 40-60 km/hr in exposed terrain. Slightly higher temperatures: at 2000 m -4 degrees.

On **Sunday**, storm! In exposed terrain, gale-strength gusts are possible. On Saturday night and during the day on Sunday, light snowfall (up to 5 cm) which will get utterly windblown. Colder. At 2000 m: -8 degrees, and dropping further.

## Outlook

Initially little change. Storm winds and fresh snowdrift accumulations will make the day on Sunday. Rising avalanche danger from Monday to Wednesday, due to abundant fresh snow.

Translated by Jeffrey McCabe, [www.creativtrans.com](http://www.creativtrans.com)

### Avalanche problems



New snow



Wind drifted snow



Persistent weak layer



Wet snow



Gliding snow



No problem

### Danger ratings



1

low



2

moderate



3

considerabl  
e



4

high



5

very high

### Expositions

