

## Moderate snowdrift problem, not easily recognized



forestline

Osterhorngruppe, Gamsfeldgruppe, Untersbergstock, Chiemgauer Alpen, Heutal, Reiteralpe, Kitzbüheler Alpen, Glemmtal, Oberpinzgauer Grasberge, Dientner Grasberge, Pongauer Grasberge, Niedere Tauern Nord, Goldberggruppe Nord, Goldberggruppe Alpenhauptkamm, Tennengebirge, Gosaukamm, Steinernes Meer, Hochkönig, Hagengebirge, Göllstock, Loferer und Leoganger Steinberge, Glocknergruppe Nord, Glocknergruppe Alpenhauptkamm, Großvenedigergruppe Nord, Großvenedigergruppe Alpenhauptkamm, Niedere Tauern Alpenhauptkamm, Niedere Tauern Süd, Ankogelgruppe, Muhr

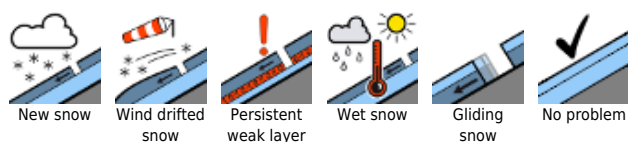


forestline

Nockberge



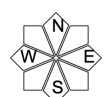
### Avalanche problems



### Danger ratings

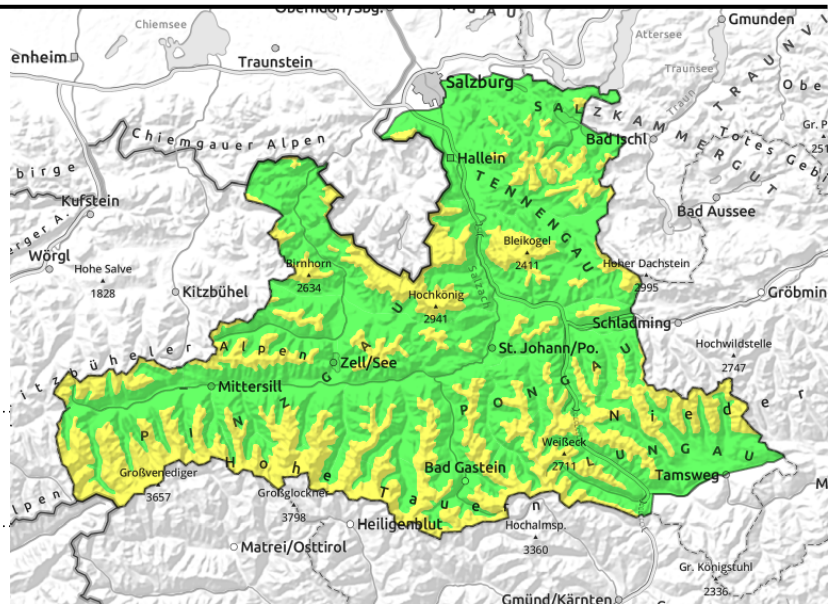


### Expositions



**26.01.2022**

Osterhorngruppe, Gamsfeldgruppe, Untersbergstock, Chiemgauer Alpen, Heutal, Reiteralpe, Kitzbüheler Alpen, Glemmtal, Oberpinzgauer Grasberge, Dientner Grasberge, Pongauer Grasberge, Niedere Tauern Nord, Goldberggruppe Nord, Goldberggruppe Alpenhauptkamm, Tennengebirge, Gosaukamm, Steinernes Meer, Hochkönig, Hagengebirge, Göllstock, Loferer und Leoganger Steinberge, Glocknergruppe Nord, Glocknergruppe Alpenhauptkamm, Großvenedigergruppe Nord, Großvenedigergruppe Alpenhauptkamm, Niedere Tauern Alpenhauptkamm, Niedere Tauern Süd, Ankogelgruppe, Muhr



forestline



triggerable at edges of drifted masses

## Heed fresh and older snowdrift accumulations

Avalanche danger above 1500 m is MODERATE (upper end), below that altitude danger is LOW. Caution on very steep slopes, particularly in N/E aspects, ordinarily by large additional loading, in isolated cases also less, especially when the terrain is very steep. Mostly small-to-medium sized avalanches.

On sunny, steep rocky slopes small loose-snow avalanches can trigger.

## Snowpack structure

The snowpack was able to settle over the last couple of days. Weak layers for a slab: the faceted crystals around the latest melt-freeze crust or loose powder snow right beneath the wind-bonded snow, in isolated cases there is also hoar embedded inside. Up to 2000 m, the snow on sunny slopes is already sticky.

## Weather

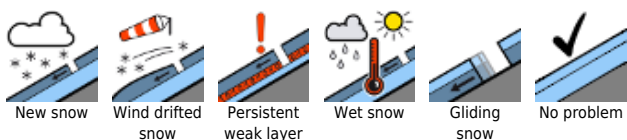
On Wednesday, visibility is outstanding, and there is sunshine. The brisk W/N winds can disturb, especially at summit and crest levels. At 2000 m: -3 degrees; at 3000 m: -8 degrees.

On Thursday, generally good visibility, high-altitude cloudbanks might cause diffuse light. The summits will be free. Strong W/N winds will irritate. At 2000 m: 0 degrees; at 3000 m: -6 degrees.

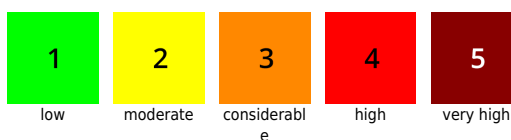
## Outlook

Danger levels further diminishing.

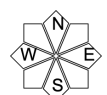
### Avalanche problems



### Danger ratings

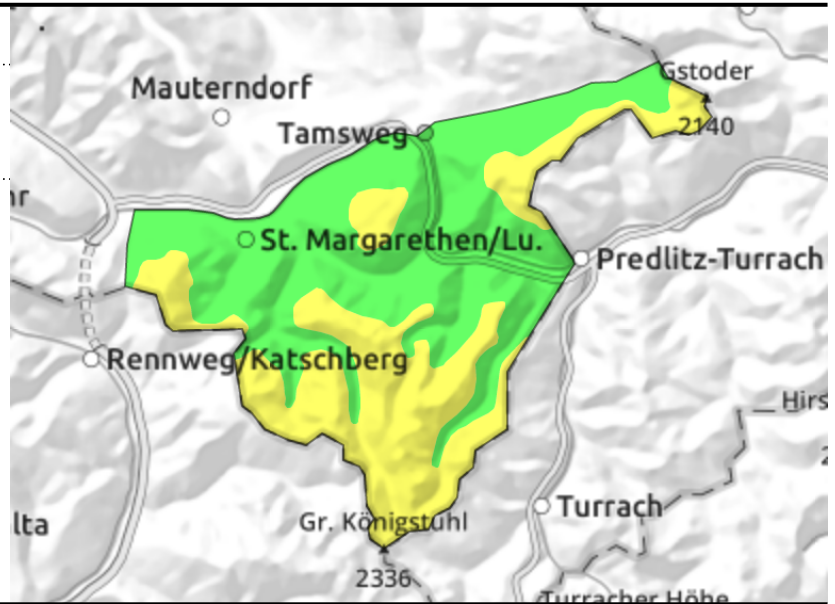
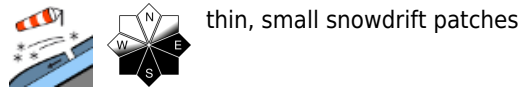


### Expositions



**26.01.2022**

**Nockberge**



**Heed snowdrift accumulations**

Fresh and older snowdrifts, mostly thin and small, can trigger by large additional loading

**Snowpack structure**

The terrain is starkly windblown. Hardened crusts lie adjacent to easily recognized snowdrift accumulations in wind-protected zones (forest rims, bowls). The snowdrifts often lie deposited atop weak layers and melt-freeze crusts.

**Weather**

On Wednesday sunny, good visibility, irritating NW winds. At 2000 m: -3 degrees.

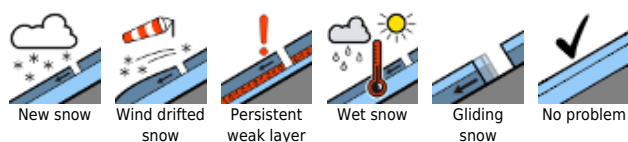
On Thursday, good visibility, a few cloudbanks will pass through. The NW winds will continue to disturb. At 2000 m: 0 degrees.

**Outlook**

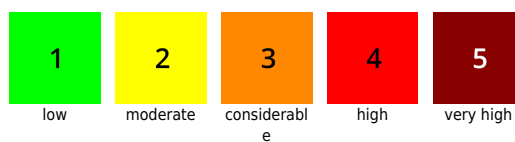
Little change.

Translated by Jeffrey McCabe, [www.creativtrans.com](http://www.creativtrans.com)

**Avalanche problems**



**Danger ratings**



**Expositions**

