

Settling noises and weak layers above 1800 m

	<p>1500 m Osterhorngruppe, Gamsfeldgruppe, Untersbergstock, Chiemgauer Alpen, Heutal, Reiteralpe, Pongauer Grasberge</p>	
	<p>1800 m Tennengebirge, Gosaukamm, Steinernes Meer, Hochkönig, Hagengebirge, Göllstock, Loferer und Leoganger Steinberge, Kitzbüheler Alpen, Glemmtal, Oberpinzgauer Grasberge, Dientner Grasberge, Goldberggruppe Nord, Glocknergruppe Nord, Großvenedigergruppe Nord, Großvenedigergruppe Alpenhauptkamm, Glocknergruppe Alpenhauptkamm, Goldberggruppe Alpenhauptkamm, Niedere Tauern Nord, Niedere Tauern Alpenhauptkamm</p>	
	<p>1800 m Niedere Tauern Süd, Ankogelgruppe, Muhr</p>	
	<p>1799 m Nockberge</p>	

Avalanche problems



Danger ratings



Expositions



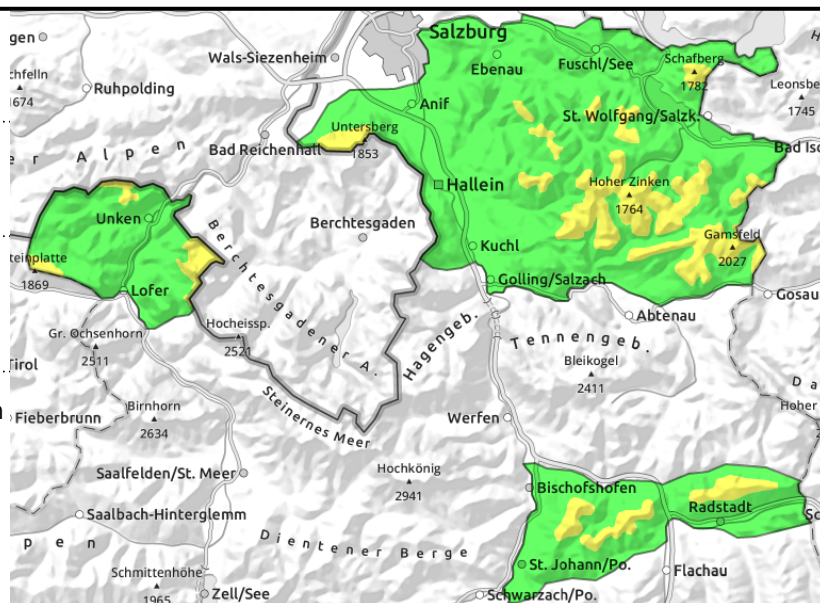
25.01.2022

Osterhorngruppe, Gamsfeldgruppe, Untersbergstock, Chiemgauer Alpen, Heutal, Reiteralpe, Pongauer Grasberge



near to and distant from ridgelines, at rims, still triggerable

small loose-snow avalanches in steep sunny terrain, isolated glide-snow avalanches



Caution above 1500 m

Avalanche danger above 1500 m is MODERATE, below that altitude danger is LOW. Caution on very steep slopes, avoid particularly extended eastern aspects and north-facing slopes (or load minimally). Beneath the compact mass of new snow there are weak layers which can be triggered (a fall, on foot, no distances) and grow to medium-size avalanches, in isolated cases large-sized. Naturally triggered avalanches are rather rare. Isolated loose-snow avalanches in steep rocky terrain or isolated glide-snow avalanches where the ground was bare are possible.

Snowpack structure

The abundant fresh snow has settled somewhat. Sink-in depths and proneness to triggering have decreased. Beneath the latest drifts and the big mass of fresh snow are still weak layers which can be triggered more easily with ascending altitude (blanketed powder, faceted weak layers on shady slopes beneath the latest melt-freeze crusts).

Weather

On Tuesday, cloudless skies. Outstanding visibility. The NW winds will intensify (30-40 km/hr). Mildest day of the week. Temperature at 2000 m: -1 degree. On Wednesday, again cloudless skies, outstanding visibility, lots of sunshine. Moderate to brisk W/NW winds. Temperatures will recede. AT 2000 m: -4 degrees.

Outlook

Little change, danger levels slightly diminishing.

Avalanche problems



Danger ratings

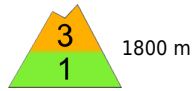
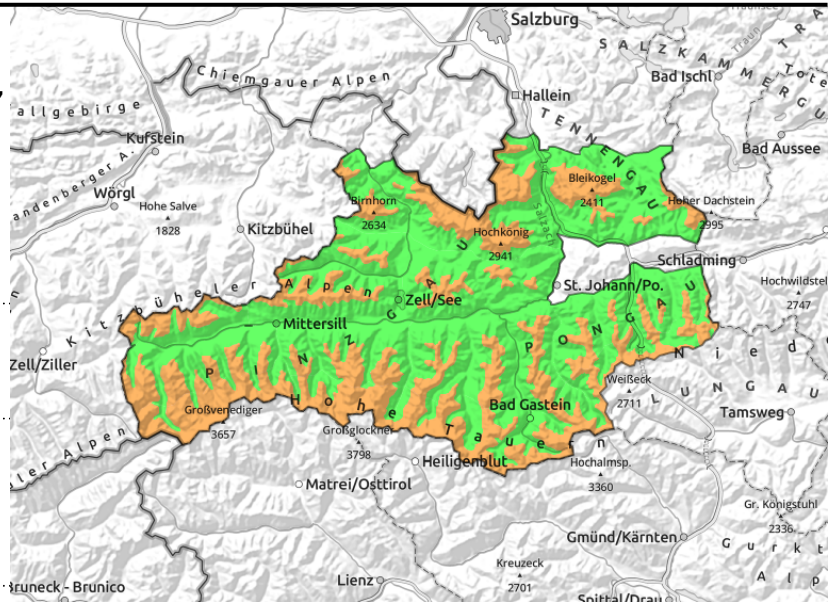


Expositions



25.01.2022

Tennengebirge, Gosaukamm, Steinernes Meer, Hochkönig, Hagengebirge, Göllstock, Loferer und Leoganger Steinberge, Kitzbüheler Alpen, Glemmtal, Oberpinzgauer Grasberge, Dientner Grasberge, Goldberggruppe Nord, Glocknergruppe Nord, Großvenedigergruppe Nord, Großvenedigergruppe Alpenhauptkamm, Glocknergruppe Alpenhauptkamm, Goldberggruppe Alpenhauptkamm, Niedere Tauern Nord, Niedere Tauern Alpenhauptkamm



very irregularly distributed snow, distant from ridges, forest rims, edges of drifts, easily triggered



small loose-snow avalanches in sunny steep terrain, isolated glide-snow avalanches

Unfavorable structuring above 1800 m

Avalanche danger above 1800 m is CONSIDERABLE, below that altitude danger mostly LOW. Restraint is still called for in outlying terrain.

Skiers/boarders can trigger a slab in all aspects on very steep slopes above 1800 m. Eastern aspects are more sensitive than the others.

The impulse of one single person is sufficient, most susceptible are the rims of snowdrift accumulations, i.e. in transitions from shallow to deeper snow. Slabs can be medium-to-large sized. Caution also on very steep shady slopes, even below the treeline.

Naturally triggered avalanches are rare. Isolated loose-snow avalanches in steep rocky terrain and isolated glide-snow avalanches where there was bare ground before this snowfall are possible.

Snowpack structure

The abundant fresh snow has settled, at least up to 1800 m on sunny slopes. Sink-in depths and proneness to triggering have decreased.

Further up, things are different. As of 1800 m there are audible settling noises. Snowpack analysis reveals weak layers which tend toward fracture propagation (blanketed powder and faceted layers beneath the latest melt-freeze crusts on shady slopes).

Weather

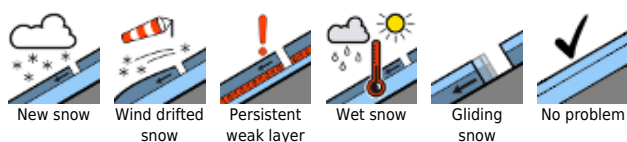
On Tuesday, cloudless skies. Outstanding visibility. The NW winds will intensify (30-40 km/hr). Mildest day of the week. Temperature at 2000 m: -1 degree, at 3000 m: -5 degrees.

On Wednesday, again cloudless skies, outstanding visibility, lots of sunshine. Moderate to brisk W/NW winds. Temperatures will recede. At 2000 m: -4 degrees. at 3000 m -8 degrees.

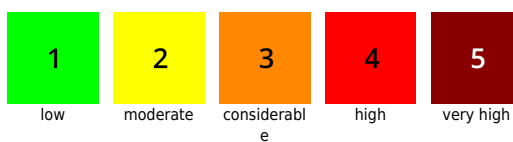
Outlook

Little change at high altitudes, elsewhere danger levels slightly diminishing.

Avalanche problems



Danger ratings



Expositions

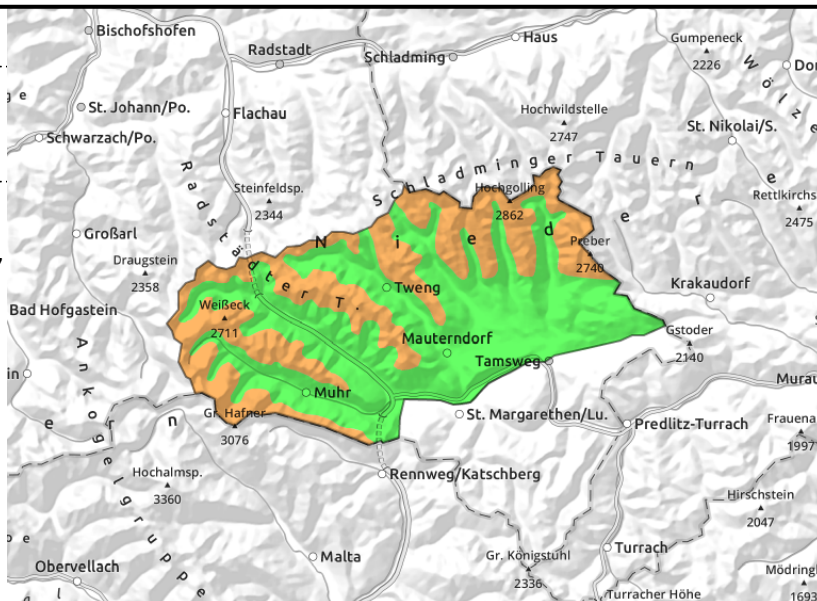


25.01.2022

Niedere Tauern Süd, Ankogelgruppe, Muhr



snow very irregularly distributed, distant from ridges, forest rims, edges of drifts, easily triggered



Snowdrifts at rims often triggerable

Avalanche danger above 1800 m is **CONSIDERABLE**, below that altitude danger is **LOW**. Snowdrift accumulations are found in all aspects, one person can trigger an avalanche. Slabs can be medium-to-large sized. Caution: danger zones lie immediately adjacent to windblown spots.

Snowpack structure

The extreme storm winds have utterly windblown the snow and distributed it in very irregular ways. Exposed terrain is windblown or pressed. Snowdrifts lie in gullies, bowls, in wind-protected terrain, where beneath the drifts are weak layers which can still be triggered with ascending altitude (blanketed powder and faceted weak layers at high altitudes beneath the latest melt-freeze crusts).

Weather

On Tuesday, cloudless skies. Outstanding visibility. The NW winds will intensify (30-40 km/hr). Mildest day of the week. Temperature at 2000 m: -1 degree, at 3000 m: -5 degrees. On Wednesday, again cloudless skies, outstanding visibility, lots of sunshine. Moderate to brisk W/NW winds. Temperatures will recede. At 2000 m: -4 degrees. at 3000 m -8 degrees.

Outlook

Little change at high altitudes, elsewhere danger levels slightly diminishing.

Avalanche problems



Danger ratings

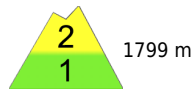


Expositions

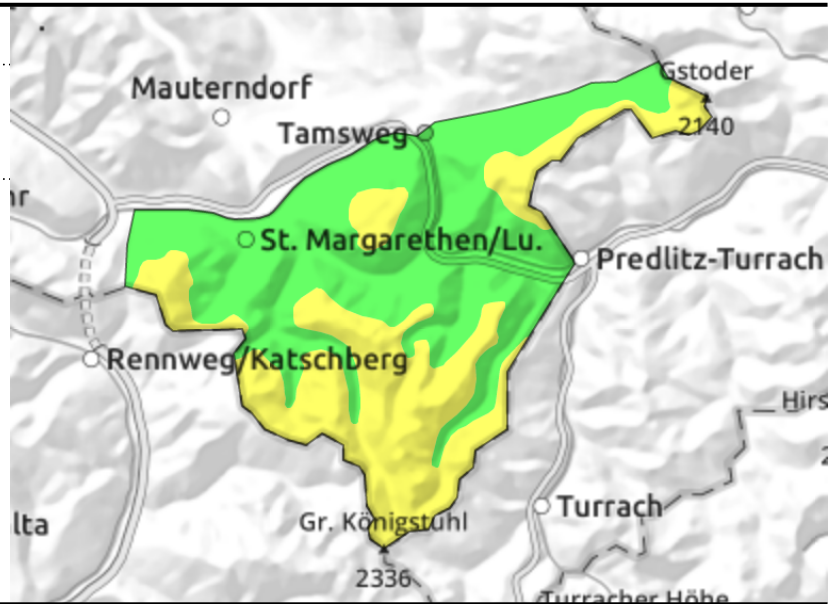


25.01.2022

Nockberge



isolated danger zones distant from ridges, forest rims, in gullies, steep bowls



Caution in gullies and steep bowls

Little change: avalanche danger above the timberline is MODERATE.

Isolated danger zones due to fresh snowdrift accumulations are found in the steep wind-loaded zones from Saturday (gullies, steep bowls, forest clearances, etc.) and in W/S/E terrain distant from ridgelines. Usually large additional loading is necessary to trigger an avalanche.

Snowpack structure

Due to the latest storm winds, the terrain is utterly windblown. Hardened crusts lie immediately adjacent to deep drifts in the protected zones (forest rims, bowls). Snowdrifts often lie atop weak layers and melt-freeze crusts.

Weather

On Tuesday, cloudless skies. Outstanding visibility. The NW winds will intensify (30-40 km/hr). Mildest day of the week. Temperature at 2000 m: -1 degree, at 3000 m: -5 degrees.

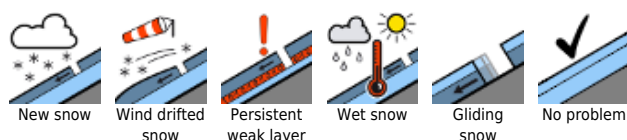
On Wednesday, again cloudless skies, outstanding visibility, lots of sunshine. Moderate to brisk W/NW winds. Temperatures will recede. At 2000 m: -4 degrees. at 3000 m.

Outlook

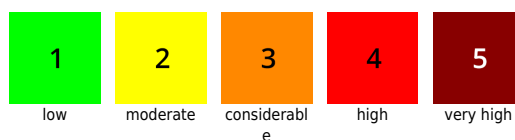
Little change.

Translated by Jeffrey McCabe, www.creativtrans.com

Avalanche problems



Danger ratings



Expositions

