

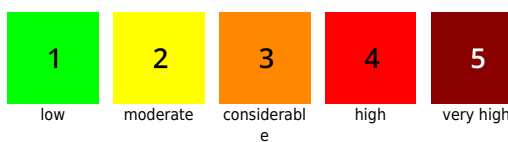
Snowdrifts still treacherous with ascending altitude

	Osterhorngruppe, Gamsfeldgruppe, Untersbergstock, Chiemgauer Alpen, Heutal, Reiteralpe				
	1800 m Tennengebirge, Gosaukamm, Steinernes Meer, Hochkönig, Hagengebirge, Göllstock, Kitzbüheler Alpen, Glemmtal, Oberpinzgauer Grasberge, Dientner Grasberge, Loferer und Leoganger Steinberge, Pongauer Grasberge, Niedere Tauern Nord, Glocknergruppe Nord, Großvenedigergruppe Nord, Goldberggruppe Nord				
	1800 m Niedere Tauern Süd, Ankogelgruppe, Muhr				
	Großvenedigergruppe Alpenhauptkamm, Glocknergruppe Alpenhauptkamm, Niedere Tauern Alpenhauptkamm, Goldberggruppe Alpenhauptkamm				
	1800 m Nockberge				

Avalanche problems



Danger ratings



Expositions



24.01.2022

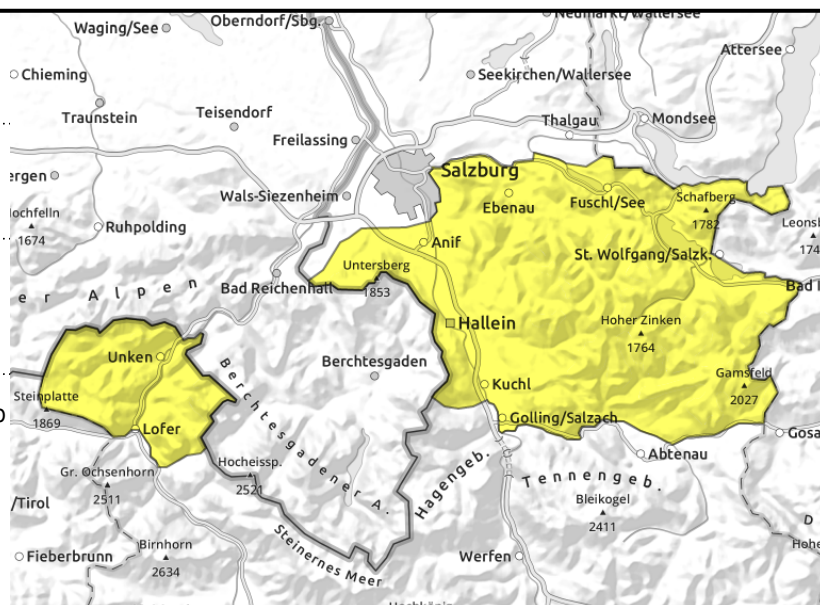
**Osterhorngruppe, Gamsfeldgruppe,
Untersbergstock, Chiemgauer Alpen, Heutal,
Reiteralpe**



near to and distant from ridgelines, at forest rims, still triggerable



loose-snow avalanches in steep sunny terrain, isolated glide-snow avalanches



AVOID very steep slopes!

Avalanche danger is MODERATE.

Caution urged on very steep slopes. They should be avoided. Beneath the compact fresh snow there are weak layers which can be triggered by large additional loading (a fall, on foot, no distances).

Avalanches can grow to medium size, in isolated cases to large size.

Due to recent storm winds there are snowdrift accumulations in all aspects. Caution urged on very steep shady slopes, also below the treeline.

Naturally triggered avalanches are rare. Isolated loose-snow avalanches in steep rocky terrain and isolated glide-snow avalanches where there was bare ground before this snowfall are possible.

Snowpack structure

The abundant fresh snow has settled, at least up to 1800 m on sunny slopes. Sink-in depths and proneness to triggering have decreased. Beneath the latest drifts and the recent mass of fresh snow there are still weak layers which can be triggered (blanketed powder on shady slopes and faceted weak layers beneath the latest melt-freeze crusts).

Weather

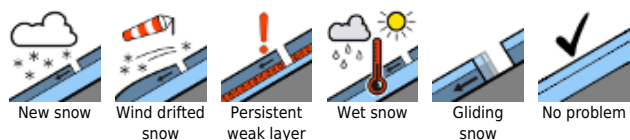
On Monday, sunshine, nearly cloudless skies, little wind, slightly higher temperatures. At 2000 m: -4 degrees.

On Tuesday, cloudless skies again, outstanding visibility. The NW winds will intensify slightly (30 km/hr). Mildest day of the week. Temperature at 2000 m: -1 degree.

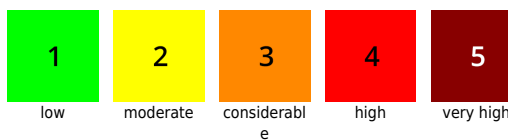
Outlook

Further decrease in avalanche danger.

Avalanche problems



Danger ratings

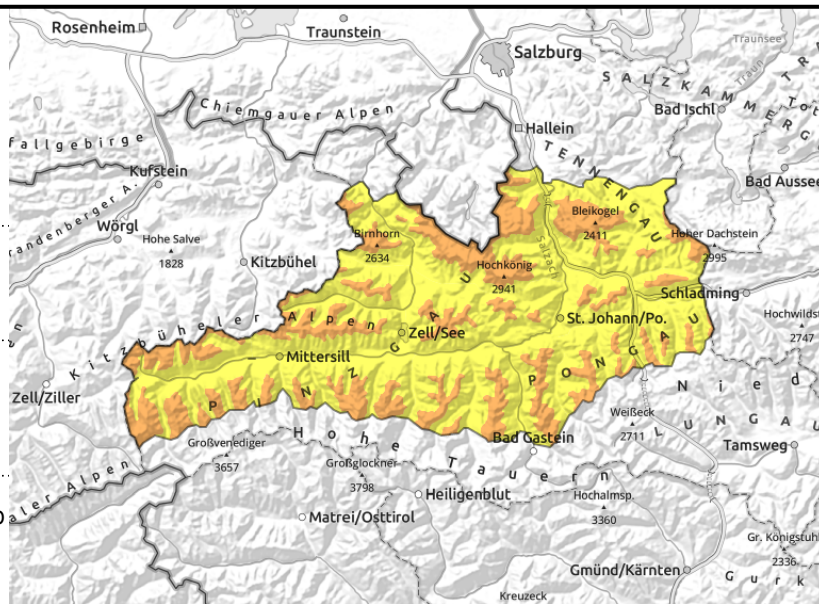


Expositions



24.01.2022

Tennengebirge, Gosaukamm, Steinernes Meer, Hochkönig, Hagengebirge, Göllstock, Kitzbüheler Alpen, Glemmtal, Oberpinzgauer Grasberge, Dientner Grasberge, Loferer und Leoganger Steinberge, Pongauer Grasberge, Niedere Tauern Nord, Glocknergruppe Nord, Großvenedigergruppe Nord, Goldberggruppe Nord



very irregular distribution, forest rims, often easily triggered



loose-snow avalanches in steep sunny terrain, isolated glide-snow avalanches

Snowdrifts still triggerable with ascending altitude

Avalanche danger above 1800 m is CONSIDERABLE.

Skiers/boarders can trigger a slab in all aspects on very steep slopes above 1800 m. The impulse of one single person is sufficient, most susceptible are the rims of snowdrift accumulations, i.e. in transitions from shallow to deeper snow. Slabs can be medium-to-large sized. Caution also on very steep shady slopes, even below the treeline.

Naturally triggered avalanches are rare. Isolated loose-snow avalanches in steep rocky terrain and isolated glide-snow avalanches where there was bare ground before this snowfall are possible.

Snowpack structure

The abundant fresh snow has settled, at least up to 1800 m on sunny slopes. Sink-in depths and proneness to triggering have decreased. Beneath the latest drifts and the recent mass of fresh snow there are still weak layers which can be triggered (blanketed powder on shady slopes and faceted weak layers beneath the latest melt-freeze crusts).

Weather

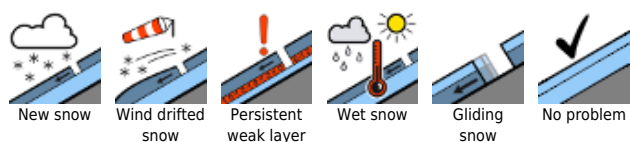
On Monday, sunshine, nearly cloudless skies, little wind, slightly higher temperatures. At 2000 m: -4 degrees, at 3000 m, -8 degrees.

On Tuesday, cloudless skies again, outstanding visibility. The NW winds will intensify slightly (30 km/hr). Mildest day of the week. Temperature at 2000 m: -1 degree, at 3000 m, -5 degrees.

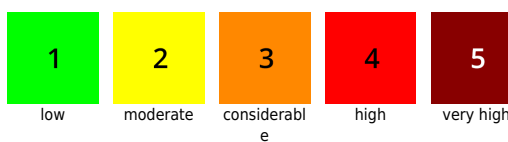
Outlook

Further decrease in avalanche danger.

Avalanche problems



Danger ratings





Expositions

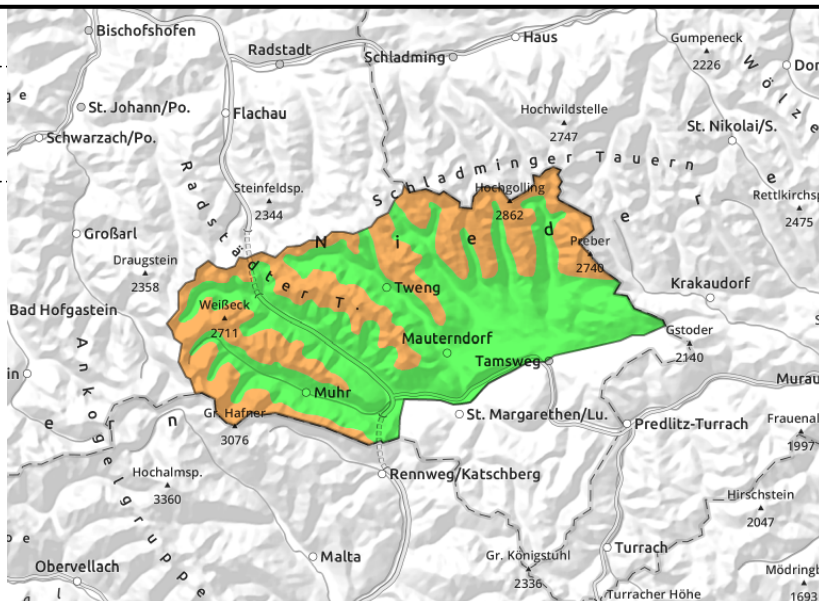


24.01.2022

Niedere Tauern Süd, Ankogelgruppe, Muhr



  very irregular distribution, gullies, forest rims, often easily triggered



Snowdrifts still triggerable at the rims of drifts

Avalanche danger above 1800 m is **CONSIDERABLE**, below that altitude danger is **LOW**. Snowdrift accumulations are found in all aspects, one person can trigger an avalanche. Slabs can be medium-to-large sized. Caution: danger zones lie immediately adjacent to windblown spots.

Snowpack structure

Due to extreme storm, the latest bout of fresh snow is heavily windblown and irregularly distributed. Exposed terrain is windblown or pressed. Snowdrifts lie in gullies, bowls, in wind-protected terrain, where beneath the drifts are weak layers which can still be triggered with ascending altitude (blanketed powder and faceted weak layers at high altitudes beneath the latest melt-freeze crusts).

Weather

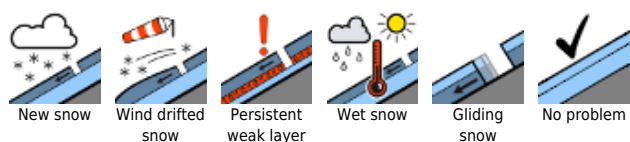
On Monday, sunshine, nearly cloudless skies, little wind, slightly higher temperatures. At 2000 m: -4 degrees, at 3000 m, -8 degrees.

On Tuesday, cloudless skies again, outstanding visibility. The NW winds will intensify slightly (30 km/hr). Mildest day of the week. Temperature at 2000 m: -1 degree, at 3000 m, -5 degrees.

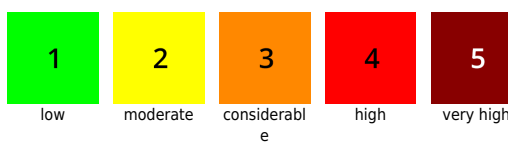
Outlook

Further decrease in avalanche danger.

Avalanche problems



Danger ratings

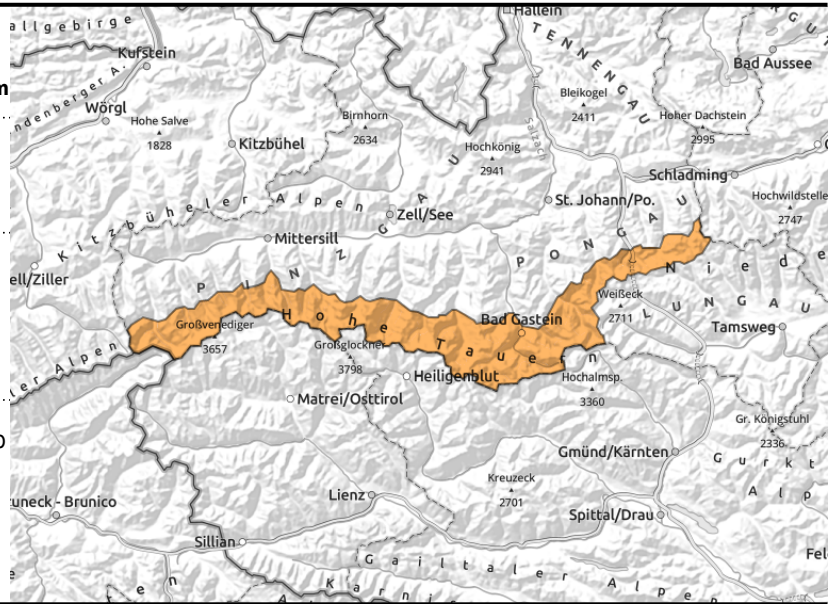


Expositions



24.01.2022

**Großvenedigergruppe Alpenhauptkamm,
Glocknergruppe Alpenhauptkamm, Niedere Tauern
Alpenhauptkamm, Goldberggruppe Alpenhauptkamm**



very irregular distribution, distant from ridgelines, gullies, forest rims, often easily triggered



loose-snow avalanches in steep sunny terrain, isolated glide-snow avalanches

Snowdrifts still easily triggerable at rims of drifts

Avalanche danger above the treeline is CONSIDERABLE (3). Restraint and experience are advantageous.

Snowdrift accumulations are found in all aspects, one person can trigger an avalanche. Slabs can be medium-to-large sized. Caution: danger zones lie immediately adjacent to windblown spots.

Naturally triggered avalanches are rare. Isolated loose-snow avalanches in steep rocky terrain and isolated glide-snow avalanches where there was bare ground before this snowfall are possible.

Snowpack structure

Snowpack: The abundant fresh snow has settled, at least up to 1800 m on sunny slopes. Sink-in depths and proneness to triggering have decreased. Beneath the latest drifts and the recent mass of fresh snow there are still weak layers which can be triggered (blanketed powder on shady slopes and faceted weak layers beneath the latest melt-freeze crusts).

Outlying terrain: due to extreme storm winds the snow has been transported and irregularly distributed. Wind exposed terrain is windblown or hard-pressed. Most of the fresh snow is found between forest rims and terrain distant from ridgelines and on S/E slopes.

Weather

On Monday, sunshine, nearly cloudless skies, little wind, slightly higher temperatures. At 2000 m: -4 degrees, at 3000 m, -8 degrees.

On Tuesday, cloudless skies again, outstanding visibility. The NW winds will intensify slightly (30 km/hr). Mildest day of the week. Temperature at 2000 m: -1 degree, at 3000 m, -5 degrees.

Outlook

Further decrease in avalanche danger.

Avalanche problems



New snow



Wind drifted snow



Persistent weak layer



Wet snow



Gliding snow



No problem

Danger ratings



1

low



2

moderate



3

considerable



4

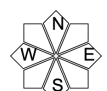
high



5

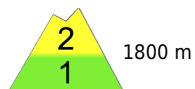
very high

Expositions

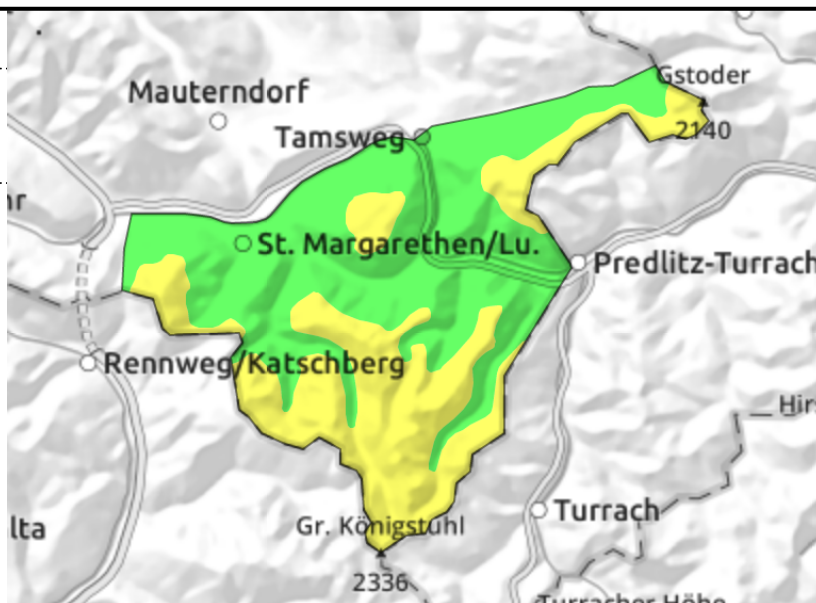


24.01.2022

Nockberge



isolated avalanche prone locations distant from ridgelines, in forest zones, gullies, steep bowls



Caution urged towards drifts in steep bowls

Little change from yesterday. Avalanche danger above the treeline is MODERATE. Isolated danger zones due to freshly generated snowdrift accumulations are found on wind-loaded slopes (gullies, steep bowls, forest clearances, etc.) and on W/S/E facing slopes distant from ridgelines. Triggering requires usually large additional loading.

Snowpack structure

Due to storm winds the terrain is starkly windblown. Hardened crusts lie immediately adjacent to easily recognized snowdrift accumulations in the wind-protected zones (forest rims, bowls). The drifts often lie deposited atop weak layers and melt-freeze crusts.

Weather

On Monday, sunshine, nearly cloudless skies, little wind, slightly higher temperatures. At 2000 m: -4 degrees, at 3000 m, -8 degrees.

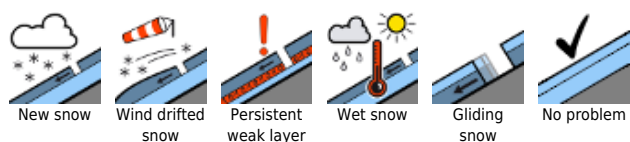
On Tuesday, cloudless skies again, outstanding visibility. The NW winds will intensify slightly (30 km/hr). Mildest day of the week. Temperature at 2000 m: -1 degree, at 3000 m, -5 degrees.

Outlook

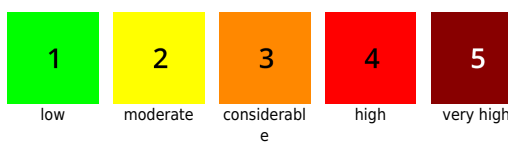
Little change. Danger zones will decrease slightly due to the higher temperatures.

Translated by Jeffrey McCabe, www.creativtrans.com

Avalanche problems



Danger ratings



Expositions

