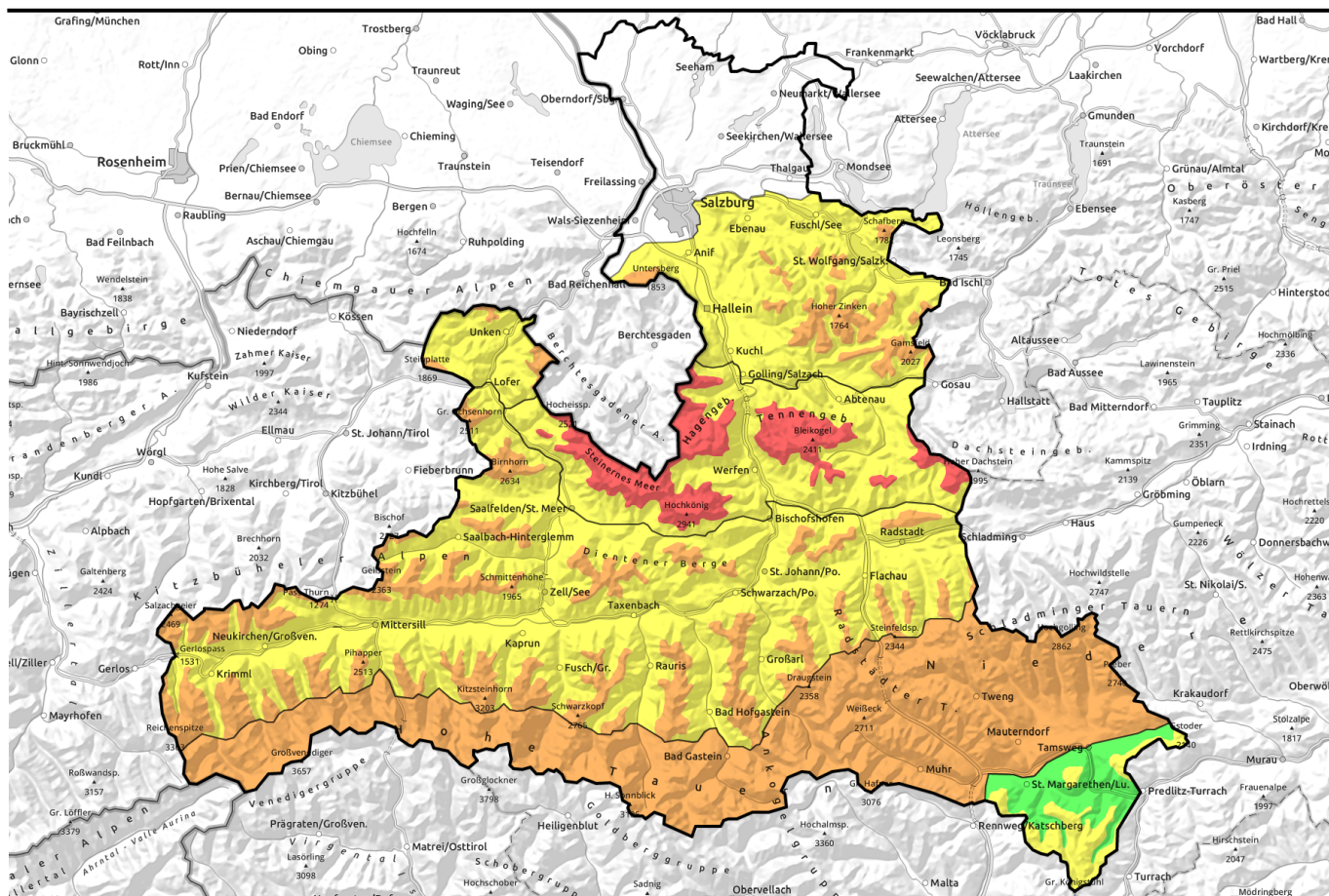


**23.01.2022**



## CONSIDERABLE avalanche danger widespread above 1500 m

	1800 m	Nockberge		
	2000 m	Tennengebirge, Gosaukamm, Steinernes Meer, Hochkönig, Hagengebirge, Göllstock		
		Großenedigergruppe Alpenhauptkamm, Glocknergruppe Alpenhauptkamm, Goldberggruppe Alpenhauptkamm, Niedere Tauern Alpenhauptkamm, Niedere Tauern Süd, Ankogelgruppe, Muhr		
	1500 m	Loferer und Leoganger Steinberge, Oberpinzgauer Grasberge, Großenedigergruppe Nord, Glocknergruppe Nord, Goldberggruppe Nord, Pongauer Grasberge, Niedere Tauern Nord, Kitzbüheler Alpen, Glemmtal, Dientner Grasberge		
	1500 m	Chiemgauer Alpen, Heutal, Reiteralpe, Osterhorngruppe, Gamsfeldgruppe, Untersbergstock		

### Avalanche problems



### Danger ratings



### Expositions

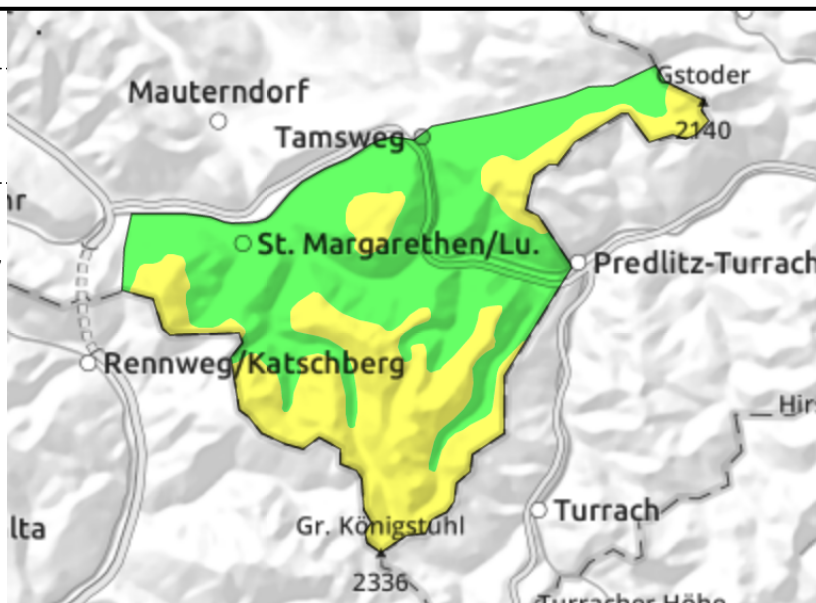


**23.01.2022**

**Nockberge**



isolated danger zones distant from ridgelines, in forest zones, gullies, steep bowls



**Caution urged towards drifts in steep bowls.**

Avalanche danger above the timberline is MODERATE. Isolated danger zones due to fresh snowdrift accumulations are found in wind-loaded steep gullies, bowls, forest clearances, and in W/S/E aspects distant from ridgelines.

**Snowpack structure**

Backcountry terrain is heavily windblown due to storm-strength winds. Hard crusts lie adjacent to easily recognized snowdrift masses in wind-protected terrain (forest rims, bowls). Snowdrifts often lie atop weak layers and melt-freeze crusts.

**Weather**

On Sunday it will be sunny, not as stormy (northerly winds reaching 40-60 km/hr). Temperature at 2000 m: -7 degrees.

On Monday, sunshine. Mostly light winds. Temperature at 2000 m: -4 degrees; at 3000 m. -8 degrees.

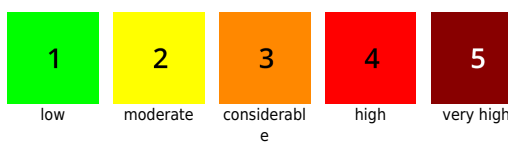
**Outlook**

Little change. Danger zones will decrease as temperatures rise.

**Avalanche problems**



**Danger ratings**




**Expositions**




# 23.01.2022

Tennengebirge, Gosaukamm, Steinernes Meer, Hochkönig, Hagengebirge, Göllstock ✘



 distant from ridgelines, slabs can grow to large-to-very-large size

 warmth impulse and sunshine in the afternoon; small-to-medium sized avalanches possible

## Stark differences to high altitudes. Instable snowdrifts at high altitude.

Avalanche danger above 2000 m is HIGH (high), below that altitude danger is mostly MODERATE. The high danger level results from the ease with which skiers/boarders can trigger an avalanche and how large these releases can become.

Danger zones occur in all aspects. The impulse of one sole skier can trigger an avalanche of medium-to-very-large size. Caution is urged on steep shady slopes, also below the treeline.

The likelihood of naturally triggered avalanches is less today than yesterday. Isolated naturally triggered slab avalanches can trigger naturally in heavily wind-loaded zones and loose-snow avalanches from steep rocky terrain due to higher temperatures and diffuse solar radiation during the afternoon.

### Snowpack structure

The abundant fresh snow was heavily blown by storm-strength winds above the treeline, and irregularly distributed. Wind-exposed terrain at high altitudes is windblown, most of the fresh snow is located at forest rims and on south-facing to east-facing slopes.

Due to higher temperatures on Saturday the likelihood of triggering has diminished on Saturday (snow settled). **But not at high altitudes.** Beneath the latest snowdrifts and the entire mass of fresh snow of the last three days (50-100 cm) there are still weak layers which can be triggered (blanketed powder and faceted weak layers beneath the latest melt-freeze crusts on north-facing slopes at high altitudes).

### Weather

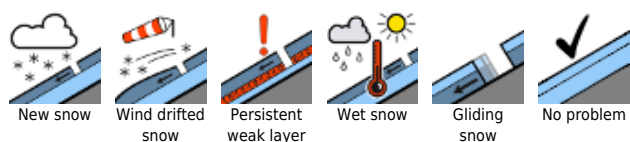
On **Sunday** it will be sunny, not as stormy (northerly winds reaching 30-40 km/hr). Temperature at 2000 m: -7 degrees.

On **Monday**, sunshine. Mostly light winds. Temperature at 2000 m: -4 degrees; at 3000 m. -8 degrees.

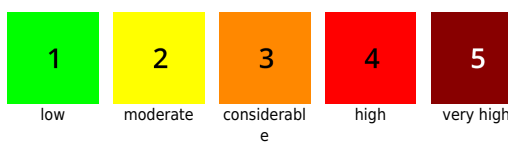
### Outlook

Danger zones will decrease.

#### Avalanche problems




#### Danger ratings



#### Expositions



**23.01.2022**

Großvenedigergruppe Alpenhauptkamm,   
 Glocknergruppe Alpenhauptkamm, Goldberggruppe  
 Alpenhauptkamm, Niedere Tauern Alpenhauptkamm,  
 Niedere Tauern Süd, Ankogelgruppe, Muhr



distant from ridgelines, often  
easily triggered



settling impulse of new snow  
due to warmth and sunshine in  
the afternoon

## Considerable snowdrift problem

Avalanche danger is CONSIDERABLE (3) and starts below the treeline. Restraint and experience are required.

Due to the latest storm winds, snowdrift accumulations occur in all aspects which can be triggered even by the weight of one single skier/boarder and grow to medium-to-large size. Danger zones often lie immediately adjacent to windblown areas.

Naturally triggered avalanches will be rare on Sunday. Isolated naturally triggered releases can take place in heavily wind-loaded zones and loose-snow avalanches in steep rocky terrain due to warmth and solar radiation in the afternoon.

## Snowpack structure

The abundant fresh snow was heavily blown by storm-strength winds above the treeline, and irregularly distributed. Wind-exposed terrain at high altitudes is windblown, most of the fresh snow is located at forest rims and on south-facing to east-facing slopes.

Due to higher temperatures on Saturday the likelihood of triggering has diminished on Saturday (snow settled). **But not at high altitudes.** Beneath the latest snowdrifts and the entire mass of fresh snow of the last three days (50-100 cm) there are still weak layers which can be triggered (blanketed powder and faceted weak layers beneath the latest melt-freeze crusts on north-facing slopes at high altitudes).

## Weather

On Sunday it will be sunny, not as stormy (northerly winds reaching 30-40 km/hr). Temperature at 2000 m: -7 degrees.

On Monday, sunshine. Mostly light winds. Temperature at 2000 m: -4 degrees; at 3000 m. -8 degrees.

## Outlook

Danger zones will decrease as temperatures rise.

### Avalanche problems



New snow

Wind drifted  
snowPersistent  
weak layer

Wet snow

Gliding  
snow

No problem

### Danger ratings

1  
low2  
moderate3  
considerabl  
e4  
high5  
very high

### Expositions



**23.01.2022**

Loferer und Leoganger Steinberge, Oberpinzgauer  
Grasberge, Großvenedigergruppe Nord,  
Glocknergruppe Nord, Goldberggruppe Nord,  
Pongauer Grasberge, Niedere Tauern Nord,  
Kitzbüheler Alpen, Glemmtal, Dientner Grasberge



distant from ridgelines, at  
forest rims, with ascending  
altitude more easily triggered



settling impulse of new snow  
due to warmth and sunshine in  
the afternoon; small-to-medium  
avalanches possible

## Snowdrifts more easily triggered with ascending altitude

Avalanche danger above 1500 m is CONSIDERABLE (3), below that altitude danger is MODERATE. Restraint and experience is required in outlying terrain.

Winter sports enthusiasts can trigger a slab avalanche easily in very steep zones above 1500 m, particularly in NE/E/S/W aspects. The impulse of one sole skier can be sufficient, Slab avalanches can be medium-to-large sized. Caution also urged on very steep shady slopes, also below the treeline. Naturally triggered avalanches will be seldom on Sunday. Isolated naturally triggered releases can occur on heavily wind-loaded slopes and loose-snow avalanches in steep rocky terrain due to warmth and sunshine in the afternoon.

### Snowpack structure

The abundant snowfall in some places was heavily windblown above the treeline and distributed quite irregularly. Wind-exposed terrain is blown bare, most of the new snow is found at forest rims on south-facing and east-facing slopes.

**Due to the warmth impulse on Saturday, the likelihood of avalanches triggering at lower altitudes diminished (due to settling).** At high altitudes, however, this is not the case. Below the last snowdrifts and the entire mass of new snow of the last three days (40-60 cm) there are still weak layers which can be triggered (blanketed powder and faceted weak layers beneath the latest melt-freeze crusts) in north-facing aspects and at high altitudes.

### Weather

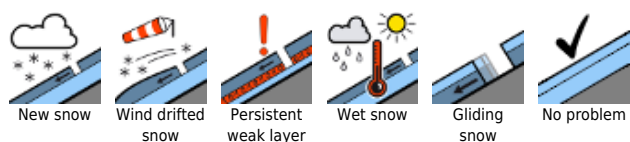
On Sunday it will be sunny, not as stormy (northerly winds reaching 30-40 km/hr). Temperature at 2000 m: -7 degrees.

On Monday, sunshine. Mostly light winds. Temperature at 2000 m: -4 degrees; at 3000 m. -8 degrees.

### Outlook

Danger zones will decrease as temperatures rise.

#### Avalanche problems



#### Danger ratings



#### Expositions



**23.01.2022**
**Chiemgauer Alpen, Heutal, Reiteralpe,  
Osterhorngruppe, Gamsfeldgruppe, Untersbergstock**


1500 m



distant from ridgelines, more easily triggered with ascending altitude



loose snow in steep rocky terrain, isolated glide-snow avalanches in bare terrain

## Snowdrifts more easily triggered with ascending altitude

Avalanche danger above 1500 m is CONSIDERABLE (3), below that altitude danger is MODERATE. Restraint and experience in outlying terrain are required.

Winter sports enthusiasts can trigger a slab avalanche in very steep terrain in NE/E/S/W aspects. The impulse of one single person is sufficient. Slab avalanches can grow to medium-to-large size.

Naturally triggered avalanches will be rare on Sunday. Isolated loose-snow avalanches are possible in steep rocky terrain or isolated glide-snow avalanches.

### Snowpack structure

The abundant snowfall in some places was heavily windblown above the treeline and distributed quite irregularly. Wind-exposed terrain is blown bare, most of the new snow is found at forest rims on south-facing and east-facing slopes.

**Due to the warmth impulse on Saturday, the likelihood of avalanches triggering at lower altitudes diminished (due to settling).** At high altitudes, however, this is not the case. Below the last snowdrifts and the entire mass of new snow of the last three days (40-60 cm) there are still weak layers which can be triggered (blanketed powder and faceted weak layers beneath the latest melt-freeze crusts) in north-facing aspects and at high altitudes.

### Weather

On Sunday it will be sunny, not as stormy (northerly winds reaching 30-40 km/hr). Temperature at 2000 m: -7 degrees.

On Monday, sunshine. Mostly light winds. Temperature at 2000 m: -4 degrees; at 3000 m. -8 degrees.

### Outlook

Danger zones will decrease.

Translated by Jeffrey McCabe, [www.creativtrans.com](http://www.creativtrans.com)

#### Avalanche problems



New snow



Wind drifted snow



Persistent weak layer



Wet snow



Gliding snow



No problem

#### Danger ratings



1

low



2

moderate



3

considerable



4

high



5

very high

#### Expositions

