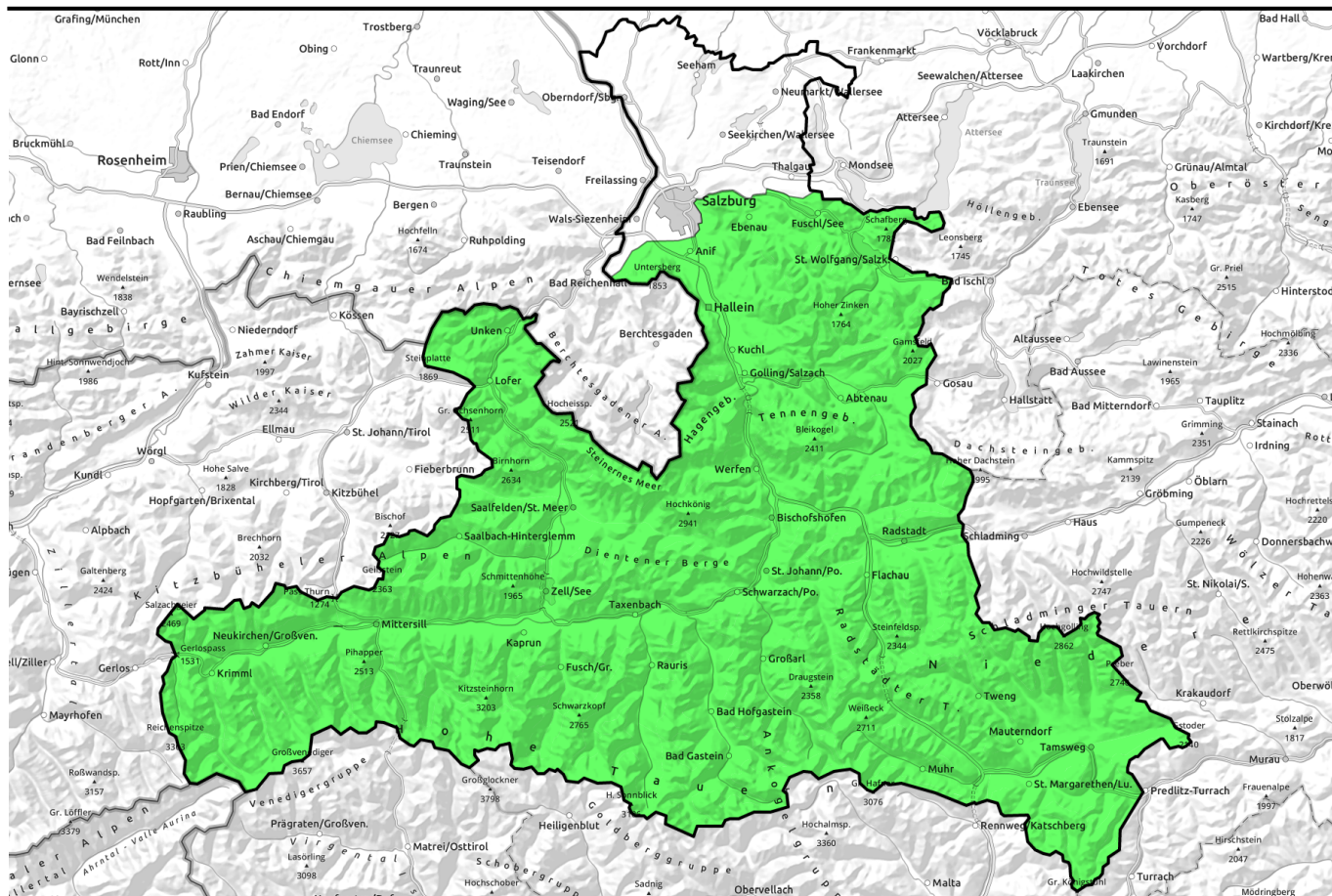


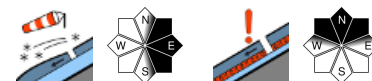
16.01.2022



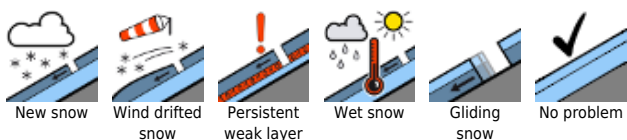
Snowpack mostly lacking in tensions



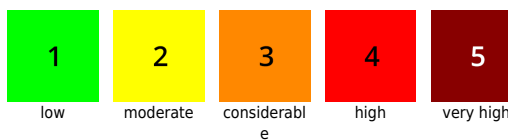
Chiemgauer Alpen, Heutal, Reiteralpe, Untersbergstock, Loferer und Leoganger Steinberge, Kitzbüheler Alpen, Glemmtal, Großvenedigergruppe Nord, Oberpinzgauer Grasberge, Glocknergruppe Nord, Dientner Grasberge, Goldberggruppe Nord, Pongauer Grasberge, Niedere Tauern Nord, Niedere Tauern Alpenhauptkamm, Nockberge, Osterhorngruppe, Gamsfeldgruppe, Tennengebirge, Gosaukamm, Steinernes Meer, Hochkönig, Hagengebirge, Göllstock, Ankogelgruppe, Muhr, Goldberggruppe Alpenhauptkamm, Großvenedigergruppe Alpenhauptkamm, Glocknergruppe Alpenhauptkamm



Avalanche problems



Danger ratings

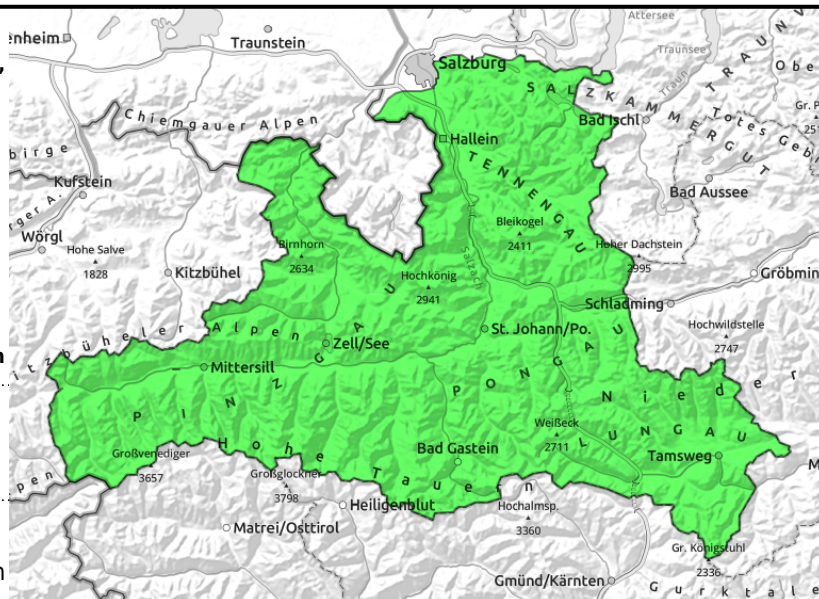


Expositions



16.01.2022

Chiemgauer Alpen, Heutal, Reiteralpe, Untersbergstock, Loferer und Leoganger Steinberge, Kitzbüheler Alpen, Glemmtal, Großvenedigergruppe Nord, Oberpinzgauer Grasberge, Glocknergruppe Nord, Dientner Grasberge, Goldberggruppe Nord, Pongauer Grasberge, Niedere Tauern Nord, Niedere Tauern Alpenhauptkamm, Niedere Tauern Süd, Nockberge, Osterhorngruppe, Gamsfeldgruppe, Tennengebirge, Gosaukamm, Steinernes Meer, Hochkönig, Hagengebirge, Göllstock, Ankogelgruppe, Muhr, Goldberggruppe Alpenhauptkamm, Großvenedigergruppe Alpenhauptkamm, Glocknergruppe Alpenhauptkamm



thin, small snowdrift accumulations, isolated, in high and high-alpine terrain



in shallow-snow, shady, high and high-altitude terrain

Favorable situation, hardly any danger zones

Avalanche danger is LOW. Hardly any danger zones. A small-to-medium slab could most likely trigger in extremely steep east-facing terrain (most recent drifts) or where the snow is shallow in high and high-alpine zones. (persistent weak layer). In extremely steep sunny and rocky terrain, small superficial avalanches can release - naturally or triggered by skiers. The danger of falling outweighs that of being buried in snow.

Snowpack structure

The snowpack has settled well and is stable, the layers have bonded well. A fracture in the uppermost melt-freeze or icy layers is possible in isolated cases (persistent weak layer). On shady slopes there is powder, on sunny slopes at low and intermediate altitudes there is melt-freeze. Some places have wind crusts, mostly breakable, fracture propagation possible only in isolated cases.

Weather

On Sunday, often sunny, mostly good visibility. A few clouds will pass through, the highest peaks could be shrouded. In the afternoon, temperatures will start to drop, 2000 m: 0 degrees; 3000 m: -5 degrees.

On Monday, stormy NW winds, poor visibility. Heavy clouds will move through, some intermittent snowfall. At 2000 m: -6 degrees; at 3000 m: -11 degrees.

Outlook

On Monday, strong NW winds, some fresh snow, slightly rising avalanche danger.

Translated by Jeffrey McCabe, www.creativtrans.com

Avalanche problems



New snow



Wind drifted snow



Persistent weak layer



Wet snow



Gliding snow



No problem

Danger ratings



1

low



2

moderate



3

considerable



4

high



5

very high

Expositions

