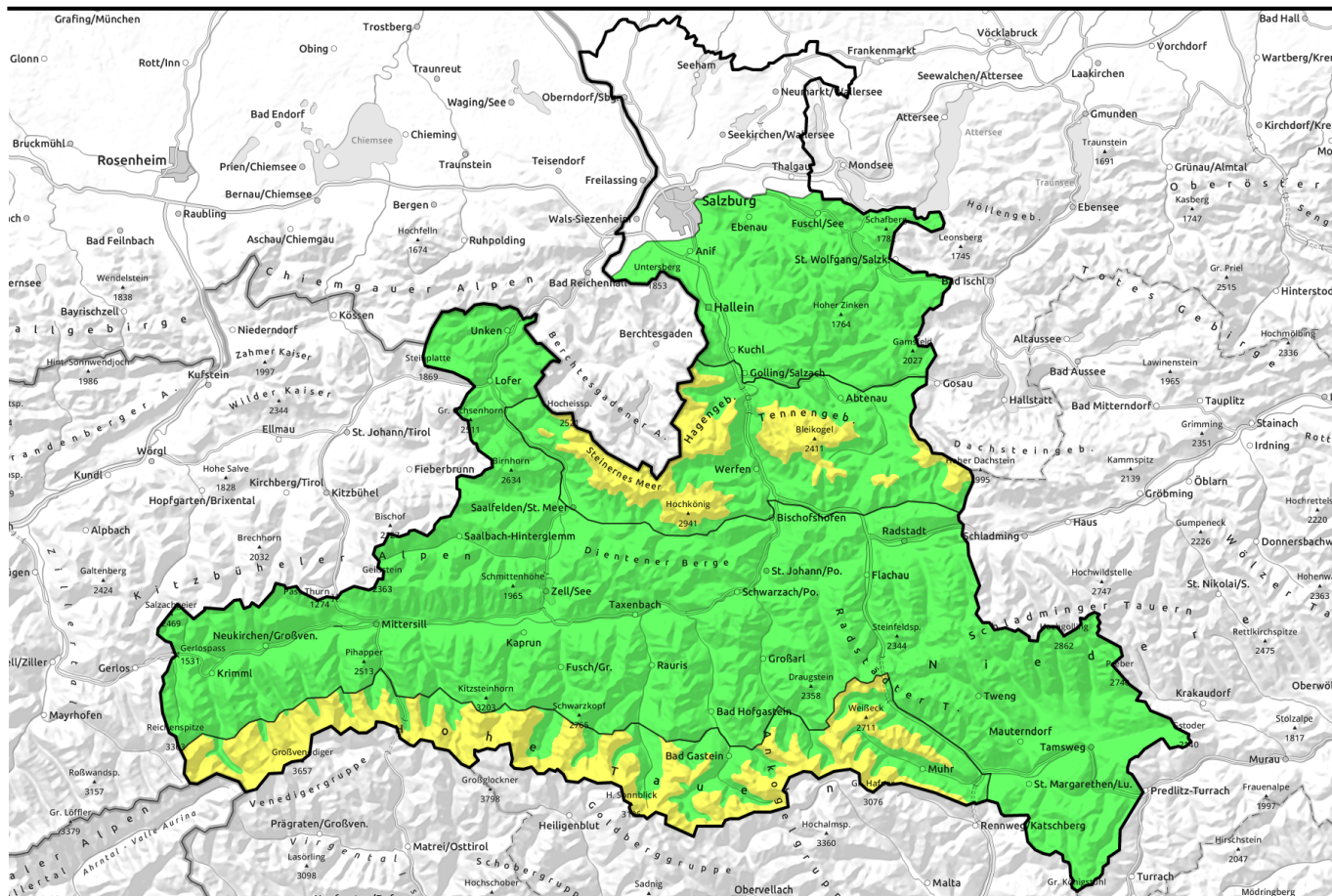


15.01.2022



Snowpack mostly lacking in tensions



Chiemgauer Alpen, Heutal, Reiteralpe, Osterhorngruppe, Gamsfeldgruppe, Untersbergstock, Loferer und Leoganger Steinberge, Kitzbüheler Alpen, Glemmtal, Großvenedigergruppe Nord, Oberpinzgauer Grasberge, Glocknergruppe Nord, Dientner Grasberge, Goldberggruppe Nord, Pongauer Grasberge, Niedere Tauern Nord, Niedere Tauern Alpenhauptkamm, Niedere Tauern Süd, Nockberge

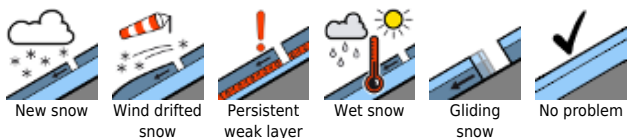


2300 m

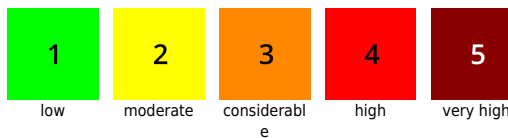
Steinernes Meer, Hochkönig, Hagengebirge, Göllstock, Tennengebirge, Gosaukamm, Großvenedigergruppe Alpenhauptkamm, Glocknergruppe Alpenhauptkamm, Goldberggruppe Alpenhauptkamm, Ankogelgruppe, Muhr



Avalanche problems



Danger ratings

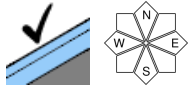
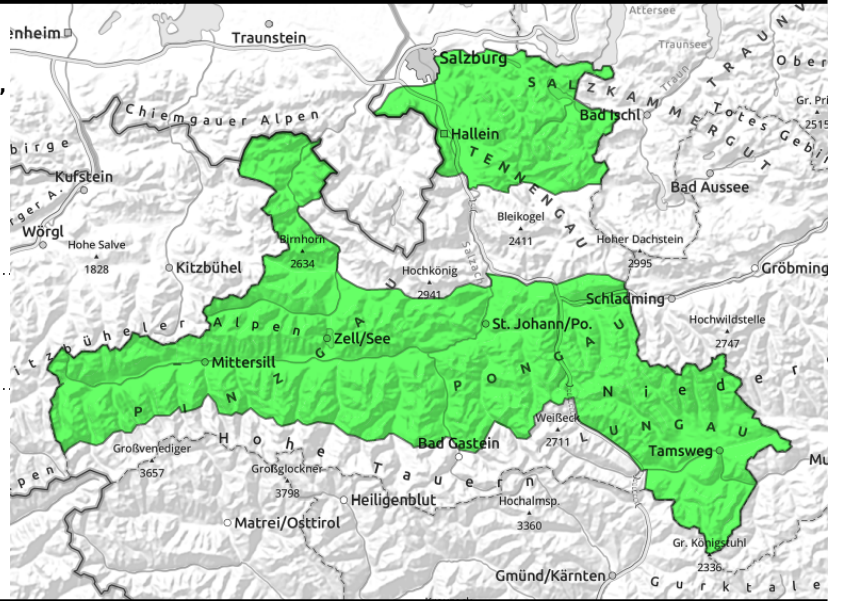


Expositions



15.01.2022

Chiemgauer Alpen, Heutal, Reiteralpe, Osterhorngruppe, Gamsfeldgruppe, Untersbergstock, Loferer und Leoganger Steinberge, Kitzbüheler Alpen, Glemmtal, Großvenedigergruppe Nord, Oberpinzgauer Grasberge, Glocknergruppe Nord, Dientner Grasberge, Goldberggruppe Nord, Pongauer Grasberge, Niedere Tauern Nord, Niedere Tauern Alpenhauptkamm, Niedere Tauern Süd, Nockberge



Favorable situation, hardly any danger zones

Avalanche danger is LOW. Hardly any danger zones. A small-to-medium slab could most likely trigger in extremely steep east-facing terrain (most recent drifts) or where the snow is shallow in high and high-alpine zones. (persistent weak layer). In extremely steep sunny and rocky terrain, small superficial avalanches can release - naturally or triggered by skiers. The danger of falling outweighs that of being buried in snow. Even the slightly blanketed rocks cause more trouble than avalanches at the moment.

Snowpack structure

The snowpack has settled well, the layers (also recent fresh snow and fresh drifts) have bonded well. A fracture in the uppermost melt-freeze or icy layers is possible in isolated cases (persistent weak layer). On shady slopes there is powder, on sunny slopes at low and intermediate altitudes there is melt-freeze. Some places have wind crusts, mostly breakable, fracture propagation possible only in isolated cases.

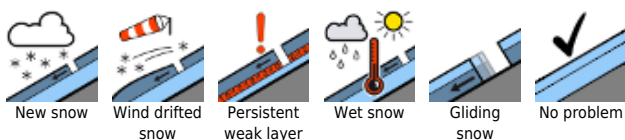
Weather

On Saturday, top visibility, lots of sunshine, no wind. Mild: at 2000 m +2 degrees.
 On Sunday, often sunny, a few cloudbanks will move through. In the afternoon, temperatures will start to drop, NW wind will arise.

Outlook

Hardly any change on Sunday.

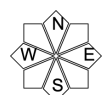
Avalanche problems



Danger ratings

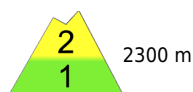


Expositions



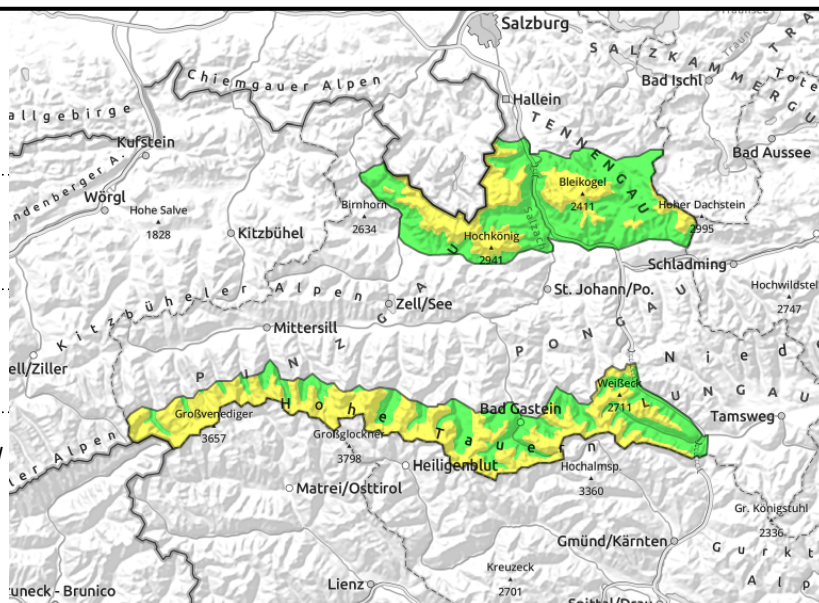
15.01.2022

Steinernes Meer, Hochkönig, Hagengebirge, Göllstock, Tennengebirge, Gosaukamm, Großvenedigergruppe Alpenhauptkamm, Glocknergruppe Alpenhauptkamm, Goldberggruppe Alpenhauptkamm, Ankogelgruppe, Muhr



thin, small snowdrift patches

north-facing slopes, where snow is shallow



Predominantly favourable situation

Avalanche danger above 2300 m is MODERATE, below that altitude danger is LOW. Hardly any danger zones. A small-to-medium slab could most likely trigger in extremely steep east-facing terrain (most recent drifts) or where the snow is shallow in high and high-alpine zones. (persistent weak layer). In extremely steep sunny and rocky terrain, small superficial avalanches can release - naturally or triggered by skiers. The danger of falling outweighs that of being buried in snow. Even the slightly blanketed rocks cause more trouble than avalanches at the moment.

Snowpack structure

The snowpack has settled well, the layers (also recent fresh snow and fresh drifts) have bonded well. A fracture in the uppermost melt-freeze or icy layers is possible in isolated cases (persistent weak layer). On shady slopes there is powder, on sunny slopes at low and intermediate altitudes there is melt-freeze. Some places have wind crusts, mostly breakable, fracture propagation possible only in isolated cases.

Weather

On Saturday, top visibility, lots of sunshine, no wind. Mild: at 2000 m +2 degrees.

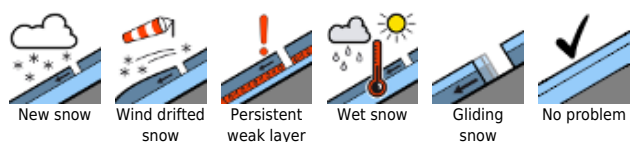
On Sunday, often sunny, a few cloudbanks will move through. In the afternoon, temperatures will start to drop, NW wind will arise.

Outlook

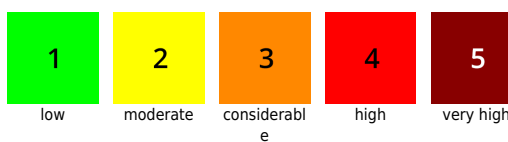
Hardly any change on Sunday.

Translated by Jeffrey McCabe, www.creativtrans.com

Avalanche problems



Danger ratings



Expositions

