

## Minor snowdrift problem, favorable widespread



Osterhorngruppe, Gamsfeldgruppe, Untersbergstock, Chiemgauer Alpen, Heutal, Reiteralpe, Kitzbüheler Alpen, Glemmtal, Oberpinzgauer Grasberge, Großvenedigergruppe Nord, Glocknergruppe Nord, Dientner Grasberge, Goldberggruppe Nord, Niedere Tauern Nord, Pongauer Grasberge, Niedere Tauern Alpenhauptkamm



2300 m

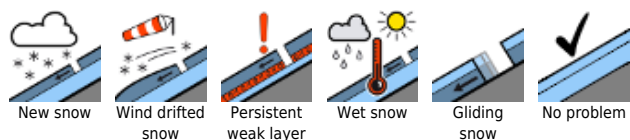
Steinernes Meer, Hochkönig, Hagengebirge, Göllstock, Tennengebirge, Gosaukamm, Großvenedigergruppe Alpenhauptkamm, Glocknergruppe Alpenhauptkamm, Goldberggruppe Alpenhauptkamm, Ankogelgruppe, Muhr, Loferer und Leoganger Steinberge



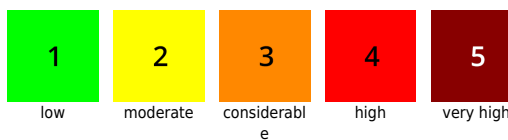
Niedere Tauern Süd, Nockberge



### Avalanche problems



### Danger ratings

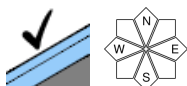
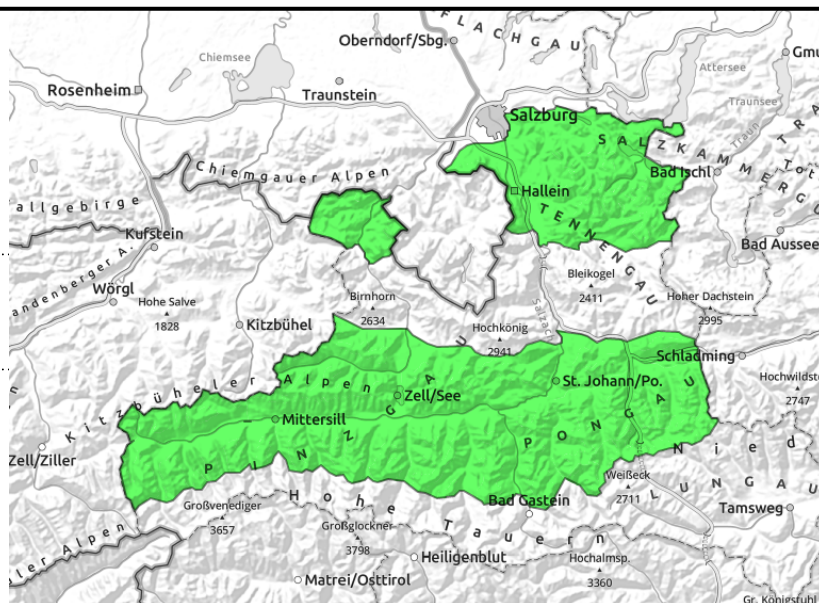


### Expositions



**14.01.2022**

Osterhorngruppe, Gamsfeldgruppe, Untersbergstock, Chiemgauer Alpen, Heutal, Reiteralpe, Kitzbüheler Alpen, Glemmtal, Oberpinzgauer Grasberge, Großvenedigergruppe Nord, Glocknergruppe Nord, Dientner Grasberge, Goldberggruppe Nord, Niedere Tauern Nord, Pongauer Grasberge, Niedere Tauern Alpenhauptkamm



**Favorable situation, hardly any danger zones**

Avalanche danger is LOW. Avalanche prone locations isolated, most likely in extremely steep N/E aspects where a small-to-medium slab can be triggered.

**Snowpack structure**

The snowpack has settled well, the layers (also recent fresh snow and fresh drifts) have bonded well. Powder snow (10-30 cm) often lies atop a melt-freeze crust, on sunny slopes the snow is already sticky

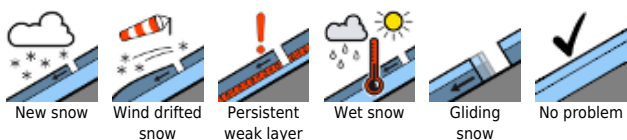
**Weather**

On Friday and Saturday, lots of sunshine, outstanding visibility, dry air. At 2000 m: +2 degrees. Little wind.

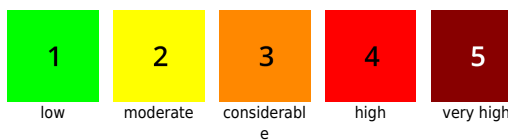
**Outlook**

No change.

**Avalanche problems**



**Danger ratings**

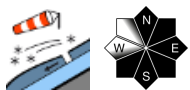


**Expositions**

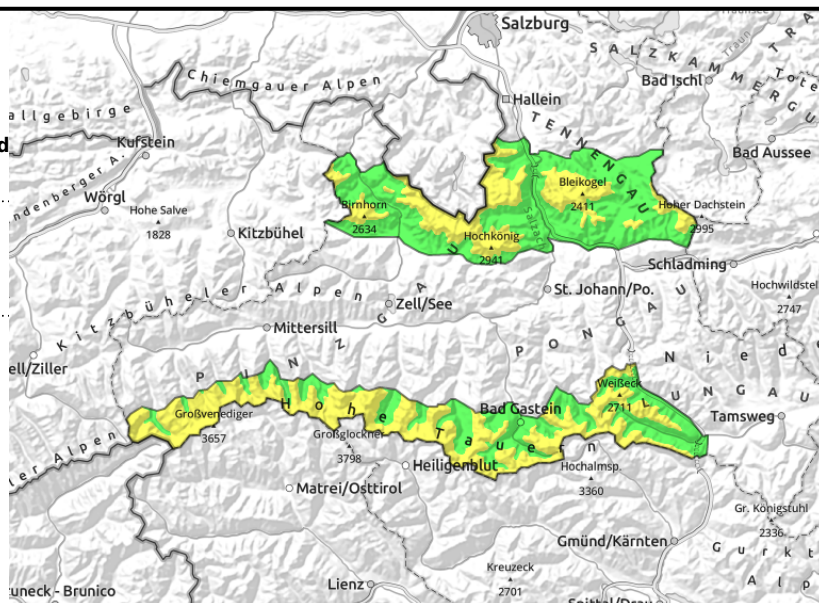


**14.01.2022**

Steinernes Meer, Hochkönig, Hagengebirge, Göllstock, Tennengebirge, Gosaukamm, Großvenedigergruppe Alpenhauptkamm, Glocknergruppe Alpenhauptkamm, Goldberggruppe Alpenhauptkamm, Ankogelgruppe, Muhr, Loferer und Leoganger Steinberge



thin, small snowdrift patches



### Moderate snowdrift problem

Avalanche danger above 2300 m is MODERATE, below that altitude danger is LOW. A small-to-medium slab avalanche can be triggered, especially near ridgelines, by large additional loading.. Most avalanche prone locations are located on N/E facing slopes, with ascending altitude also on south-facing slopes

### Snowpack structure

Atop a compact old snowpack which is topped by a melt-freeze crust or a rain crust there is powder and snowdrifts. In some places the snowdrifts are blanketed by fresher snow. Exposed terrain is windblown. Bonding amongst the individual layers is mostly good.

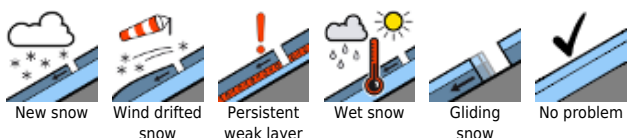
### Weather

On Friday lots of sunshine, outstanding visibility, dry air. Northerly winds at high altitudes will be irritating. At 2000 m: +2 degrees, at 3000 m: -2 degrees. Little wind.  
On Saturday sunny, outstanding visibility, little wind. At 2000 m: +2 degrees; at 3000 m: -2 degrees.

### Outlook

and Saturday,

#### Avalanche problems



#### Danger ratings

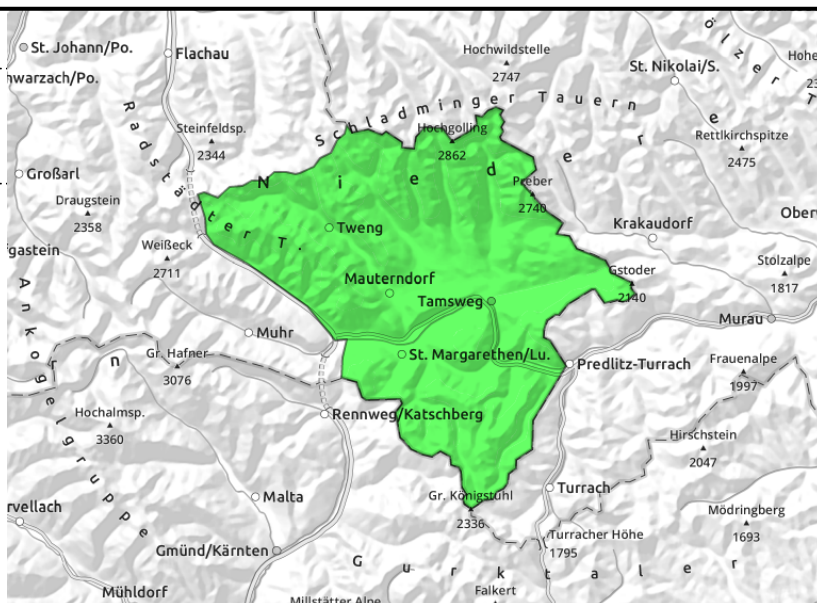
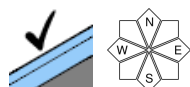


#### Expositions



**14.01.2022**

**Niedere Tauern Süd, Nockberge**



**Favorable situation, hardly any danger zones**

Avalanche danger above 2000 m is LOW. Avalanche prone locations are rare. Mostly likely on extremely steep E/S facing slopes or in wind-loaded steep gullies, a small-to-medium slab might be triggered.

**Snowpack structure**

The snowpack has settled well, and the layers (including the most recent fresh snow and drifts) have bonded well. Melt-freeze crusts dominate.

**Weather**

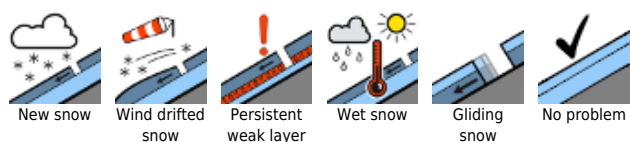
On Friday and Saturday, lots of sunshine, outstanding visibility, dry air. Northerly winds at high altitudes will be irritating. At 2000 m: +2 degrees. Little wind on Saturday

**Outlook**

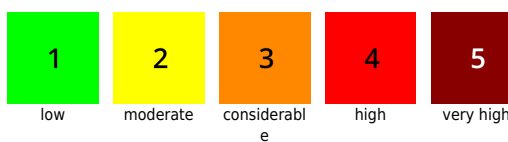
No change

Translated by Jeffrey McCabe, [www.creativtrans.com](http://www.creativtrans.com)

**Avalanche problems**



**Danger ratings**



**Expositions**

