

Minor snowdrift problem, favorable conditions widespread



Osterhorngruppe, Gamsfeldgruppe, Untersbergstock, Chiemgauer Alpen, Heutal, Reiteralpe, Kitzbüheler Alpen, Glemmtal, Oberpinzgauer Grasberge, Großvenedigergruppe Nord, Glocknergruppe Nord, Dientner Grasberge, Goldberggruppe Nord, Niedere Tauern Nord, Pongauer Grasberge, Nockberge

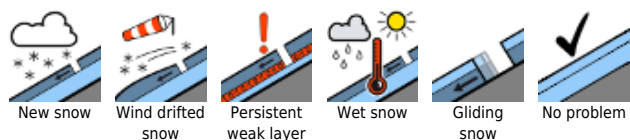


2300 m

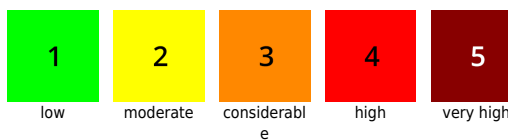
Loferer und Leoganger Steinberge, Steinernes Meer, Hochkönig, Hagengebirge, Göllstock, Tennengebirge, Gosaukamm, Großvenedigergruppe Alpenhauptkamm, Glocknergruppe Alpenhauptkamm, Goldberggruppe Alpenhauptkamm, Niedere Tauern Alpenhauptkamm, Ankogelgruppe, Muhr, Niedere Tauern Süd



Avalanche problems



Danger ratings

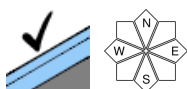
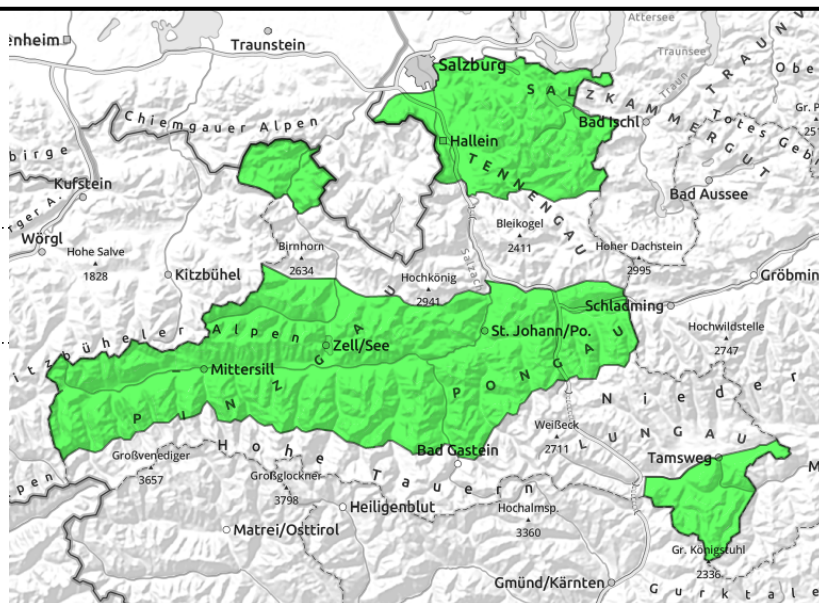


Expositions



13.01.2022

Osterhorngruppe, Gamsfeldgruppe, Untersbergstock, Chiemgauer Alpen, Heutal, Reiteralpe, Kitzbüheler Alpen, Glemmtal, Oberpinzgauer Grasberge, Großvenedigergruppe Nord, Glocknergruppe Nord, Dientner Grasberge, Goldberggruppe Nord, Niedere Tauern Nord, Pongauer Grasberge, Nockberge



Favorable situation, hardly any danger zones

Avalanche danger is LOW. Avalanche prone locations isolated, most likely in extremely steep N/E aspects

Snowpack structure

The snowpack has settled well, the layers (also recent fresh snow and fresh drifts) have bonded well.

Weather

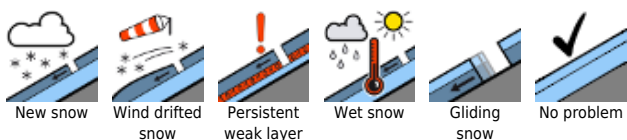
On Thursday, sunshine, outstanding visibility. Very dry air. At 2000 m: -2 degrees. Little wind.

On Friday, outstanding visibility, sunshine from early until late, little wind. At 2000 M. +2 degrees.

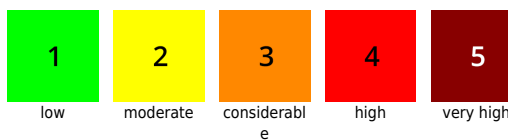
Outlook

No change

Avalanche problems



Danger ratings

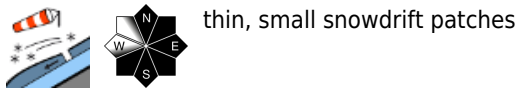
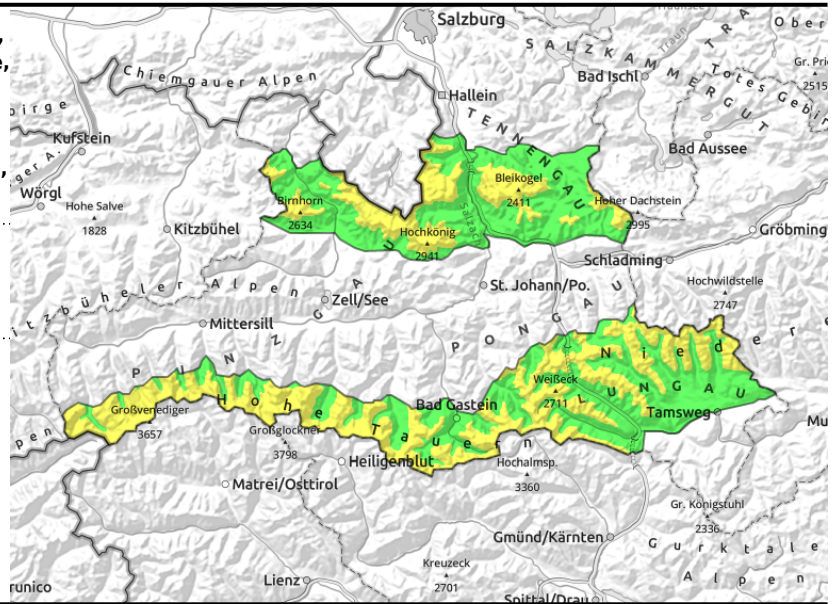


Expositions



13.01.2022

Loferer und Leoganger Steinberge, Steinernes Meer, Hochkönig, Hagengebirge, Göllstock, Tennengebirge, Gosaukamm, Großvenedigergruppe Alpenhauptkamm, Glocknergruppe Alpenhauptkamm, Goldberggruppe Alpenhauptkamm, Niedere Tauern Alpenhauptkamm, Ankogelgruppe, Muhr, Niedere Tauern Süd



Moderate snowdrift problem

Avalanche danger above 2300 m is MODERATE, below that altitude danger is LOW. A small-to-medium slab avalanche can be triggered, especially near ridgelines, by large additional loading.. Most avalanche prone locations are located on N/E facing slopes, with ascending altitude also on south-facing slopes

Snowpack structure

Atop a compact old snowpack which is topped by a melt-freeze crust or a rain crust there is powder and snowdrifts. In some places the snowdrifts are blanketed by fresher snow. Exposed terrain is windblown. Bonding amongst the individual layers is mostly good.

Weather

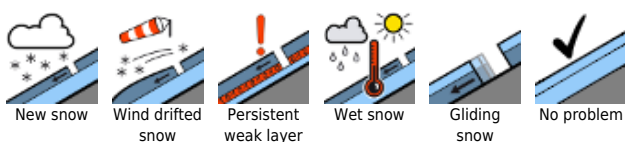
On Thursday, sunshine, outstanding visibility. Brisk northerly winds on the highest peaks and crests, elsewhere winds will be light. At 2000 m: -2 degrees, at 3000 m: -5 degrees. On Friday, outstanding visibility, sunshine from early until late. Very dry air. Somewhat milder.

Outlook

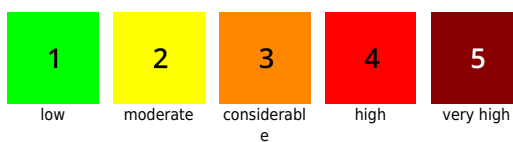
Slowly decreasing avalanche danger.

Translated by Jeffrey McCabe, www.creativtrans.com

Avalanche problems



Danger ratings



Expositions

