

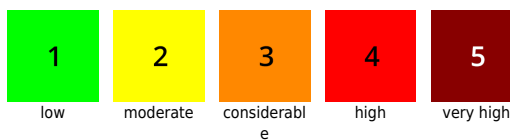
Moderate snowdrift problem

	Chiemgauer Alpen, Heutal, Reiteralpe, Untersbergstock, Osterhorngruppe, Gamsfeldgruppe		
	2000 m Loferer und Leoganger Steinberge, Steinernes Meer, Hochkönig, Hagengebirge, Göllstock, Tennengebirge, Gosaukamm, Pongauer Grasberge, Dientner Grasberge, Kitzbüheler Alpen, Glemmtal, Oberpinzgauer Grasberge, Großvenedigergruppe Nord, Glocknergruppe Nord, Goldberggruppe Nord, Niedere Tauern Nord		
	2000 m Großvenedigergruppe Alpenhauptkamm, Glocknergruppe Alpenhauptkamm, Goldberggruppe Alpenhauptkamm		
	forestline Niedere Tauern Alpenhauptkamm, Niedere Tauern Süd, Ankogelgruppe, Muhr, Nockberge		

Avalanche problems



Danger ratings

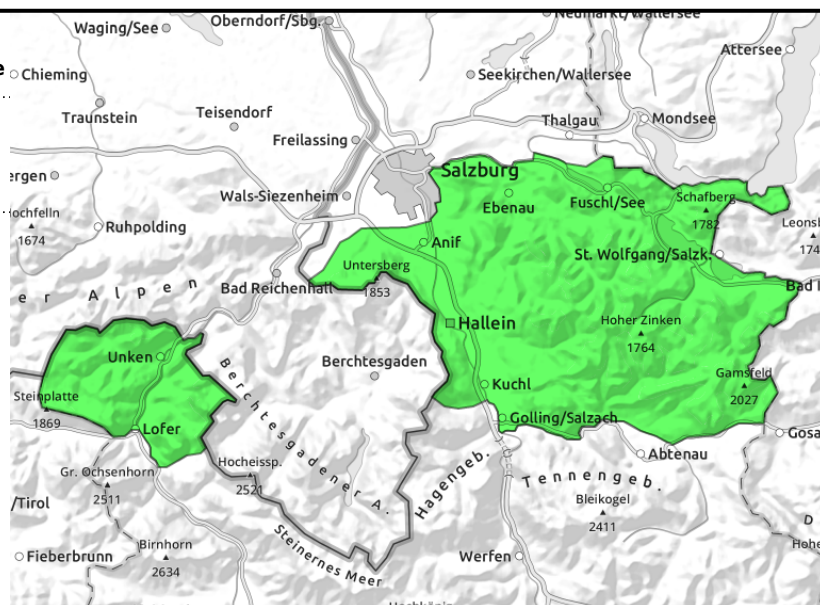
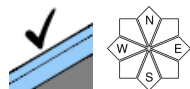


Expositions



12.01.2022

Chiemgauer Alpen, Heutal, Reiteralpe, Untersbergstock, Osterhorngruppe, Gamsfeldgruppe



Favorable situation, hardly any danger zones

Avalanche danger is LOW. Only few locations are prone to avalanches triggering, where a slab can be triggered, most likely in extremely steep N/E terrain.

Snowpack structure

On a thin compact old snowpack there is loose powder deposited.

Weather

On Wednesday, good visibility. Sunny in the morning, more clouds above summit altitudes in the afternoon. Little wind. At 1500 m: -3 degrees.

On Thursday, brilliant sunshine, little wind, milder. At 1500 m: +4 degrees

Outlook

Little change.

Avalanche problems



Danger ratings

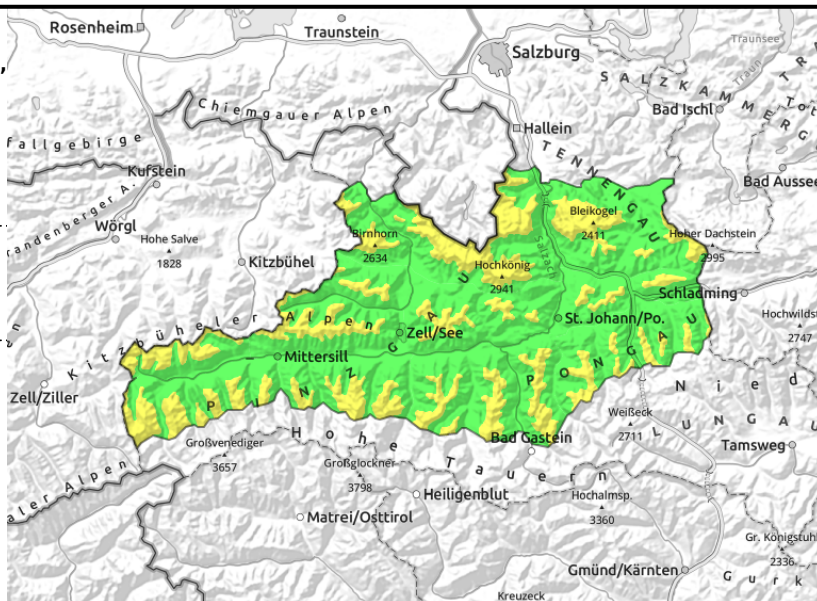
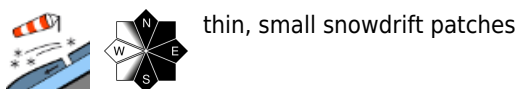


Expositions



12.01.2022

Loferer und Leoganger Steinberge, Steinernes Meer, Hochkönig, Hagengebirge, Göllstock, Tennengebirge, Gosaukamm, Pongauer Grasberge, Dientner Grasberge, Kitzbüheler Alpen, Glemmtal, Oberpinzgauer Grasberge, Großvenedigergruppe Nord, Glocknergruppe Nord, Goldberggruppe Nord, Niedere Tauern Nord



Small snowdrift accumulations

Avalanches above 2000 m is MODERATE, below that altitude danger is LOW. Snowdrifts, mostly near to ridgelines in N/E/S aspects can trigger a slab avalanche mostly by large additional loading. Snowdrifts are often blanketed with fresher snow.

Snowpack structure

Atop a compact old snowpack there is 10-40 cm of loose snow deposited. Older snowdrifts often prevail (from the weekend) which are sometimes blanketed over.

Weather

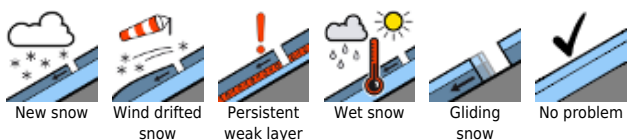
On Wednesday, good visibility. Sunny in the morning, more clouds above summit altitudes in the afternoon. Little wind. At 2000 m: -5 degrees.

On Thursday, brilliant sunshine, little wind, milder. At 2000 m: +2 degrees.

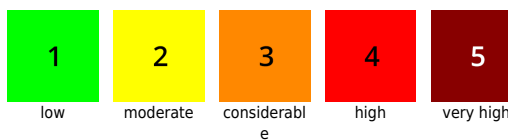
Outlook

Avalanche danger will recede.

Avalanche problems



Danger ratings



Expositions

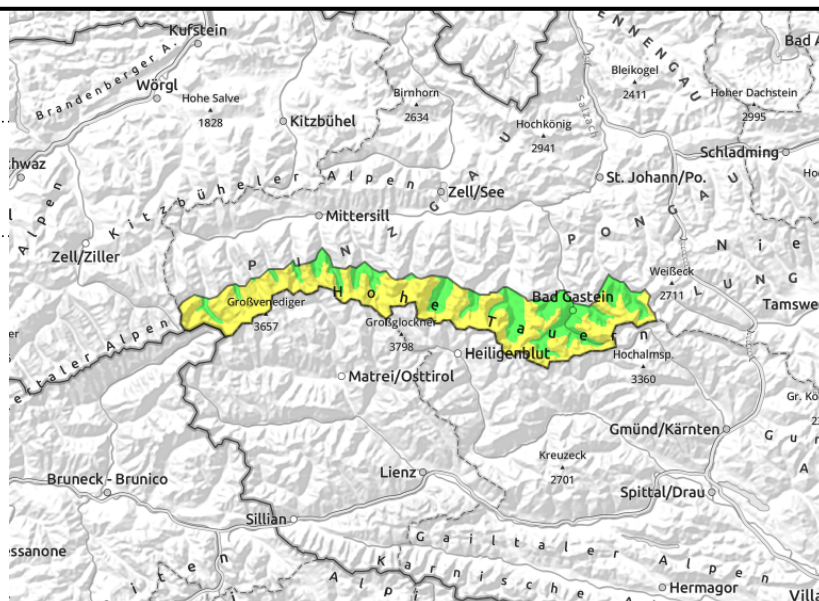


12.01.2022

**Großvenedigergruppe Alpenhauptkamm,
Glocknergruppe Alpenhauptkamm, Goldberggruppe
Alpenhauptkamm**



thin, small snowdrift accumulations



Small snowdrift masses

Avalanche danger above 2000 m is MODERATE, below that altitude danger is LOW. A small-to-medium slab can be triggered even by minimum additional loading, mostly near to ridgelines. Most avalanche prone locations are in N/E aspects, with ascending altitude also in southern aspects.

Snowpack structure

Atop a compact old snowpack there is 10-40 cm of loose snow deposited. Older snowdrifts often prevail (from the weekend) which are sometimes blanketed over. Bonding of most layers is good, but not always.

Weather

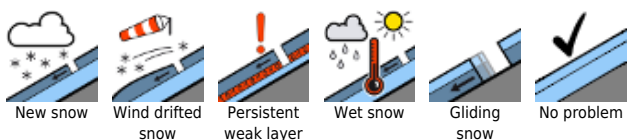
On Wednesday, good visibility. Sunny in the morning, more clouds above summit altitudes in the afternoon. Little wind. At 2000 m: -5 degrees.

On Thursday, brilliant sunshine, little wind, milder. At 2000 m: +2 degrees

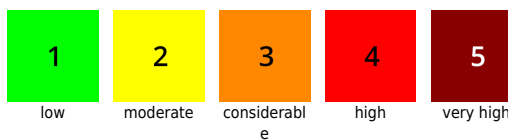
Outlook

Avalanche danger will recede.

Avalanche problems



Danger ratings

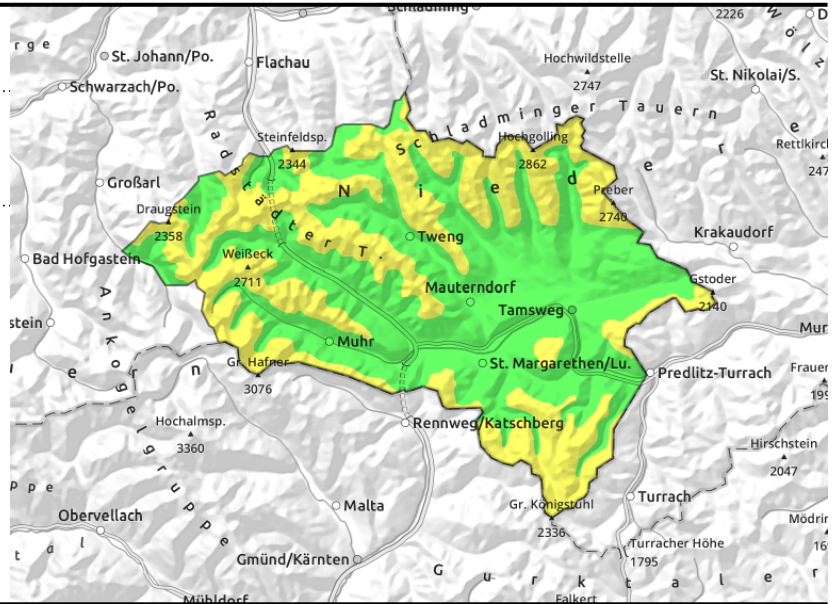


Expositions



12.01.2022

Niedere Tauern Alpenhauptkamm, Niedere Tauern Süd, Ankogelgruppe, Muhr, Nockberge



Above sparsely wooded forest zones, MODERATE snowdrift problem

Avalanche danger above 2000 m is MODERATE, below that altitude danger is LOW, near to and distant from ridgeline zones. A small-to-medium slab can be triggered even by large additional loading, mostly near to ridgelines. The snowdrift accumulations are frequently blanketed over.

Snowpack structure

Atop a compact old snowpack there is 10-40 cm of loose snow deposited. Older snowdrifts often prevail (from the weekend) which are sometimes blanketed over. Bonding of most layers is good.

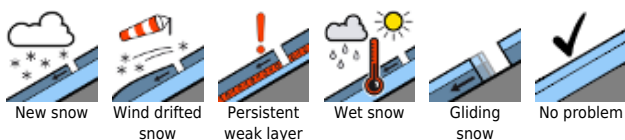
Weather

Sunny, good visibility, but brisk northerly winds. At 2000 m: -8 to -4 degrees.

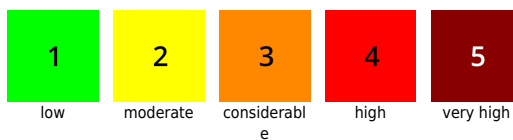
Outlook

Translated by Jeffrey McCabe, www.creativtrans.com

Avalanche problems



Danger ratings



Expositions

