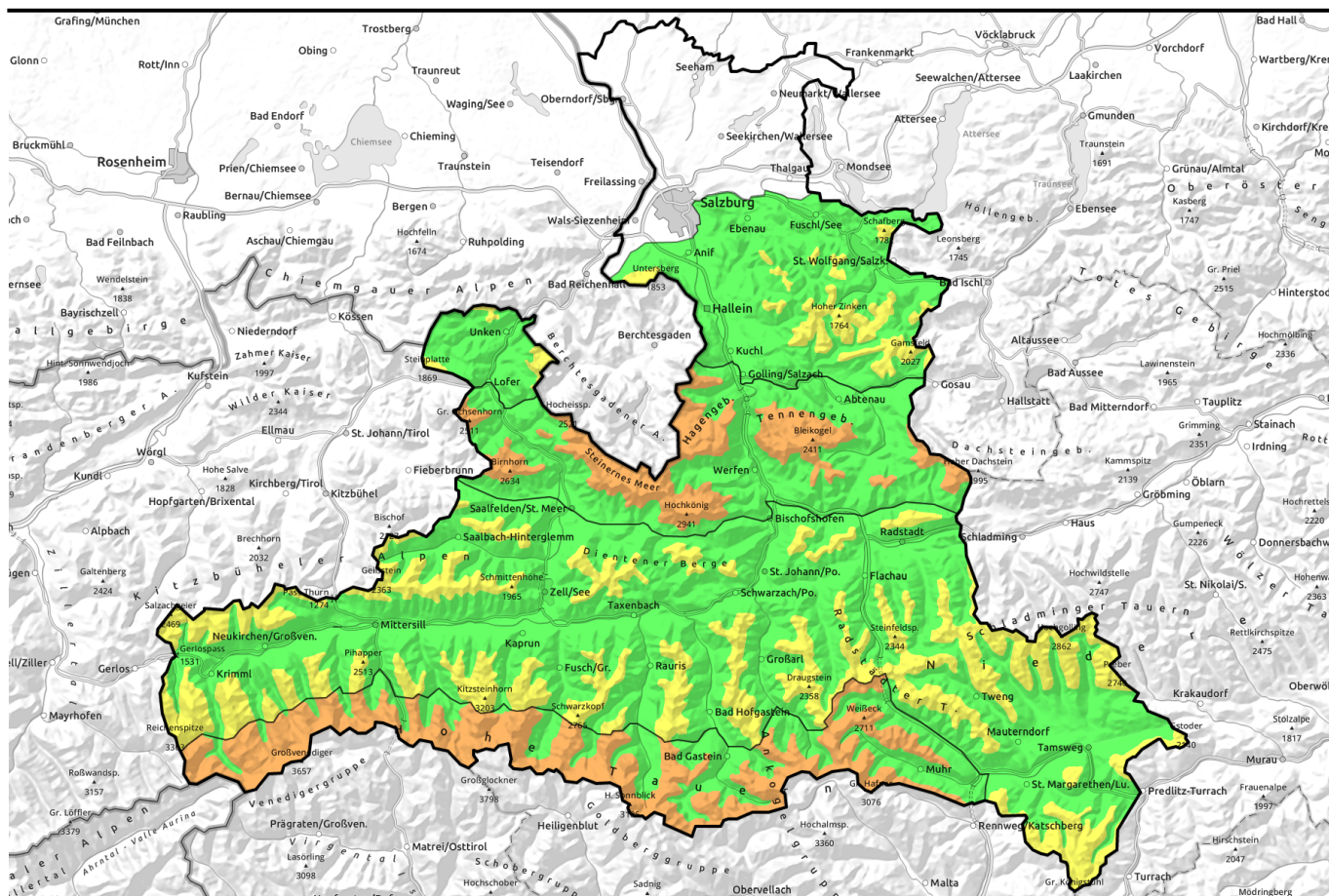


**09.01.2022**



## Snowdrift problem, particularly in Northern Alps, Tauern



Osterhorngruppe, Gamsfeldgruppe, Untersbergstock, Chiemgauer Alpen, Heutal, Reiteralpe, Kitzbüheler Alpen, Glemmtal, Dientner Grasberge, Pongauer Grasberge, Niedere Tauern Nord, Goldberggruppe Nord, Niedere Tauern Süd, Niedere Tauern Alpenhauptkamm, Nockberge, Glocknergruppe Nord, Oberpinzgauer Grasberge, Großvenedigergruppe Nord



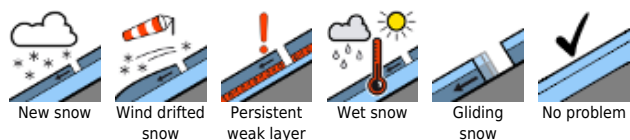
Loferer und Leoganger Steinberge, Steinernes Meer, Hochkönig, Hagengebirge, Göllstock, Tennengebirge, Gosaukamm



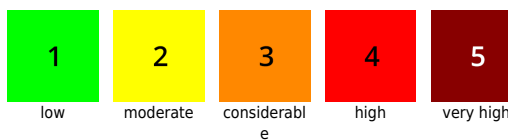
Großvenedigergruppe Alpenhauptkamm, Glocknergruppe Alpenhauptkamm, Goldberggruppe Alpenhauptkamm, Ankogelgruppe, Muhr



### Avalanche problems



### Danger ratings

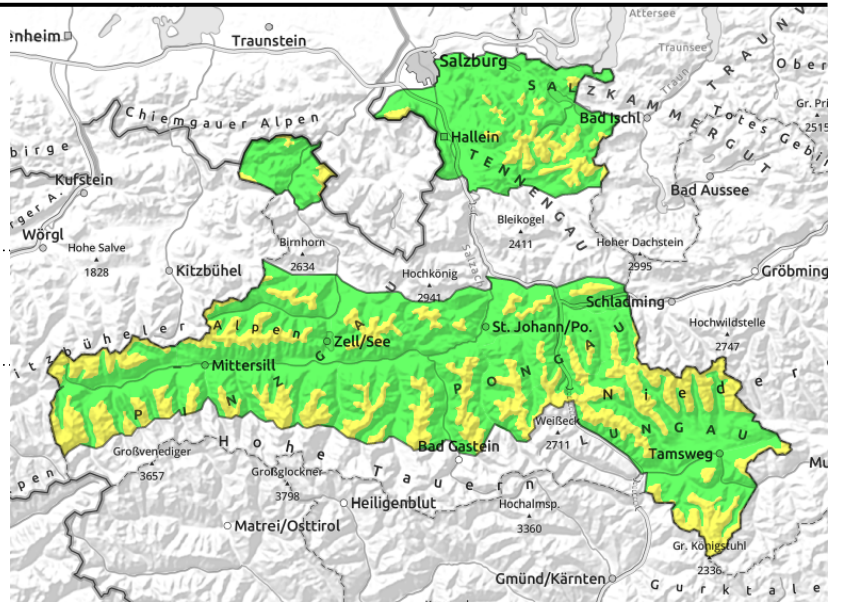
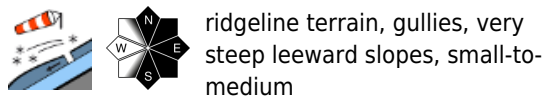


### Expositions



**09.01.2022**

**Osterhorngruppe, Gamsfeldgruppe, Untersbergstock, Chiemgauer Alpen, Heutal, Reiteralpe, Kitzbüheler Alpen, Glemmtal, Dientner Grasberge, Pongauer Grasberge, Niedere Tauern Nord, Goldberggruppe Nord, Niedere Tauern Süd, Niedere Tauern Alpenhauptkamm, Nockberge, Glocknergruppe Nord, Oberpinzgauer Grasberge, Großvenedigergruppe Nord**



**Caution: fresh snowdrift accumulations**

The snowdrift problem above the treeline is MODERATE, below that altitude it is LOW. Avalanche danger locations are from fresh snowdrifts and those of yesterday, in the regions above the timberline and increasingly on steep ridgeline slopes. Caution urged in gullies, steep bowls, steep slopes in N/E/S aspects. Avalanches can be triggered even by the weight of one sole person, then grow from small to medium size.

**Snowpack structure**

The W/NW winds will continue to generate snowdrift accumulations and deposit them in ridgeline terrain. They are not especially large or deep, but easily triggered atop the cold, loose powder snow. The older snow from this week has settled somewhat on sunny slopes. It lies deposited on an older, melt-freeze encrusted surface. The soft layer just below the crust (faceted crystals from December) is currently not relevant.

**Weather**

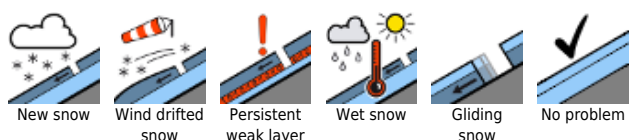
On **Sunday** the peaks will mostly be veiled in clouds, repeated bouts of snowfall are expected. During the daytime, 5-15 cm of fresh snow is anticipated expected, apart from the Nockberge. On Sunday, brisk NW winds in high altitudes. At 2000 m: -10 degrees; at 3000 m: -15 degrees.

On **Monday**, snowfall and clouds will reduce visibility heavily. Particularly between Loferer Steinberge and Gosaukamm, persistent snowfall is anticipated, about 15 cm of fresh snow is expected. On the Main Alpine Ridge and in the Lungau, strong-to-stormy northerly winds. Temperatures will not change.

**Outlook**

All in all, avalanche danger increasing slightly within the current danger levels. Main problem remains the fresh snowdrifts above the treeline.

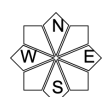
**Avalanche problems**



**Danger ratings**



**Expositions**

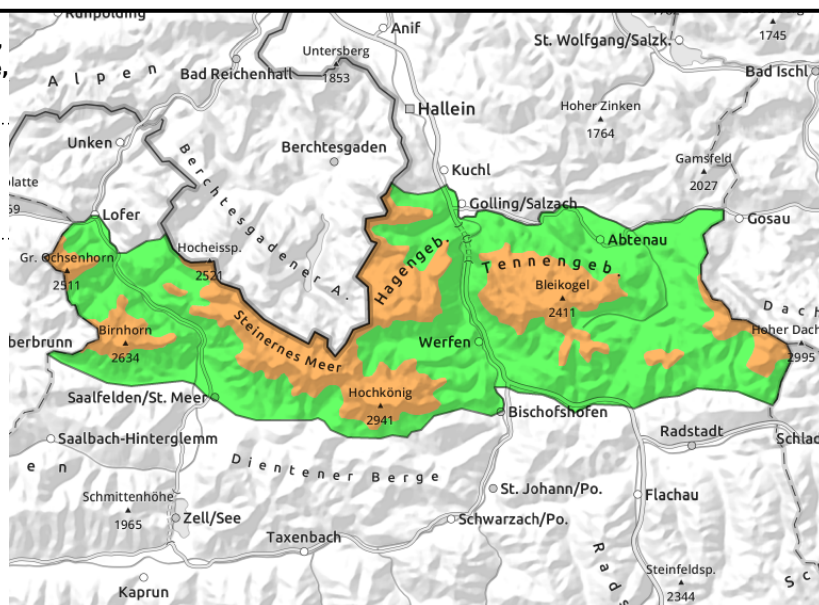


**09.01.2022**

**Loferer und Leoganger Steinberge, Steinernes Meer, Hochkönig, Hagengebirge, Göllstock, Tennengebirge, Gosaukamm**



above treeline, with ascending altitude more easily triggered snowdrift accumulations



**Fresh snowdrift accumulations are being generated.**

CONSIDERABLE snowdrift problem in the exposed zones above the timberline, and with ascending altitude

As westerly winds intensify, new and, in the wind-exposed zones, wide-ranging avalanche prone locations are being created. This applies to gullies, steep bowls and steep slopes in N/E/S aspects. Avalanches can be triggered even by the weight of one single skier, and grow to dangerously large size.

**Snowpack structure**

The W/NW winds will continue to generate snowdrift accumulations and deposit them in ridgeline terrain. They are not especially large or deep, but easily triggered atop the cold, loose powder snow. The older snow from this week has settled somewhat on sunny slopes. It lies deposited on an older, melt-freeze encrusted surface. The soft layer just below the crust (faceted crystals from December) is currently not relevant.

**Weather**

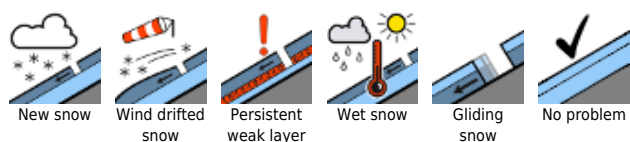
On **Sunday** the peaks will mostly be veiled in clouds, repeated bouts of snowfall are expected. During the daytime, 5-15 cm of fresh snow is anticipated expected, apart from the Nockberge. On Sunday, brisk NW winds in high altitudes. At 2000 m: -10 degrees; at 3000 m: -15 degrees.

On **Monday**, snowfall and clouds will reduce visibility heavily. Particularly between Loferer Steinberge and Gosaukamm, persistent snowfall is anticipated, about 15 cm of fresh snow is expected. On the Main Alpine Ridge and in the Lungau, strong-to-stormy northerly winds. Temperatures will not change.

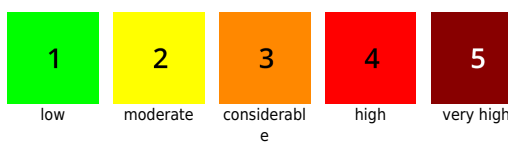
**Outlook**

All in all, avalanche danger increasing slightly within the current danger levels. Main problem remains the fresh snowdrifts above the treeline.

**Avalanche problems**



**Danger ratings**



**Expositions**

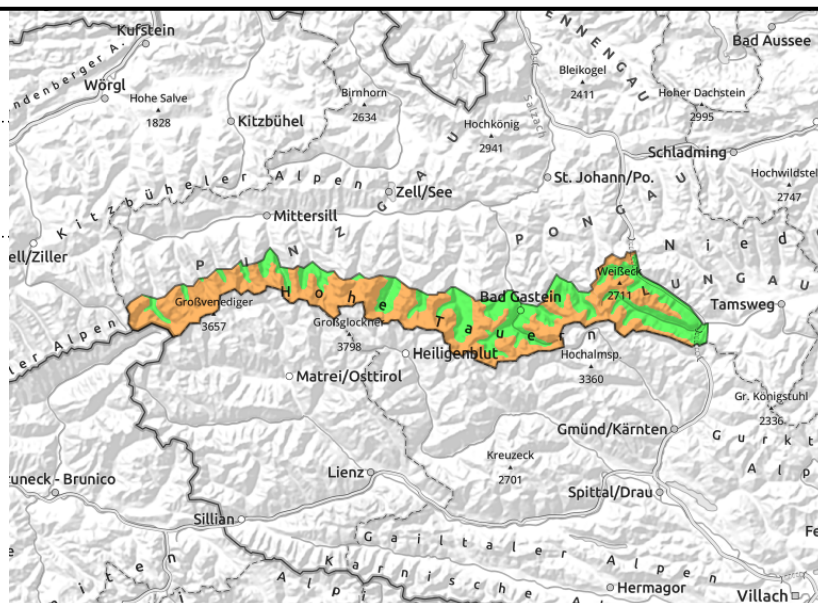


**09.01.2022**

**Großvenedigergruppe Alpenhauptkamm, Glocknergruppe Alpenhauptkamm, Goldberggruppe Alpenhauptkamm, Ankogelgruppe, Muhr**



Nighttime foehn wind. near to and distant from ridgelines, atop unfavorable base, often easily triggered, above 2000 m



## Fresh snowdrift masses from variable winds

Caution: the situation is different from the last few days!

CONSIDERABLE snowdrift problem in the exposed foehn lanes above the timberline, and with ascending altitude

As westerly winds intensify, new and, in the wind-exposed zones, wide-ranging avalanche prone locations are being created. This applies to gullies, steep bowls and steep slopes in N/E/S aspects. Avalanches can be triggered even by the weight of one single skier, and grow to dangerously large size.

### Snowpack structure

The foehn winds will continue to generate snowdrift accumulations and deposit them in ridgeline terrain. They are not especially large or deep, but easily triggered atop the cold, loose powder snow. The older snow from this week has settled somewhat on sunny slopes. It lies deposited on an older, melt-freeze encrusted surface. The soft layer just below the crust (faceted crystals from December) is currently not relevant.

### Weather

On **Sunday** the peaks will mostly be veiled in clouds, repeated bouts of snowfall are expected. On Saturday night, brisk to storm-strength foehn wind. During the daytime on Sunday, brisk NW winds in high altitudes. At 2000 m: -10 degrees; at 3000 m: -15 degrees.

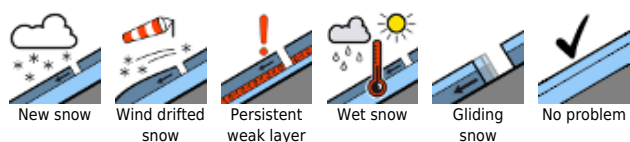
On **Monday**, snowfall and clouds will reduce visibility heavily. Particularly between Loferer Steinberge and Gosaukamm, persistent snowfall is anticipated, 5-15 cm of fresh snow is expected. Temperatures will not change.

### Outlook

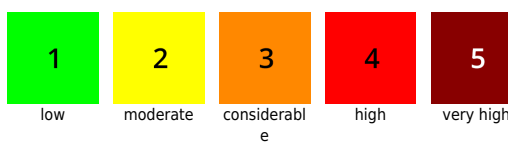
All in all, avalanche danger increasing slightly within the current danger levels. Main problem remains the fresh snowdrifts above the treeline.

Translated by Jeffrey McCabe, [www.creativtrans.com](http://www.creativtrans.com)

#### Avalanche problems



#### Danger ratings



#### Expositions

