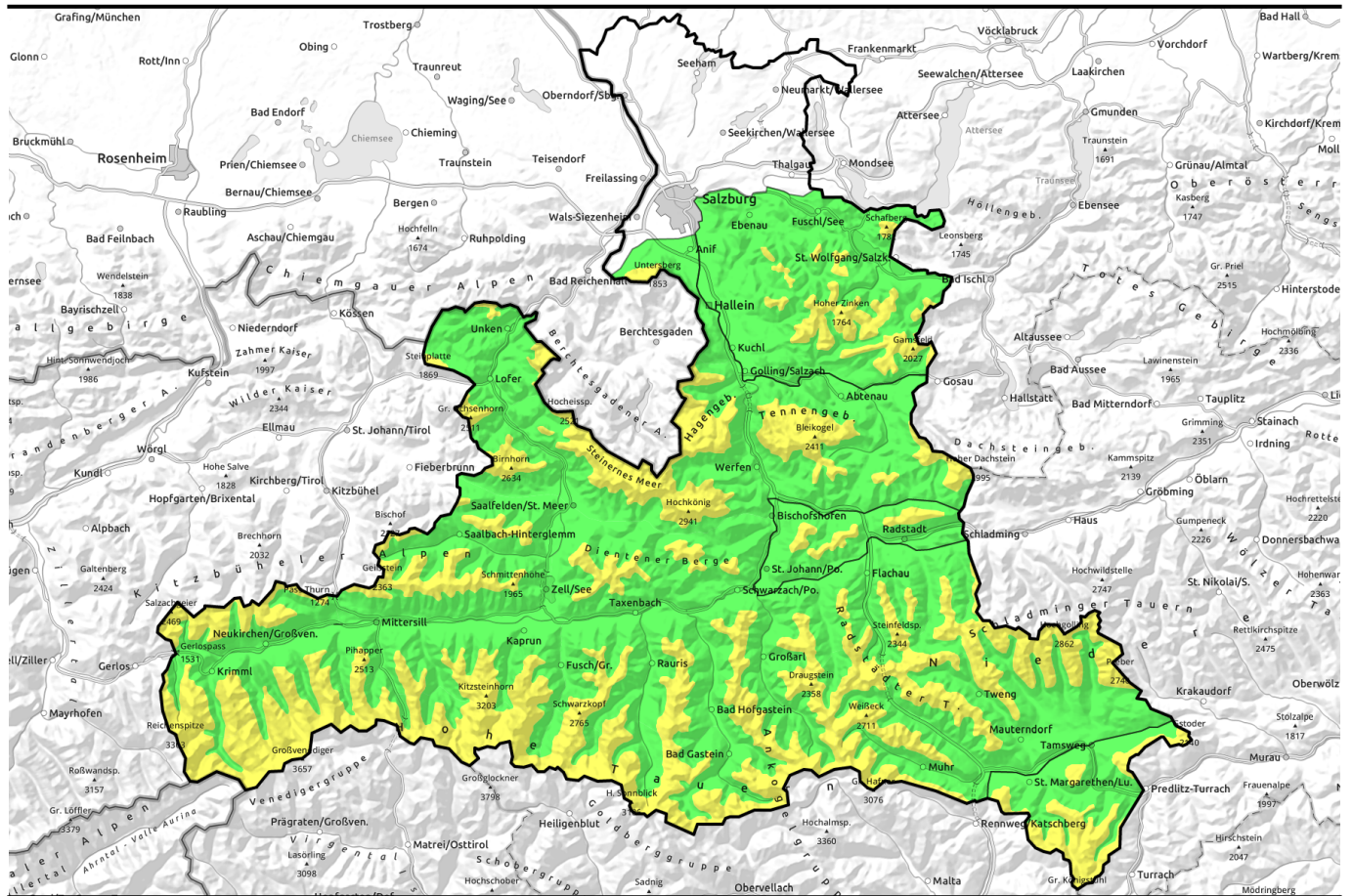


08.01.2022, morning



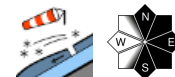
Daytime danger cycle! Strong winds, instable drifts over midday and in afternoon



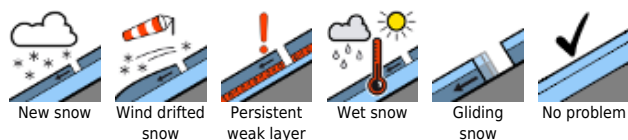
forestline Osterhorngruppe, Gamsfeldgruppe, Pongauer Grasberge, Nockberge



forestline Untersbergstock, Chiemgauer Alpen, Heutal, Reiteralpe, Loferer und Leoganger Steinberge, Steinernes Meer, Hochkönig, Hagengebirge, Göllstock, Tennengebirge, Gosaukamm, Kitzbüheler Alpen, Glemmtal, Oberpinzgauer Grasberge, Großvenedigergruppe Nord, Großvenedigergruppe Alpenhauptkamm, Glocknergruppe Nord, Goldberggruppe Nord, Niedere Tauern Nord, Niedere Tauern Alpenhauptkamm, Niedere Tauern Süd, Ankogelgruppe, Muhr, Goldberggruppe Alpenhauptkamm, Glocknergruppe Alpenhauptkamm, Dientner Grasberge



Avalanche problems



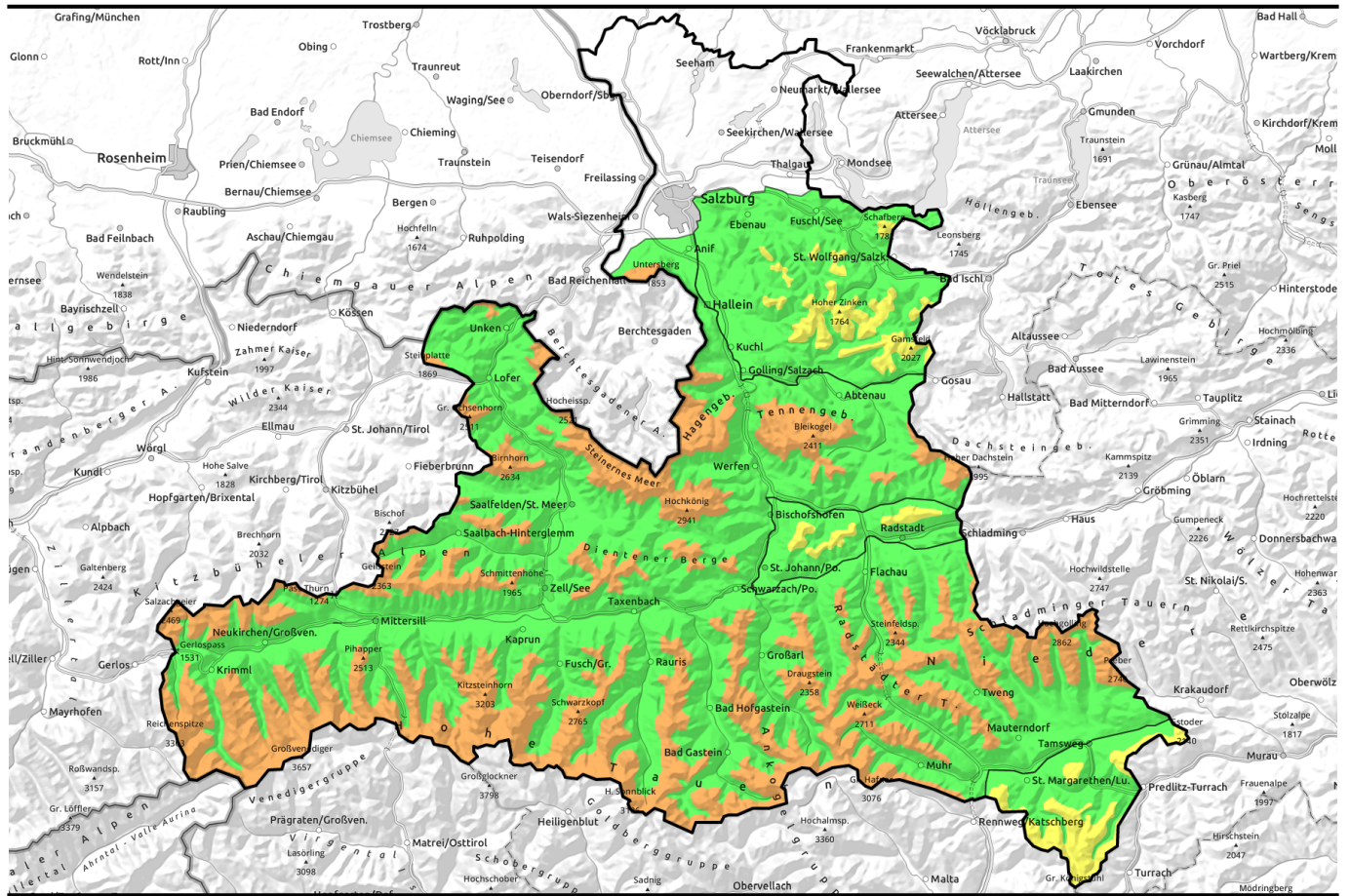
Danger ratings



Expositions



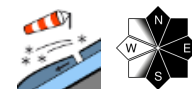
08.01.2022, afternoon



Tagesgang! Über Mittag und am Nachmittag starker Wind und labiler Triebschnee



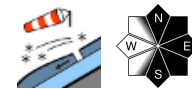
Osterhorngruppe, Gamsfeldgruppe, Pongauer Grasberge, Nockberge



forestline

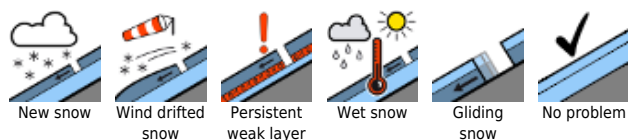


Untersbergstock, Chiemgauer Alpen, Heutal, Reitalpe, Loferer und Leoganger Steinberge, Steinernes Meer, Hochkönig, Hagengebirge, Göllstock, Tennengebirge, Gosaukamm, Kitzbüheler Alpen, Glemmtal, Oberpinzgauer Grasberge, Großvenedigergruppe Nord, Großvenedigergruppe Alpenhauptkamm, Glocknergruppe Nord, Goldberggruppe Nord, Niedere Tauern Nord, Niedere Tauern Alpenhauptkamm, Niedere Tauern Süd, Ankogelgruppe, Muhr, Goldberggruppe Alpenhauptkamm, Glocknergruppe Alpenhauptkamm, Dientner Grasberge

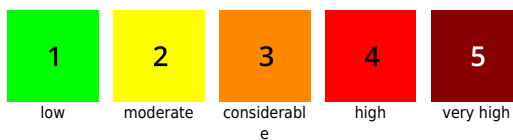


forestline

Avalanche problems



Danger ratings

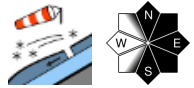


Expositions

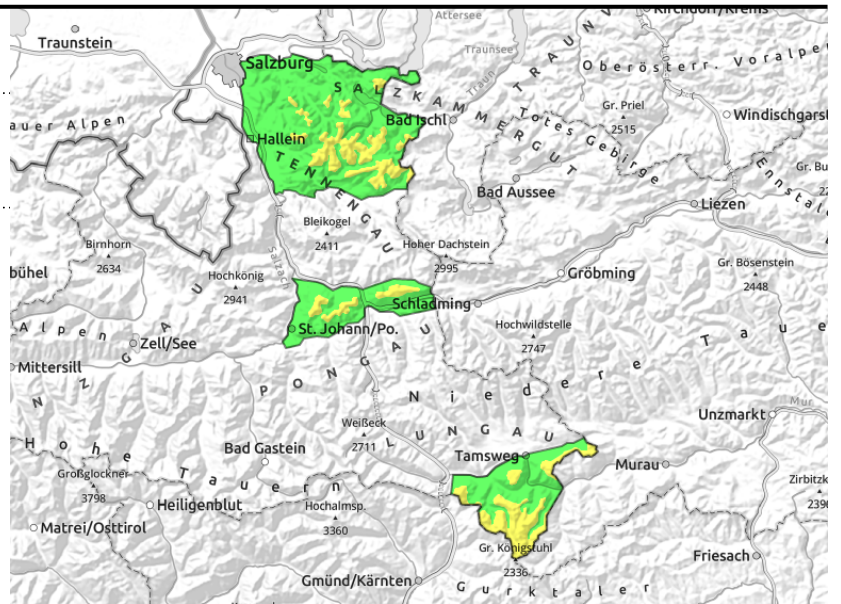


08.01.2022

**Osterhorngruppe, Gamsfeldgruppe, Pongauer
Grasberge, Nockberge**



avalanche prone locations increasing as of midday, above treeline, mostly small/medium drifted masses



Fresh snowdrift accumulations generated during daytime

The snowdrift problem above the timberline is predominantly MODERATE, below that altitude LOW. Danger zones will increase significantly during the afternoon.

As westerly winds intensify, new danger zones will be created, this applies to steep terrain above the treeline, namely, gullies, steep bowls and steep slopes in N/E/S aspects. Triggering an avalanche is possible even through the impulse of one single person, and avalanches can grow to max. medium size.

Also naturally triggered small slab avalanches and loose-snow avalanches can be triggered in extremely steep terrain by winds.

Snowpack structure

As winds arise, fresh snowdrift accumulations will be generated as of midday, which will be deposited atop a cold and loose powdery surface and be easily prone to triggering.

The amounts of fresh snow prior to wind impact will be 10-20 cm, deposited atop an old, melt-freeze encrusted surface. The soft layer directly beneath the rust (of faceted crystals from December) is not triggerable at the moment.

Weather

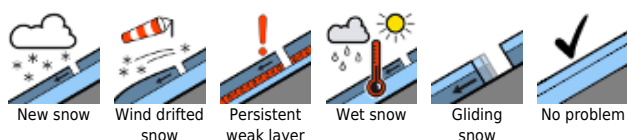
On **Saturday**, visibility often impaired by clouds and light snow showers (a few centimetres of fresh snow). In the afternoon, clouds will disperse, sunshine is anticipated. Caution: strong westerly winds will arise. For hours in the afternoon, strong-to-stormy winds (40-60 km/hr) will be blowing. Cold! At 2000 m: -10 degrees.

On **Sunday**, the peaks will mostly be shrouded in cloud, with repeated bouts of snowfall expected (5-10 cm). Winds will often be

Outlook

Little change is expected on Sunday. The main problem remains: fresh snowdrift masses above the treeline.

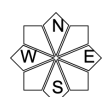
Avalanche problems



Danger ratings

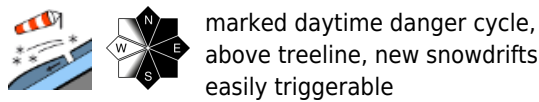
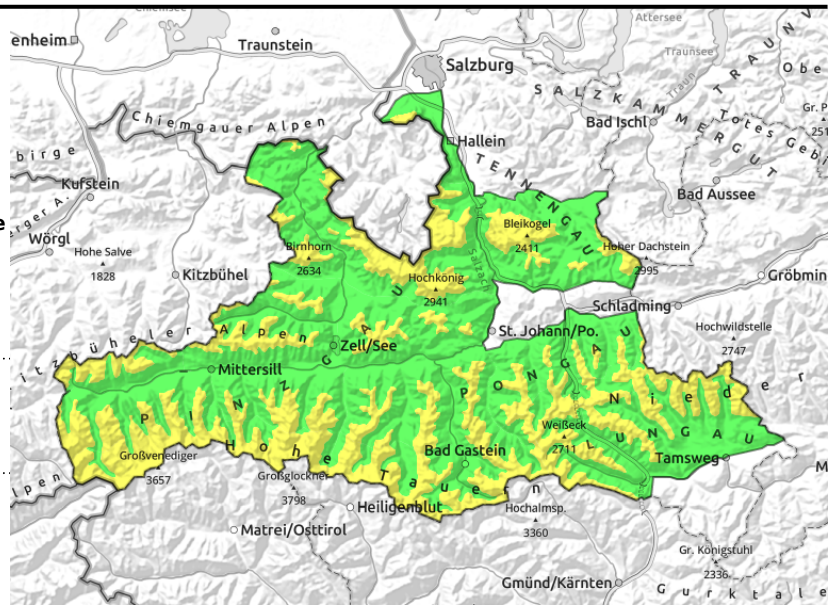


Expositions



08.01.2022, morning

Untersbergstock, Chiemgauer Alpen, Heutal, Reiteralpe, Loferer und Leoganger Steinberge, Steinernes Meer, Hochkönig, Hagengebirge, Göllstock, Tennengebirge, Gosaukamm, Kitzbüheler Alpen, Glemmtal, Oberpinzgauer Grasberge, Großvenedigergruppe Nord, Großvenedigergruppe Alpenhauptkamm, Glocknergruppe Nord, Goldberggruppe Nord, Niedere Tauern Nord, Niedere Tauern Alpenhauptkamm, Niedere Tauern Süd, Ankogelgruppe, Muhr, Goldberggruppe Alpenhauptkamm, Glocknergruppe Alpenhauptkamm, Dientner Grasberge



Instable snowdrift accumulations will quickly generate due to strong winds

Caution: the situation is swiftly changing during the daytime

Increasing snowdrift problem above the timberline. To start with, MODERATE avalanche danger, **as of midday generally CONSIDERABLE.**

With the arising westerly winds, wide-ranging danger zones will be generated. This applies to steep terrain above the treeline, in gullies, steep bowls and steep N/E/SW facing slopes. Triggering an avalanche is possible even through the impulse of one single person. Avalanches can grow to dangerously large size.

Also naturally triggered slab avalanches and loose-snow avalanches can be triggered in extremely steep terrain by winds.

Snowpack structure

As winds arise, the cards are being reshuffled. As of midday, fresh snowdrift accumulations are being generated which will be deposited on the cold, loose powder and be easily triggered. In wind-impacted zones the snow transport will be far reaching in the afternoon.

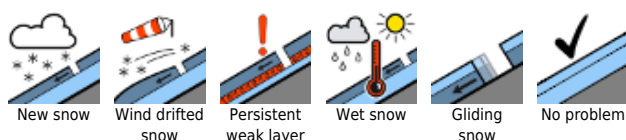
Prior to the wind impact there was 20-40 cm of snowfall, as much as 50 cm on the Main Tauern Ridge of cold and loosely packed powder deposited on an old, melt-freeze encrusted snowpack surface. The soft layer just beneath the crust (faceted crystals from December) is not easily triggered.

Weather

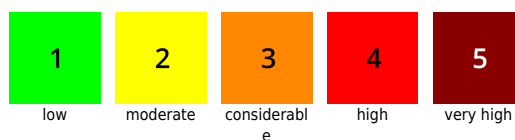
On **Saturday**, visibility often impaired by clouds and light snow showers (a few centimetres of fresh snow). In the afternoon, clouds will disperse, sunshine is anticipated. Caution: strong westerly winds will arise. For hours in the afternoon, strong-to-stormy winds (40-60 km/hr) will be blowing. Cold! At 2000 m: -10 degrees, at 3000 m -16 degrees.

On **Sunday**, the peaks will mostly be shrouded in cloud, with repeated bouts of snowfall expected (5-10 cm). Winds will often be brisk, south of the Tauern blowing at storm strength, from the northwest. At 2000 m: -10, at 3000 m -14 degrees.

Avalanche problems



Danger ratings



Expositions

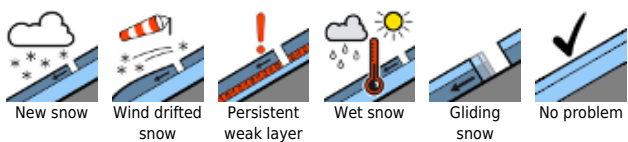


08.01.2022, morning

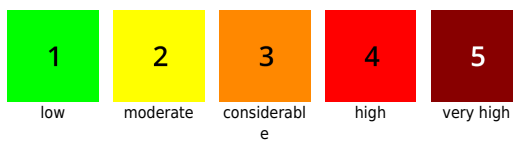
Outlook

The main problem remains: fresh snowdrift masses above the treeline.

Avalanche problems



Danger ratings

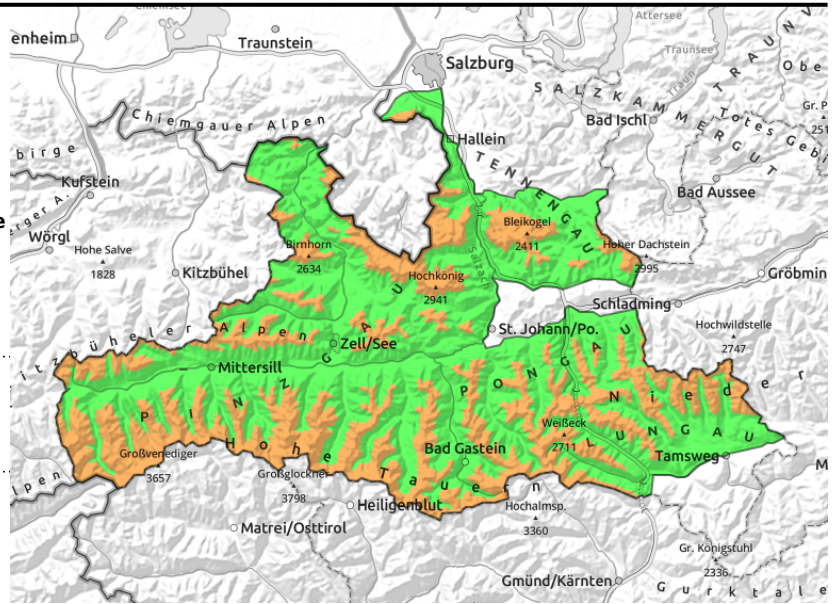


Expositions



08.01.2022, afternoon

Untersbergstock, Chiemgauer Alpen, Heutal, Reiteralpe, Loferer und Leoganger Steinberge, Steinernes Meer, Hochkönig, Hagengebirge, Göllstock, Tennengebirge, Gosaukamm, Kitzbüheler Alpen, Glemmtal, Oberpinzgauer Grasberge, Großvenedigergruppe Nord, Großvenedigergruppe Alpenhauptkamm, Glocknergruppe Nord, Goldberggruppe Nord, Niedere Tauern Nord, Niedere Tauern Alpenhauptkamm, Niedere Tauern Süd, Ankogelgruppe, Muhr, Goldberggruppe Alpenhauptkamm, Glocknergruppe Alpenhauptkamm, Dientner Grasberge



forestline



marked daytime danger cycle, above treeline, new snowdrifts easily triggerable

Instable snowdrift accumulations will quickly generate due to strong winds

Caution: the situation is swiftly changing during the daytime

Increasing snowdrift problem above the timberline. To start with, MODERATE avalanche danger, **as of midday generally CONSIDERABLE.**

With the arising westerly winds, wide-ranging danger zones will be generated. This applies to steep terrain above the treeline, in gullies, steep bowls and steep N/E/SW facing slopes. Triggering an avalanche is possible even through the impulse of one single person. Avalanches can grow to dangerously large size.

Also naturally triggered slab avalanches and loose-snow avalanches can be triggered in extremely steep terrain by winds.

Snowpack structure

As winds arise, the cards are being reshuffled. As of midday, fresh snowdrift accumulations are being generated which will be deposited on the cold, loose powder and be easily triggered. In wind-impacted zones the snow transport will be far reaching in the afternoon.

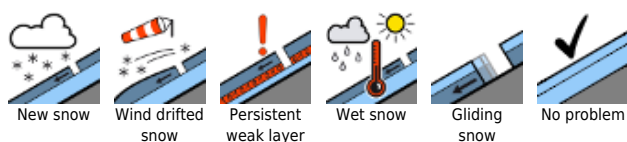
Prior to the wind impact there was 20-40 cm of snowfall, as much as 50 cm on the Main Tauern Ridge of cold and loosely packed powder deposited on an old, melt-freeze encrusted snowpack surface. The soft layer just beneath the crust (faceted crystals from December) is not easily triggered.

Weather

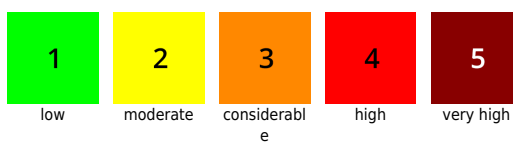
On **Saturday**, visibility often impaired by clouds and light snow showers (a few centimetres of fresh snow). In the afternoon, clouds will disperse, sunshine is anticipated. Caution: strong westerly winds will arise. For hours in the afternoon, strong-to-stormy winds (40-60 km/hr) will be blowing. Cold! At 2000 m: -10 degrees, at 3000 m -16 degrees.

On **Sunday**, the peaks will mostly be shrouded in cloud, with repeated bouts of snowfall expected (5-10 cm). Winds will often be brisk, south of the Tauern blowing at storm strength, from the northwest. At 2000 m: -10, at 3000 m -14 degrees.

Avalanche problems



Danger ratings



Expositions



08.01.2022, afternoon

Outlook

The main problem remains: fresh snowdrift masses above the treeline.

Translated by Jeffrey McCabe, www.creativtrans.com

Avalanche problems



New snow



Wind drifted
snow



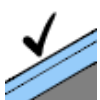
Persistent
weak layer



Wet snow



Gliding
snow



No problem

Danger ratings



1

low



2

moderate



3

considerabl
e



4

high



5

very high

Expositions

