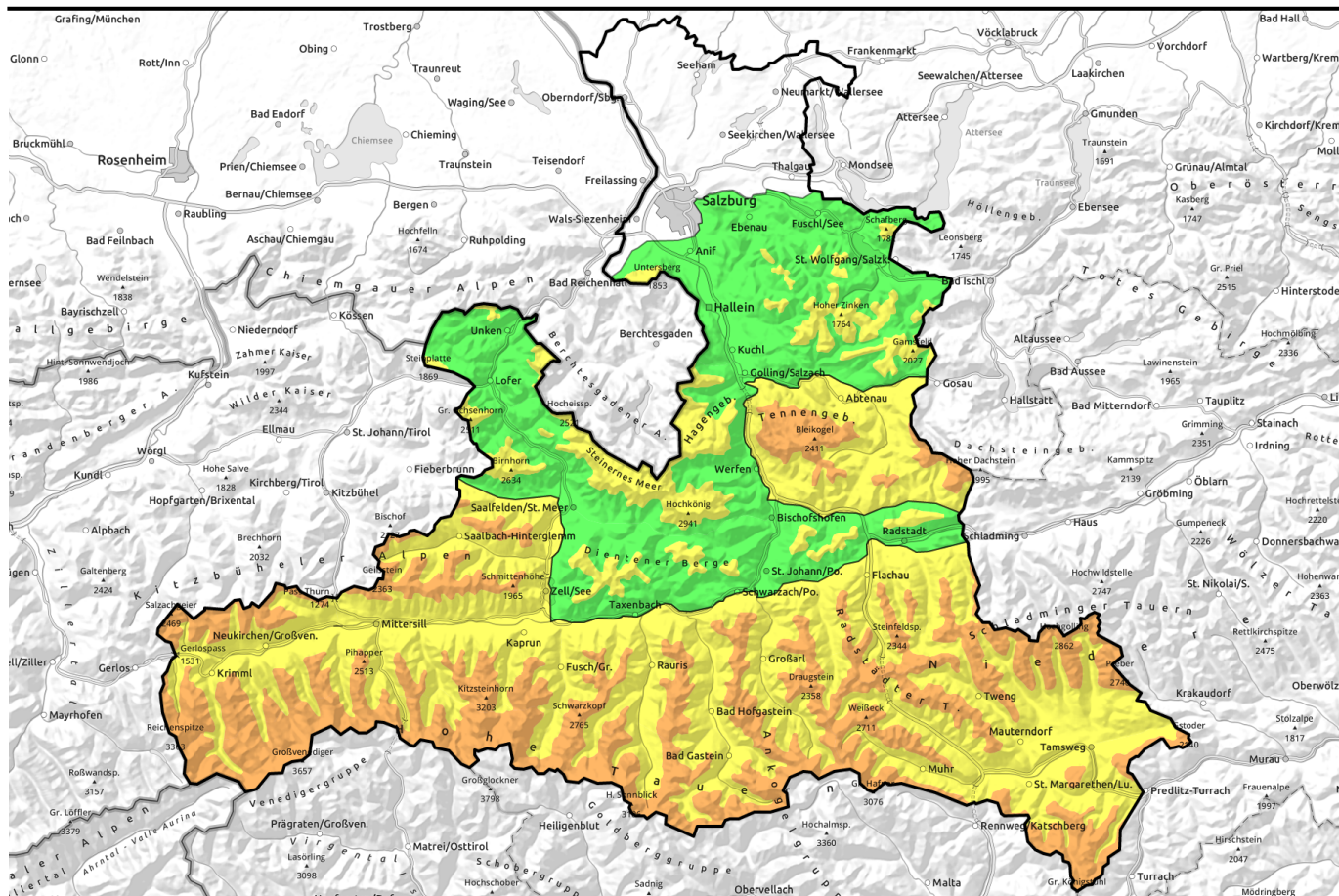


06.01.2022

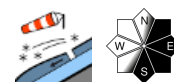


Heavy snow in southern regions in particular - snowdrift problem



forestline

Osterhorngruppe, Gamsfeldgruppe, Pongauer Grasberge, Untersbergstock, Steinernes Meer, Hochkönig, Hagengebirge, Göllstock, Loferer und Leoganger Steinberge, Chiemgauer Alpen, Heutal, Reiteralpe, Dientner Grasberge

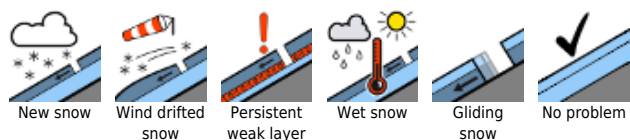


2000 m

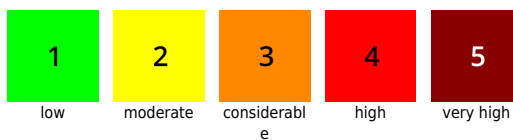
Oberpinzgauer Grasberge, Kitzbüheler Alpen, Glemmtal, Glocknergruppe Nord, Goldberggruppe Alpenhauptkamm, Großvenedigergruppe Alpenhauptkamm, Großvenedigergruppe Nord, Glocknergruppe Alpenhauptkamm, Goldberggruppe Nord, Niedere Tauern Nord, Niedere Tauern Alpenhauptkamm, Niedere Tauern Süd, Ankogelgruppe, Muhr, Nockberge, Tennengebirge, Gosaukamm



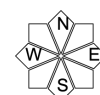
Avalanche problems



Danger ratings

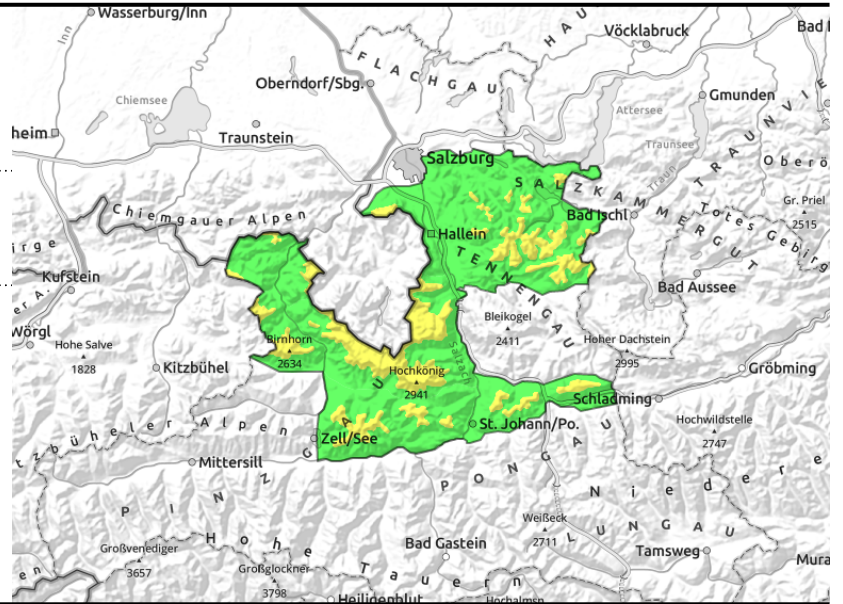
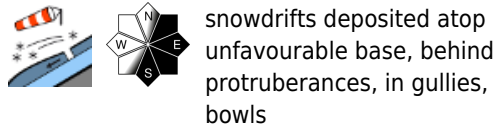


Expositions



06.01.2022

Osterhorngruppe, Gamsfeldgruppe, Pongauer Grasberge, Untersbergstock, Steinernes Meer, Hochkönig, Hagengebirge, Göllstock, Loferer und Leoganger Steinberge, Chiemgauer Alpen, Heutal, Reiteralpe, Dientner Grasberge



Avoid wind-loaded zones in E/S aspects

Danger of avalanches is **MODERATE** above the timberline, **LOW** below that altitude. Avalanche prone locations (due to snowdrifts) are found in gullies and steep bowls and on steep ridgeline slopes in NE/E/S aspects. An avalanche can be triggered even by minimum additional loading and grow to medium size.

Snowpack structure

There has been 10-25 cm of fresh snow registered on top of a frequently melt-freeze encrusted, sometimes iced-over snowpack surface. Bonding is largely favorable due to mild temperatures, but W/N winds have deposited cold, bonded snow on top of it, often interspersed with graupel. In this loose layer fractures could propagate in the snowdrifts. Beneath the melt-freeze crusts (now covered) there is soft, faceted snow which can also serve as a fracture point.

Weather

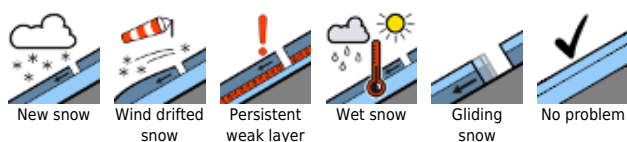
On **Thursday**, light snowfall (strong in some places, max. 15 cm). Visibility initially impaired. The W/NW winds blowing at 30-40 km/hr. Wintery cold temperatures. At 2000 m: -11 degrees; at 3000 m: -18 degrees.

On **Friday**, sunny from the start, flawless visibility. Winds no longer disturbing. Cold, at 2000 m: -8 degrees; at 3000 m: -12 degrees.

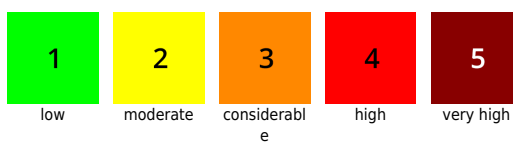
Outlook

Wind-loaded zones need to be evaluated critically. Sunny weather on Friday should not deceive: dangers lurk!

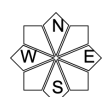
Avalanche problems



Danger ratings

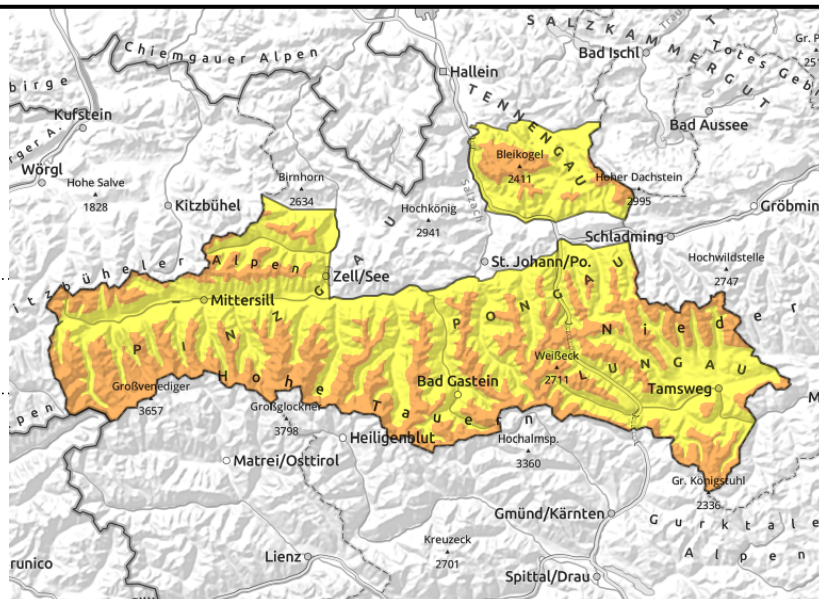


Expositions



06.01.2022

Oberpinzgauer Grasberge, Kitzbüheler Alpen, Glemmtal, Glocknergruppe Nord, Goldberggruppe Alpenhauptkamm, Großvenedigergruppe Alpenhauptkamm, Großvenedigergruppe Nord, Glocknergruppe Alpenhauptkamm, Goldberggruppe Nord, Niedere Tauern Nord, Niedere Tauern Alpenhauptkamm, Niedere Tauern Süd, Ankogelgruppe, Muhr, Nockberge, Tennengebirge, Gosaukamm



snowdrifts near to and distant from ridgelines, atop unfavorable base, easily triggered, danger zones increase with ascending altitude



much fresh snow fell amid dropping temperatures and intensifying winds

Blanketed loose snow is potential fracture point for slab avalanches

Danger of avalanches is a function of the amounts of fresh snow and wind impact. Above 2000 m: CONSIDERABLE, below that altitude down to the treeline MODERATE. The frequency of danger zones increases with ascending altitude. Avalanche prone locations (due to snowdrifts) are found in gullies and steep bowls and on steep ridgeline slopes in NE/E/S aspects. An avalanche can be triggered even by minimum additional loading and grow to medium size or larger. In the regions of the Main Tauern Ridge where snowfall has been heaviest, naturally triggered Size-3 avalanches can trigger naturally at high altitudes.

Snowpack structure

There has been 20-40 cm of fresh snow registered on top of a frequently melt-freeze encrusted, sometimes iced-over snowpack surface, in the Main Tauern Ridge zones up to 50 cm. Bonding is largely favorable due to mild temperatures, but W/N winds have deposited cold, bonded snow on top of it, often interspersed with graupel. In this loose layer fractures could propagate in the snowdrifts. Beneath the melt-freeze crusts (now covered) there is soft, faceted snow which can also serve as a fracture point.

Weather

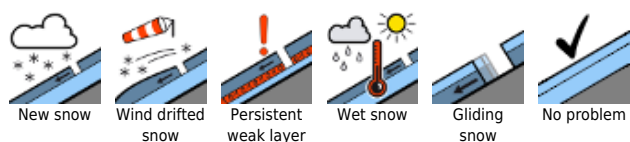
On **Thursday**, light snowfall (strong in some places, max. 15 cm). Visibility initially impaired. The W/NW winds blowing at 30-40 km/hr. Wintery cold temperatures. At 2000 m: -11 degrees; at 3000 m: -18 degrees.

On **Friday**, sunny from the start, flawless visibility. Winds no longer disturbing. Cold! At 2000 m: -8 degrees; at 3000 m: -12 degrees.

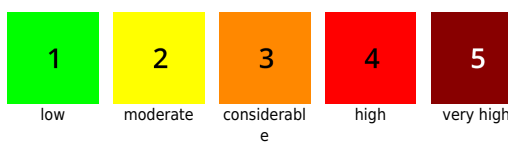
Outlook

The snowdrift problem remains upright at high altitudes, due to the persistently low temperatures.

Avalanche problems



Danger ratings



Expositions



06.01.2022

Sunny weather on Friday should not deceive: dangers lurk!

Translated by Jeffrey McCabe, www.creativtrans.com

Avalanche problems



New snow



Wind drifted
snow



Persistent
weak layer



Wet snow



Gliding
snow



No problem

Danger ratings



1

low



2

moderate



3

considerabl
e



4

high



5

very high

Expositions

